



**AGT**  
INDUSTRIAL

AGT Industrial

# Product manuals

Skid Steer Rock Picker Bucket

Model:AGT-SSRPB80

Ver.1.1.4

# Directory

Product introduction

1/14

Operator

2/14

Safety precautions

3/14

Technical parameters

4/14

Installation

7/14

Handing safety

9/14

Limited Warranty

14/14

# Product introduction



1. The speed of moving, removing and sorting rocks from farms or work sites is very fast, and can remove rocks as small as 2 inches or as large as 2 feet in diameter.
2. With its 1-inch-thick high-carbon steel tines and hydraulic power that can rotate 360 degrees, the reel can quickly and easily pick up concrete, gravel, wood and other general debris.
3. Save you time and money, so as to better recover your equipment investment.
4. Designed in accordance with industry-leading standards and has heavy-duty features that can handle the most difficult Work.
5. Quickly picks up rocks with diameters of 20 cm to 50 cm from the ground.
6. The hydraulic introducer pushes the rocks to the bottom of the bucket, separating the soil.
7. The picker is mounted on the arms of a skid steer or telescopic loader.
8. Compact design, and all materials are robust agile and very easy to handle.
9. Ideal for working in areas with low rock density.
10. Lightweight and suitable for use on all types of ground and in all spaces.
11. Easy and quick maintenance.

# Operator

Congratulations on owning this Skid Steer Rock Picker Bucket! Your Skid Steer Rock Picker Bucket are carefully designed and manufactured to provide you with years of reliable service.

Your Skid Steer Rock Picker Bucket will need some minor maintenance to keep it in excellent working condition.  
Please follow all safety precautions and maintenance procedures described in this manual.

Please read and understand the instructions in this manual carefully before operation.  
Please refer to the "Safety Labels" section for all instructions noted above.  
No one is allowed to operate his equipment who has not fully read and understood this manual and has not been trained in safe deposit box operations.

Remember to use only parts replaced by the manufacturer.  
Replacement parts may not meet the standards required for safe and reliable operation.

# Safety precautions

## BEFORE OPERATION

1. The operator must read the operation manual carefully before installation, operation or maintenance. Improper operation will cause the machine damaged or the operator dead.
2. Read all the safe signs and safe declarations. Obey all the professional safe terms, local laws or the professional directions.
3. Familiar with the duty Skid Steer Rock Picker Bucket about functions, specs and operation. Replace the to-be-damaged parts in time. Make sure all the hydraulic installations and couplings connect firmly, and all the safe signs stick on the suitable positions clearly.

ALWAYS watch for overhead power lines.

- NEVER position your body or limbs under an unsupported cutter deck.
- NEVER position your body or limbs under an unsupported cutter deck.
- NEVER operate this rock bucket when bystanders are within 300 feet of your work area. Flying debris could cause serious injury or death.
- NEVER position your body or limbs under an unsupported cutter deck.
- DO NOT allow this machine to contact buildings, utilities, large rocks or tree stumps or you may lose control of the skid steer loader.
- NEVER use drugs or alcoholic beverages while operating or servicing this machine. ALWAYS operate this attachment during daylight or well-lit areas.
- To prevent the skid steer loader and implement from rolling forward, stop the engine and set the parking brake when exiting the skid steer loader. Inspect implement for missing hardware prior to using this machine.
- DO NOT allow children to play on or around this equipment at any time. Store this implement in an area not frequented by children.
- ALWAYS wear the proper personal protection equipment while operating or servicing this machine.
- NEVER operate or service this machine with bare feet, sandals, or other light footwear.
- ALWAYS use eye protection while operating or servicing this machine.
- DO NOT speed! Keep your driving speed between 2 and 5 mph. Wear appropriate safety glasses, goggles or face masks Control Skid Steer Rock Picker Bucket work, or any operation caused by dust, flying Debris, or any other hazardous material.



Wear appropriate safety glasses, goggles or face masks Control rock picker work, or any operation caused by dust, flying Debris, or any other hazardous material.



# Technical parameters

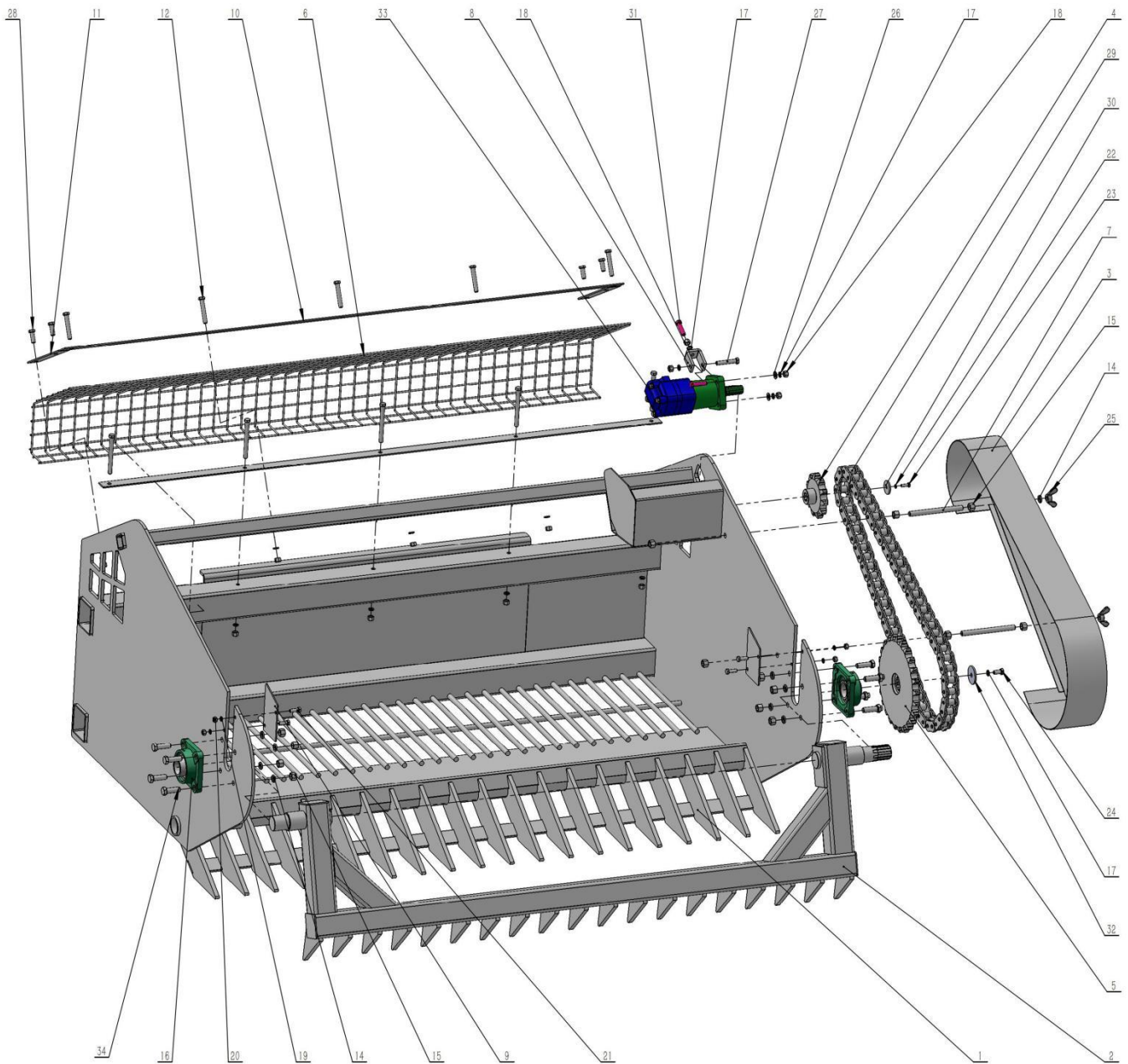
Model:	SSRPB80
Hydraulic circuits:	1
Working width:	78 in
Total width:	63"
Total height:	41"
Total length:	88"
Total weight: (lb)	1499
Motor:	Cycloid Motor
Working Width:	78 in
Working Pressure (MPa)	17
Flow (L/min)	60-100
Maximum Speed of Picking Up Stones (r/min)	62
Min. Picking Stone Diameter	19/16"

## Work environment:

Temperature: - 20 ~ 50 °C  
Height: 100 meters or less  
Relative humidity : ≤85%



# Technical parameters



S/N	PART DESCRIPTION	QTYS	NOTE
1	Frame welded	1	
2	Holding claw shaft welding	1	
3	Sprocket guard soldered	1	
4	11 tooth sprocket welding	1	
5	25 tooth sprocket welding	1	
6	After netting	1	
7	Sprocket guard retaining rod	2	
8	Sprocket tension adjusting wheel	1	
9	Bearing seat baffle plate	2	
10	Long clamp	2	
11	Short clips	2	
12	Bolt(M12*80)	5	
13	Bolt(M12*130)	5	
14	Spring washers( $\phi$ 16)	12	
15	Hexagonal nut (M16)	14	
16	Bearing with square seat	2	
17	Spring washers ( $\phi$ 12)	20	
18	Hexagonal nut (M12)	19	
19	Spring washers ( $\phi$ 10)	4	
20	Hexagonal nut (M10)	4	
21	Bolt (M10*30)	4	
22	Spring washers ( $\phi$ 8)	1	
23	Bolt (M8*25)	1	
24	Bolt (M12*25)	1	
25	Butterfly nut (M16)	2	
26	Flat washer ( $\phi$ 12)	2	
27	Bolt (M12*70)	1	
28	Bolt (M12*35)	4	
29	The chain	1	
30	Upper sprocket locking gasket	1	
31	Bolt (M12*50)	3	
32	Tool shaft retaining washer	1	
33	Two motors	1	
34	Bolt	8	



# Installation

## Unpack and check

Check for missing or damaged components according to the packing list. If you have any questions, please contact the supplier. List of details As the table above:

## Machine installation

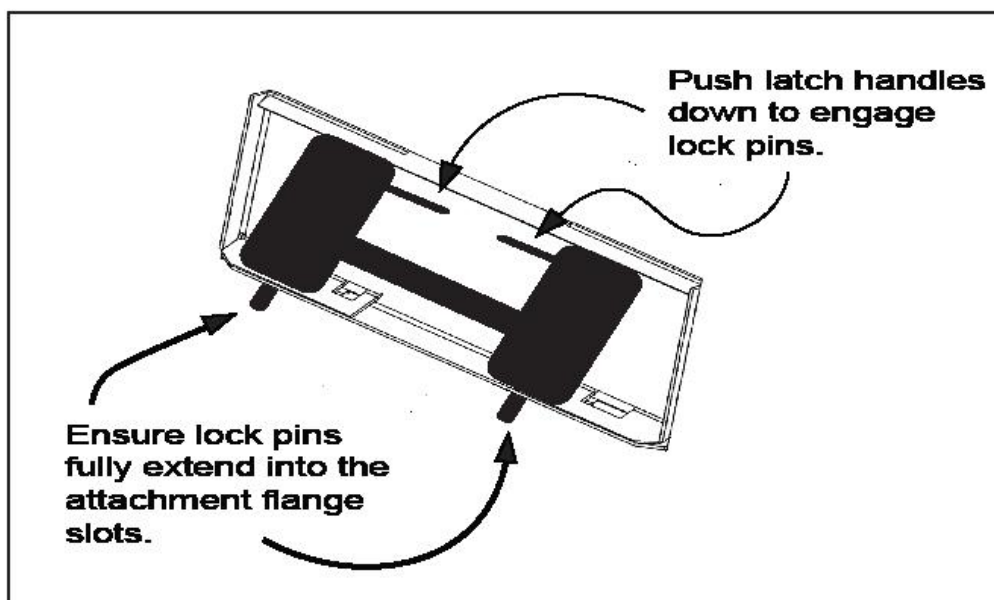
Equipment must be installed on a solid concrete floor or similar. If the ground is not firm, it will not be able to connect to the loader. There should be a space around the device for easy operation.

## Connecting Brush Cutter

Connecting Rock Bucket Consult your skid steer operator's manual for specific instructions on how to connect to your rock bucket loader.

## General Attachment Method

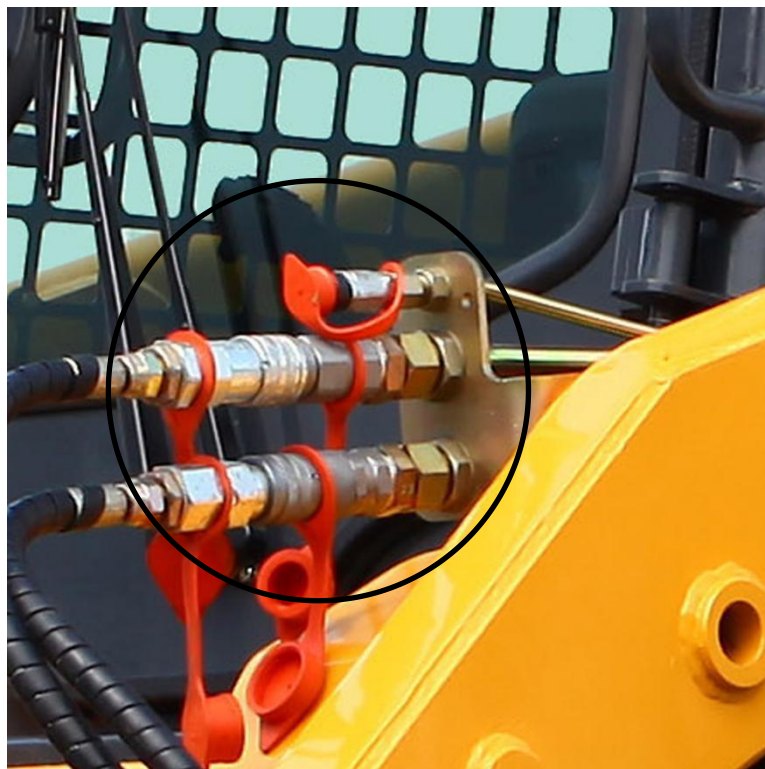
1. Make sure the hydraulic lines are clear from the front side of the rock bucket attachment plate and that the locking pins on the skid steer mounting plate are retracted.
2. Drive forward and place top of skid steer mounting plate under the attachment mounting flange. See Figure below.
3. Slowly raise and tilt back the skid steer mounting plate until the brush cutter attachment plate rests flat against the skid steer mounting plate.
4. Activate your skid steer's lever lock switch to engage and lock the pins into the flange slots of the brush cutter's attachment plate. If your skid steer does not have this switch, push the latch handles down until you can see the lock pins extend into the attachment flange.
5. Connect the attachment hydraulic hoses and the case drain hose (SBCNS model only) to the auxiliary supply couplers located on your skid steer loader lift arm.



Skid Steer Mounting Plate to Attachment Mounting Flange

# Installation

Note: this drawing does not represent the appearance of the equipment  
For actual purchase, this figure is only for installation location reference.



Tubing connection: the rock bucket is equipped with two tubing, one is the inlet tubing and the other is the outlet tubing. Connect the tubing to the loader tubing connection.

# Handling safety

## Maintenance Overview

The maintenance procedures described in this manual should only be carried out by qualified mechanics who have been trained to repair this machine.

Some procedures require special tools and skills to complete. **DO NOT** attempt to repair or perform service work on this machine unless you have the skills and tools to do so. Contact your local dealer for maintenance and repair services.

## NOTICE

Improper maintenance or modifications to the design or performance of this machine will void the warranty. **ONLY** use genuine AGT equipment manufacturing replacement parts on this machine.

## Safety Instructions

- Obey the following safety instructions when servicing or repairing this machine.
  
- Wear proper Personal Protective Equipment (PPE) while working on this machine, which may include safety glasses, hard hats, steel toe boots, gloves, etc.
  
- Wear a welding helmet when welding to protect your eyes, face and neck from flash burn, ultra-violet radiation and heat.
  
- Ensure all jack stands, lifts and hoists are in good working condition and have the rated load capacity to support the load.
  
- If servicing is performed while the brush cutter is attached to the rock bucket, turn engine off, set parking brake and chock wheels to prevent skid steer from moving.
  
- Only perform service work in a well-lit area.
  
- Allow the machine to cool down before servicing this machine. Hot oils can burn your skin.

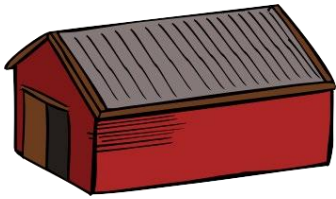
# Handling safety

## Storage Tips

To get years of quality use out of your rock bucket, follow these storage tips:



Ensure rock bucket is free of debris, dirt, grime and grease.



Store your rock bucket in a dry shed or garage.



When storing your rock bucket for the season, cover with a weather proof tarp to protect it from the elements.

# Handling safety

## OSHA 1910.266 Appendix A - First-aid Kits

Source:

[http://www.osha.gov/pls/oshaweb/owadisp.show\\_document?p\\_table=STANDARDS&p\\_id=9863](http://www.osha.gov/pls/oshaweb/owadisp.show_document?p_table=STANDARDS&p_id=9863).

Accessed: 16 Dec 09

The first-aid kit information below was directly obtained from OSHA regulations. Having a kit available at the job site is required by OSHA for logging operations and is highly recommended by AGT Manufacturing.

The following list lists the minimum number and type of first aid supplies acceptable for first aid kits as required under the SOP. The contents of the first-aid kit listed should be adequate for small work sites, consisting of approximately two to three employees. When larger operations or multiple operations are being conducted at the same location, additional first-aid kits should be provided at the work site or additional quantities of supplies should be included in the first-aid kits:

1. Gauze pads (at least 4 x 4 inches).
2. Two large gauze pads (at least 8 x 10 inches).
3. Box adhesive bandages (band-aids).
4. One package gauze roller bandage at least 2 inches wide.
5. Two triangular bandages.
6. Wound cleaning agent such as sealed moistened towelettes.
7. Scissors.
8. At least one blanket.
9. Tweezers.
10. Adhesive tape.
11. Latex gloves.
12. Equipment such as resuscitation bag, airway, or pocket mask.
13. Two elastic wraps.
14. Splint.
15. Directions for requesting emergency assistance.



# Handling safety

## Inspection Checklist

This checklist is to be completed prior to every use of the rock bucket. DO NOT use a rock bucket that fails inspection until it has been repaired.

Check for damaged hoses or hydraulic leaks. See hydraulic safety precautions in this manual.

Check for cracked welds.

Check for bent or damaged components.

Check for damaged cylinder pins.

Check for missing or loose fasteners (bolts, nuts, snap rings, etc.)

Inspector Name

Date

\* \* \* IMPORTANT \* \* \*

If you are using your Skid Steer Rock Picker Bucket as part of a commercial operation it is HIGHLY recommended that you keep a copy of all inspections performed on the machine and the Skid Steer Rock Picker Bucket. Also maintain records of repairs that are performed as a result of failed inspections. OSHA inspectors will likely ask for proof that you are taking steps to mitigate risks and to comply with OSHA regulations. Refer to [www.osha.gov](http://www.osha.gov) on the Internet and search for "1910.266" to display regulations specific to logging operations.

# Handling safety

## Safely Checking for Hydraulic Leaks

**WARNING:**

There is significant risk of injection from the high pressure spray at hydraulic leaks

- The tremendous energy used to operate the machine and attachments can be stored in the hydraulic system even when the machine engine is off.
- Very serious injuries from hydraulic fluid injection can seem insignificant at first. Often it can seem

like a pin prick or tingling, but later it may require amputation. **HIGH PRESSURE LEAKS ARE**

**OFTEN INVISIBLE.**

Hydraulic system injuries can include:

- Burns from hot fluid
- Injection of hydraulic fluid
- Trauma from energized components or flailing lines

DO	DO NOT
<p>Always Lock Out Tag Out machine controls before working on the machine or attachment.</p> <p>Always use the methods recommended by the manufacturer to block loader arms and other moving components to prevent accidental movement.</p> <p>Always use appropriate PPE (Personal Protective Equipment) when working on/around machinery.</p> <p>Take an approved safety course related to hydraulic systems. Local university extension programs and equipment dealers will offer training on hydraulic safety.</p>	<p>DO NOT use your hands, or other body parts, to inspect for hydraulic leaks.</p> <p>DO NOT position yourself in pinch points when the machine has not been properly blocked, locked out and tagged out.</p> <p>DO NOT "crack" a hydraulic fitting to release hydraulic pressure. Severe risk of injection.</p> <p>DO NOT tighten or loosen hydraulic components when the system is pressurized.</p> <p>DO NOT assume that the system is depressurized.</p>

# Limited Warranty

The goal of agrotkindustrial.( “AGT” ) warranty policy is to assure confidence, reduce downtime and minimize cost of ownership. Should you want to verify warranty, or should potential issues arise, please contact your authorized dealer or AGT’ s Customer Service Team at [service@agrotkindustrial.com](mailto:service@agrotkindustrial.com), +1 913-244-6269 and we will strive to resolve any issues in a timely manner.

AGT Attachments ( “AGT” ) offers a Limited Warranty on Shear, Grapple, and Puller Attachments delivered hereunder against faulty workmanship and use of defective materials for a period of twenty four (24) months from the date of shipment to the original purchaser from USA and/or USA Authorized Dealers. AGT offers a Limited Warranty on Saw Attachments against faulty design, material, and workmanship for normal use when properly maintained for a period of twelve (12) months from date of shipment. The Warranty for all products listed above and delivered hereunder to Rental users is for a period of six (6) months from the date of shipment to the original purchaser. Seller offers a Limited Warranty for miscellaneous parts and accessories such as cylinders, hoses, switches, valves and wiring delivered hereunder against faulty workmanship and use of defective materials for a period of three (3) months from the date of shipment. This warranty does not include, and there in hereby excludes, maintenance parts and consumables including but not limited to hydraulic fluid, oil, belts, teeth, blades, filters and other similar items.

AGT offers a Limited Warranty on Auger Attachments against faulty design, material, and workmanship for normal use when properly maintained.

Auger Gearboxes are warranted for a period of sixty (60) months from date of shipment, Auger Motors are warranted for twenty four (24) months from date of shipment. Auger Bits, Frames and Cradles are warranted for a period of twelve (12) months from date of shipment. Refer to the Product Manual for proper maintenance procedures. Spare, Replacement and After Warranty Parts including hoses and components are warranted for three (3) months. AGT Auger Teeth, Pilots, Adaptors and Extensions are manufactured with a patented design to interface with AGT Auger attachments extensions and adaptors. The use of attachments other than AGT Auger Teeth, Pilots, attachments, extensions and/or adaptors, will void all warranty on Auger Drive and Bits. The use of AGT adaptors on unapproved attachments is not sanctioned. A “home-made” or non-standard attachment outside the specifications for the machine will void the warranty.



[sales@agrotkindustrial.com](mailto:sales@agrotkindustrial.com)

<https://www.agrotkindustrial.com/>