



**ACUTUS
LABORATORIES**



Certificate of Analysis

Issued to:

ISSUED TO: NatureCan, Bank Chambers, Stockport, SK1 1AR

Sample details

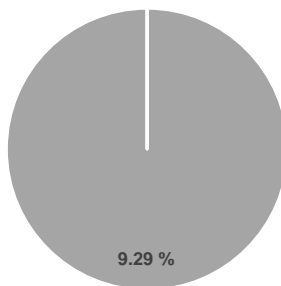
DATE RECEIVED	14-Jul-22	PRODUCT NO.	NC0021
SAMPLE TYPE/DESCRIPTION	Naturecan Sweet Peach Tea & Lychee 100mg/ml (1000mg)	BATCH NO	D0001
ACUTUS SAMPLE NO.	S07010	DATE TESTED STARTED	14-Jul-22
PERFORMED BY	Shireen Everitt	DATE TESTING COMPLETE	14-Jul-22

Certificate no: COA-CBD-736 V 1.0

All analyses were performed using the High-Performance Liquid Chromatographic (HPLC) method SOP/LAB/0038 V2.0 and quantification of Cannabinoids carried out using a certified reference standard. Note: This method is not an ISO standard test method.

Cannabinoid profile

- CBD-A
- CBG
- CBD
- THC-V
- CBN
- Δ9-THC
- Δ8-THC
- THC-A



Compound	Result (%)	Result (mg/ml)
Cannabidiolic acid (CBD-A)	N.D.	N.D.
Cannabigerol (CBG)	N.D.	N.D.
Cannabidiol (CBD)	9.29	99.03
Tetrahydrocannabivarin (THC-V)	N.D.	N.D.
Cannabinol (CBN)	N.D.	N.D.
Delta-9-Tetrahydrocannabinol (Δ9-THC)	N.D.	N.D.
Delta-8-Tetrahydrocannabinol (Δ8-THC)	N.D.	N.D.
Tetrahydrocannabinolic acid (THC-A)	N.D.	N.D.
Total Cannabinoids	9.29%	99.03 mg/ml
Total Potential THC**	0.00%	0 mg/ml
Total Potential CBD**	9.29%	99.03 mg/ml

LOQ = 0.2 µg/ml

N.D. = Not Detected

% = % (w/w) = Percent (Weight of Analyte / Weight of Product)

* Total Cannabinoids result reflects the absolute sum of all cannabinoids detected

** Total Potential THC/CBD is calculated using the following formulas to take into account the loss of carbonyl group during decarboxylation step

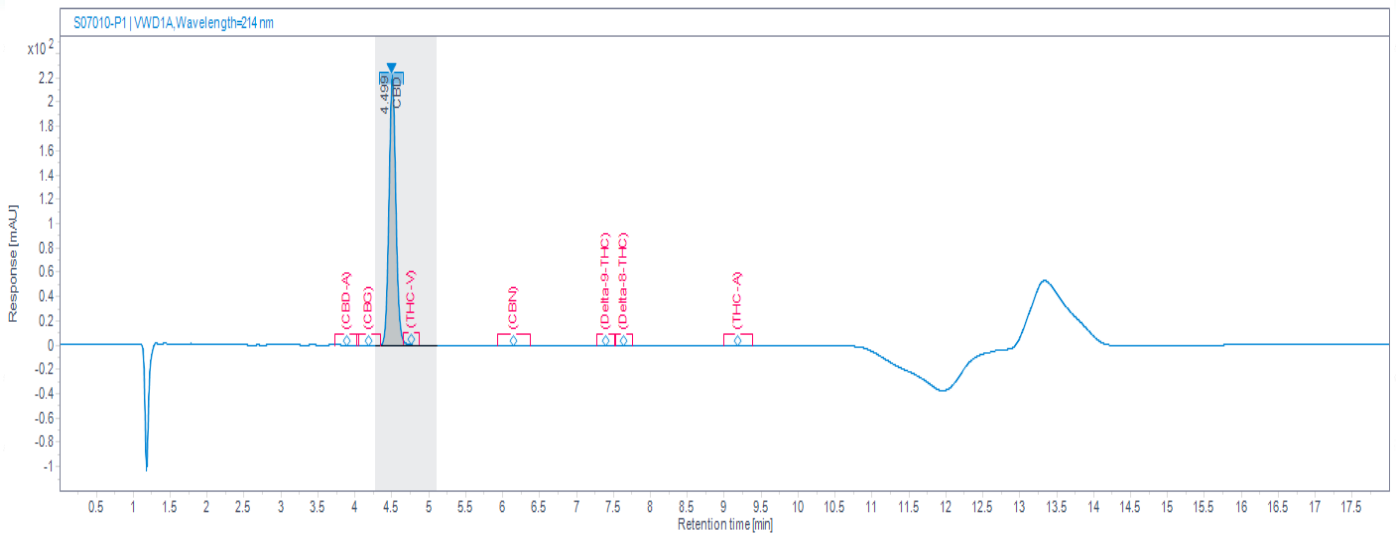
Total THC = Δ9-THC + (THC-A * (0.877)) and Total CBD = CBD + (CBD-A * (0.877))



**ACUTUS
LABORATORIES**

Certificate of Analysis

HPLC Chromatogram



Additional Notes

Sampling is excluded and is the responsibility of the supplier.

*All results reported in this certificate only relate to the sample and batch tested.

Method and measurement uncertainty available upon request.

No statement of compliance with specifications is made or implied on this certificate. However, measurement results are reviewed, where applicable, to establish where any measurement result exceeded the manufacturer's specifications.

AUTHORISED BY:

Shireen Everitt

SIGNATURE:

DATE:

14-Jul-22

Signed by: S-1-12-1-2299596759-1105525858-402682035-3513694014/3bd31e99-5648-4abf-a51e-3aa049736e9c

Contact: Acutus Laboratories: Unit G3, Inspire Business Park, Carrowreagh Road, Dundonald,
BT161QT, UK

Email: info@acutuslabs.co.uk

Tel: +44 (0) 2895622010