



Customer: NATURECAN
 Address: Bank Chambers, Stockport, SK11AR

Sample ID: NATURECAN 10mg Broad Spectrum Gummy KI7490 Production Batch Random Sample
 Matrix: Edible
 Labnumber: 21B0133-03

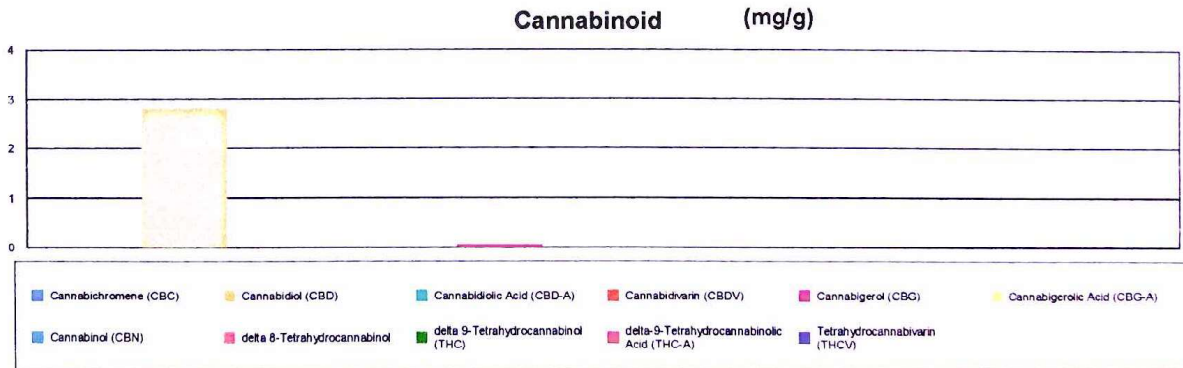
Cannabinoid Profile

Test Conditions: 20°C
 Extraction Technician: SH
 Analytical Chemist: SH

Extraction Date(s)	Analysis Date(s)
2/4/2021	2/4/2021

Cannabinoids (HPLC)	Results			
	LOD (mg/g)	%	mg/g	mg/gummy
Cannabidivarin (CBDV)	<0.003			
Cannabidiolic Acid (CBD-A)	<0.003			
Cannabigerolic Acid (CBG-A)	<0.003			
Cannabigerol (CBG)		0.006	0.059	0.230
Cannabidiol (CBD)		0.28	2.82	11.0
Tetrahydrocannabivarin (THCV)	<0.003			
Cannabinol (CBN)	<0.003			
delta 9-Tetrahydrocannabinol (THC)	<0.003			
delta 8-Tetrahydrocannabinol	<0.003			
Cannabichromene (CBC)	<0.003			
delta-9-Tetrahydrocannabinolic Acid (THC-A)	<0.003			
Cannabinoids Total		%	mg/g	
Max Active THC		0.00	0.00	
Max Active CBD		0.28	2.82	
T.Active Cannabinoids		0.29	2.88	
Total Cannabinoids		0.29	2.88	

Following USDA guidelines on uncertainty, Altitude Consulting's uncertainty is calculated to be +/- 2% for all cannabinoids using a coverage factor of 2 (95% confidence interval). Measurement uncertainty has not been factored into reported values.



Gary Brook - Laboratory Director - 2/5/2021

Reporting Limits will vary based on sample extraction weight used for the analysis.

Altitude Consulting, LLC utilizes NIST traceable Reference Standards and Certified Reference Material to calibrate analytical instruments along with proven analytical methods. The methods are applied in the most ethical manner following good laboratory practice guidelines. The results of this report are based solely on the sample submitted and cannot be reproduced. Decision Rule: Measurement uncertainty is not accounted for in the reported values. Results are based solely on calculated numbers. Altitude Consulting makes no Statements of conformity.