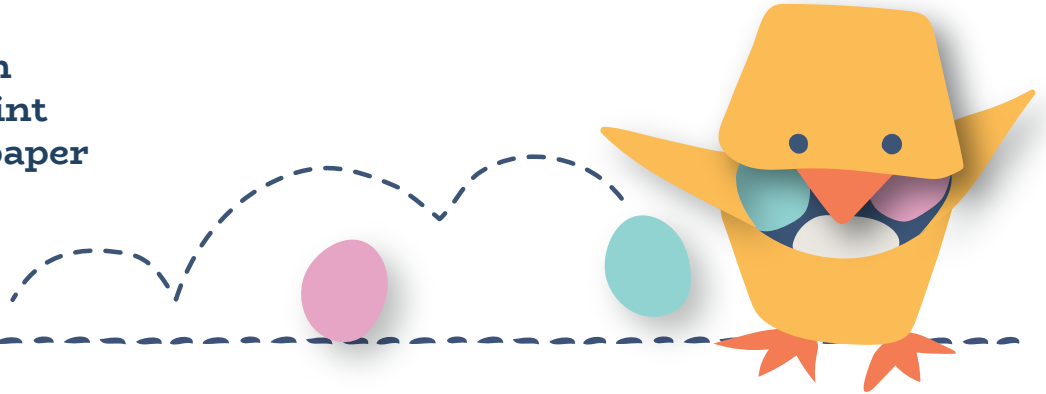


Hungry chicks!

Create a friendly chick to store your mini chocolate eggs in this Easter.

What you need:

- An empty egg carton
- Child-safe yellow paint
- Orange and yellow paper
- Sticky tape
- Glue
- Black marker pen

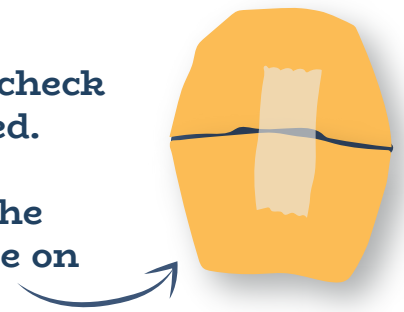


Instructions:

Step 1: Cut out two egg holder sections from the egg carton and trim them so they are the same height.

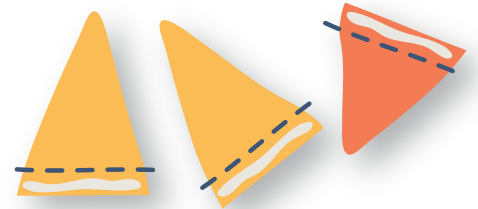
Step 2: Place them together to make an egg shape and check they fit together well. Trim more off the edges if needed.

Step 3: Place a little piece of tape on the inside where the cardboard will act as a hinge. Then place a piece of tape on the outside too.



Step 4: Open your chick up and paint it yellow on the inside. Then, flip it over and paint the outside. Repeat this step at least once so that your chick has a strong yellow appearance.

Step 5: Cut out two yellow triangles for the wings of the chick and one orange triangle for the beak.



Step 6: Fold one edge of the first yellow triangle piece and place a small amount of glue onto the folded edge. Press the edge into the bottom left side of your chick to act as a wing. Now do the same on the other side. Then attach your orange triangle to the top front edge, this will be the beak.

Step 7: Cut out 2 little feet with your orange paper and attach those to the bottom of your chick.



Step 8: Draw some eyes onto your chick with your marker pen. Your chick is ready to be fed some chocolate!

Top tips:

- Make sure the paint is dry before you start glueing the wings and beak on, otherwise it will get messy!
- If you don't have orange and yellow paper, simply use white paper and colour it in with a felt-tip pen.