

Amada Xtreme

Fitment Instructions

Make & Model: Toyota Hilux / Fortuner / Prado 120 / FJ Cruiser

Models: 2006 Upwards

Warning: This procedure only to be carried out by a qualified technician, note that these are guidelines and care should be taken carrying out any mechanical work. Using incorrect tools and methods can result in injury, only use quality tools. **Note:** This fitment instructions are only guidelines on front strut removal for the specified vehicle models, we cannot take any responsibility to personal injury or vehicle damage by following these instructions

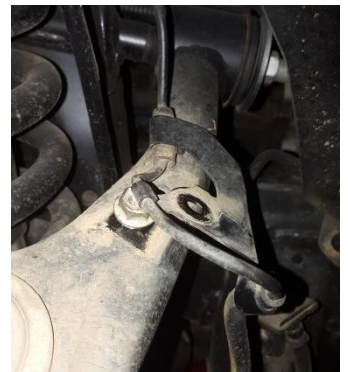
Tools required: 12mm, 14mm, 17mm, 19mm

Estimate removal time: 45minutes

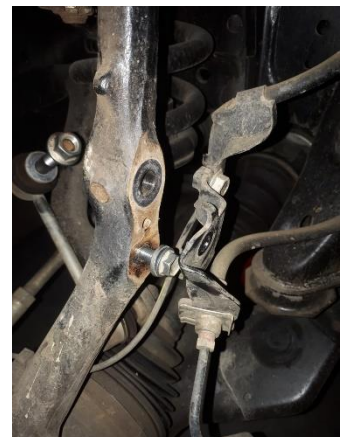
Technical support: 012-6532669 (Mondays to Friday 8h00 – 16h30)

1. Remove from wheels and raise the vehicle from the ground, ensure the vehicle is stable and safe before starting with any work

2. Remove the ABS wire from the top control arm, take special care as the wire can be damage easily



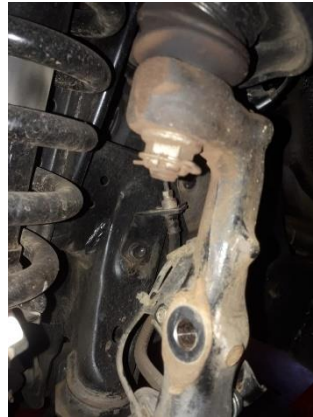
3. Loosen the Sway bar link bolt and brake hose bracket with ABS wire,
a. Pull the sway bar link from the strut assembly,
b. Check sway bar link for wear, should the ball joints feel loose this link should be replaced



Amada Xtreme

4. Remove C-Clip from top control arm ball joint and loosen the nut. Do not remove the nut at this stage

- a. Use a hammer or ball joint release tool to release the upper ball joint joint



5. Remove C-clip from tie-rod end and remove the nut

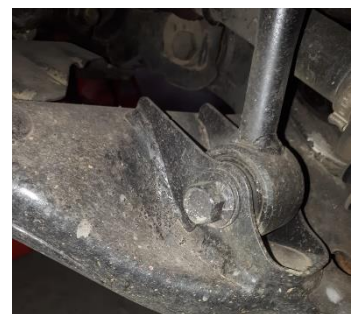
- a. Use hammer or ball joint tool to release the tie-rod end
- b. Check rack end and tie-rod end for play or damage to the rubber boot, Replace.



6. Remove the 3 x bolts from the top chassis mount



7. Remove shock bottom bush bolt and nut from lower control arm



Amada Xtreme

8. Remove the upper ball joint nut and take care as the upper control arm might be under tension and will go upwards
- Take care the moment the upper ball joint is released, the brake & hub assembly will be relative loose
 - Raise the anti-roll bar, make sure its loosen left and right hand side before this done
 - The strut (shock assembly) should now be ready to be removed, raise the strut and remove from the bottom bracket first them remove the struts downwards



9. Compress the coil spring with a Heavy Duty professional coil spring compressor and remove the top nut from the coil spring, remove the strut mount & rubber from the strut assembly. Inspect the strut mount, should there be damage on the strut mount or rubber, replace with new

10.

