

Skull Plate / Shed Antler Attachment

Over the years I have used many different attachment systems and techniques for attaching shed antlers together for antler mounts, European skull mounts as well as head mounts. The following is the method I find to be the best for re-attaching sheds for a natural attitude. This method is very strong and if done properly will not break loose if bumped.



TEST FIT AND TRIM THE SKULL PLATE

The first step is to test fit and trim the synthetic skull plate to fit. It should align just like a bone skull plate would. Follow the same directions if you are doing an antler mount or European skull mount.



DRILL A HOLE THROUGH PEDICLE

Using a larger spade bit than the steel bar, bore a hole through the center of the pedicle where the burr will attach. Continue the depth of this hole through the wood head block.

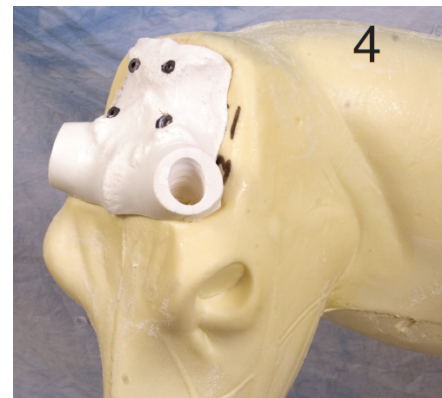


TEST FIT SQUARE STOCK

Insert the pre-cut pieces of square stock into the holes, making sure they seat deep enough yet leaving enough to insert 2"-3" into the main beam. A sloppy fit is desired.



Attach the skull plate to the form using dry wall screws. (3 - 4 Depending on the size of antlers.)



At this point, skull plate will be attached and both holes will be drilled to receive square stock.



DRILL A HOLE IN THE MAIN BEAM

Bore a hole 2"-3" into the center of each main beam to receive the square stock.



TEST FIT ANTLERS
 With the steel stock in place, place the antlers on the bars. Hold in the desired angle and spread. Make sure at this point that you have a somewhat loose fit.



Over fill the cavity and allow the excess to flow out. This will be trimmed away while it is soft.



GLUE THE BAR TO THE SKULL PLATE
 Fill the cavity in the skull plate only with reinforced auto body putty or bondo. Mix with enough hardener for a 5 to 7 minute set time.



GLUE THE BAR TO THE SKULL PLATE
 Insert the bar into the skull plate and immediately place both antlers on the bar for a test fit. At this point, you are only gluing the bar to the skull plate. Antlers will slide on and off for this step.



GLUE ONE ANTLER TO THE STEEL BAR
 Fill the cavity in one antler and reinsert both antlers on the square stock. An extra person is a great help to eyeball the angle or add an extra set of hands.



ONE DOWN ONE TO GO
 One antler should be solid and secure. If anything goes wrong, you'll have 10-15 minutes to twist off and re-attach.



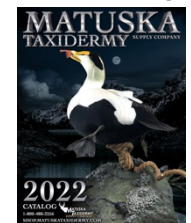
REPEAT
 Once one side is attached and secure, repeat the procedure with the other side.



Follow us to stay Up-to-date on sales, new products and tech tips



Scan barcode with your smart phone to visit our website!



Call today for a FREE catalog

1-800-488-3256 shop.matuskataxidermy.com