

MAGNUSON

SUPERCHARGERS

HP *tuners*



**COUPON CODE
LOCATION**

WARNING: IF YOU HAVE A 2015+ CHYRSLER, DODGE, OR JEEP YOU WILL NEED TO REMOVE YOUR PCM AND SEND IT TO HP TUNERS FOR A FREE UNLOCK USING THE COUPON CODE SHOWN ABOVE.

**RTD Flash Tool Instruction
for Chrysler, Dodge and Jeep**

NOTES

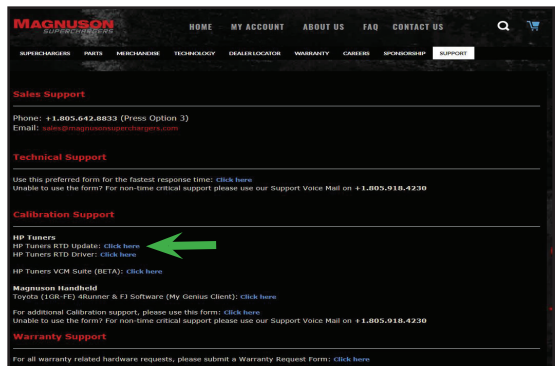
This installation requires a PC running Windows 10 and needs to have internet access at the vehicle. Apple products are not supported and there are issues with running older non supported versions of Windows.

Please take the vehicle to a dealer and verify that the vehicle is on the latest calibration offered from the OEM before proceeding.

1. Start by going to www.magnusonsuperchargers.com and click on the "Support" tab at the top of the page.



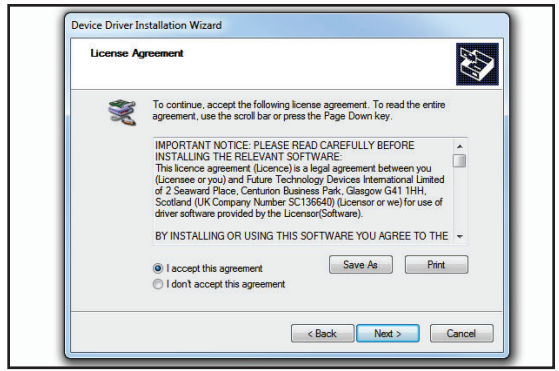
2. Click on the HP Tuners RTD Update link under Calibration Support. Also click on the HP Tuners RTD Driver link.



3. Once you have downloaded the RTD Flasher software follow the prompts for the setup wizard.



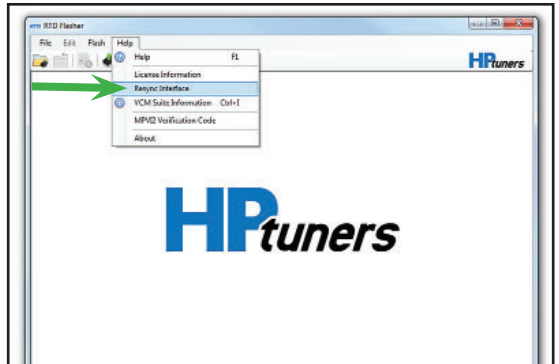
4. Follow the installation Wizard to install the device drivers for the RTD flash tool.



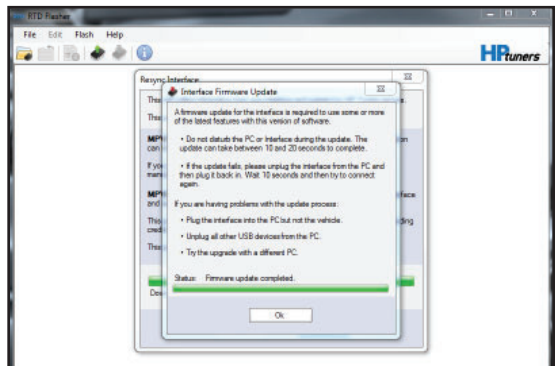
5. Gather the provided RTD flash tool and USB 2.0 connection cable. Connect this to your laptop.



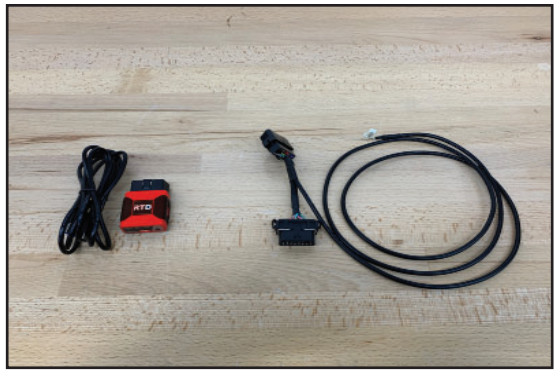
6. Now select "Help" and then Resync Interface.
You must Resync your RTD flash tool before use.



7. Follow any on screen directions for the Interface Firmware Update. You should see a "Firmware update completed." statement once the process is done.



8. Gather the supplied HP Tuners RTD flash tool and cables shown. The cable on the right is the bypass cable and it is not included in all kits.



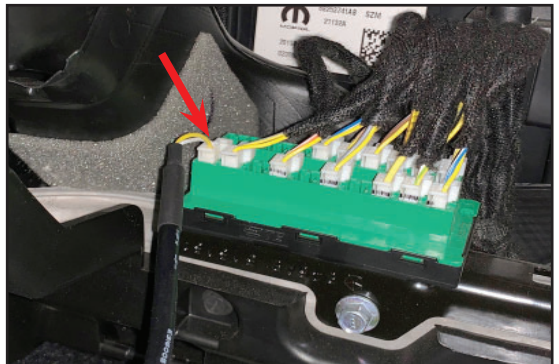
9. **The following 4 steps are for 2018+ vehicles that need the bypass cable.** Open the glovebox and push the tab at the rear to allow the glovebox to open all the way exposing the vehicle wiring harness.



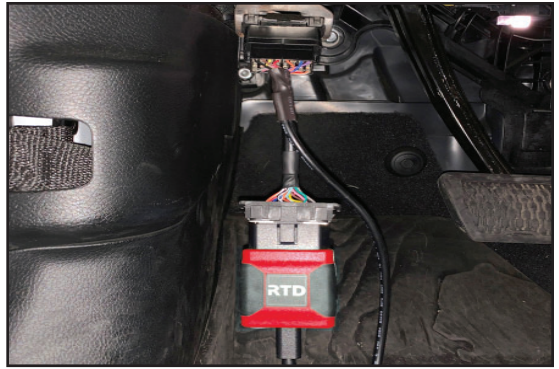
10. Locate the green connector shown.



11. Take the supplied bypass cable and connect the white connector as shown at the red arrow location. Route the cable along the base of the dash towards the OBD connector. Use zip ties to secure it out of the way.



12. Plug the end of the supplied connector into the ODB port. (The other end will be used when flashing with the RTD device.)



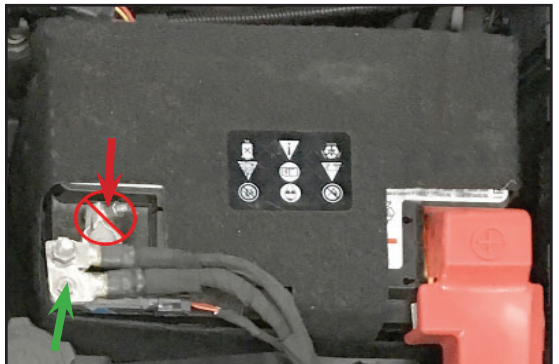
13. For 2012-2017 vehicles plug the RTD directly into the ODB port.



14. Connect a battery charger to the vehicle's battery to ensure that you have at least 12V at all times while following these instructions.



15. For Jeep owners you must attach the battery charger ground wire prior to the IBS unit at the green arrow location. **DO NOT** connect the ground of the charger to the pole clamp shown with the red arrow.



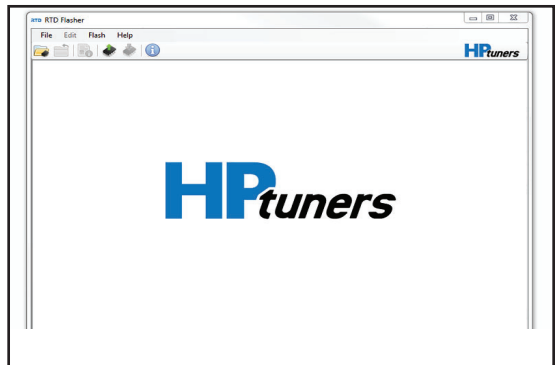
16. Using the RTD Flasher program you will now read the stock file information and the tool will upload the proper supporting file for your vehicle onto your laptop.



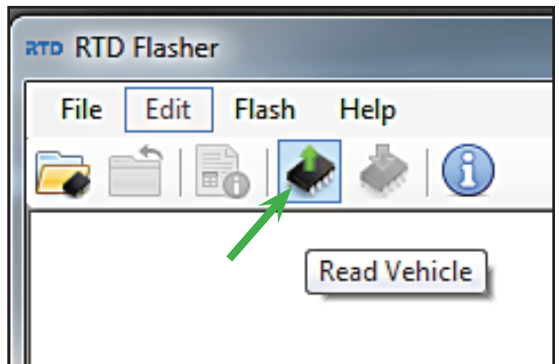
17. On Chrysler / Jeep applications with push start button, **DO NOT depress the brake (or clutch on manuals) pedal. You must push the button twice in order to completely power up all the vehicle systems. The gauges will sweep and the lights will come on in the dash.**



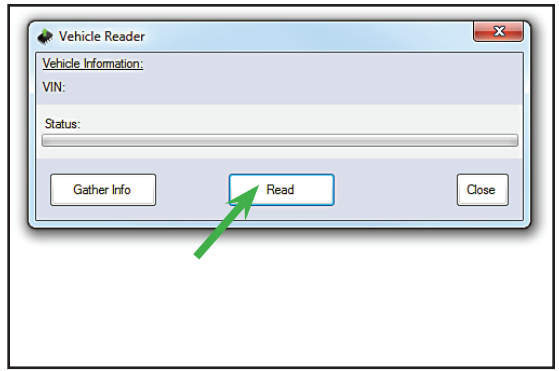
18. Open the RTD Flasher software.



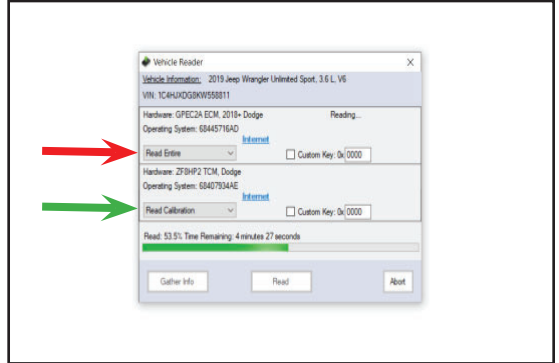
19. On the RTD Flasher Screen select the icon shown with the arrow to start reading the vehicle.



20. Select the read button to begin the process.



21. Choose “Read Entire” from the drop down menu for the ECM (red arrow location). Follow directions below the image for the TCM (green arrow location).
*Note: On newer vehicles that do not allow you to upload the transmission because the module is not supported or needs an additional unlocking process, please also deselect the TCM.

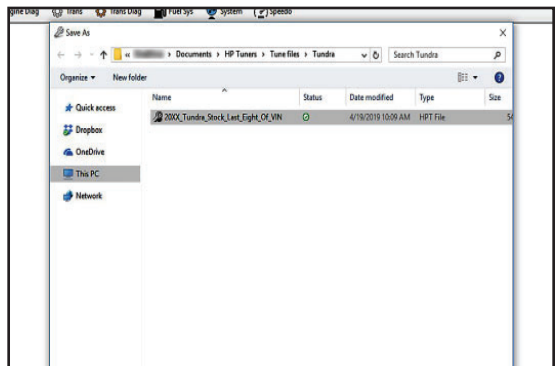


- **JL/JT TCM: Read Calibration**
- **JK TCM: Read Calibration**

22. Save the file with the following format:
20XX_Model_Stock_
Last_Eight_Of_VIN

The “XX” area will have the model year and the “VIN” area will have your vehicle identification number.

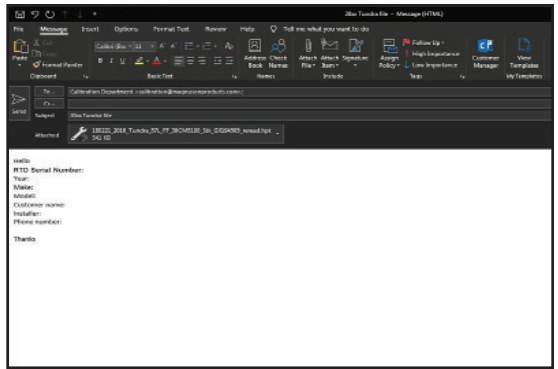
**(Example: 2020_JL_
Stock_LL123456)**



23. Once the upload is complete you can disconnect from the vehicle and email the file to:

**calibration@magnuson
superchargers.com.**

Please include the information shown in the next step with the email containing the file.



24. Information to include in email:

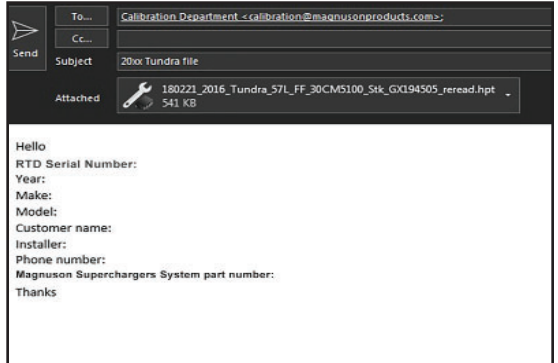
a. **Serial # of RTD
Flashing tool**

b. Customer Name/
Install Shop

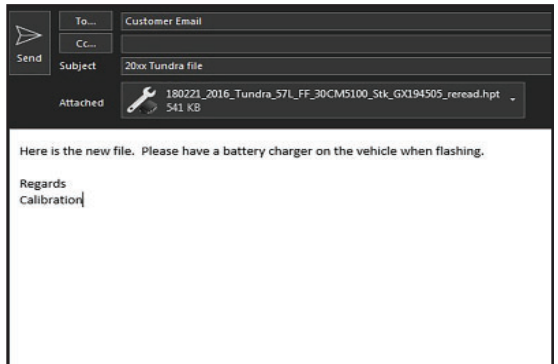
c. Contact information
including phone number
d. Year/Make/Model of
the Vehicle.

e. Magnuson
Superchargers System
part number.

**All information must
be provided for prompt
service.**



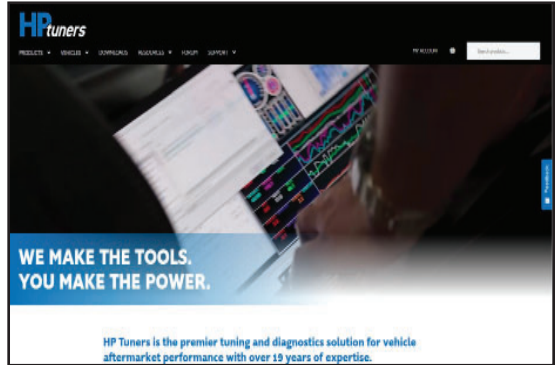
25. Once the new file is completed it will be emailed back to you. Please allow at least 24 hours Monday-Friday for the new file to be created



THE FOLLOWING FIVE PCM UPGRADE STEPS ARE ONLY FOR 2015+ CHRYSLER, DODGE, AND JEEP PRODUCTS.

26. Go to <https://www.hptuners.com/>. Create an account if you don't already have one. Locate the search bar in the upper right corner of the website.

Enter: **SM-001**



27. Fill out the following information on the “Dodge PCM Services” page:

- Under “**Service**”: Select “Upgrade”
- Under “**PCM Type**”: Choose Original (PCM from vehicle).
- In “**Upload your HPT or RTD File**”: Do not upload a file.
- Under “**VIN#**”: Enter the VIN of your vehicle.
- Click on “Add to cart”.

28. You should be directed to your shopping cart page. This is where you can enter the coupon code from the front page. The total should show up as \$0.00. Enter your billing and shipping information you want your upgraded PCM shipped to after upgrade process is completed. Once you have confirmed the information, place the order.

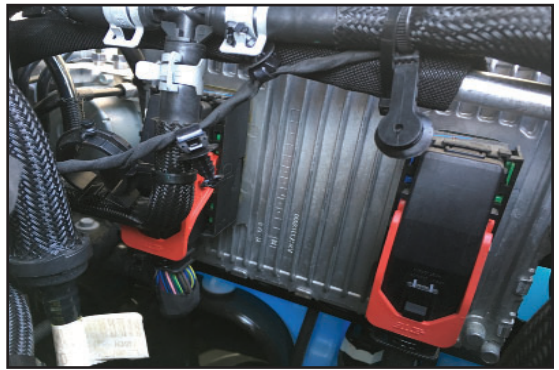
DO NOT REMOVE YOUR PCM FOR 2011-2014 Chrysler/Dodge 5.7L/6.4L HEMI AND 2012-2014 JEEP JK

29. Follow the instructions in the vehicle installation manual to remove the PCM from the vehicle. Fill out the shipping form at the end of these instructions. Place the shipping form inside the provided shipping box and **write your order number on the outside of the box**. Then, ship it to the address shown below:

**HP Tuners, LLC
ATTN: Dodge PCM Upgrade
700 Eastwood Ln
Buffalo Grove, Illinois 60089**

(You will have to pay for the shipment to HP Tuners but they will pay for the return shipping.)

30. Once HP Tuners receives your PCM, please allow 1-3 business days for the upgrade process to be completed (excluding shipping times). After you have received your PCM back from HP Tuners you will need to reinstall it according to the vehicle installation instructions.



31. **Once again connect a battery charger to the vehicle's battery to ensure that you have at least 12V at all times while following these instructions. Ensure that you ground it correctly for Jeeps as shown earlier.**



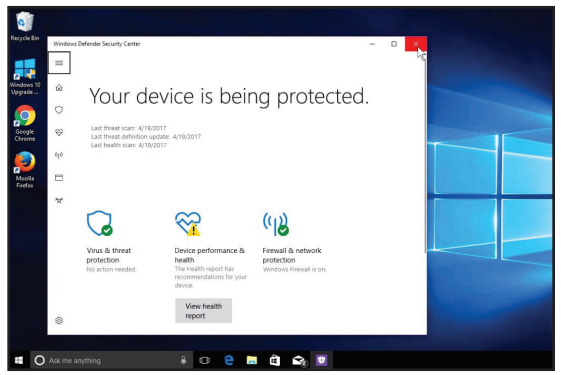
32. Reconnect to the vehicle OBD port (again needing internet access) and open the RTD Flasher program. **Use the bypass cable as you have done in previous steps for 2018+ vehicles.**



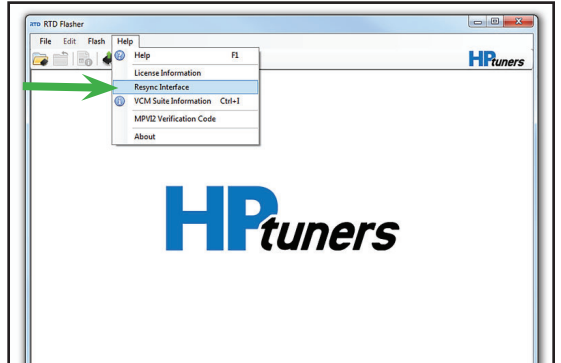
33. On Chrysler / Jeep applications with push start button, **DO NOT** depress the brake (or clutch on manuals) pedal. You must push the button twice in order to completely power up all the vehicle systems. The gauges will sweep and the lights will come on in the dash.



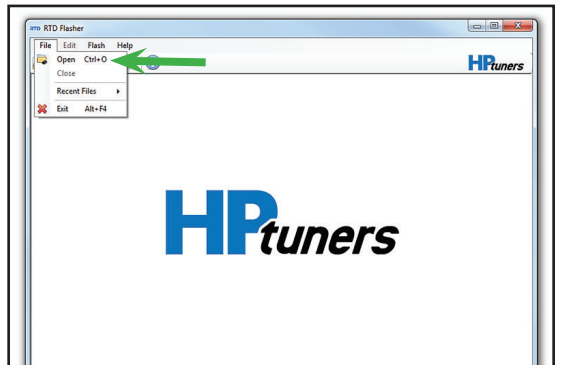
34. If you have a newer version of Microsoft Windows, you must “Disable” Windows defender or any other firewall in order to be able to write to the vehicle using HP Tuners.



35. Now select “Help” and then Resync Interface once again. **You must Resync your RTD flash tool before you can write the new file to your vehicle.**



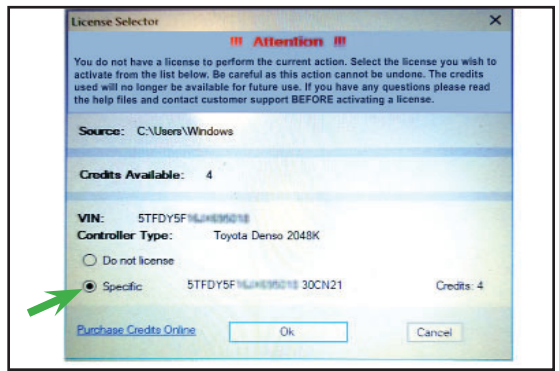
36. Open the new tune file that was emailed to you in the RTD Flasher software.



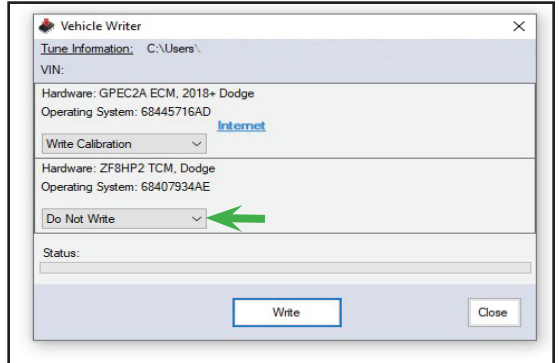
37. Select the “Write Vehicle” icon to download the program to the PCM. **DO NOT disconnect, try to stop or panic during the download. If there is a problem the program will abort the download.** (This process takes about 10 Minutes)



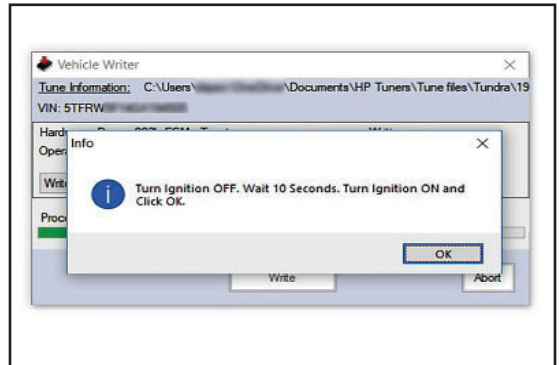
38. Select the “Specific” license that matches your vehicle. Then select “OK”.



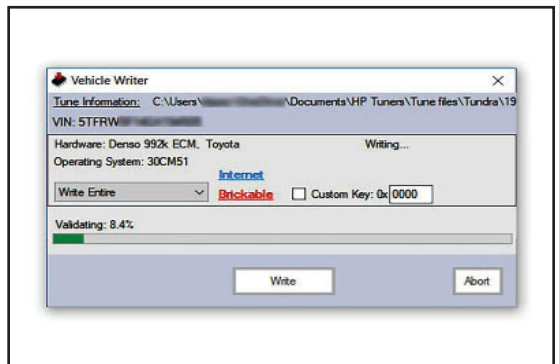
39. Select “write calibration” if the transmission file is included in your returned calibration file.



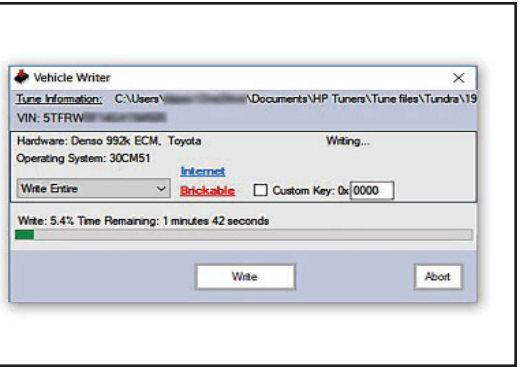
40. **Some vehicles will not show this “Info” window. Skip this step if you do not see this information on the screen.** You will be prompted to “Turn the ignition OFF. Wait 10 Seconds. Turn the Ignition ON and click OK.”



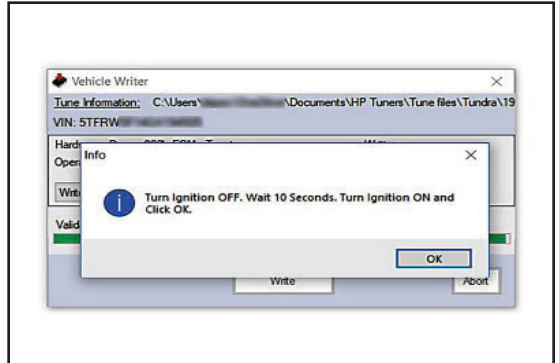
41. Validation will start after the write procedure.
*Note: Not all applications will show the validation process. You may only see a “Write Complete” message.



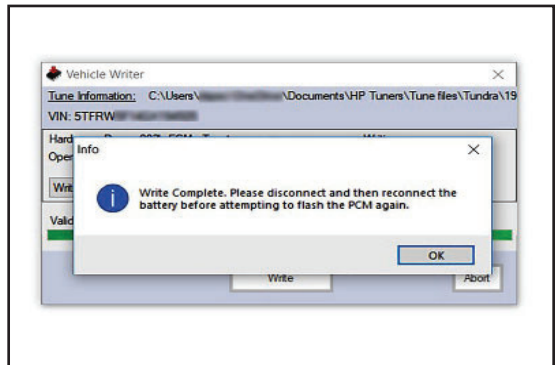
42. The writing process will begin.



43. **Some vehicles will not show this “Info” window. Skip this step if you do not see this information on the screen.** Once again you will be prompted to “Turn the ignition OFF. Wait 10 Seconds. Turn the Ignition ON and click OK.”



44. **Some vehicles will not show this “Info” window. Skip this step if you do not see this information on the screen.** At the end of the download process you will see a “Write Complete” Info window. Select “OK” and exit the RTD Flasher.



45. After closing the RTD Flasher, cycle the key OFF. **Your vehicle is now ready for the installation of the Supercharger System.**



If you have any troubles with this process contact our technical support at support@magnusonsuperchargers.com or call 1-805-642-8833 (Press Option 3).

NOTES

First & Last Name: _____

Shipping Address: _____

Phone Number: _____

Email Address: _____

Vehicle Year, Make, & Model: _____

Order #: _____

If you are opting for a TCM (T87A) Service, please indicate so next to the order number.

HPT Interface Serial # (if applicable): _____

Is your ECM original from the vehicle or an un-flashed/spare ECM?

Un-flashed/spare ECM

Original ECM

HP Tuners' Shipping Address:

HP Tuners, LLC

ATT: Dodge Upgrade Service

INSERT YOUR ORDER NUMBER HERE

700 Eastwood Ln

Buffalo Grove, IL 60089

Notes? Please write them below.

CUT HERE



NOTES

NOTES



MAGNUSON

SUPERCHARGERS

1990 Knoll Drive, Building A
Ventura, CA, 93003
www.magnusonsuperchargers.com
1.805.642.8833