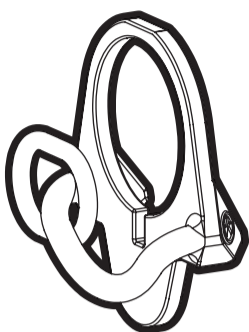


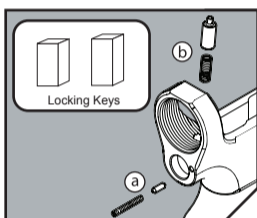


## ASAP<sup>®</sup> Ambidextrous Sling Attachment Point



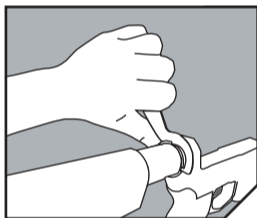
- ⚠ WARNING: BEFORE STARTING, MAKE SURE THE WEAPON IS UNLOADED, THE CHAMBER IS EMPTY, AND THE SAFETY ENGAGED.**
- ⚠ CAUTION: PLEASE READ ALL INSTRUCTIONS BEFORE PROCEEDING. COMPONENTS UNDER SPRING PRESSURE MAY EJECT FORCEFULLY AND COULD CAUSE INJURY.**
- ⚠ WARNING: OBSERVE SAFE FIREARM HANDLING PRACTICES AT ALL TIMES. FAILURE TO DO SO MAY RESULT IN SERIOUS BODILY INJURY OR DEATH. MAGPUL INDUSTRIES SHALL NOT BE RESPONSIBLE FOR INJURY, DEATH OR PROPERTY DAMAGE RESULTING FROM FAULTY INSTALLATION, MISUSE, ILLEGAL USE, OR MODIFICATION OF THIS PRODUCT.**

### ASAP<sup>®</sup> INSTALLATION INSTRUCTIONS



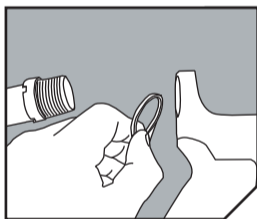
#### CAUTION: SMALL PARTS

Be sure to take care when removing the *receiver extension* and the existing *receiver end plate*. Make sure the *take down pin detent and spring* (a) as well as the *buffer retaining pin and spring* (b) are captured so they are not ejected. Also, be careful not to lose the *Locking Keys* (in package), as they are crucial to proper operation.



#### STEP 1: LOOSEN LOCKING NUT

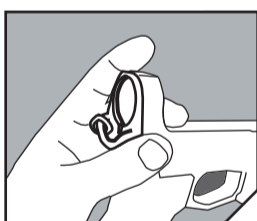
Remove the *upper receiver group, buffer and action spring*. Using an *armorers/spanner wrench*, loosen the *locking nut (castle nut)* on the *receiver extension* and unscrew it as far back as the threads allow.



#### STEP 2 : REMOVE RECEIVER EXTENSION

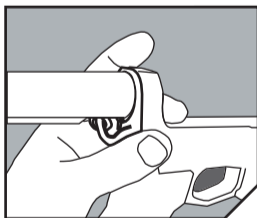
##### AVOID LOSING ANY SMALL COMPONENTS.

Unscrew the *receiver extension and end plate* as a unit from the *lower receiver group*. Remove the existing end plate from *receiver extension tube* and set plate aside.



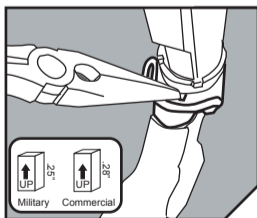
#### STEP 3: MOUNT ASAP PLATE

Make sure the *take down pin detent and spring* (a) are in the *lower receiver*. Use care that the spring does not bind when seating the *ASAP Plate* against the rear of the receiver. Make sure the oval lug on the plate seats into the round receiver hole and hold it in place to retain the *detent and spring*.



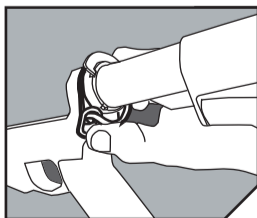
#### STEP 4: MOUNT RECEIVER EXTENSION

Continue to hold the *ASAP Plate* in place. Depress and hold the *buffer retaining pin* (b) while screwing the *receiver extension* into the *lower receiver*.



#### STEP 5: INSTALL LOCKING KEY

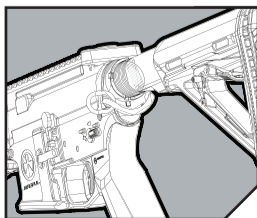
Select correct *Locking Key* for your type of *receiver extension* (Short = Military OR Long = Commercial). Using a pair of *needle nose pliers* install the *Locking Key*, with the long axis in a vertical position, into the *ASAP Plate Keyway* to engage the *receiver extension*. Hand tighten the *locking nut* down to prevent the key from moving.



#### STEP 6: TIGHTEN LOCKING NUT

##### NOTE: DO NOT USE LOCTITE<sup>®</sup> OR OTHER LOCKING COMPOUND ON RECEIVER EXTENSION THREADS.

With the *armorers/spanner wrench*, tighten the *locking nut* down to  $40 \pm 2$  foot lbs. torque per *US Army TM 9-1005-319-23&P Unit and Direct Support Maintenance Manual (3-81.1)*.



#### PERFORM FINAL INSPECTION

Perform final inspection including a function check per *US Army TM 9-1005-319-23&P Unit and Direct Support Maintenance Manual* to verify correct installation.

If you experience any issues during installation, please go online to [www.magpul.com](http://www.magpul.com) for further information.

**Always test fire your weapon before using it in an operational environment.**

LOCTITE<sup>®</sup> is a registered trademark of Henkel Corp.