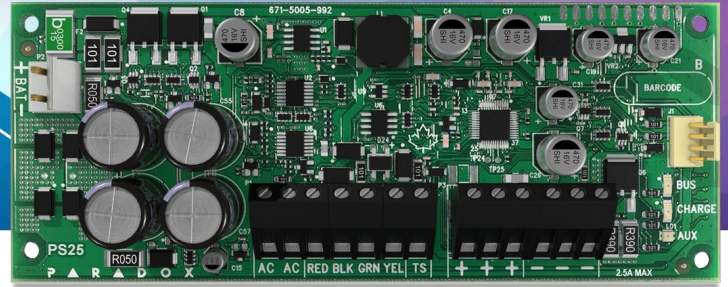


# PS25

## 2.8A Supervised Power Supply



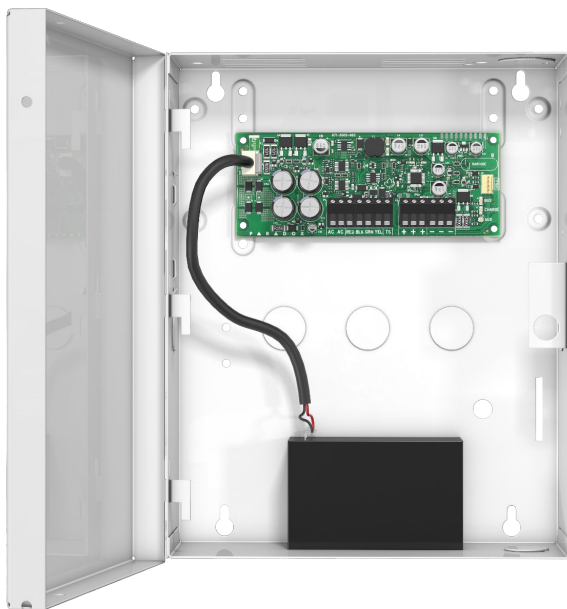
### Description

The PS25 is a 2.8A supervised switching power supply that connects to Paradox control panel bus or may work as a standalone power supply.

The PS25 provides a maximum of 2.5A (13.8 Vdc) continuous auxiliary power output and charge a battery with 300 mA, battery charging current may increase up to 1.2A if Auxiliary current is reduced accordingly.

When connected to a Paradox panel bus, it will provide feedback on AC supply, output voltage, current and warning before disconnect auxiliary output when battery is drained. Troubles can be viewed on BabyWare, reported or sent via push notification. The PS25 will provide AUX power regardless of the panel connection.

It is easy to install via 4-wires directly to the keypad bus.



### Features

- 2.8A supervised power supply
- 2.5A auxiliary power output and up to 1.2A flexible battery
- On-board, auto-sensing anti-tamper switch
- Standalone operation

### Specifications

<b>AC Power</b>	16 Vac, 40 VA, 50-60 Hz
<b>Auxiliary Power</b>	2.5A maximum 13.8 Vdc when AC present 12.8 Vdc or battery 1V when battery supply Disconnect at 9.5V
<b>Battery</b>	12 Vdc, 4 Ah to 14 Ah
<b>Charging</b>	300 mA min to 1200 mA (redirect from auxiliary if less than 2.5A)
<b>Operating Temperature</b>	-20 to 50° C (-4 to 122° F)
<b>Humidity</b>	95% maximum
<b>Bus Supervision</b>	AC, Aux voltage
<b>Dimensions (H x W x D)</b>	5.6 x 14 x 2.5 cm (2.2 x 5.5 x 0.9 in.)
<b>Approvals</b>	CE, EN50131
<b>Compatibility</b>	EVO192, EVOHD all versions, MG5000, MG5050, SP5500, SP6000, SP7000 V6.80 and higher

