

Product Information

COPYRIGHT ©2019 Hangzhou Hikvision Digital Technology Co., Ltd. ALL RIGHTS RESERVED.
Any and all information, including, among others, wordings, pictures, graphs are the properties of Hangzhou Hikvision Digital Technology Co., Ltd. or its subsidiaries (hereinafter referred to be "Hikvision"). This user manual (hereinafter referred to be "the Manual") cannot be reproduced, changed, translated, or distributed, partially or wholly, by any means, without the prior written permission of Hikvision. Unless otherwise stipulated, Hikvision does not make any warranties, guarantees or representations, express or implied, regarding to the Manual.
About this Manual
This Manual is applicable to Wireless Card Reader.
The Manual includes instructions for using and managing the product. Pictures, charts, images and all other information hereinafter are for description and explanation only. The information contained in the Manual is subject to change, without notice, due to firmware updates or other reasons. Please find the latest version in the company website (<http://overseas.hikvision.com/en/>).
Please use this user manual under the guidance of professionals.

HIKVISION Trademarks Acknowledgement and other Hikvision's trademarks and logos are the properties of Hikvision in various jurisdictions. Other trademarks and logos mentioned below are the properties of their respective owners.

Legal Disclaimer
TO THE MAXIMUM EXTENT PERMITTED BY APPLICABLE LAW, THE PRODUCT DESCRIBED, WITH ITS HARDWARE, SOFTWARE AND FIRMWARE, IS PROVIDED "AS IS", WITH ALL FAULTS AND ERRORS, AND HIKVISION MAKES NO WARRANTIES, EXPRESS OR IMPLIED, INCLUDING WITHOUT LIMITATION, MERCHANTABILITY, SATISFACTORY QUALITY, FITNESS FOR A PARTICULAR PURPOSE, AND NON-INFRINGEMENT OF THIRD PARTY. IN NO EVENT WILL HIKVISION, ITS DIRECTORS, OFFICERS, EMPLOYEES, OR AGENTS BE LIABLE TO YOU FOR ANY SPECIAL, CONSEQUENTIAL, INCIDENTAL, OR INDIRECT DAMAGES, INCLUDING, AMONG OTHERS, DAMAGES FOR LOSS OF BUSINESS PROFITS, BUSINESS INTERRUPTION, OR LOSS OF DATA OR DOCUMENTATION, IN CONNECTION WITH THE USE OF THIS PRODUCT, EVEN IF HIKVISION HAS BEEN ADVISED OF THE POSSIBILITY OF SUCH DAMAGES. REGARDING TO THE PRODUCT WITH INTERNET ACCESS, THE USE OF PRODUCT SHALL BE WHOLLY AT YOUR OWN RISKS. HIKVISION SHALL NOT TAKE ANY RESPONSIBILITIES FOR ABNORMAL OPERATION, PRIVACY LEAKAGE OR OTHER DAMAGES RESULTING FROM CYBER ATTACK, HACKER ATTACK, VIRUS INSPECTION, OR OTHER INTERNET SECURITY RISKS; HOWEVER, HIKVISION WILL PROVIDE TIMELY TECHNICAL SUPPORT IF REQUIRED. SURVEILLANCE LAWS VARY BY JURISDICTION. PLEASE CHECK ALL RELEVANT LAWS IN YOUR JURISDICTION BEFORE USING THIS PRODUCT IN ORDER TO ENSURE THAT YOUR USE CONFORMS THE APPLICABLE LAW. HIKVISION SHALL NOT BE LIABLE IN THE EVENT THAT THIS PRODUCT IS USED WITH ILLEGITIMATE PURPOSES.
IN THE EVENT OF ANY CONFLICTS BETWEEN THIS MANUAL AND THE APPLICABLE LAW, THE LATER PREVAILS.



This product and - if applicable - the supplied accessories too are marked with "CE" and comply therefore with the applicable harmonized European standards listed under the RE Directive 2014/53/EU, the EMC Directive 2014/30/EU, the LVD Directive 2014/35/EU, the RoHS Directive 2011/65/EU.



2012/19/EU (WEEE directive): Products marked with this symbol cannot be disposed of as unsorted municipal waste in the European Union. For proper recycling, return this product to your local supplier upon the purchase of equivalent new equipment, or dispose of it at designated collection points. For more information see: www.recyclethis.info



2006/66/EC (battery directive): This product contains a battery that cannot be disposed of as unsorted municipal waste in the European Union. See the product documentation for specific battery information. The battery is marked with this symbol, which may include lettering to indicate cadmium (Cd), lead (Pb), or mercury (Hg). For proper recycling, return the battery to your supplier or to a designated collection point. For more information see: www.recyclethis.info

EN50131-4:2009
EN50131-5-3:2017
EN50131-6:2017
Security Grade 2
Environmental Class II



FCC information
Please take attention that changes or modification not expressly approved by the party responsible for compliance could void the user's authority to operate the equipment.
FCC compliance: This equipment has been tested and found to comply with the limits for a Class B digital device, pursuant to part 15 of the FCC Rules. These limits are designed to provide reasonable protection against harmful interference in a residential installation. This equipment generates, uses and can radiate radio frequency energy and, if not installed and used in accordance with the instructions, may cause harmful interference to radio communications. However, there is no guarantee that interference will not occur in a particular installation. If this equipment does cause harmful interference to radio or television reception, which can be determined by turning the equipment off and on, the user is encouraged to try to correct the interference by one or more of the following measures:
—Reorient or relocate the receiving antenna.
—Increase the separation between the equipment and receiver.
—Connect the equipment into an outlet on a circuit different from that to which the receiver is connected.
—Consult the dealer or an experienced radio/TV technician for help.
This equipment should be installed and operated with a minimum distance 20cm between the radiator and your body.
FCC Conditions
This device complies with part 15 of the FCC Rules. Operation is subject to the following two conditions:
1. This device may not cause harmful interference.
2. This device must accept any interference received, including interference that may cause undesired operation

Diagram Reference

1 Appearance

- ① Water-Proof Transparency Cover
- ② Buzzer
- ③ Gradienter
- ④ Indicator
- ⑤ Power Terminal
- ⑥ Battery Connector
- ⑦ Registration Key
- ⑧ TAMPER
- ⑨ Strobe Light

TAMPER

Tampering Alarm: If the siren is disassembled, an alarm will be triggered.

Indicator

● Operation:

- Armed: Blue LED flashes once.
- Disarmed: Blue LED flashes twice.
- Formatted: Red LED flashes 3 times, interval:200 ms.
- Enrolled: Green LED flashes 8 times, interval:200 ms.

● Display Signal Strength:

Enter the signal strength checking mode, and then hold the registration key for 1 to 2 s:
Solid Green for 3 s - Strong Signal
Solid Red for 3 s - Weak Signal

Buzzer

- Zone Alarm: Rapid high frequency impulsive sound.
 - Panic Alarm: High and low frequency alternated impulsive sound.
 - Fire Alarm: Fire bell.
 - Armed: One beep.
 - Disarmed: Two beeps (1s gap).
- Note:** You can sign in web client "Device Management - Siren - Settings" or the mobile client "Wireless Device" to adjust the volume of buzzer.

2 Power On

1. Loosen the set screw at the bottom of the siren and remove the front panel.
- Note:** You can hang the front panel on the buckle.
2. Open the water-proof cover.
3. Power the siren on.

Mode A: Control Panel Siren Input

- a. Plug the jumper cap to pin1 and pin2(mode A).
- b. Push the Cable Knock-Out away.
- c. Connect to the control panel siren terminal.

Mode B: Battery or 12 VDC Input

- a. Plug the jumper cap to pin2 and pin3(mode B).
 - b. Install four CR123A batteries according to the polarity mark.
- Note:** Do not reverse the polarity of the battery.

12 VDC Power

- a. Plug the jumper cap to pin2 and pin3(mode B).
- b. Push the Cable Knock-Out away.
- c. Wire the power cable.

4. Close the water-proof cover.

3 Enrollment

Enroll the Siren Locally

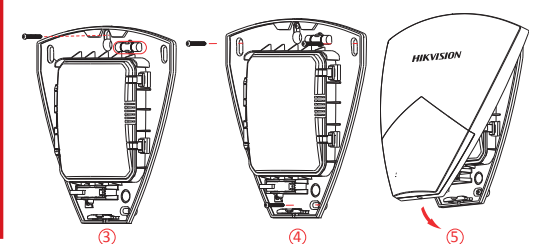
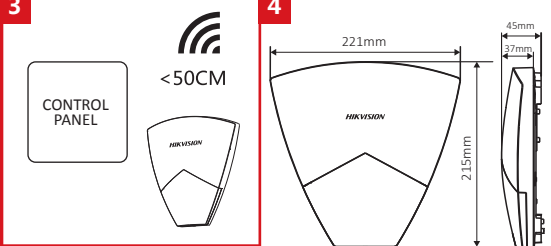
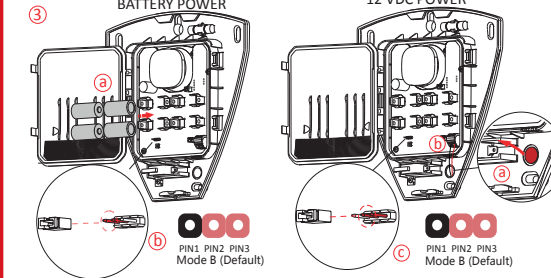
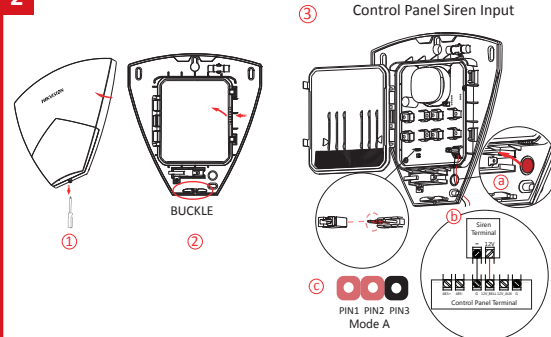
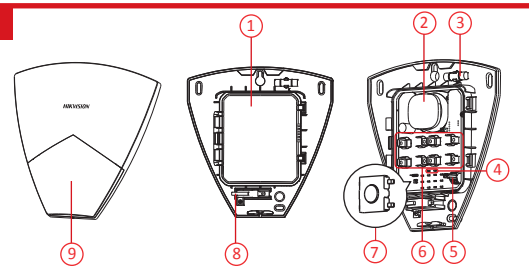
Power on the security control panel. Press the function button once and then press the registration key. Add the siren according to the voice prompt. The green LED of the siren will flash 8 times after being successfully enrolled.
Note: The distance between the security control panel and the siren should be less than 50 cm.

4 Installation

1. Check Signal Strength
Enter the signal checking mode, and then hold the registration key for 1 to 2 s.
Solid Green for 3 s - Strong Signal (appropriate for installation)
Solid Red for 3 s - Weak Signal
Off-No Signal
2. Loosen the set screw at the bottom of the siren and remove the front panel.
Note: You can hang the front panel on the buckle.
3. Attach the siren to the required place with the top screw. Make the siren horizontal by resorting to the gradienter.
4. Secure the siren with other three screws.
5. Fix the front panel on the siren body. Tighten the set screw to complete the installation.

Specification

Product	Wireless Siren	
RF	RF frequency	433/868 MHz
	RF modulation	2FSK
	RF speed	10kbps/4.8kbps
	RF power	10dBm
	RF method	Two-way communication
	RF encryption	AES-128
	RF distance	800 m (open area)
Indicator	LED	Blue (on front panel) , Red/Green (on PCB)
Power	Power supply	4 CR123A Batteries (default) or 12V DC
	Battery life span	5 years in stand-by status
Interface	Registration key	1
	TAMPER switch	1
Buzzer	Decibel	110dB
	Operation	-25°C to +60°C (-13°F to 140°F)
General	Operation humidity	10% to 90% (no condensing)
	Color	White and blue
	Material	PC+ABS
	Dimension [W x H x D]	221mm x 215mm x 45mm(8.7" x 8.5" x 1.8")
	Protection level	IP65
Installation	Wall mounting	



Références du schéma

Referências do diagrama

Italiano

Riferimenti agli schemi

Español

Diagrama de referencia

Русский

Пояснения к схемам

Deutsch

Schaubild

Polski

Opis diagramu