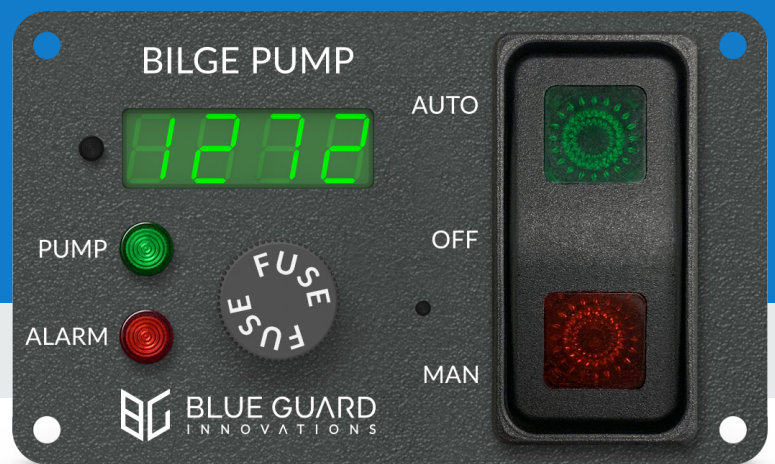


# BG-CP-A

## Advanced Control Panel

SPEC SHEET



## OVERVIEW

The BG-CP-A (Advanced Control Panel) is an important and compact way to display and monitor bilge pump functions at the bridge of the vessel. All the essential functions of a bilge pump system are at the crew's finger tips. The control panel has one alarm detection LED with an accompanying 83 dB sound output audio alarm. The alarm can be used as a high water alarm, oil detection alarm, or any other available alarm on the vessel (e.g. fire).

The BG-CP-A includes a dedicated pump LED, an easy to read 4-digit display with a reset button, and a fuse holder located on the front panel. The illuminated three position pump switch has OFF, Auto, and momentary Manual override functions. The display shows the bilge pump count, run time, input voltage, and output current. The control panel also features three different brightness settings for the display and on-board memory to store the pump count in the event of a power outage to the panel.

## FEATURES

### Green LED

Pump running

### Red LED

Alarm (e.g. high water, oil, fire)

### Four Digit Display

Pump counter, voltage, current, pump run time

### Reset Button (Pump Counter, Pump Run Time, Voltage, Current)

Reset – Press and hold for 3 seconds to reset counter

Cycle Display Information – Press 1 time to cycle through the last pump run time in minutes and seconds, voltage, and current

Adjust Display Brightness – Press and hold button while the display is showing voltage to adjust the brightness of the display and release on desired brightness

### Bilge Pump Switch

Green Light ON – Pump in auto mode

OFF – Pump off, panel off

Manual Momentary Switch – Press to turn on, release to turn off

### Voltage Compatibility

12, 24, or 32 Vdc

### Operations

Up to 20 amps

### Alarm Buzzer

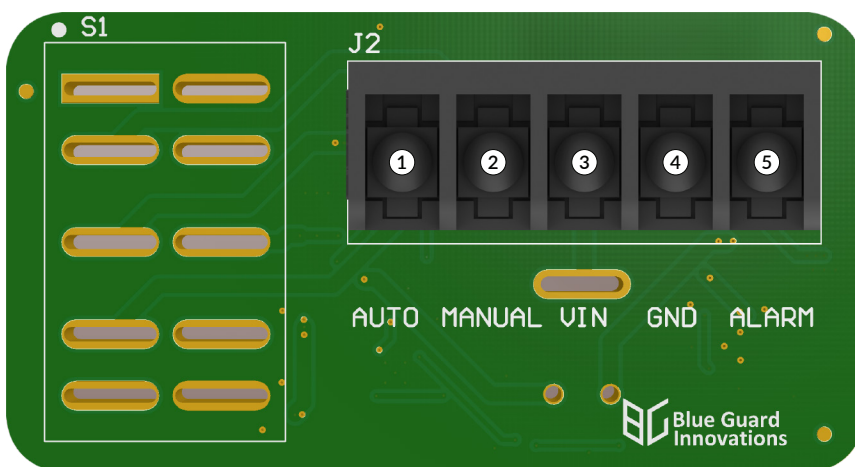
83 dB

### Dimensions

(W x H x D) – 3.5 in x 2.1 in x 2.4 in



## REAR ELECTRICAL BOARD



- ① **AUTO**  
Pump Auto Control
- ② **MANUAL**  
Pump Manual Control
- ③ **VIN**  
12, 24, or 32 Vdc Power
- ④ **GND**  
Supply Negative
- ⑤ **ALARM**  
Alarm