

# REPLACING THE DRUM UNIT

## DR720



### Drum unit

A new drum unit can print approximately 30,000 A4 or Letter size single-sided pages at 5 % coverage.

#### Note

• There are many factors that determine the actual drum life, such as the temperature, humidity, type of paper, type of toner used, number of pages per print job and so on. Under ideal conditions, the average drum life is estimated at approximately 30,000 pages. The actual number of pages that your drum will print may be significantly less than this estimate. Because we have no control over the many factors that determine the actual drum life, we cannot guarantee a minimum number of pages that will be printed by your drum.

#### CHANGE DRUM MESSAGE

If the DRUM light indicator is blinking, it means the drum unit is near the end of its life. We recommend that you replace the drum unit with a new one before there is a noticeable deterioration in the print quality.

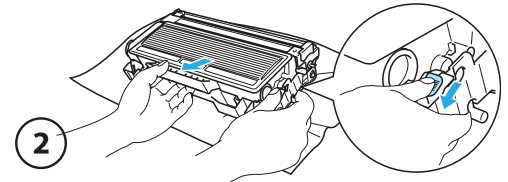
#### CAUTION!

• Every time you replace the drum unit, clean the inside of the printer. See CLEANING on section of your user guide.

#### IMPROPER SETUP

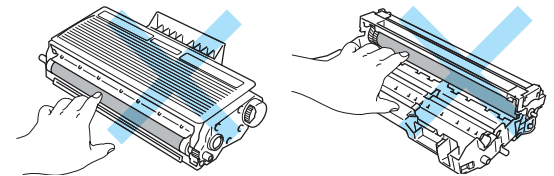
Do not reset the drum counter when you only replace the toner cartridge.

- 1- Take out the drum unit and toner cartridge assembly.
- 2- Push down the blue lock lever and take the toner cartridge out of the drum unit.



#### CAUTION!

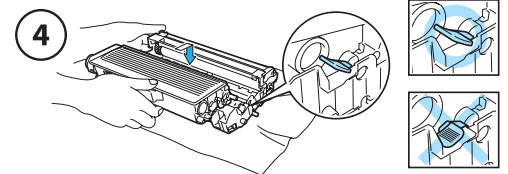
- Handle the toner cartridge carefully. If toner scatters on your hands or clothes, shake it off (do not wipe off) and wash your hands in cold water.
  - To avoid print quality problems, DO NOT touch the shaded parts as shown on the illustrations on your right
- 3- Unpack the new drum unit.



#### CAUTION!

• Wait to unpack a drum unit until immediately before you put it in the printer. Exposure to direct sunlight or room light may damage the drum unit.

4- Put the toner cartridge firmly into the new drum unit until you hear it lock into place. If you put the cartridge in properly, the blue lock lever will lift automatically. Clean the corona wire in the drum unit.



#### CAUTION!

• Make sure that you put in the toner cartridge properly, or it may separate from the drum unit.

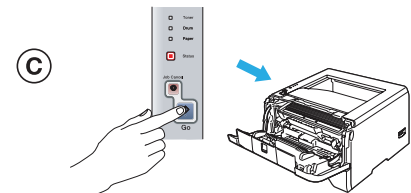
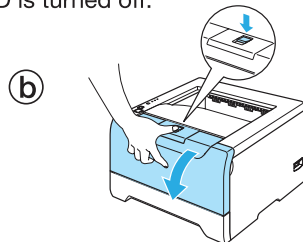
5- Put the drum unit and toner cartridge assembly back in the printer.

#### RESET THE DRUM COUNTER

6- When you replace the drum unit with a new one, you need to reset the drum counter by completing the following steps:

##### PRINTER VERSION:

a) Do not close the front cover. b) Make sure that the printer is turned on and the **Drum** LED is blinking. Press the front cover release button and then open the front cover. c) Press and hold down **Go** for about 4 seconds until all the LEDs light up. Once all six LEDs are lit, release **Go**. Please verify that the **Drum** LED is turned off.



##### MULTIFUNCTION VERSION:

- a) Do not close the front cover.
- b) Put the drum unit and toner cartridge assembly back in the machine.
- c) Press **Clear**.

\* To confirm you are installing a new drum, press 1. Yes

7- When the LCD shows **Accepted**, close the front cover.

