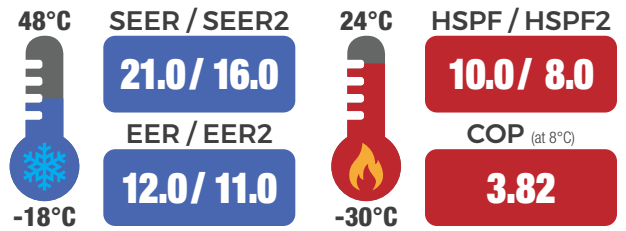




# MULTI-ZONE SYSTEM FREE MATCH



## FLEXIBILITY TO MEET YOUR COMFORT NEEDS

Enjoy efficient whole-house comfort with highly versatile multi-zone systems that can meet the comfort needs of everyone and every room in your home. **GREE's Free Match** series provides both cooling and heating in as many as five distinct zones independently.

### A RELIABLE AND STURDY CONSTRUCTION

All **Free Match** units are constructed of heavy gauge rolled steel and finished with a heavy duty powder coat. The acrylic anti-corrosion coating on the coils provides added protection in corrosive environments, while improving hydrophilic properties and efficiency.



### FEATURES AND BENEFITS:

INCLUDED FUNCTION |  OPTIONAL FUNCTION

- |                 |                          |                      |                        |                      |            |                |                      |                    |                      |              |
|-----------------|--------------------------|----------------------|------------------------|----------------------|------------|----------------|----------------------|--------------------|----------------------|--------------|
| HIGH EFFICIENCY | COMPREHENSIVE PROTECTION | INNER COPPER GROOVES | INTELLIGENT DEFROSTING | EASY MAINTAINABILITY | TURBO MODE | SELF-DIAGNOSIS | LOW VOLTAGE START-UP | WIDE VOLTAGE RANGE | WIDE OPERATING RANGE | AUTO RESTART |
| CONTROL LOCK    | TIMER                    | WEEKLY TIMER         | WIRED CONTROLLER       |                      |            |                |                      |                    |                      |              |

- G10 Inverter technology
- Can power up to 5 indoor units
- Low voltage start-up
- Fins with anti-corrosion coating

- Self-diagnosis function
- Automatic defrost function
- Heavy gauge steel cabinet
- Eco-friendly R410A refrigerant



18K, 24K & 30K BTU/hr condensing units



36K & 42K BTU/hr condensing units

CONDENSING UNIT			GWHD(18)ND3MO	GWHD(24)ND3MO	GWHD(30)ND3MO	GWHD(36)ND3MO	GWHD(42)ND3MO
AHRI Code (without / with duct):			208786089 / 208786092	208786090 / 208786093	208786091 / 208786094	208786087 / 208786095	208786088 / 208786096
Connectable Indoor Units	—		2	2 to 3	2 to 4	2 to 4	2 to 5
Power Supply	V/Hz/Ph		208-230 / 60 / 1				
SYSTEM PERFORMANCE							
Capacity	Cooling	BTU/hr	17000 (7000 – 19600)	23200 (7500 – 31400)	28400 (8190 – 34100)	34000 (8871 – 35826)	36000 (8871 – 40944)
	Heating	BTU/hr	18000 (7000 – 19600)	24000 (7500 – 31400)	30000 (8190 – 40900)	36000 (8871 – 44356)	40000 (8871 – 46062)
Power Input	Cooling	W	1420	1860	2270	2830	3000
	Heating	W	1380	1800	2250	2960	3020
SEER / SEER 2 (without / with duct)	BTU/W*hr		SEER: 21.0 / 16.0 SEER 2: 21.0 / 16.0	SEER: 21.0 / 16.0 SEER 2: 21.0 / 16.0	SEER: 21.0 / 16.0 SEER 2: 21.0 / 16.0	SEER: 21.0 / 16.0 SEER 2: 21.0 / 16.0	SEER: 21.0 / 16.0 SEER 2: 21.0 / 16.0
EER / EER 2 (without / with duct)	BTU/W*hr		EER: 12.0 / 11.0 EER 2: 12.0 / 11.0	EER: 12.5 / 11.0 EER 2: 12.5 / 11.0	EER: 12.5 / 11.0 EER 2: 12.5 / 11.0	EER: 12.0 / 11.0 EER 2: 12.0 / 11.0	EER: 12.0 / 11.0 EER 2: 12.0 / 11.0
HSPF / HSPF 2 (without / with duct)	BTU/W*hr		HSPF: 10.0 / 8.5 HSPF 2: 10.0 / 8.0	HSPF: 10.0 / 8.5 HSPF 2: 10.0 / 8.0	HSPF: 10.0 / 8.5 HSPF 2: 10.0 / 8.0	HSPF: 10.0 / 8.5 HSPF 2: 10.0 / 8.0	HSPF: 10.0 / 8.5 HSPF 2: 10.0 / 8.0
COP (without / with duct)	W/W		3.82 / 3.3	3.91 / 3.4	3.91 / 3.4	3.56 / 3.3	3.88 / 3.5
Energy Star® (without / with duct)	—		YES / NO	YES / NO	YES / NO	YES / NO	NO / NO
OUTDOOR UNIT SPECIFICATIONS							
Ambient Temperature	Cooling	°C (°F)	-18 to 48 (0 to 118)				
	Heating	°C (°F)	-30 to 24 (-22 to 75)				
Airflow Volume	m³/hr (CFM)		2300 (1354)	3800 (2236)	5800 (3413)	5800 (3413)	5800 (3413)
Sound Pressure Level	dB(A)		54	58	63	63	63
Minimum Circuit Ampacity (MCA)	A		15	19	23	29	29
Maximum Overcurrent Protection (MOP)	A		20	25	35	45	45
Dimensions	Width	mm (in)	822 (32-3/8)	964 (37-31/32)	1020 (40-5/32)	1020 (40-5/32)	1020 (40-5/32)
	Height	mm (in)	550 (21-21/32)	660 (26)	826 (32-1/2)	826 (32-1/2)	826 (32-1/2)
	Depth	mm (in)	352 (13-27/32)	402 (15-13/16)	427 (16-13/16)	427 (16-13/16)	427 (16-13/16)
Weight	Net	kg (lb)	35.0 (77.2)	52.0 (114.7)	69.0 (152.1)	78.0 (172.0)	79.0 (174.2)
	Gross	kg (lb)	37.5 (82.7)	56.5 (124.6)	76.0 (167.6)	85.0 (187.4)	86.0 (189.6)
REFRIGERATION SYSTEM							
Suction Line Size	mm (in)		ø 9.52 (3/8)	ø 9.52 (3/8)	ø 9.52 (3/8)	ø 9.52 (3/8)	ø 9.52 (3/8)
Liquid Line Size	mm (in)		ø 6.35 (1/4)	ø 6.35 (1/4)	ø 6.35 (1/4)	ø 6.35 (1/4)	ø 6.35 (1/4)
Maximum pipe length	m (ft)		20 (65.6)	20 (65.6)	25 (82.0)	25 (82.0)	25 (82.0)
Maximum total pipe length	m (ft)		40 (131.2)	60 (196.8)	80 (262.5)	80 (262.5)	100 (328.1)
Maximum elevation between IDUs	m (ft)		15 (49.2)	15 (49.2)	25 (82.0)	25 (82.0)	25 (82.0)
Maximum elevation between ODU and IDU	m (ft)		15 (49.2)	15 (49.2)	25 (82.0)	25 (82.0)	25 (82.0)
Refrigerant Type / Charge	kg (oz)		R410A / 1.3 (45.9)	R410A / 2.4 (84.7)	R410A / 3.0 (105.8)	R410A / 3.7 (130.5)	R410A / 3.8 (134.0)

“ONE-THIRD OF THE WORLD’S AIR CONDITIONERS ARE GREE-MADE.”



## INDOOR UNITS

**GREE** introduces layout flexibility by simultaneously powering up to five indoor units with one outdoor unit. For even greater flexibility, match your indoor units from our selection of wall-mounted units, mini floor consoles, slim ducts and ceiling cassettes to create your custom **Free Match** heating and cooling system.



### WALL-MOUNTED UNIT

The **VITA** Series ductless wall-mounted unit has a compact design that blends well with any décor, the perfect option for your home or office needs.



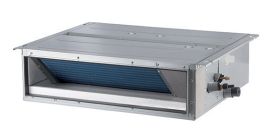
### MINI FLOOR CONSOLE

The mini-console is aesthetically pleasing and the perfect size for any room. It can be installed 15 cm (6 inches) off the floor and its front panel allows access to the filter for easy cleaning.



### CEILING CASSETTE

The ceiling cassette offers discreet performance through an innovative design. It is suitable for any room and can be easily installed in ceilings, leaving only a decorative grille visible.



### SLIM DUCT

The slim duct (high or low static) offers an extremely discreet and compact solution. In addition, this indoor unit frees up a maximum amount of space to minimize the impact on decor.



Remote control  
YAN1F10F (included)



Wired controller  
XE-71 (in option)



Remote control  
YT1FF (included)



Remote control  
YT1FF (included)



Wired controller  
XE-71 (in option)



Wired controller  
XE-71 (in option)

- Multiple fan speed
- Swing louver control
- Turbo mode
- Control lock
- Dry coil mode for anti-mildew protection
- Recovery after a power failure
- Washable dust filters

- 4-way discharge air
- Multiple fan speed
- Swing louver control
- Comfortable Sleep mode
- Dry coil mode for anti-mildew protection
- Washable dust filters

- Decorative grille (included)
- 4-way discharge air
- Multiple fan speed
- Control lock
- Swing louver control
- Recovery after a power failure
- Internal condensate drain pump
- Sentry float switch
- Washable dust filters

- Low static pressure capability (for low static ducts)
- High static pressure capability (for high static ducts)
- Alternate return air from bottom or rear
- Internal condensate drain pump
- Sentry float switch
- Slim line construction (7-7/8" high)

VITA WALL-MOUNTED UNIT			GWH05ATA-D3DNA3A/I	GWH07ATA-D3DNA3A/I	GWH09ATCXB-D3DNA3A/I	GWH12ATCXB-D3DNA3C/I	GWH18ATDXD-D3DNA3A/I	GWH24ATEXF-D3DNA3E/I
Power Supply	V/Hz/Ph	208-230 / 60 / 1 (powered by the outdoor unit)						
Capacity	Cooling	BTU/hr	5000	7000	9100	12000	176000	22000
	Heating	BTU/hr	6000	8000	10000	12000	19100	24000
Energy Star®	—	NO						
Moisture Removal Capacity	L/hr (pt/hr)	0.30 (0.63)		0.60 (1.27)	0.80 (1.69)	1.40 (2.96)	1.80 (3.80)	2.50 (5.28)
Airflow Volume	m³/hr (CFM)	420/330/310/290/270/250/210 (247/194/182/171/159/147/124)		440/400/380/350/310/270/230 (259/235/224/206/182/159/135)	600/480/450/390/360/330/270 (353/282/265/230/212/194/159)	720/600/550/470/420/380/310 (424/353/324/277/247/224/182)	1050/870/800/740/670/570/480 (618/512/471/436/395/336/283)	1150/1000/950/850/800/750/700 (677/588/559/500/471/441/412)
Sound Pressure Level	dB(A)	38/33/31/29/28/26/24		39/36/35/33/30/27/24	41/37/34/32/31/28/26	47/39/38/35/33/32/27	50/46/44/42/40/36/32	51/47/45/42/40/38/36
Dimensions	Width	mm (in)	708 (27-7/8)		835 (32-7/8)	835 (32-7/8)	943 (37-1/8)	1078 (42-7/16)
	Height	mm (in)	260 (10-15/64)		275 (10-53/64)	275 (10-53/64)	333 (13-7/64)	333 (13-7/64)
	Depth	mm (in)	185 (7-9/32)		200 (7-7/8)	200 (7-7/8)	246 (9-11/16)	246 (9-11/16)
Weight	Net	kg (lb)	7.0 (15.4)		9.0 (19.8)	9.0 (19.8)	13.0 (28.7)	15.0 (33.1)
	Gross	kg (lb)	8.5 (18.7)		11.0 (24.3)	11.0 (24.3)	15.5 (34.2)	18.0 (39.7)

MINI FLOOR CONSOLE			GEH(09)AA-D3DNA1C/I	GEH(12)AA-D3DNA1C/I	GEH(18)AA-D3DNA1C/I
Power Supply	V/Hz/Ph	208-230 / 60 / 1 (powered by the outdoor unit)			
Capacity	Cooling	BTU/hr	8873	11946	18089
	Heating	BTU/hr	9556	12969	19795
Energy Star®	—	YES			
Moisture Removal Capacity	L/hr (pt/hr)	0.80 (1.69)		1.40 (2.96)	1.80 (3.80)
Airflow Volume	m³/hr (CFM)	500 / 430 / 410 / 330 / 280 / 230 (294 / 253 / 241 / 194 / 165 / 147)		600 / 520 / 481 / 400 / 360 / 280 (353 / 306 / 283 / 235 / 212 / 165)	650 / 620 / 550 / 410 / 320 (383 / 365 / 324 / 265 / 241 / 188)
Sound Pressure Level	dB(A)	40 / 38 / 36 / 33 / 30 / 27 / 25		42 / 40 / 38 / 37 / 35 / 32 / 27	48 / 46 / 44 / 41 / 37 / 35 / 32
Dimensions	Width	mm (in)	700 (27-9/16)		700 (27-9/16)
	Height	mm (in)	600 (23-5/8)		600 (23-5/8)
	Depth	mm (in)	215 (8-1/2)		215 (8-1/2)
Weight	Net	kg (lb)	15 (33)		15 (33)
	Gross	kg (lb)	18 (40)		18 (40)

CEILING CASSETTE			GKH(12)BB-D3DNA3A/I		GKH(18)BB-D3DNA3A/I		GKH(24)BC-D3DNA4A/I	
Power Supply	V/Hz/Ph		208-230 / 60 / 1 (powered by the outdoor unit)					
Capacity	Cooling	BTU/hr	12000		14400		22800	
	Heating	BTU/hr	13000		16000		27400	
Energy Star®	—		YES		YES		YES	
Moisture Removal Capacity	L/hr (pt/hr)		1.40 (2.96)		1.80 (3.80)		2.50 (5.28)	
Airflow Volume	m³/hr (CFM)		560 / 520 / 450 (330 / 306 / 265)		670 / 590 / 450 (394 / 347 / 265)		1220 / 1100 / 880 (718 / 647 / 518)	
Sound Pressure Level	dB(A)		44 / 41 / 38 / 34		47 / 45 / 41 / 35		47 / 45 / 41 / 36	
Dimensions	Width	mm (in)	595 (23-1/2)		595 (23-1/2)		840 (33-1/16)	
	Height	mm (in)	595 (23-1/2)		595 (23-1/2)		840 (33-1/16)	
	Depth	mm (in)	241 (9-1/2)		241 (9-1/2)		241 (9-1/2)	
Weight	Net	kg (lb)	20.0 (44.1)		20.0 (44.1)		26.0 (57.3)	
	Gross	kg (lb)	24.0 (52.9)		24.0 (52.9)		32.0 (70.6)	
DECORATIVE GRILLE SPECIFICATIONS			TF05		TF05		TF06	
Dimensions	Width	mm (in)	620 (24-13/32)		620 (24-13/32)		950 (37-13/32)	
	Height	mm (in)	620 (24-13/32)		620 (24-13/32)		950 (37-13/32)	
	Depth	mm (in)	47.5 (1-7/8)		47.5 (1-7/8)		52 (2-3/64)	
Weight	Net	kg (lb)	3.0 (6.6)		3.0 (6.6)		6.0 (13.2)	
	Gross	kg (lb)	4.0 (9.9)		4.0 (9.9)		9.5 (20.9)	

LOW STATIC SLIM DUCT			GFH(09)EA-D3DNA1A/I		GFH(12)EA-D3DNA1A/I		GFH(18)EA-D3DNA1A/I		GFH(21)EA-D3DNA1A/I		GFH(24)EA-D3DNA1A/I	
Power Supply	V/Hz/Ph		208-230 / 60 / 1 (powered by the outdoor unit)									
Capacity	Cooling	BTU/hr	8533		11946		15359		20478		24232	
	Heating	BTU/hr	9556		13140		18772		22526		27304	
Energy Star®	—		NO		NO		NO		NO		NO	
Moisture Removal Capacity	L/hr (pt/hr)		0.80 (1.69)		1.40 (2.96)		1.80 (3.80)		2.50 (5.28)		2.50 (5.28)	
Airflow Volume	m³/hr (CFM)		450 / 300 / 250 (265 / 177 / 147)		500 / 400 / 300 (294 / 235 / 177)		700 / 600 / 500 (412 / 353 / 294)		1000 / 750 / 550 (589 / 441 / 324)		1000 / 750 / 550 (589 / 441 / 324)	
Sound Pressure Level	dB(A)		37 / 34 / 31		39 / 35 / 32		41 / 37 / 33		42 / 38 / 34		42 / 38 / 34	
Rated External Static Pressure	Pa (in.w.g)		10 (0.04)		10 (0.04)		10 (0.04)		15 (0.06)		15 (0.06)	
Dimensions	Width	mm (in)	700 (27-3/4)		700 (27-3/4)		900 (35-3/8)		1100 (43-3/8)		1100 (43-3/8)	
	Height	mm (in)	615 (24-1/4)		615 (24-1/4)		615 (24-1/4)		615 (24-1/4)		615 (24-1/4)	
	Depth	mm (in)	200 (7-7/8)		200 (7-7/8)		200 (7-7/8)		200 (7-7/8)		200 (7-7/8)	
Weight	Net	kg (lb)	22 (48.5)		23 (50.7)		27 (59.5)		31 (68.3)		31 (68.3)	
	Gross	kg (lb)	27 (59.5)		29 (63.9)		36 (79.4)		41 (90.4)		41 (90.4)	

HIGH STATIC SLIM DUCT			GFH(09)DA-D3DNA1A/I		GFH(12)DA-D3DNA1A/I		GFH(18)DB-D3DNA1A/I		GFH(24)DB-D3DNA1A/I			
Power Supply	V/Hz/Ph		208-230 / 60 / 1 (powered by the outdoor unit)									
Capacity	Cooling	BTU/hr	9000		12000		18000		24000		24000	
	Heating	BTU/hr	9500		13000		19000		27000		27000	
Energy Star®	—		NO		NO		NO		NO		NO	
Moisture Removal Capacity	L/hr (pt/hr)		0.80 (1.69)		1.40 (2.96)		1.80 (3.80)		2.50 (5.28)		2.50 (5.28)	
Airflow Volume	m³/hr (CFM)		550 / 430 / 360 / 320 (324 / 253 / 212 / 188)		600 / 490 / 420 / 360 (353 / 288 / 247 / 211)		1000 / 700 / 530 / 490 (588 / 412 / 312 / 288)		1250 / 950 / 770 / 690 (735 / 559 / 453 / 406)		1250 / 950 / 770 / 690 (735 / 559 / 453 / 406)	
Sound Pressure Level	dB(A)		36 / 30 / 27 / 25		38 / 35 / 30 / 26		39 / 33 / 29 / 26		42 / 36 / 32 / 28		42 / 36 / 32 / 28	
Rated External Static Pressure	Pa (in.w.g)		60 (0.24)		60 (0.24)		90 (0.36)		90 (0.36)		90 (0.36)	
Dimensions	Width	mm (in)	830 (32-43/64)		830 (32-43/64)		1130 (44-31/64)		1130 (44-31/64)		1130 (44-31/64)	
	Height	mm (in)	754 (29-11/16)		754 (29-11/16)		754 (29-11/16)		754 (29-11/16)		754 (29-11/16)	
	Depth	mm (in)	300 (11-13/16)		300 (11-13/16)		300 (11-13/16)		300 (11-13/16)		300 (11-13/16)	
Weight	Net	kg (lb)	32 (70.6)		32 (70.6)		42 (92.6)		42 (92.6)		42 (92.6)	
	Gross	kg (lb)	38 (83.8)		38 (83.8)		48.5 (106.9)		48.5 (106.9)		48.5 (106.9)	

Affordable comfort you can trust from the world's largest manufacturer of air conditioners.



GREE Canada products are subject to continuous improvements. GREE Canada reserves the right to modify product design, specifications and information without notice and without incurring obligations.

Authorized dealer