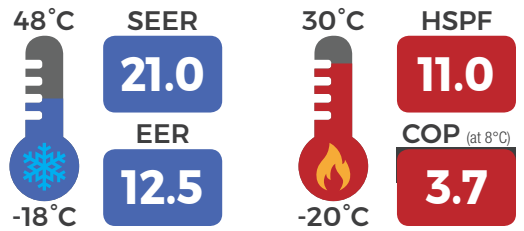




# MULTI-ZONE SYSTEM FREE MATCH



## FLEXIBILITY TO MEET YOUR COMFORT NEEDS

Enjoy efficient whole-house comfort with highly versatile multi-zone systems that can meet the comfort needs of everyone and every room in your home. **GREE's Free Match** series provides both cooling and heating in as many as five distinct zones independently.

### A RELIABLE AND STURDY CONSTRUCTION

All **Free Match** units are constructed of heavy gauge rolled steel and finished with a heavy duty powder coat. The acrylic anti-corrosion coating on the coils provides added protection in corrosive environments, while improving hydrophilic properties and efficiency.



### FEATURES AND BENEFITS:

HIGH EFFICIENCY	COMPREHENSIVE PROTECTION	INNER COPPER GROOVES	INTELLIGENT DEFROSTING	EASY MAINTAINABILITY	TURBO MODE	SELF-DIAGNOSIS	LOW VOLTAGE START-UP	WIDE VOLTAGE RANGE	WIDE OPERATING RANGE	AUTO RESTART
CONTROL LOCK	TIMER	WEEKLY TIMER	WIRED CONTROLLER							

INCLUDED FUNCTION	OPTIONAL FUNCTION

- G10 Inverter technology
- Can power up to 5 indoor units
- Low voltage start-up
- Fins with anti-corrosion coating

- Self-diagnosis function
- Automatic defrost function
- Heavy gauge steel cabinet
- Eco-friendly R410A refrigerant



18K, 24K & 30K BTU/hr condensing units



36K & 42K BTU/hr condensing units

CONDENSING UNIT			GWHD(18)ND3GO	GWHD(24)ND3GO	GWHD(30)ND3GO	GWHD(36)ND3GO	GWHD(42)ND3EO
AHRI Code (without / with duct):			9084224 / 9856839	9084225 / 9856840	9084226 / 9856841	9084227 / 9856842	7017642 / 8106188
Connectable Indoor Units			2	2 to 3	2 to 4	2 to 5	2 to 5
Power Supply			V/Hz/Ph 208-230 / 60 / 1				
SYSTEM PERFORMANCE							
Capacity	Cooling	BTU/hr	18000 (6998 – 21000)	24000 (7500 – 33000)	28500 (8189 – 33438)	34000 (8871 – 35826)	36000 (8871 – 40944)
	Heating	BTU/hr	19000 (8530 – 22600)	26000 (7500 – 35000)	30000 (8189 – 32414)	42500 (8871 – 44356)	43000 (8871 – 46062)
Power Input	Cooling	W	1440	1920	2280	2800	3740
	Heating	W	1520	2050	2350	3350	3650
SEER (without / with duct)		BTU/W*hr	22.0 / 16.0	21.0 / 16.0	21.0 / 16.0	21.0 / 16.0	21.0 / 14.7
EER (without / with duct)		BTU/W*hr	12.5 / 11.5	12.5 / 10.5	12.5 / 10.5	12.14 / 11.5	10.4 / 9.8
HSPF (without / with duct)		BTU/W*hr	11.0 / 8.5	11.0 / 8.5	10.5 / 8.5	10.2 / 8.5	10.2 / 9.6
COP (without / with duct)		W/W	3.7 / 3.1	3.7 / 3.2	3.7 / 3.3	3.7 / 3.0	3.6 / 3.0
Energy Star® (without / with duct)		—	Oui / Non	Oui / Non	Oui / Non	Oui / Non	Non / Non
OUTDOOR UNIT SPECIFICATIONS							
Ambient Temperature	Cooling	°C (°F)	-18 to 48 (0 to 118)			-18 to 48 (0 to 118)	
	Heating	°C (°F)	-20 to 24 (-4 to 75)			-20 to 30 (-4 to 86)	
Airflow Volume		m³/hr (CFM)	3200 (1883)	4000 (2354)	4000 (2354)	7700 (4531)	7700 (4531)
Sound Pressure Level		dB(A)	56	59	59	61	61
Minimum Circuit Ampacity (MCA)		A	16	23	20	23	24
Maximum Overcurrent Protection (MOP)		A	25	30	30	35	40
Dimensions	Width	mm (in)	965 (38)	980 (38-37/64)	980 (38-37/64)	1080 (42-1/2)	1080 (42-1/2)
	Height	mm (in)	700 (27-9/16)	790 (31-7/64)	790 (31-7/64)	1103 (43-27/64)	1103 (43-27/64)
	Depth	mm (in)	396 (15-39/64)	440 (17-21/64)	440 (17-21/64)	440 (17-21/64)	440 (17-21/64)
Weight	Net	kg (lb)	52 (114.7)	69.5 (153.2)	66 (145.5)	90 (198.5)	90 (198.5)
	Gross	kg (lb)	56.5 (124.6)	74.5 (164.3)	70 (154.4)	98 (216.1)	98 (216.1)
REFRIGERATION SYSTEM							
Suction Line Size		mm (in)	ø 9.52 (3/8)	ø 9.52 (3/8)	ø 9.52 (3/8)	ø 9.52 (3/8)	ø 9.52 (3/8)
Liquid Line Size		mm (in)	ø 6.35 (1/4)	ø 6.35 (1/4)	ø 6.35 (1/4)	ø 6.35 (1/4)	ø 6.35 (1/4)
Minimum pipe length		m (ft)	3 (10)	3 (10)	3 (10)	3 (10)	3 (10)
Maximum pipe length		m (ft)	10 (32.8)	20 (65.6)	25 (82)	25 (82)	25 (82)
Maximum total pipe length		m (ft)	20 (65.6)	60 (196.8)	70 (229.7)	75 (246.1)	75 (246.1)
Maximum elevation between IDUs		m (ft)	10 (32.8)	10 (32.8)	7.5 (24.6)	7.5 (24.6)	7.5 (24.6)
Maximum elevation between ODU and IDU		m (ft)	10 (32.8)	10 (32.8)	15 (49.2)	15 (49.2)	15 (49.2)
Refrigerant Type / Charge		kg (oz)	R410A / 1.6 (56.45)	R410A / 2.2 (77.6)	R410A / 2.8 (98.8)	R410A / 3.65 (128.8)	R410A / 3.65 (128.8)

## ALLOWABLE COMBINATIONS AND CAPACITIES

GWHD(18)ND3GO	
2 units	
9 + 9	
9 + 12	

GWHD(24)ND3GO		
2 units		3 units
9 + 9		9 + 9 + 9
9 + 12		9 + 9 + 12
9 + 15		—
9 + 18		—
12 + 12		—
12 + 15		—
12 + 18		—

GWHD(30)ND3GO			
2 units		3 units	4 units
9 + 9		9 + 9 + 9	9 + 9 + 9 + 9
9 + 12		9 + 9 + 12	—
9 + 15		9 + 9 + 15	—
9 + 18		9 + 9 + 18	—
12 + 12		9 + 12 + 12	—
12 + 15		9 + 12 + 15	—
12 + 18		12 + 12 + 12	—
15 + 15		—	—
15 + 18		—	—
18 + 18		—	—

GWHD(36)ND3GO					
2 units		3 units		4 units	5 units
9 + 9	12 + 21	9 + 9 + 9	9 + 12 + 21	9 + 9 + 9 + 9	9 + 9 + 9 + 9 + 9
9 + 12	12 + 24	9 + 9 + 12	9 + 12 + 24	9 + 9 + 9 + 12	—
9 + 15	15 + 15	9 + 9 + 15	9 + 15 + 15	9 + 9 + 9 + 15	—
9 + 18	15 + 18	9 + 9 + 18	9 + 15 + 18	9 + 9 + 9 + 18	—
9 + 21	18 + 18	9 + 9 + 21	9 + 18 + 18	9 + 9 + 12 + 12	—
9 + 24	18 + 21	9 + 9 + 24	12 + 12 + 12	9 + 12 + 12 + 12	—
12 + 12	18 + 24	9 + 12 + 12	12 + 12 + 15	—	—
12 + 15	21 + 21	9 + 12 + 15	12 + 12 + 18	—	—
12 + 18	21 + 24	9 + 12 + 18	12 + 12 + 21	—	—

GWHD(42)ND3EO					
2 units		3 units		4 units	5 units
9 + 9	15 + 24	9 + 9 + 9	9 + 15 + 24	9 + 9 + 9 + 9	9 + 9 + 9 + 9 + 9
9 + 12	18 + 18	9 + 9 + 12	9 + 18 + 18	9 + 9 + 9 + 12	9 + 9 + 9 + 9 + 12
9 + 15	18 + 21	9 + 9 + 15	9 + 18 + 21	9 + 9 + 9 + 15	9 + 9 + 9 + 12 + 12
9 + 18	18 + 24	9 + 9 + 18	9 + 18 + 24	9 + 9 + 9 + 18	—
9 + 21	21 + 21	9 + 9 + 21	12 + 12 + 12	9 + 9 + 9 + 21	—
9 + 24	21 + 24	9 + 9 + 24	12 + 12 + 15	9 + 9 + 9 + 24	—
12 + 12	24 + 24	9 + 12 + 12	12 + 12 + 18	9 + 9 + 12 + 12	—
12 + 15	—	9 + 12 + 15	12 + 12 + 21	9 + 9 + 12 + 15	—
12 + 18	—	9 + 12 + 18	12 + 12 + 24	9 + 9 + 12 + 18	—
12 + 21	—	9 + 12 + 21	12 + 15 + 15	9 + 9 + 12 + 21	—
12 + 24	—	9 + 12 + 24	12 + 15 + 18	9 + 12 + 12 + 12	—
15 + 15	—	9 + 15 + 15	12 + 15 + 21	9 + 12 + 12 + 15	—
15 + 18	—	9 + 15 + 18	12 + 18 + 21	9 + 12 + 12 + 18	—
15 + 21	—	9 + 15 + 21	12 + 18 + 24	12 + 12 + 12 + 12	—

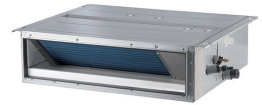
**Note:** It is crucial to calculate the capacity of the outdoor unit for the total building load and each indoor unit for its individual zone load. Not all sizes (or capacities) of indoor models are applicable to all outdoor units.



All combinations are Energy Star qualified, with the exception of combinations that include a ducted unit and/or a 42,000 BTU outdoor unit.

## INDOOR UNITS

**GREE** introduces layout flexibility by simultaneously powering up to five indoor units with one outdoor unit. For even greater flexibility, match your indoor units from our selection of wall-mounted units, mini floor consoles, slim ducts and ceiling cassettes to create your custom **Free Match** heating and cooling system.



### WALL-MOUNTED UNIT

The **LOMO 16** Series ductless wall-mounted unit has a compact design that blends well with any décor, the perfect option for your home or office needs.

### MINI FLOOR CONSOLE

The mini-console is aesthetically pleasing and the perfect size for any room. It can be installed 15 cm (6 inches) off the floor and its front panel allows access to the filter for easy cleaning.

### CEILING CASSETTE

The ceiling cassette offers discreet performance through an innovative design. It is suitable for any room and can be easily installed in ceilings, leaving only a decorative grille visible.

### SLIM DUCT

The slim duct (high or low static) offers an extremely discreet and compact solution. In addition, this indoor unit frees up a maximum amount of space to minimize the impact on decor.



Remote control YV1FB7F (included) Wired controller XE-71 (in option)



Remote control YT1FF (included)



Remote control YT1FF (included)



Wired controller XK-19 (in option)



Wired controller XK-19 (in option)

- Multiple fan speed
- Swing louver control
- Turbo mode
- Control lock
- Dry coil mode for anti-mildew protection
- Recovery after a power failure
- Washable dust filters

- 4-way discharge air
- Multiple fan speed
- Swing louver control
- Comfortable Sleep mode
- Dry coil mode for anti-mildew protection
- Washable dust filters

- Decorative grille (included)
- 4-way discharge air
- Multiple fan speed
- Control lock
- Swing louver control
- Recovery after a power failure
- Internal condensate drain pump
- Sentry float switch
- Washable dust filters

- Low static pressure capability (for low static ducts)
- High static pressure capability (for high static ducts)
- Alternate return air from bottom or rear
- Internal condensate drain pump
- Sentry float switch
- Slim line construction (7-7/8" high)

LOMO 16 WALL-MOUNTED UNIT			GWH(09)QB-D3DNA6E/I	GWH(12)QC-D3DNA6E/I	GWH(18)QD-D3DNA6E/I	GWH(24)QE-D3DNA6E/I
Power Supply	V/Hz/Ph	208-230 / 60 / 1 (powered by the outdoor unit)				
Capacity	Cooling	BTU/hr	9 000 (3 100 – 9 600)	12 000 (3 753 – 12 500)	18 000 (7 165 – 20 001)	22 000 (8 630 – 23 200)
	Heating	BTU/hr	9 500 (3 100 – 12 000)	13 000 (3 924 – 14 000)	19 000 (7 336 – 23 498)	23 000 (8 650 – 26 000)
Energy Star®	—	Yes	Yes	Yes	Yes	
Moisture Removal Capacity	L/hr (pt/hr)	0.80 (1.69)	1.40 (2.96)	1.80 (3.80)	2.00 (4.23)	
Airflow Volume	m³/hr (CFM)	540 / 490 / 410 / 290 (317 / 288 / 241 / 170)	680 / 540 / 410 / 330 (400 / 317 / 253 / 194)	800 / 685 / 580 / 480 (471 / 403 / 341 / 282)	1200 / 1100 / 1000 / 900 (706 / 647 / 589 / 529)	
Sound Pressure Level		dB(A)	43 / 38 / 34 / 28	45 / 39 / 35 / 29	46 / 42 / 39 / 35	48 / 44 / 40 / 36
	Width	mm (in)	790 (31-1/8)	845 (33-5/8)	970 (38-3/8)	1078 (42-1/2)
Dimensions	Height	mm (in)	275 (10-3/4)	289 (11-1/2)	300 (11-3/4)	325 (12-3/4)
	Depth	mm (in)	200 (8-1/2)	200 (8-1/2)	224 (8-3/4)	242 (9-5/8)
Weight	Net	kg (lb)	9 (20)	10.5 (23)	13.5 (30)	17 (38)
	Gross	kg (lb)	11 (24)	12.5 (29)	16.5 (36)	20.5 (45)

MINI FLOOR CONSOLE			GEH(09)AA-D3DNA1C/I	GEH(12)AA-D3DNA1C/I	GEH(18)AA-D3DNA1C/I
Power Supply	V/Hz/Ph	208-230 / 60 / 1 (powered by the outdoor unit)			
Capacity	Cooling	BTU/hr	8 873	11 946	18 089
	Heating	BTU/hr	9 556	12 969	19 795
Energy Star®	—	Yes	Yes	Yes	
Moisture Removal Capacity	L/hr (pt/hr)	0.80 (1.69)	1.40 (2.96)	1.80 (3.80)	
Airflow Volume	m³/hr (CFM)	500 / 430 / 410 / 330 / 280 / 230 (294 / 253 / 241 / 194 / 165 / 147)	600 / 520 / 481 / 400 / 360 / 280 (353 / 306 / 283 / 235 / 212 / 165)	650 / 620 / 550 / 410 / 320 (383 / 365 / 324 / 265 / 241 / 188)	
Sound Pressure Level	dB(A)	40 / 38 / 36 / 33 / 30 / 27 / 25	42 / 40 / 38 / 37 / 35 / 32 / 27	48 / 46 / 44 / 41 / 37 / 35 / 32	
Dimensions	Width	mm (in)	700 (27-9/16)	700 (27-9/16)	700 (27-9/16)
	Height	mm (in)	600 (23-5/8)	600 (23-5/8)	600 (23-5/8)
	Depth	mm (in)	215 (8-1/2)	215 (8-1/2)	215 (8-1/2)
Weight	Net	kg (lb)	15 (33)	15 (33)	15 (33)
	Gross	kg (lb)	18 (40)	18 (40)	18 (40)

CEILING CASSETTE			GKH(12)BB-D3DNA3A/I	GKH(18)BB-D3DNA3A/I	GKH(24)BC-D3DNA4A/I
Power Supply	V/Hz/Ph		208-230 / 60 / 1 (powered by the outdoor unit)		
Capacity	Cooling	BTU/hr	12000	14400	22800
	Heating	BTU/hr	13000	16000	27400
Energy Star®	—		Yes	Yes	Yes
Moisture Removal Capacity	L/hr (pt/hr)		1.40 (2.96)	1.80 (3.80)	2.50 (5.28)
Airflow Volume	m³/hr (CFM)		560 / 520 / 450 (330 / 306 / 265)	670 / 590 / 450 (394 / 347 / 265)	1220 / 1100 / 880 (718 / 647 / 518)
Sound Pressure Level	dB(A)		44 / 41 / 38 / 34	47 / 45 / 41 / 35	47 / 45 / 41 / 36
Dimensions	Width	mm (in)	595 (23-1/2)	595 (23-1/2)	840 (33-1/16)
	Height	mm (in)	595 (23-1/2)	595 (23-1/2)	840 (33-1/16)
	Depth	mm (in)	241 (9-1/2)	241 (9-1/2)	241 (9-1/2)
Weight	Net	kg (lb)	20.0 (44.1)	20.0 (44.1)	26.0 (57.3)
	Gross	kg (lb)	24.0 (52.9)	24.0 (52.9)	32.0 (70.6)
DECORATIVE GRILLE SPECIFICATIONS			TC03	TC03	TC04
Dimensions	Width	mm (in)	670 (26-3/8)	670 (26-3/8)	950 (37-9/16)
	Height	mm (in)	670 (26-3/8)	670 (26-3/8)	950 (37-9/16)
	Depth	mm (in)	50 (2)	50 (2)	60 (2-3/8)
Weight	Net	kg (lb)	1.37 (3.5)	1.37 (3.5)	3.18 (7)
	Gross	kg (lb)	2.28 (5)	2.28 (5)	4.99 (11)

LOW STATIC SLIM DUCT			GFH(09)EA-D3DNA1A/I	GFH(12)EA-D3DNA1A/I	GFH(18)EA-D3DNA1A/I	GFH(21)EA-D3DNA1A/I	GFH(24)EA-D3DNA1A/I
Power Supply	V/Hz/Ph		208-230 / 60 / 1 (powered by the outdoor unit)				
Capacity	Cooling	BTU/hr	8533	11946	15359	20478	24232
	Heating	BTU/hr	9556	13140	18772	22526	27304
Energy Star®	—		No	No	No	No	No
Moisture Removal Capacity	L/hr (pt/hr)		0.80 (1.69)	1.40 (2.96)	1.80 (3.80)	2.50 (5.28)	2.50 (5.28)
Airflow Volume	m³/hr (CFM)		450 / 300 / 250 (265 / 177 / 147)	500 / 400 / 300 (294 / 235 / 177)	700 / 600 / 500 (412 / 353 / 294)	1000 / 750 / 550 (589 / 441 / 324)	1000 / 750 / 550 (589 / 441 / 324)
Sound Pressure Level	dB(A)		37 / 34 / 31	39 / 35 / 32	41 / 37 / 33	42 / 38 / 34	42 / 38 / 34
Rated External Static Pressure	Pa (in.w.g)		10 (0.04)	10 (0.04)	10 (0.04)	15 (0.06)	15 (0.06)
Dimensions	Width	mm (in)	700 (27-3/4)	700 (27-3/4)	900 (35-3/8)	1100 (43-3/8)	1100 (43-3/8)
	Height	mm (in)	615 (24-1/4)	615 (24-1/4)	615 (24-1/4)	615 (24-1/4)	615 (24-1/4)
	Depth	mm (in)	200 (7-7/8)	200 (7-7/8)	200 (7-7/8)	200 (7-7/8)	200 (7-7/8)
Weight	Net	kg (lb)	22 (48.5)	23 (50.7)	27 (59.5)	31 (68.3)	31 (68.3)
	Gross	kg (lb)	27 (59.5)	29 (63.9)	36 (79.4)	41 (90.4)	41 (90.4)

HIGH STATIC SLIM DUCT			GFH(09)DA-D3DNA1A/I	GFH(12)DA-D3DNA1A/I	GFH(18)DB-D3DNA1A/I	GFH(24)DB-D3DNA1A/I
Power Supply	V/Hz/Ph		208-230 / 60 / 1 (powered by the outdoor unit)			
Capacity	Cooling	BTU/hr	9000	12000	18000	24000
	Heating	BTU/hr	9500	13000	19000	27000
Energy Star®	—		No	No	No	No
Moisture Removal Capacity	L/hr (pt/hr)		0.80 (1.69)	1.40 (2.96)	1.80 (3.80)	2.50 (5.28)
Airflow Volume	m³/hr (CFM)		550 / 430 / 360 / 320 (324 / 253 / 212 / 188)	600 / 490 / 420 / 360 (353 / 288 / 247 / 211)	1000 / 700 / 530 / 490 (588 / 412 / 312 / 288)	1250 / 950 / 770 / 690 (735 / 559 / 453 / 406)
Sound Pressure Level	dB(A)		36 / 30 / 27 / 25	38 / 35 / 30 / 26	39 / 33 / 29 / 26	42 / 36 / 32 / 28
Rated External Static Pressure	Pa (in.w.g)		60 (0.24)	60 (0.24)	90 (0.36)	90 (0.36)
Dimensions	Width	mm (in)	830 (32-43/64)	830 (32-43/64)	1130 (44-31/64)	1130 (44-31/64)
	Height	mm (in)	754 (29-11/16)	754 (29-11/16)	754 (29-11/16)	754 (29-11/16)
	Depth	mm (in)	300 (11-13/16)	300 (11-13/16)	300 (11-13/16)	300 (11-13/16)
Weight	Net	kg (lb)	32 (70.6)	32 (70.6)	42 (92.6)	42 (92.6)
	Gross	kg (lb)	38 (83.8)	38 (83.8)	48.5 (106.9)	48.5 (106.9)

Affordable comfort you can trust from the world's largest manufacturer of air conditioners.



GREE Canada products are subject to continuous improvements. GREE Canada reserves the right to modify product design, specifications and information without notice and without incurring obligations.

Authorized dealer