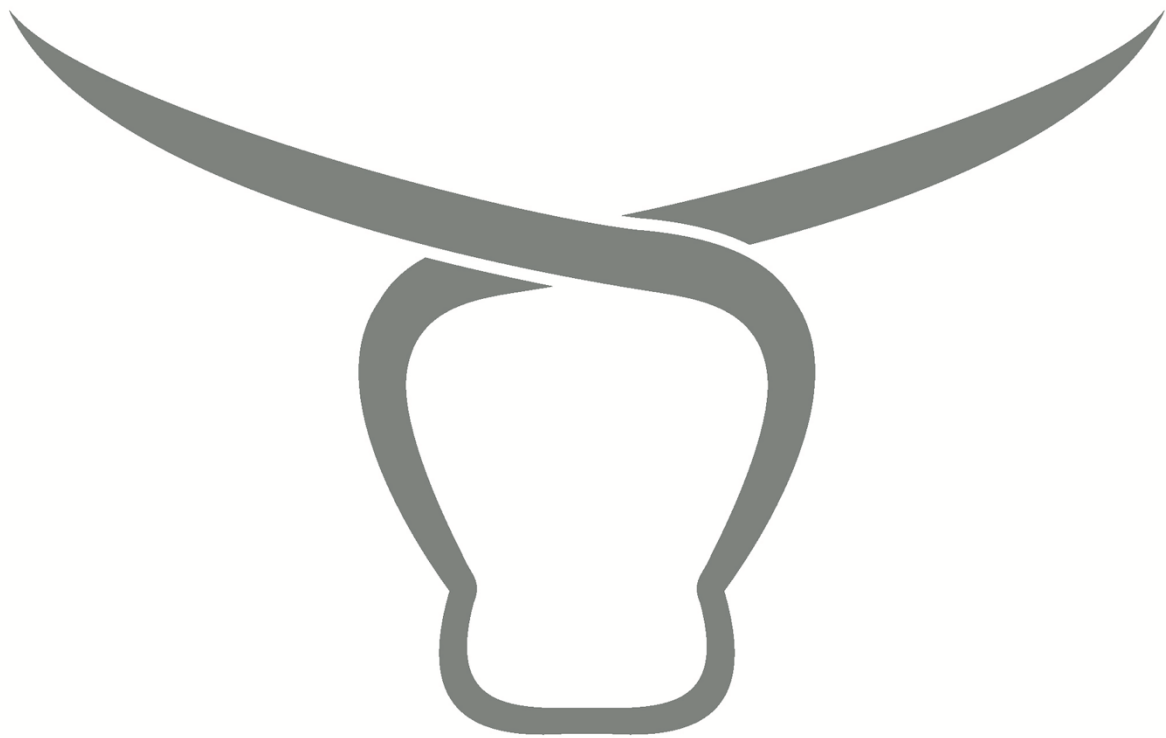


Livestock Scales Aluminium Platform Construction Guide



Aluminium Platform

This is our recommended platform construction as the total weight of the platform is less than 70 lbs for 87.5 inches x 27.5 inches in size (standard chute dimensions)

An Aluminium platform can be quickly built by your local fabrication / engineering company with the following guidance:

Aluminium materials required (marine grade): listed below

2" x 2" x ¼" Angle (platform edges)

2" x 2" x ¼" Square Tube (platform spine)

¼" aluminium tread diamond plate on top of frame

8" x 3" x ⅝" drilled and tapped plates (4) for the (4) load cells

Take the measurements for the platform size you need (to comfortably fit your chute) along with the images below and a local welder / fabricator and they will be able to build you a light weight, low profile super strong Aluminium platform that will be strong and rigid.

Ensure when measuring the chute internal dimensions, you open and close all access doors and observe any obstructions that may cause problems when attempting to install the platform and load cells / load bars.

Allow a ¼ to ½ inch gap between the edge of the platform and the edge of the chute so you have plenty of room to move when installing the platform and for opening access doors etc

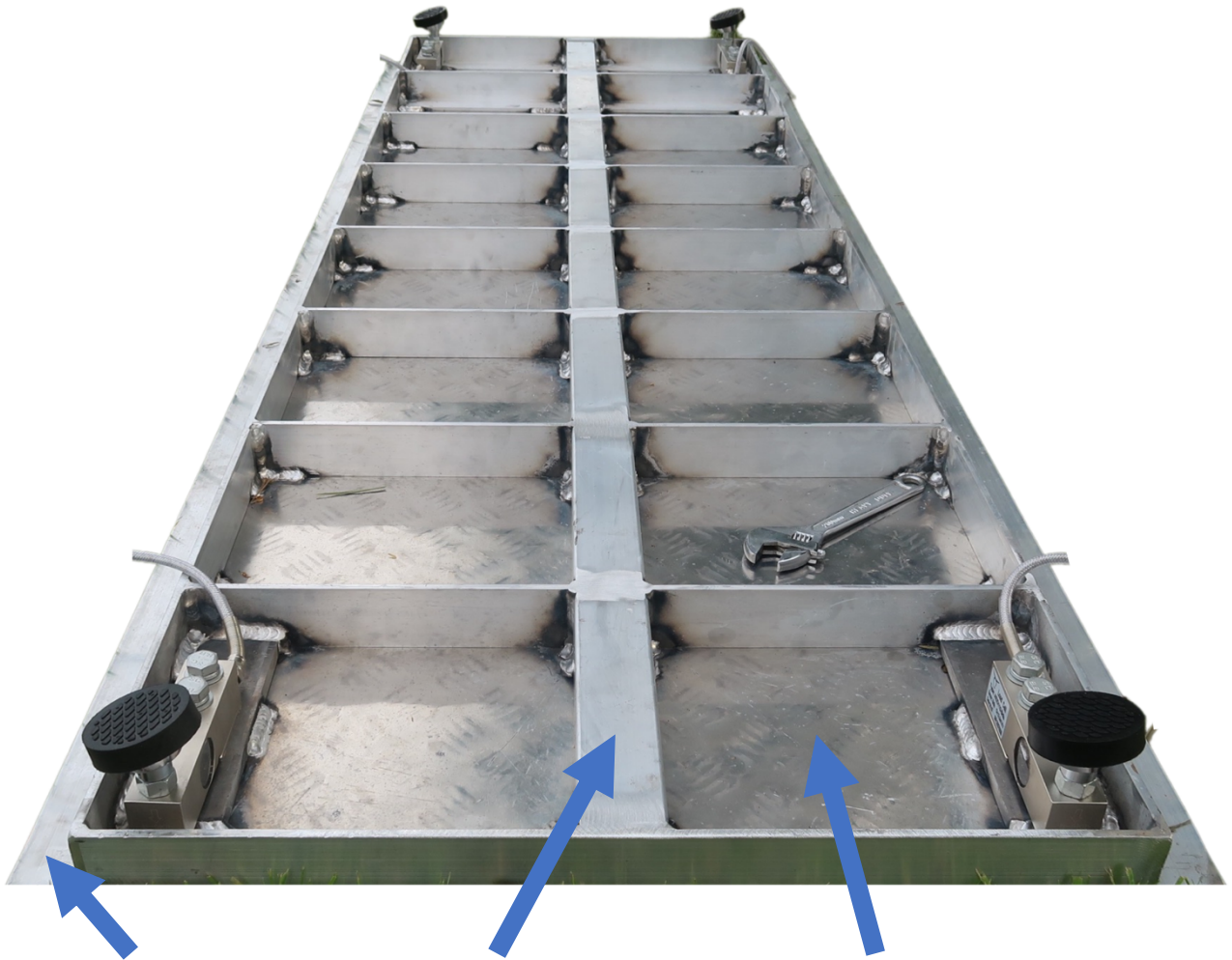
Aluminium is the recommended material (marine grade) for platform construction as it will be lightweight and able support the max weight requirements for general livestock weighing.

Lightweight, Low Profile, Heavy Duty – Aluminium Platform Design



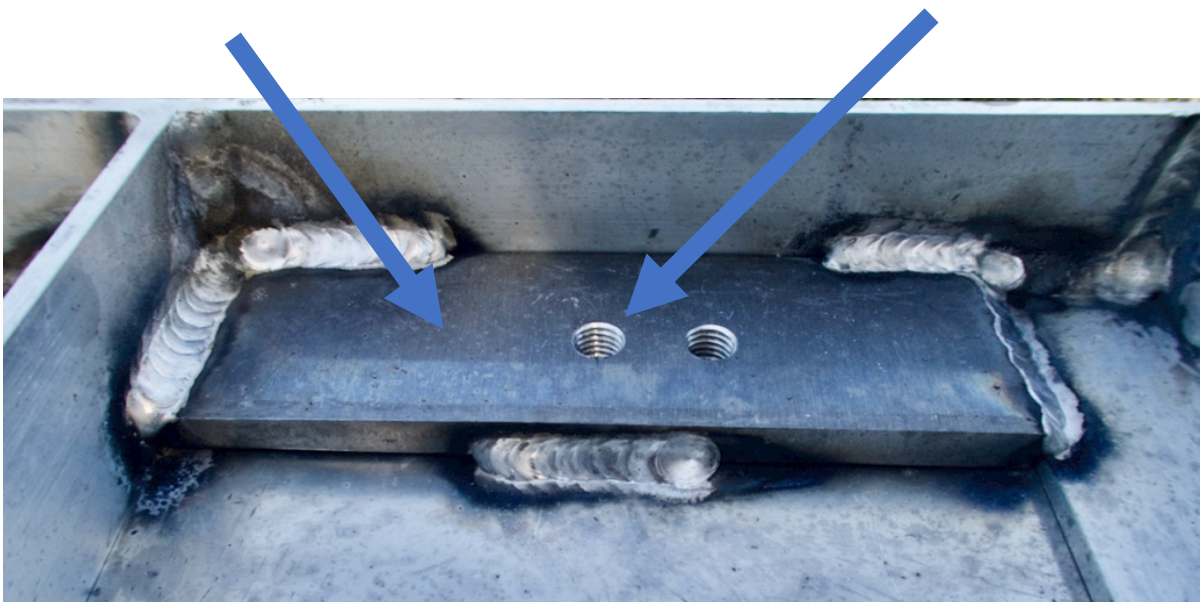
**2" Angle, 2" Square Tube with ¼" Diamond Tread
Less than 70 lbs total weight**

Platform Design for Scales Kit (4 x steel feet)

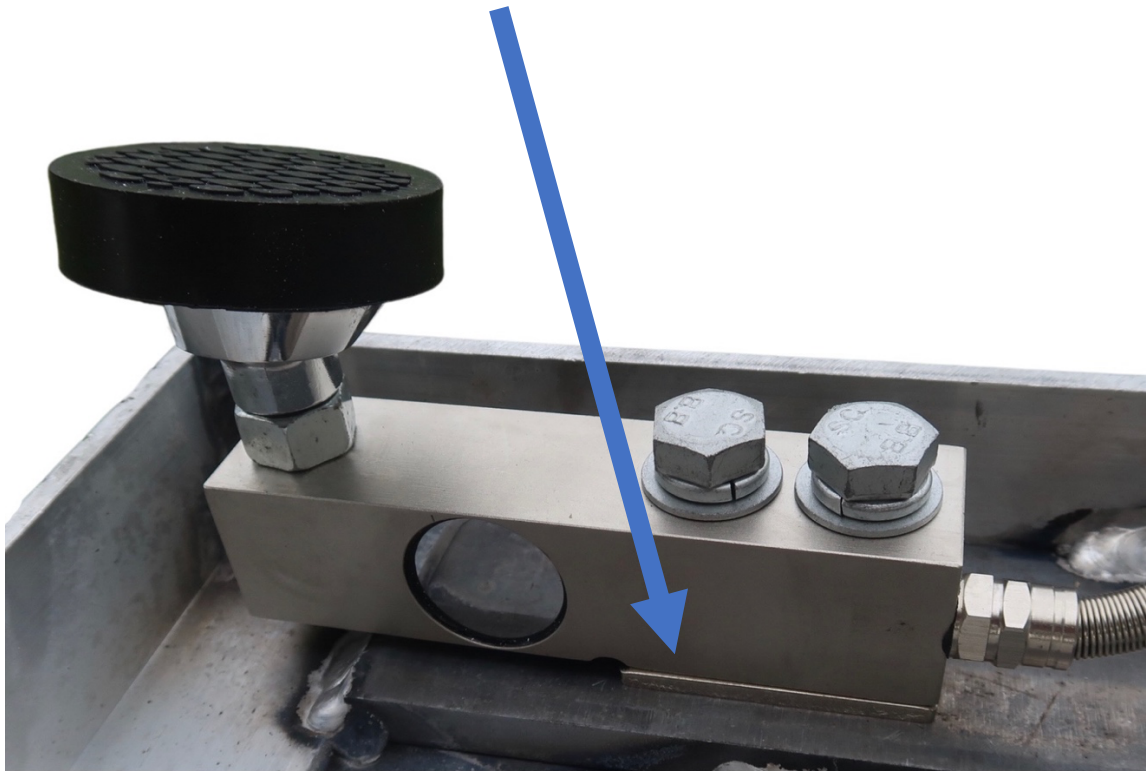


2" Angle, 2" Square Tube with $\frac{1}{4}$ " Diamond Tread

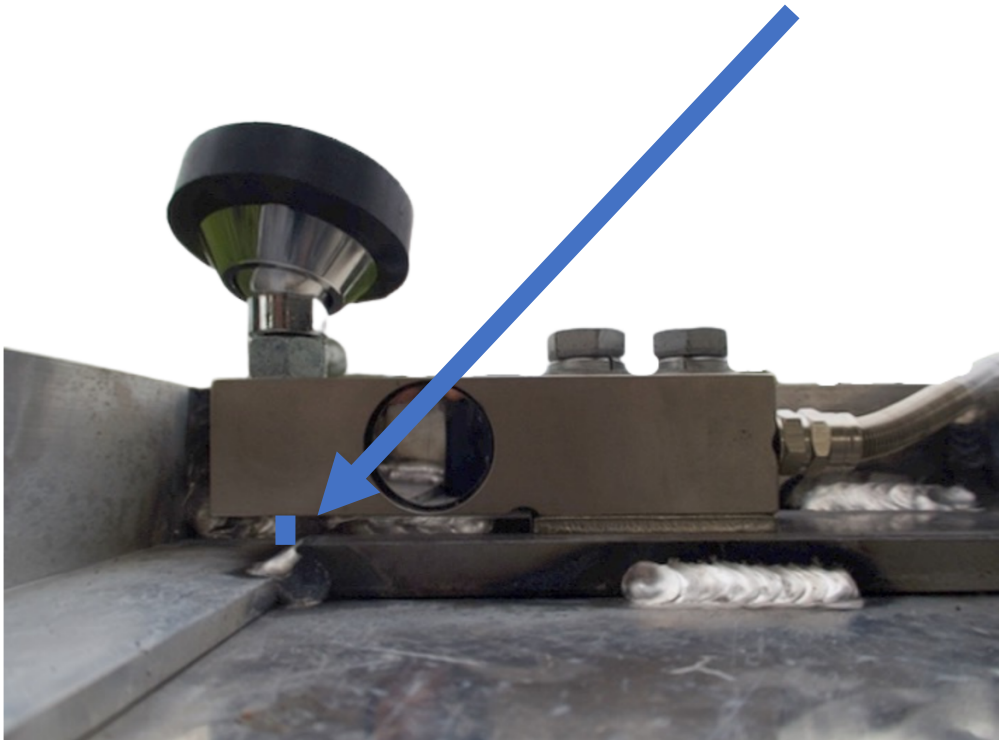
8" x 3" x $\frac{5}{8}$ " drilled and tapped plates for the load cells



Add the provided Spacer and bolts to secure load cells

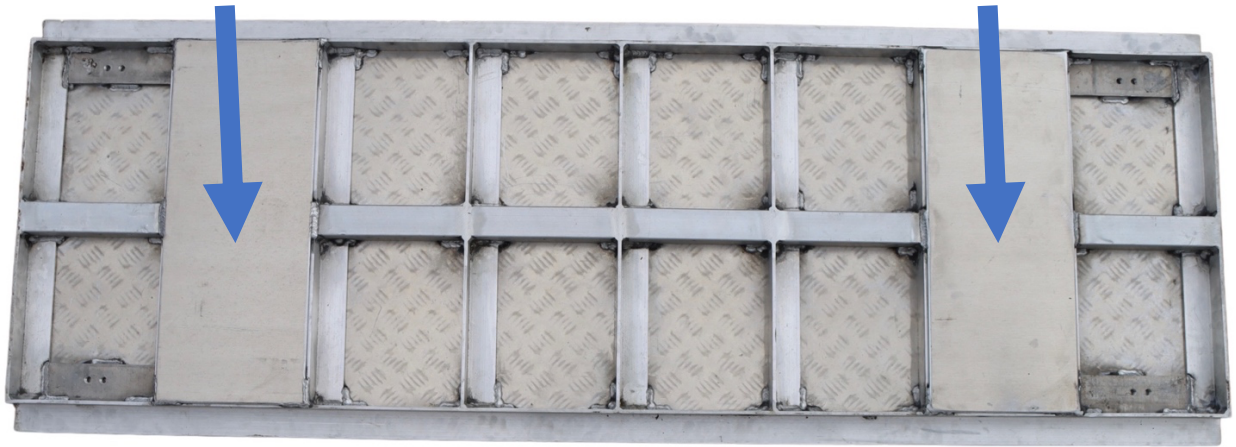


Ensure a good clearance gap is maintained (at least $\frac{1}{8}$ of an inch)

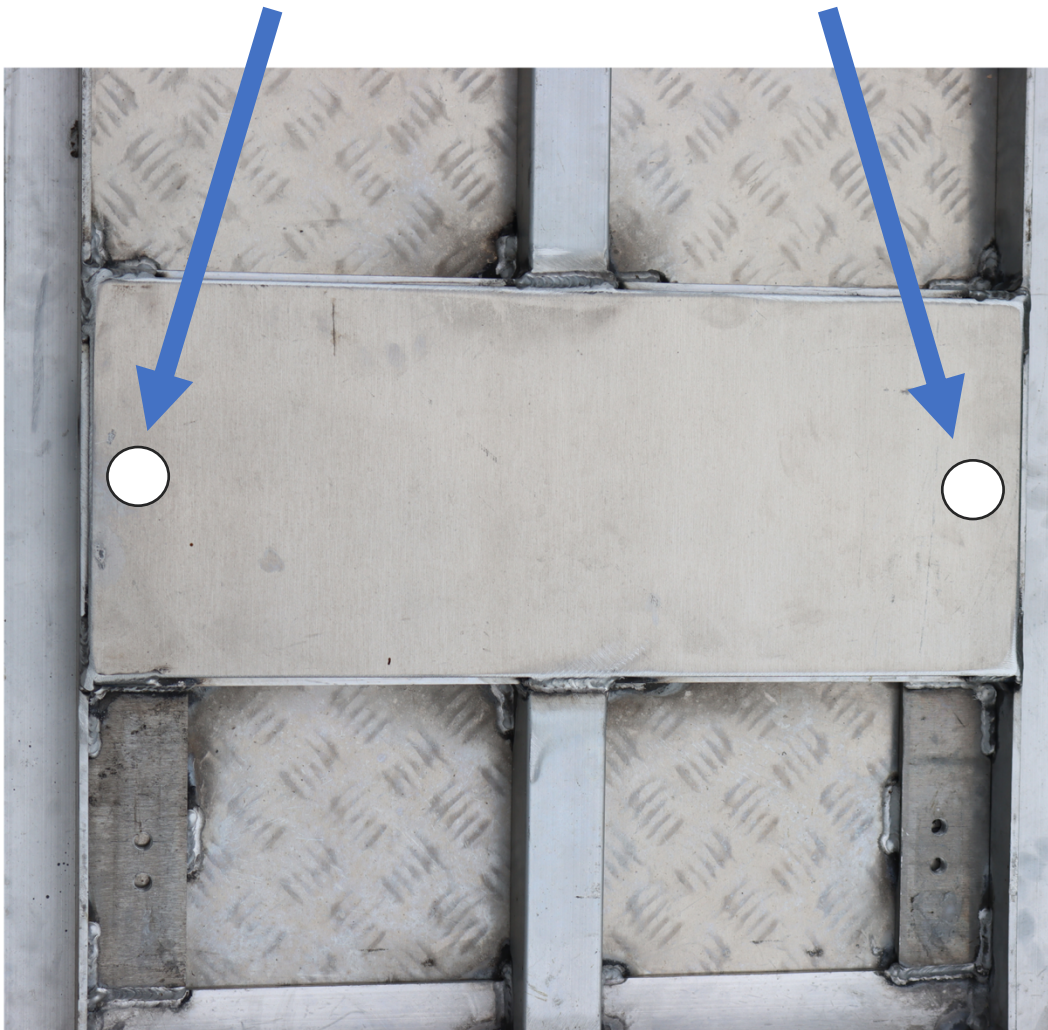


Construction of Platform for Load Bars

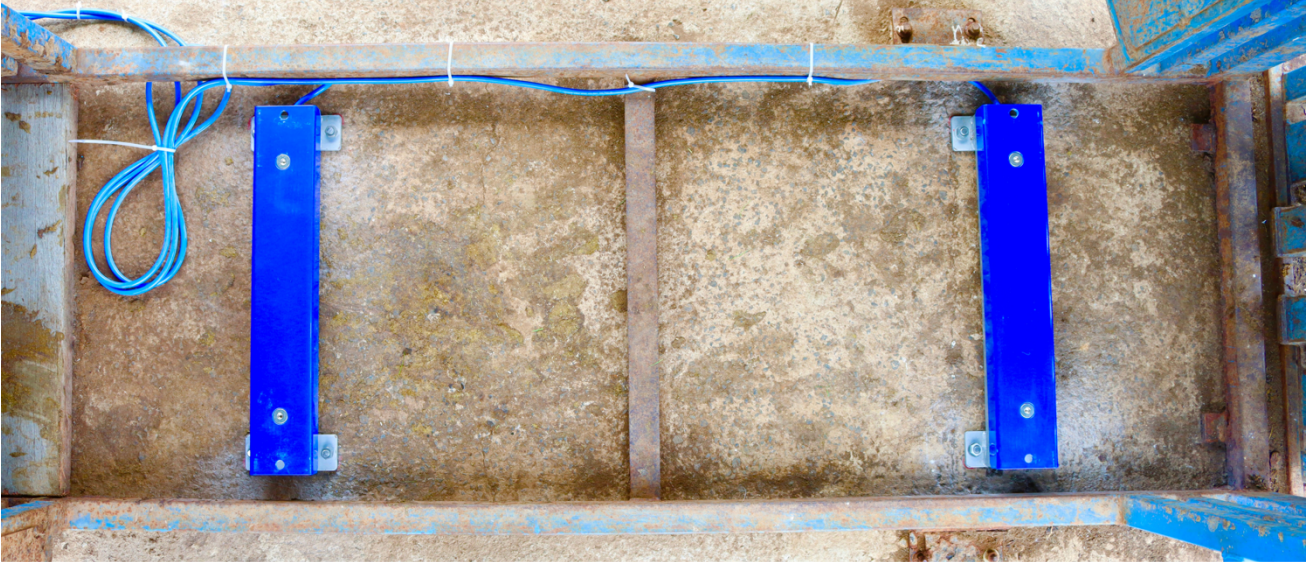
Add 2 x ¼ inch Aluminium Plates



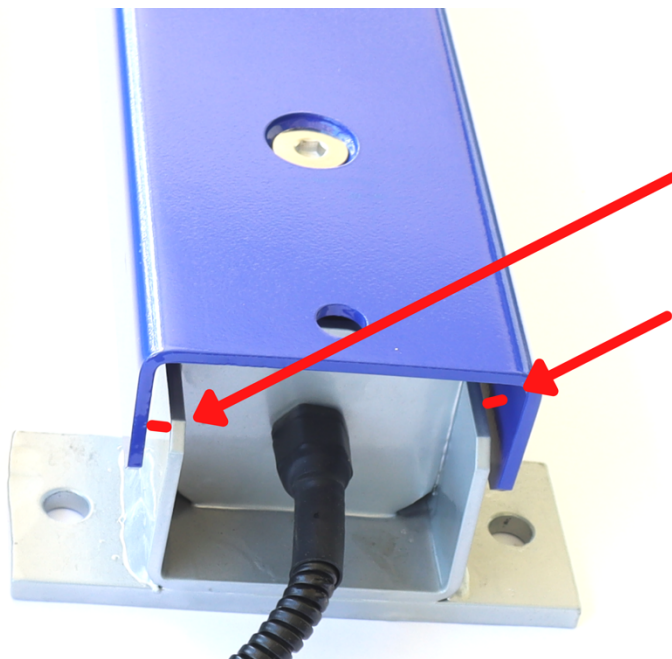
Drill holes into the ¼ inch plates to secure platform



Preparing the Load Bars for Platform Installation



When attaching the platform ensure the floating top section is not damaged when tightening the bolts



A gap of at least $\frac{1}{4}$ inch must be maintained between the floating top section and the main structure for the load bars to work correctly

Platform size - 87.5 inches x 27.5 inches (70 lbs)



Aluminium Platform Secured in Position

