

USER MANUAL STACK PRO

10000mAh MAGNETIC WIRELESS POWERBANK

Inside the Box

- 1 x STACK PRO Powerbank
- 1 x 30cm Type-C to Type-C Cable
- 1 x Metal Ring
- 1 x User Manual

Appearance & Interface Description

- 1 Type-C Input / Output Port
- 2 Foldable Stand
- 3 LED Indicator
- 4 USB-A Output Port
- 5 Wireless Power Transmission Area
- 6 Alignment Magnet
- 7 Power Button

Specifications

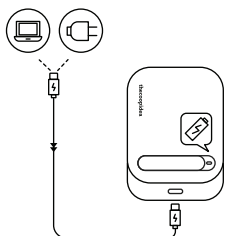
Capacity	: 10000mAh
Input	: Type-C (PD 3.0) : 5V=2.5A / 9V=2.0A / 12V=1.5A (18W Max)
Output	: Type-C (PD 3.0) : 5V=3.0A / 9V=2.2A / 12V=1.67A (20W Max)
	: USB-A (QC 3.0) : 5V=2.4A / 9V=2.0A / 12V=1.5A (18W Max)
	: Wireless : 5W / 7.5W / 10W / 15W (15W Max)
Simultaneous	: 15W Max
Material	: ABS
Battery Type	: Li-Polymer
Net Weight	: 200g
Dimensions	: 108 x 64 x 17mm (L x W x H)

Powerbank Recharging

When STACK PRO Powerbank is out of or low on power, please recharge it by plugging the attached Type-C cable into Type-C Input Port and the other side of cable to power source or Type-C port of a computer.

The recharging time may affected by the restriction of the charging port. Please use QC 3.0 or PD 3.0 adapter to shorten the time.

You can still charge your device during this situation.



LED Indicator Status

LED Colours in Different Battery Status:

0 - 25% = Red, 26 - 75% = Purple, 76 - 100% = White.

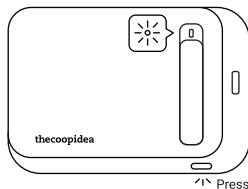
Activating Wireless Charging : Press Power Button once, LED lights green then turns and stays white / purple.

Battery Low : Red LED flashes.

Recharging : White / purple LED flashes.

Fully Recharged : LED stays white.

Wireless Charged : LED flashes colourfully.



Precautions

Please read all safety instructions and warnings thoroughly before using this product. Improper use of this product may result in damage to this or attached products.

- Do not disassemble the product or attempt to fix it.
- Kindly use an original charging cable provided to charge the product.
- Do not attempt to replace any part of this product or battery inside.
- Do not crush, puncture, dispose of in fire, short the contacts or expose the product to water or other liquids.
- Do not store or use the product in a high temperature environment, including intense sunlight or heat.
- Avoid drops, bumps, abrasions and impacts.
- If there is any reason to believe that there is damage to the product, discontinue use immediately.
- If you find that the product is too hot, or is emitting an odor, or is deformed, punctured or exhibits any suspicious or abnormal behavior, discontinue use immediately.
- Do not operate the product beyond the power limits given in the specifications.
- Use the product for its intended purpose only.

Wireless Charging

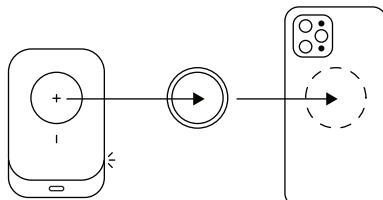
Please make sure your mobile device is compatible for wireless charging and make sure to use a wireless charging compatible case or no case when charging wirelessly. Generic cases may not support this feature.

Press Power Button once and then match the Wireless Power Transmission Area to the magnetic charging area of the mobile device. The magnet will snap the powerbank on the device and start charging.

For the mobile device with no magnet function, please paste the Metal Ring on the wireless charging area of the device.

The maximum wireless charging rate may affected by the restriction of your device. Please check your device before use.

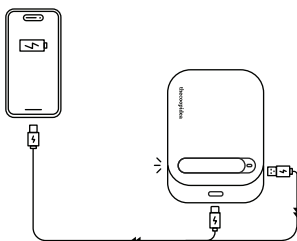
When the STACK PRO Powerbank is overheated, keep your device away until it cools down before attempting to charge.



Wired Charging

Plug a USB-A or Type-C cable into the USB-A or Type-C output port on STACK PRO Powerbank whereas the other end of cable with Type-C chargeable device, then it will charge automatically.

STACK PRO Powerbank supports simultaneous multi-charging (two devices with wired charging and one device with wireless charging).

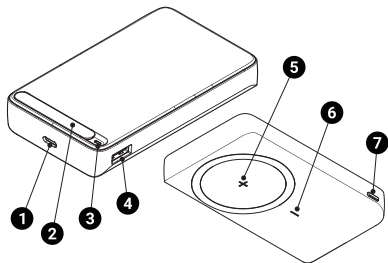


Explanation Of Warning Symbols & Notes

- CE This product is compliant with the CE directive.
- ⚠ This symbol indicates uninsulated material within your unit may cause an electrical shock. For safety, please do not remove product covering.
- ⚡ This symbol indicates direct current.
- ⚠ This symbol indicates attention to features for which you should read the enclosed literature closely to prevent operating and maintenance problems.
- ♻ Do not dispose of your product with other household waste. Please act according to local rules on the separate collection of electrical and electronic products and batteries. The correct disposal of those products helps prevent potentially negative consequences on the environment and human health.

Warranty Terms & Conditions

The product comes with a factory warranty for twelve (12) months from the date of purchase. Your product is in perfect condition. In the event where a replacement unit is needed, the owner must provide the original receipt of purchase in order to grant replacement, providing the defect falls under warranty terms. If your unit has been disassembled or repaired without the manufacturer's authorization, the warranty will be immediately voided. The owner is responsible for any fee and charges of delivering the unit back to the agent or manufacturer.



用戶手冊
STACK PRO
10000mAh 磁吸無線移動電源

包裝隨附內容

- 1 x STACK PRO 移動電源
- 1 x 30厘米 Type-C 至 Type-C 數據線
- 1 x 金屬環
- 1 x 用戶手冊

外觀及說明

- 1 Type-C 輸入 / 輸出端口
- 2 可折疊支架
- 3 LED 指示燈
- 4 USB-A 輸出端口
- 5 無線充電傳輸區
- 6 定位磁石
- 7 電源按鈕

規格

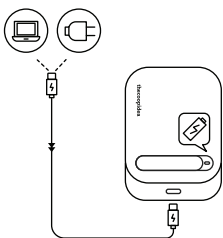
- 電池容量 : 10000 毫安時
- 輸入: Type-C (PD 3.0): 5V=2.5A / 9V=2.0A / 2V=1.5A (最大 18W)
- 輸出: Type-C (PD 3.0): 5V=3.0A / 9V=2.2A / 2V=1.67A (最大 20W)
- USB-A (QC 3.0): 5V=2.4A / 9V=2.0A / 12V=1.5A (最大 18W)
- 無線輸出 : 5W / 7.5W / 10W / 15W (最大 15W)
- 同步輸出 : 15W (最大)
- 材質 : 丙烯酸-丁二烯-苯乙烯共聚物
- 電池類型 : 鋰聚合物
- 淨重 : 200 克
- 尺寸 : 108 x 64 x 17 毫米 (長 x 闊 x 高)

為移動電源充電

當 STACK PRO 移動電源沒電或電量不足時，請將附送的 Type-C 數據線連接 Type-C 輸入端口，並將數據線的另一端插入電源或電腦的 Type-C 端口進行充電。

充電時間可能會受到充電端口的限制影響。請使用符合 QC 3.0 或 PD 3.0 標準的適配器以縮短充電時間。

在此情況下，您仍然可以為設備充電。



無線充電

請確保您的手機設備兼容無線充電功能，及確保手機保護殼兼容無線充電功能，或者除下手機保護殼。一般手機保護殼可能不具備無線充電功能。

按下電源按鈕，把無線充電輸出區對準手機的磁吸充電位置，產品會自動貼上手機開始充電。

如手機不具備吸功能，可將金屬環貼在手機的無線充電位置。

無線充電的速率可能會受到設備自身的功能限制影響。請在使用前檢查您的設備。

當 STACK PRO 移動電源過熱時，請取下您充電中的設備，直到冷卻後再嘗試重新充電。

有線充電

將 USB-A 或 Type-C 數據線連接 STACK PRO 移動電源的 USB-A 或 Type-C 輸出端口，將數據線的另一端連接 Type-C 充電設備，即可自動開始充電。

STACK PRO 移動電源支援多設備同時充電(兩個有線充電設備和一個無線充電設備)。

LED 指示燈狀態

不同電量狀態下的 LED 指示燈顏色：
0% 至 25% 為紅色，26% 至 75% 為紫色，76% 至 100% 為白色。

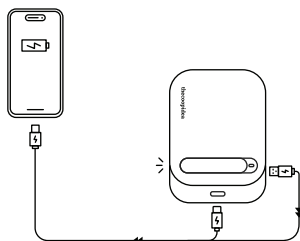
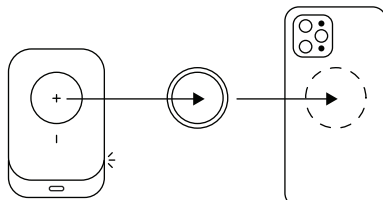
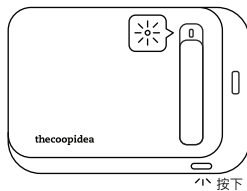
啟動無線充電功能：按下電源按鈕一次，LED 燈亮起綠光，其後白光 / 紫光長亮。

電量不足：LED 燈紅光閃亮。

重新充電：LED 燈白光 / 紫光閃亮。

完成充電：LED 燈白光長亮。

無線充電中：LED 燈彩光漸變。



警告

在使用本產品之前，請仔細閱讀所有安全說明和警告。不當使用本產品可能會損壞本產品或附屬產品。

- 請勿拆卸或試圖修理本產品，以免保修失效。
- 請使用本產品提供的原裝充電線為產品充電。
- 請勿嘗試更換本產品或內部電池的任何部分。
- 請勿擠壓、刺穿、投入火中、使接觸點短路或將本產品暴露於水或其他液體中。
- 請勿在高溫環境下存放或使用本產品，包括在強烈的陽光或高溫地方。
- 避免跌下、碰撞、磨損和撞擊。
- 如果發現本產品有損壞，請立即停止使用。
- 如果您發現本產品過熱、散發異味、變形、刺破或有任何可疑或異常行為，請立即停止使用。
- 請勿以超出規格限制的功率操作本產品。
- 僅可依預定用途使用本產品。

警告符號及注意事項說明

- CE 本產品符合 CE 指令。
- 此符號表示裝置內的非絕緣材料可能會導致觸電。為了安全起見，請勿拆下產品外殼。
- 此符號表示直流電。
- 此符號表示請仔細閱讀隨附文字並應注意功能，以免發生操作及保養問題。
- 請勿將本產品連同其他家庭廢棄物一起丟棄。請遵守當地電子與電氣產品及電池分類回收的規則。正確丟棄此類產品可避免對環境及人類健康產生潛在的負面影響。

保修條款和條件

本產品自購買日起隨附十二 (12) 個月原廠保修。本產品狀態良好。故障屬於保修條款範圍的情況下，若需更換裝置，擁有人必須提供原廠購買收據才可進行更換。若裝置在未經製造商授權的情況下拆解或修繕，保修將立即失效。擁有人需自行負責將裝置退回代理或製造商的任何費用。

