

Inside the Box

1. TAPPY Wireless Keyboard x1 (Battery Not Included)
2. TAPPY Wireless Mouse x1 (Battery Not Included)
3. Mouse Pad x 1
4. User Manual

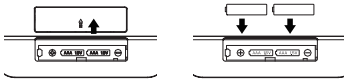
- 1** LED Indicator
- 2** Battery Compartment (AAA Battery)
- 3** DPI Switcher
- 4** Battery Compartment (AA Battery)
- 5** Mini Connector

**USER MANUAL
TAPPY**

WIRELESS KEYBOARD & MOUSE SET

Keyboard Batteries Installation

Please prepare 2 AAA alkaline batteries.



1. Open the cover of battery compartment.
2. Insert 2 AAA alkaline batteries into the battery compartment.

Mouse Battery Installation

Please prepare one AA alkaline battery.



1. Open the cover of battery compartment.
2. Insert one AA alkaline battery into the battery compartment.
3. Close the battery compartment cover.

Connecting To Device



1. Take the Mini Connector out from the Wireless Mouse.
2. Plug in the Mini Connector to the USB port of the device.

** TAPPY Wireless Mouse and Keyboard should be connected automatically.

Keyboard Hotkeys

- FN + ESC = Media Player
- FN + F1 = Play / Pause
- FN + F2 = Previous Track
- FN + F3 = Next Track
- FN + F4 = Volume Up
- FN + F5 = Volume Down
- FN + F6 = Mute
- FN + F7 = Web Home
- FN + F8 = Search
- FN + F9 = My Favorite
- FN + F10 = Mail
- FN + F11 = Key Lock
- FN + F12 = My Computer

Safety Note

- Protect the product from dirt, moisture and overheating and use in dry rooms only.
- Do not drop the product and do not expose it to any major shocks.
- Do not operate the product outside the power limits given in the specifications.
- Do not modify the product in any way. Doing so voids the warranty.
- Do not continue to operate the product if it becomes visibly damaged.
- Use the product for its intended purpose only.
- Keep this product, as all electrical products, out of the reach of children.
- Do not use the product in the immediate vicinity of heaters or other heat sources or in direct sunlight.
- Dispose of packaging material immediately according to locally applicable regulations.
- Please do not use any alcohol to clean up the printing area of the product.

Energy Saving Mode

TAPPY Wireless Mouse automatically goes into energy saving mode when: Mini Connector is not plugged into any device, or the mouse is no longer in use after 30 minutes. With the energy saving mode turned on, the mouse switches to sleep mode after 8 minutes. To get the mouse out of energy saving or sleep mode, please use the scroll wheel or click any buttons to resume using the mouse.

Specifications

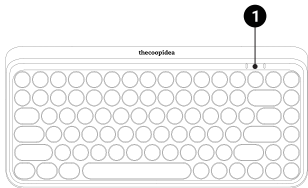
Battery Type :	Keyboard : 2 x AAA Alkaline Batteries
	Mouse : 1 x AA Alkaline Battery
Dimensions :	Keyboard : 32 x 15 x 3 cm (L x W x H)
	Mouse : 11 x 6 x 3.5 cm (L x W x H)
	Mouse Pad : Pikachu : 58.3 x 26.5 cm (L x W)
	Eveve : 62.9 x 28.4 cm (L x W)
	Snorlax : 56 x 20.8 cm (L x W)
Net Weight :	Keyboard : 490g
	Mouse : 59g
	Mouse Pad : Pikachu : 156g
	Eveve : 160g
	Snorlax : 146g
DPI :	: 1200
Wireless Frequency Bands :	: 2.4 GHz

Warranty Terms & Conditions

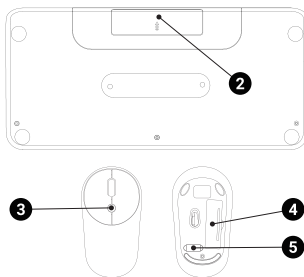
The product comes with a factory warranty of twelve (12) months from the date of purchase. Your product is in perfect condition. In the event where a replacement unit is needed, the owner must provide the original receipt of purchase in order to grant replacement, providing the defect falls under warranty terms. If your unit has been disassembled or repaired without the manufacturer's authorization, the warranty will be immediately voided. The owner is responsible for any fee and charges of delivering the unit back to the agent or manufacturer.

Explanation Of Warning Symbols & Notes

- This product is compliant with the CE directive.
- This product is compliant with RoHS (Restriction of Hazardous Substances Directive 2002/95/EC).
- This symbol indicates direct current.
- Do not dispose of your product with other household waste. Please act according to local rules on the separate collection of electrical and electronic products and batteries. The correct disposal of those products helps prevent potentially negative consequences on the environment and human health.



用戶手冊 TAPPY 無線鍵盤和鼠標套裝



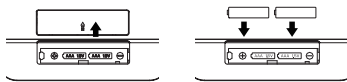
包裝隨附內容

1. TAPPY 無線鍵盤 x 1 (不含電池)
2. TAPPY 無線滑鼠 x 1 (不含電池)
3. 滑鼠墊 x 1
4. 用戶手冊

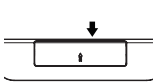
- 1 LED指示燈
- 2 電池倉 (AAA 電池)
- 3 DPI 切換器
- 4 電池倉 (AA 電池)
- 5 迷你連接器

鍵盤電池安裝

請準備兩節 AAA 鹼性電池。



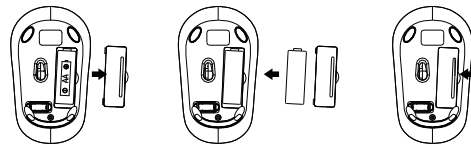
1. 打開電池倉蓋。
2. 將兩節 AAA 鹼性電池插入電池倉。



3. 合上電池倉蓋。

滑鼠電池安裝

請準備一節 AA 鹼性電池。



1. 打開電池倉蓋。
2. 將一節 AA 鹼性電池插入電池倉。
3. 合上電池倉蓋。

連接到設備



1. 從無線滑鼠和鍵盤中取出迷你連接器。
2. 將迷你連接器插入設備的 USB 端口。

** TAPPY 無線滑鼠和鍵盤應自動連接。

節能模式

TAPPY 無線滑鼠會在以下情況自動進入節能模式：迷你連接器沒有插入任何設備，或鼠標開置了 30 分鐘或以上。開啟節能模式後，鼠標會在 8 分鐘後切換到睡眠模式。如需使鼠標退出節能或睡眠模式，請轉動滾輪或單擊任一滑鼠鍵。

快捷鍵

- FN + ESC = 媒體播放器
- FN + F1 = 播放 / 暫停
- FN + F2 = 上一曲曲目
- FN + F3 = 下一曲曲目
- FN + F4 = 提高音量
- FN + F5 = 降低音量
- FN + F6 = 靜音
- FN + F7 = 網絡首頁
- FN + F8 = 搜尋
- FN + F9 = 我的最愛
- FN + F10 = 電郵
- FN + F11 = 按鍵鎖
- FN + F12 = 我的電腦

Safety Note

- 請勿使產品受灰塵、濕氣和過熱的影響，只能在乾燥的室內使用。
- 請勿使產品摔跌，勿使其遭受劇烈衝擊。
- 請勿在超出規格功率限制的情況下操作本產品。
- 請勿以任何方式修改產品，以免保修條款失效。
- 如果產品出現明顯損壞，請勿繼續操作產品。
- 僅可依預定用途使用本產品。
- 與所有電子產品一樣，請將本產品放置在兒童接觸不到的地方。
- 請勿在加熱器或其他熱源附近或陽光直射下使用本產品。
- 根據當地適用的法規棄置包裝材料。
- 請不要使用任何含酒精成份的清潔產品的拭擦印花區域。

規格

- 電池類型：鍵盤：兩節 AAA 鹼性電池 (不包括在內)
- 滑鼠：一節 AA 鹼性電池 (不包括在內)
- 尺寸：鍵盤：32 x 15 x 3 厘米 (長 x 寬 x 高)
- 滑鼠：11 x 6 x 3.5 厘米 (長 x 寬 x 高)
- 滑鼠墊：Pikachu：58.3 x 26.5 厘米 (長 x 寬)
- Eevee：62.9 x 28.4 厘米 (長 x 寬)
- Snorlax：56 x 20.8 厘米 (長 x 寬)
- 淨重：鍵盤：490 克
- 滑鼠：59 克
- 滑鼠墊：Pikachu：156 克
- Eevee：160 克
- Snorlax：146 克
- DPI：1200
- 無線電頻段：2.4 GHz

保修條款和條件

本產品自購買日起隨附十二 (12) 個月原廠保固。本產品狀態良好。故障屬於保固條款範圍的情況下，若需更換裝置，擁有人必須提供原廠購買收據才可進行更換。若裝置在未經製造商授權的情況下拆解或修繕，保固將立即失效。擁有人需自行負責將裝置退回代理或製造商的任何費用。

警告符號及注意事項說明

- 本產品符合 CE 指令。
- 本產品符合 RoHS (有害物質限制指令 2002/95/EC)。
- 此符號表示直流電。
- 請勿將本產品連同其他家庭廢棄物一起丟棄。請遵守當地電子與電氣產品及電池分類回收的規則。正確丟棄此類產品可避免對環境及人類健康產生潛在的負面影響。