

- ❶ Power Button
- ❷ USB-A1 & A2 Output
- ❸ USB-C (Output & Input)
- ❹ Micro USB Input
- ❺ LED Indicator Light

Content

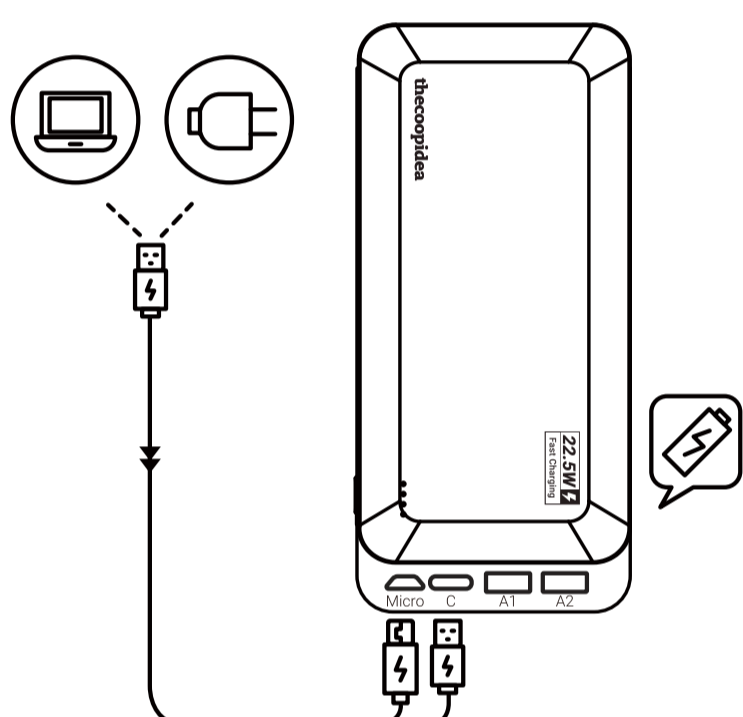
- GUMMY PRO2 Powerbank x 1
- 30cm USB-A To USB-C Cable x 1
- User Manual x 1

Technical Specifications

Input	Micro USB 5V = 2A/9V = 2A USB-C 5V = 3.0A/9V = 2A
Output	USB-A1 & A2 4.5V = 5A/5V = 4.5A/9V = 2A/ 12V = 1.5A (Max. 22.5W) USB-C 5V = 3A/9V = 2.2A/12V = 1.67A (Max.20W)
Capacity	10000mAh
Battery Type	Li-Polymer
Dimensions	143 x 68 x 16mm (L x W x D)
Net Weight	230g
Material	ABS
Operating Temperature	0°C ~ 40°C
Recharge Time (10 W)	6 to 7 Hours
Recharge Time (18 W)	3 to 4 Hours

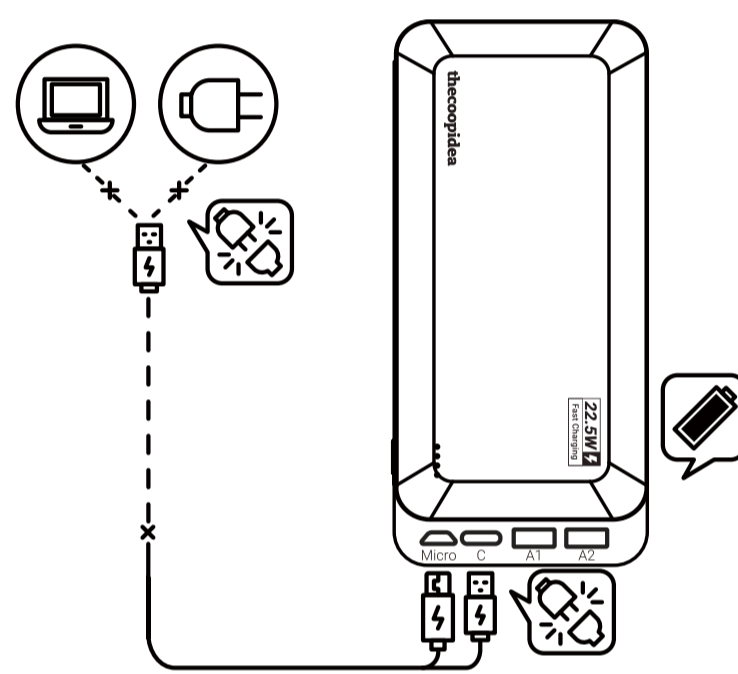
GUMMY PRO2

10000mAh PD POWERBANK

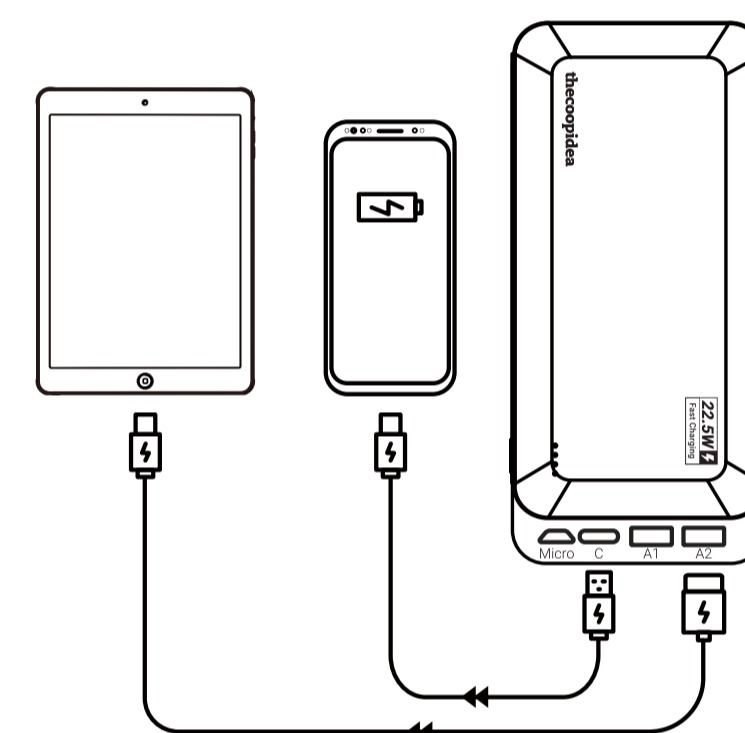


To Charge The Powerbank

Please fully charge powerbank before first used. Connect the power bank (via USB C or Micro USB cable) to power sources or USB port of computer. LED indicator will blink if it is charging.



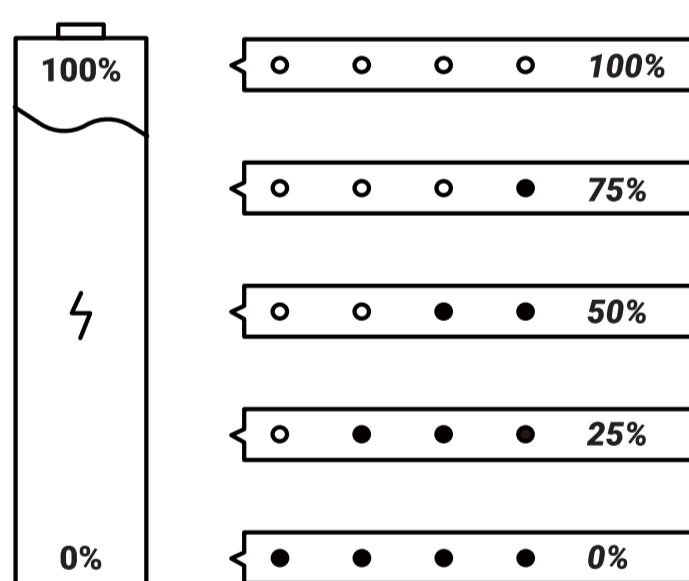
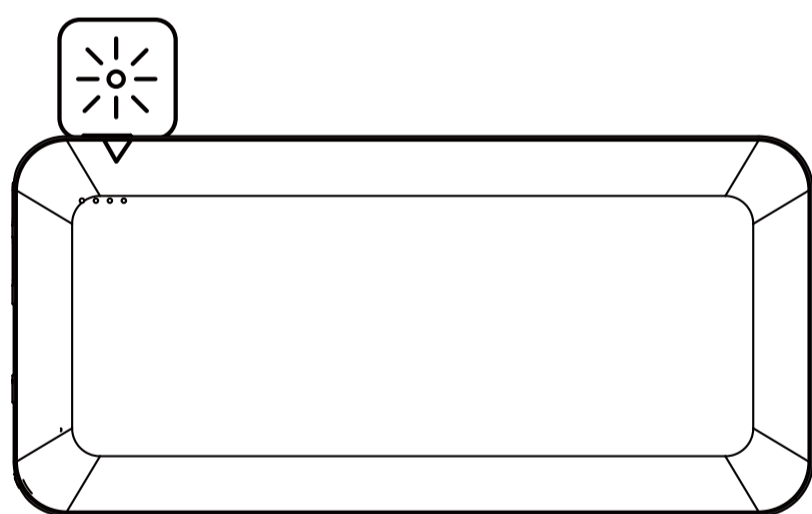
Once the power bank is fully charged, please remove the charging cable from the product.



To Charge Your Devices

By Cable: Connect your devices to the USB-A and USB-C port of the power bank (via charging cable) to start charging.

Power Indication



Safety Notes

- Protect the product from dirt, moisture and overheating and use it in dry rooms only.
- Do not drop the product and do not expose it to any major shocks.
- Do not operate the product outside the power limits given in the specifications.
- Do not modify the device in any way. Doing so voids the warranty.
- Do not continue to operate the device if it becomes visibly damaged.
- Use the product for its intended purpose only.
- Keep this product, as all electrical products, out of the reach of children.
- Do not use the product in the immediate vicinity of heaters or other heat sources or in direct sunlight.
- Lay all cables so that they do not pose a tripping hazard.
- Do not bend or crush the cable.
- Always pull directly on the plug when disconnecting the cable, never on the cable itself.
- Dispose of packaging material immediately according to locally applicable regulations.
- When charging batteries built into a device, pay attention to the maximum charging time for the batteries.

Warranty Terms & Condition

The product comes with a twelve (12) months factory warranty from the date of purchase. Your product is in perfect condition. In the event where a replacement unit is needed, the owner must provide the original receipt of purchase in order to grant replacement, providing the defect falls under warranty terms. If your unit has been disassembled or repaired without the manufacturer's authorization, the warranty will be immediately voided. The owner is responsible for any fee and charges of delivering the unit back to the agent or manufacturer.

Explanation Of Warning Symbols And Notes

- This product is compliant with the CE directive.
- This symbol indicates uninsulated material within your unit may cause an electrical shock. For safety, please do not remove product covering.
- This symbol indicates direct current.
- This symbol indicates attention to features for which you should read the enclosed literature closely to prevent operating and maintenance problems.
- Do not dispose of your product with other household waste. Please act according to local rules on the separate collection of electrical and electronic products and batteries. The correct disposal of these products helps prevent potentially negative consequences on the environment and human health.

