

English Manual

Manual Instruction

Thank you for choosing our aroma diffuser. In order to have a pleasant experience on the unit, please read the manual instruction carefully and use it in a correct way.

During the experience of the unit, please always retain this manual at hand so that you can refer to it in case of any problem. This manual can be used as proof of guarantee, and guarantee card is a part of it. Please keep it carefully.

Fragrance will spread into the air with the mist under the vibration of ultrasonic mechanism when turn on the unit. You can enjoy the natural fragrance fully as it's not damaged by vibration rather than heating. Besides, the beautiful led color can be used as a night lamp.

Specifications

【Product】 Aromatherapy Diffuser

【Size】 92X190mm(H)

【Weight】 Approx. 750g

【Power】 Special Adapter

Input: AC 100-240V 50/60HZ

Output: DC 24V 600mA

Length of power line: Approx. 170cm

Power: Approx. 12W

【Timer】 30S/1H/2H/ON

【Aromatherapy】 Combination of water and essential oil can be spread as a small molecule under the high ultrasonic vibration. Fragrance is kept naturally rather than damaged by heating. You can enjoy the natural fragrance completely by using this unit.

Ultrasonic Frequency: 2.4MHZ

【Applicable Area】 10-20 Square meters

【Water Capacity】 100ml

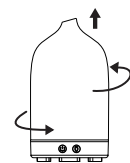
【Led Light】 7pcs

【Material】 Porcelain, PP, ABS

【Accessories】 Special AC adapter, Water Cup, Manual Instruction

MADE IN THE PRC

1. Take off the cover from the water tank carefully, add clean cold tap water and essential oil to the water tank, install the cover.

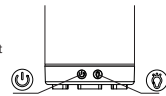


Mist Control

Press button for more than one second, choose the timer from 30S, 1H, 2H or ON.

Light Control

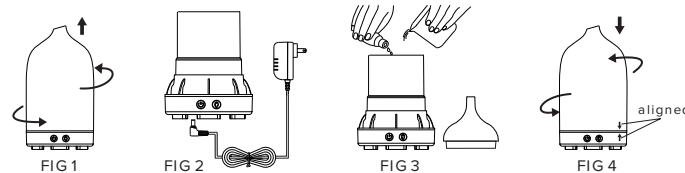
Press button to turn on the led light, the light color will change automatically, press again to set the color as you like. If you need to turn it off, please long press button.



English Manual

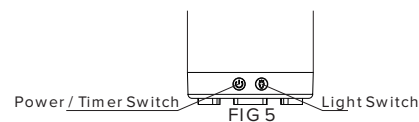
How to Operate

1. Keep the unit stable, remove the ceramic cover by twisting forth and back and then pull upwards. Do not lean the unit if there's remaining water. FIG 1
2. Attach the DC plug of the adapter to the DC-IN jack, fix the power cord in the slot. FIG 2
3. Add clean cold tap water to the water tank using a measuring cup, without exceeding the maximum waterline. DO NOT spill any water outside the tank. DO NOT use hot water and refill while the unit is in operation. FIG 3
4. Add essential oil, 2-3 drops (0.2-0.3ml) is advised for full water. FIG 3
5. Attach the AC plug to the power supply and turn on the wall switch. FIG 4
6. Install the ceramic cover, put the ceramic cover on the water tank and twist it forth and back until the cover fits properly with the base without any gap. DO NOT lean the unit in case of spillage accident. FIG 4



7. Press button for one second to turn on the mist, set the desired duration time from 30S, 1H, 2H, ON or off by press again. If you press button for more than one second, the unit will power off by sounding "D-D". FIG 5

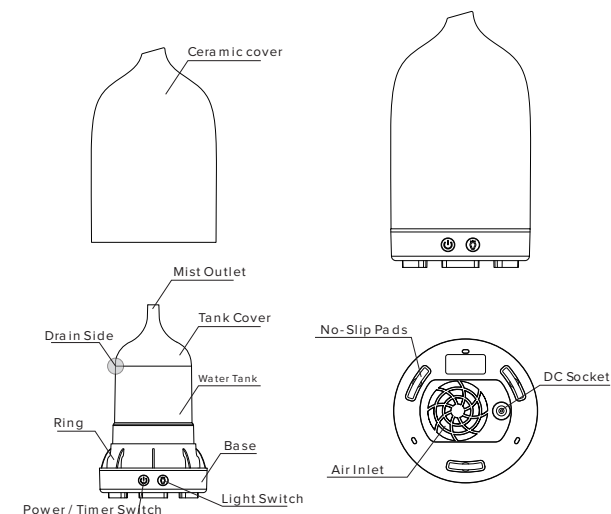
8. Press button to illuminate or switch off the led color. Press for the first time the color will change automatically. Short press again to fix single color, Long press button for 2 seconds the led will power off. FIG 5



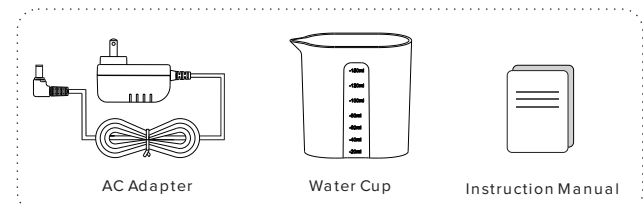
9. If the unit has not been used for a long time, please drain any remaining water, clear it and keep it in a dry and cool place. Clean it with neutral detergent before reusing. The unit is in power-off status when plug into the power supply. If the water level inside the unit runs too low, it will automatically stop operating even you activate it. Led light will be power off when the timer is up.

PALMBEACH
COLLECTION

Aromatherapy Diffuser Instruction Manual



Accessories



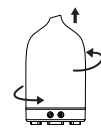
There may be difference between physical and photo, please refer to the physical.

English Manual

Maintenance

To ensure the long working life of this product, please keep scheduled maintenance. It's necessary to maintain the unit as below steps if it has been used for 5-6 times or 2-3 days.

Step 1: Disconnect the AC adapter from the power supply, take off the cover while keeping the unit stable on a line.

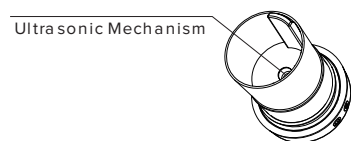


Step 2: If there's water left in the tank, pour it from the drain side. DO NOT pour from the air outlet side or else water may flow in the unit.



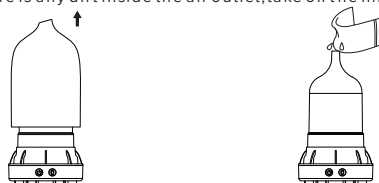
Step 3: Disconnect the DC plug from the unit, flow in the unit.

Step 4: Use a gentle diluted kitchen detergent on a damp cloth to remove any fragrance oil residue, ensuring no detergent remains. (IMPORTANT: DO NOT press heavily or scratch the ultrasonic mechanism in the water tank during cleaning.)



Step 5: Add water into the tank, activate the unit to operate for 30 minutes, clean it after pouring out the remaining water.

Step 6: If there is any dirt inside the air outlet, take off the inner cover to clean it.



Please DO NOT use chlorine, acidic or enzyme-based detergents for cleaning outside or inside of the unit. Please DO use neutral detergent.

English Manual

Precautions

To ensure the safety when you use the unit, please pay attention to the following points:

- ⊗ DO NOT Disassemble, alter or repair the unit. If the product needs repairing, please return to the retailer or the manufacturer.
- ⊗ DO NOT use as a medical respirator or the humidifier. purposefully inhaling mist could be harmful to your health.
- ⊗ DO NOT twist, puncture or stretch the cord of the power adapter, or place hot items on the wire or heavy pressure that may bend or squash the cord.
- ⊗ DO NOT use chlorine, acidic or enzyme-based detergents for cleaning outside or inside of the unit.
- ⊗ DO NOT use the product if the power lead has been damaged or the socket is loose.
- ⊗ DO NOT keep the adapter connected to the power supply during maintenance or adding water.
- ⊗ DO NOT USE the product when there is an abnormal odour or noise coming from the unit or the unit is overheating abnormally.
- ⊗ DO NOT connect or disconnect the AC adapter to the power supply.
- ⊗ DO NOT soak the unit in water, use in wet area such as bathroom or greenhouse.
- ⊗ DO NOT place nail, needle or other clutter near air outlet of the unit during.
- ⊗ DO NOT cover the unit or block the mist outlet or air inlet.
- ⊗ DO NOT use other inferior essential oil, that may damage the product, please use 100% pure essential oil. pets. pets.
- ⊗ DO NOT pour the remaining water from the air outlet side, please pour from drain side.
- ⊗ DO NOT take off the cover of the unit during operation.
- ⊗ DO NOT press the ultrasonic mechanism in the water tank heavily.
- ⊗ DO NOT place on electrical appliance such as computer, TV or audio equipment.
- ⊗ DO NOT keep the adapter connected to the power supply for a long unused time.
- ⊗ DO NOT use hot water or mineral water, or refill while the unit is in operation. Please use only cold tap water or distilled water. operation. Please use only.
- ⊗ DO NOT clean the dust on the AC adapter termly.
- ⊗ DO NOT place the unit on an unstable surface or move during operation.
- ⊗ DO NOT scratch the ultrasonic mechanism in the water tank.
- ⚠ WARNING: A nym isoperation caused by ignoring the manual or the precautions may damage the product, ever hurt the user.

English Manual

Warranty

1. Warranty service is provided by the manufacturer.

2. This product is guaranteed for a period of one year from the date of purchase, please fill the warranty card rightly.

3. Please read the manual instruction carefully before using the unit to ensure a correct operation.

4. If there is any defect under normal usage and in the guaranteed period, our company will repair, exchange or return the product.

5. This guarantee is not valid if the defect is due to accidental damage, misuse, neglect, alteration and any damage cause by using other accessories not included in the package.

6. Please retain your guarantee card and purchase receipt, service under guarantee is only provided upon presentation of the card and receipt.

7. Extra repairing service on any damage or defect not under guarantee can be provided by us, but we will charge.

Name		Tel	
Email		Date of purchase	
Address			
Product			
Item no.			
Remarks			

www.palmbeachcollection.com.au

