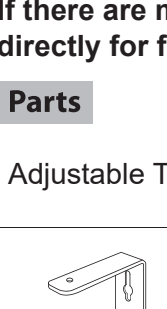
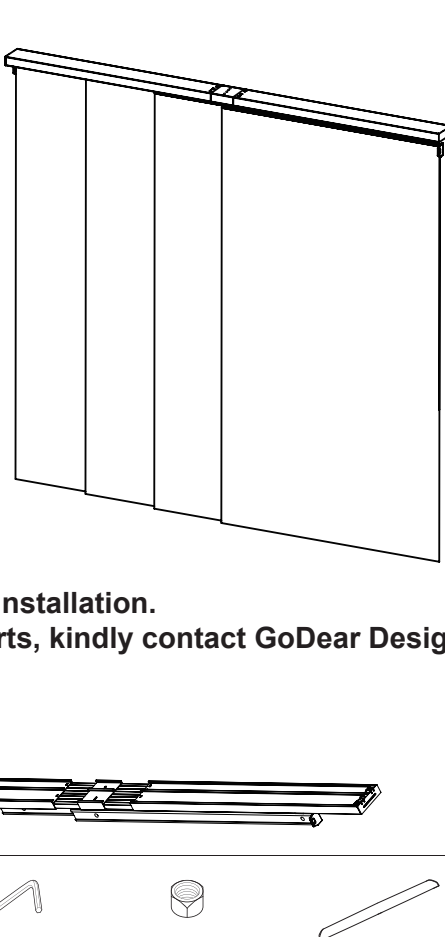


INSTRUCTION

Adjustable 4 Rail Panel System



Installation Guide

Please check all pieces before the installation. If there are missing or defective parts, kindly contact GoDear Design directly for further help.

Parts

Adjustable Track x1



"L" Bracket x5 (for wall mount)



Mounting Bracket x5



Allen Wrench x1



Nut x5



Anti-fray Clip x2



"L" Bracket Connector Screw x5



Wall Anchor x10



Bracket Screw x10



Set Screw x12



Slice x4



Wand x2



Bottom Bar x4



Panel Set x2 (each roll contains 2 panels)



Screw Marker x1



Bumper Pad x16

Prepare Tools



Drill



Screw Driver



Hammer



Tape Measure



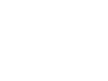
Level



Pliers



Scissors



Ladder



Screw Suggestion

Wood

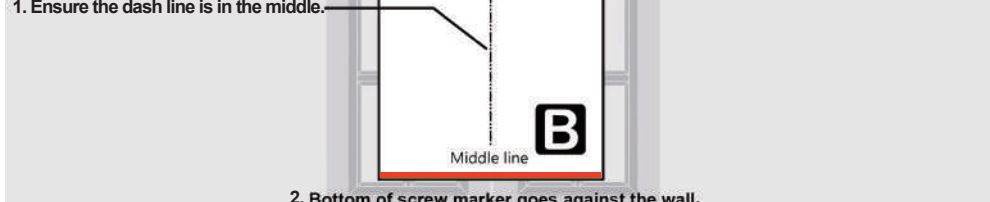


Cement

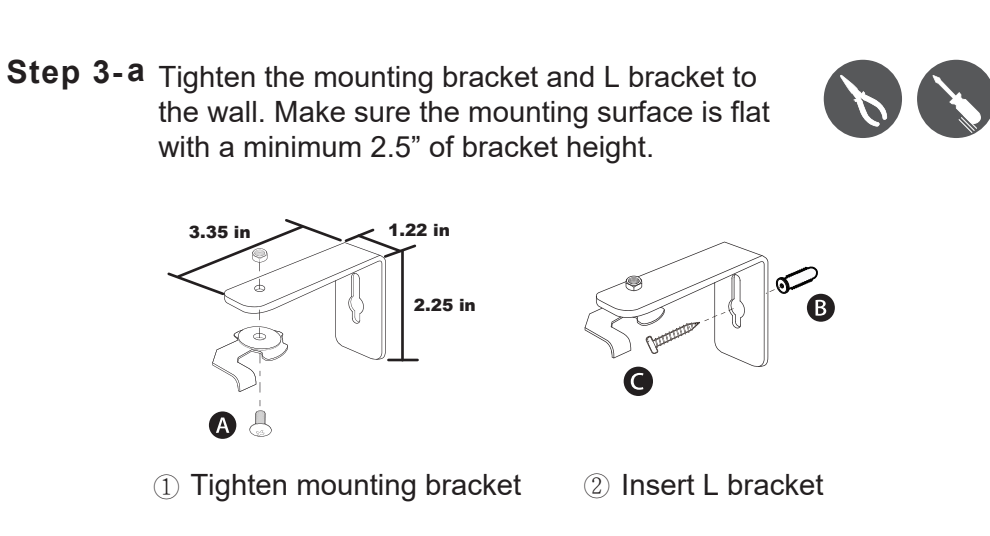
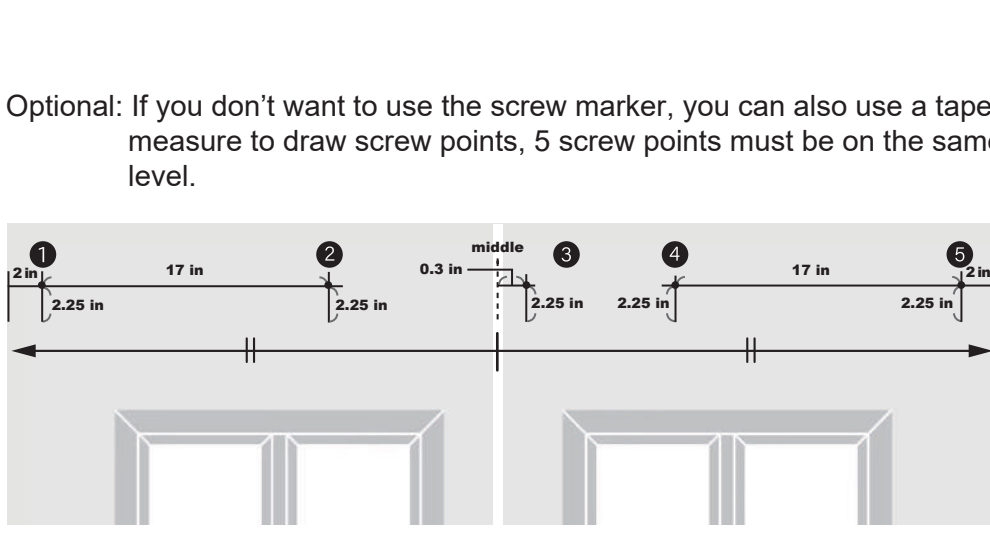


Wall Mount (Please see Step 1-b for ceiling mount)

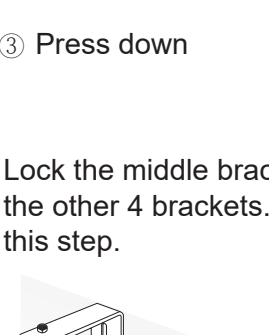
Step 1-a Extend the track to the width you need (maximum 86"). **DO NOT** over extend the track as it may cause to separate completely.



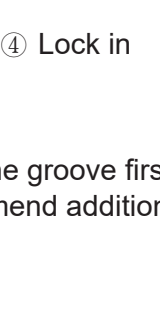
Step 2-a Cut down the cardboard B and use it to mark the central screw point. Align cardboard A against the left side and mark 2 screw points, vice versa.



Step 3-a Tighten the mounting bracket and L bracket to the wall. Make sure the mounting surface is flat with a minimum 2.5" of bracket height.



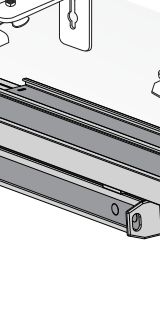
① Tighten mounting bracket



② Insert L bracket

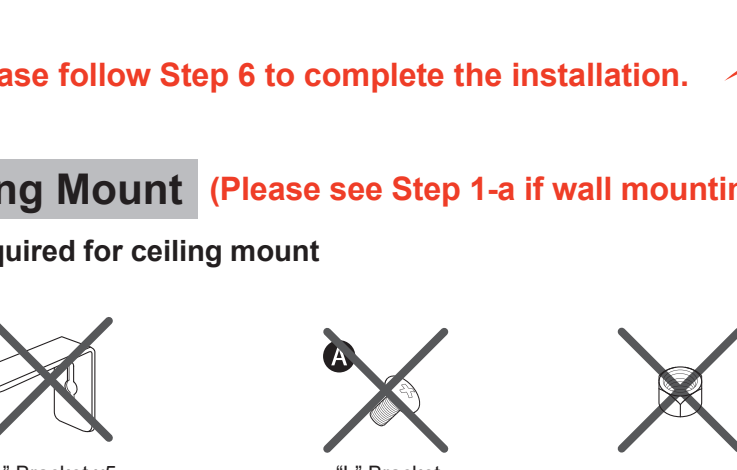


③ Press down

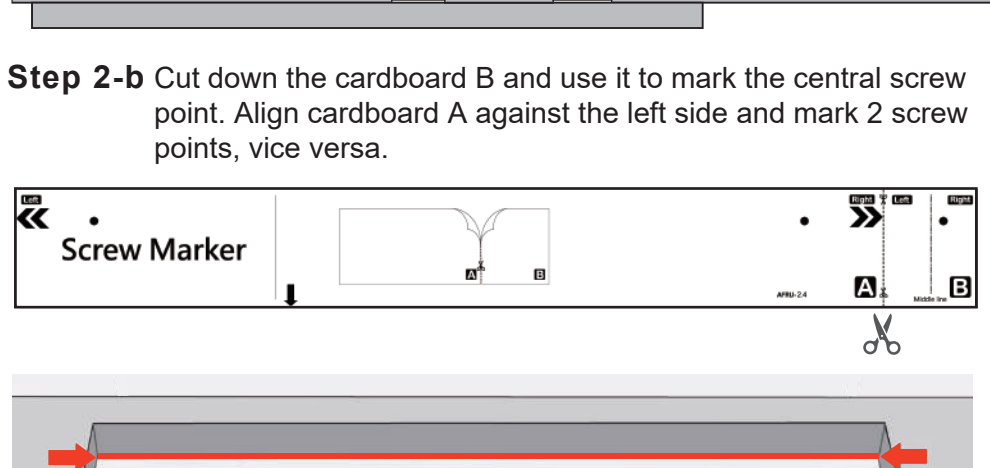


④ Lock in

Step 4-a Lock the middle bracket inside the groove first and then lock the other 4 brackets. We recommend additional hands to finish this step.



Step 5-a Make sure the mounting brackets are tightened inside the groove. **CAUTION!** All the brackets must be correctly and firmly installed.

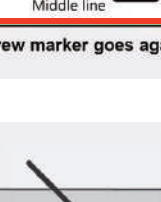


Ceiling Mount

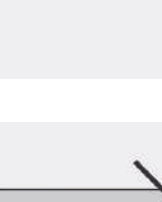
Not required for ceiling mount



"L" Bracket x5 (for wall mount)

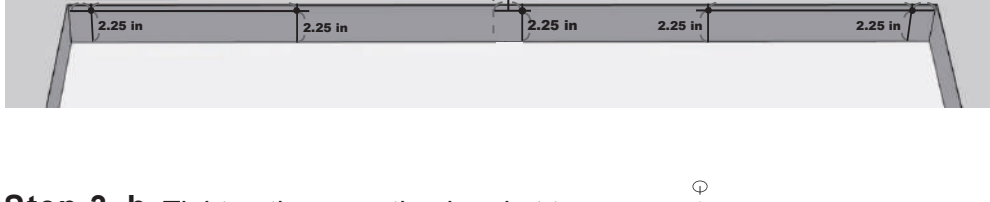


"L" Bracket Connector Screw x5

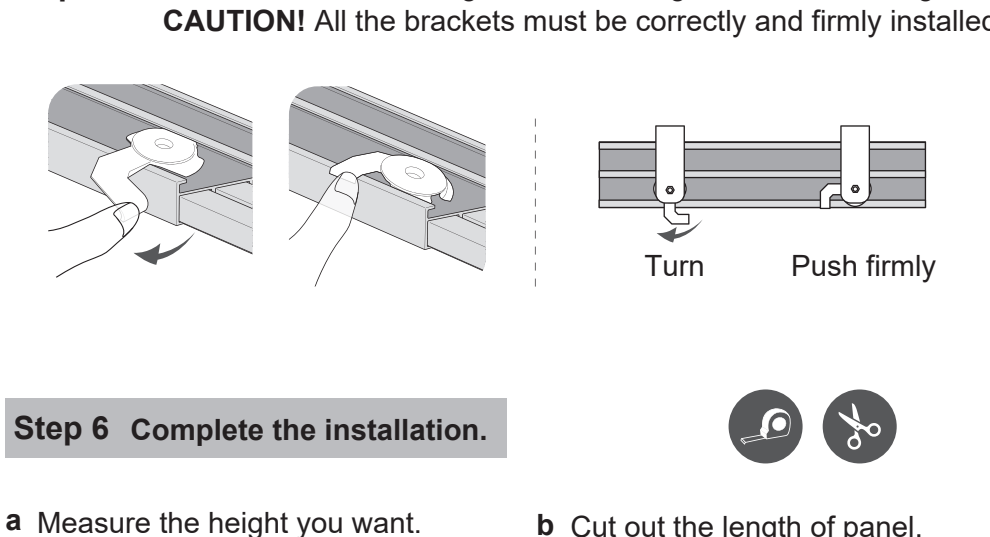
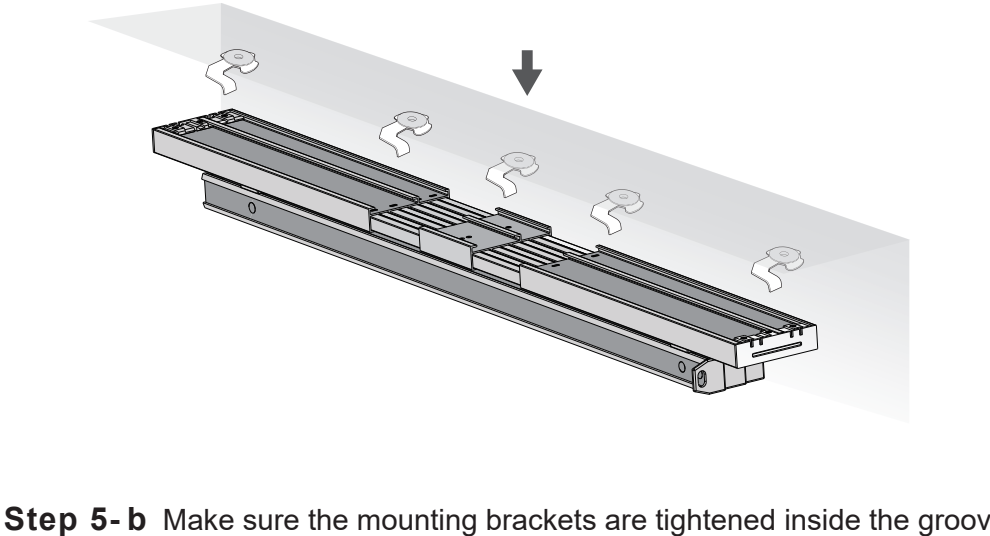
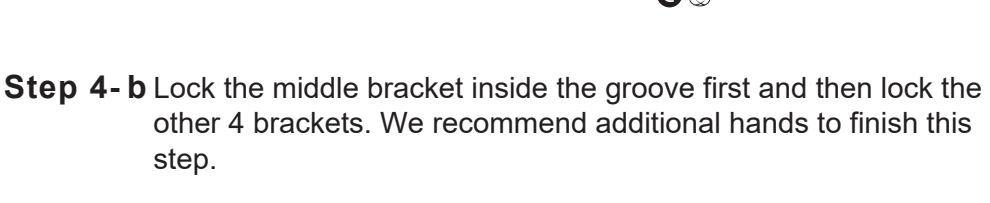


Nut x5

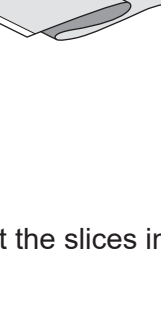
Step 1-b Extend the track to the width you need (maximum 86"). **DO NOT** over extend the track as it may cause to separate completely.



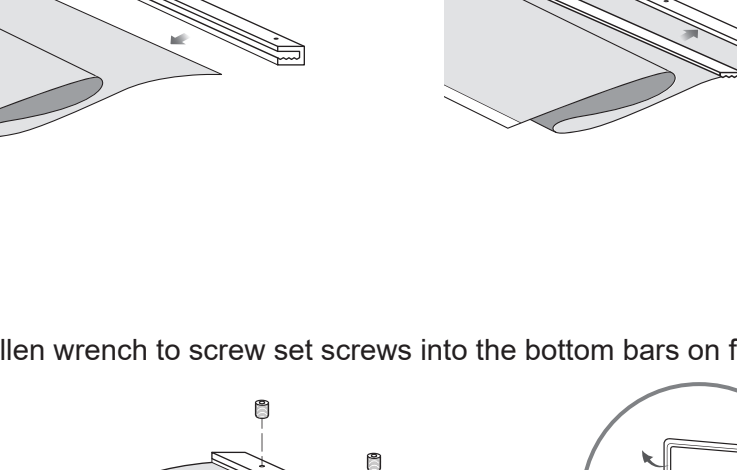
Step 2-b Cut down the cardboard B against the left side and mark 2 screw points, vice versa.



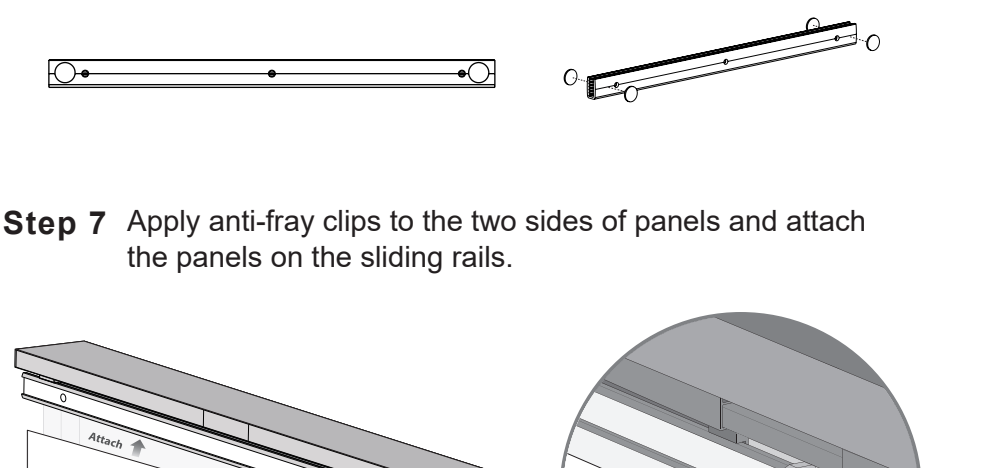
Step 3-b Tighten the mounting bracket to the ceiling. Make sure the mounting surface is flat with a minimum 2.5" of track depth.



Step 4-b Lock the middle bracket inside the groove first and then lock the other 4 brackets. We recommend additional hands to finish this step.

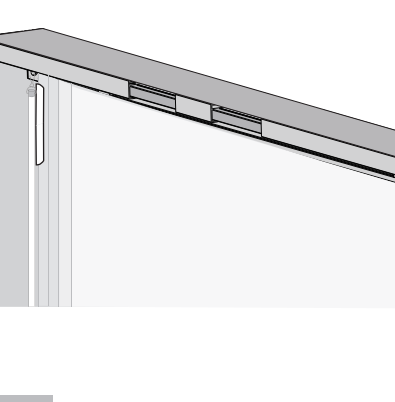


Step 5-b Make sure the mounting brackets are tightened inside the groove. **CAUTION!** All the brackets must be correctly and firmly installed.

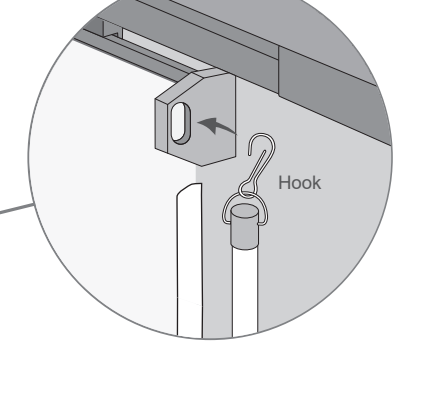


Step 6 Complete the installation.

a Measure the height you want.

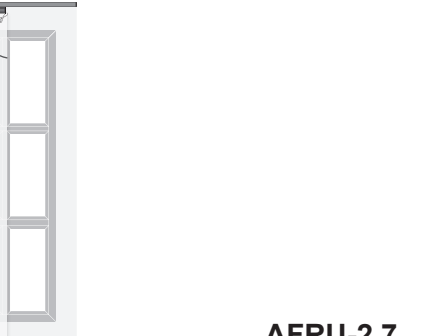


b Cut out the length of panel. **DO NOT** cut from velcro side.



c Insert the panels into bottom bars.

d Insert the slices into bottom bars.



e Use allen wrench to screw set screws into the bottom bars on flat surface.

f Attach 4 bumper pads on the front and back side of bottom bars.

Step 7 Apply anti-fray clips to the two sides of panels and attach the panels on the sliding rails.

Step 8 Hook the 2 wands to the leading and ending sliding rails.

Tips Use wands to open and close the sliding panels by 45 degrees.

AFRU-2.7