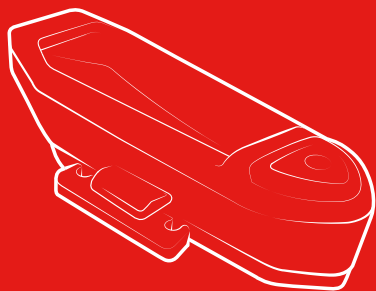




# ALPKIT

EASTWOOD | HATHERSAGE | AMBLESIDE



## TAU

KEEP ME SAFE FOR FUTURE REFERENCE

DATE: 01/03/18

Introducing your new Tau bike light; bright and very, very, (very), lightweight LED bike safety light: USB rechargeable with a wide beam to help you be safe and seen.

### IMPORTANT:

**Thank you for purchasing the Alpkit Tau Bike Light. Please curtail your excitement and do not use this product until you have read, understood, and complied with all the instructions and warnings contained within this manual.**

### SPECIFICATION

- Bulb: 1 x COB LED strip 270 beam
- Power source: 3.7 V 300 mAh Li-polymer
- Cable: Micro USB

	Brightness	Beam Intensity	Beam Distance	Burn Time*
Front High	65 lm	25 cd	10 m	4 h
Front Medium	30 lm	13 cd	7 m	8.5 h
Front Low	10 lm	5 cd	4 m	30 h
Front 6 & 3 Hz	NA	NA	NA	12 h
Rear High	20 lm	NA	6 m	3h
Rear Low	6 lm	NA	NA	16h
Rear 6 & 3 Hz	NA	NA	NA	18h
Pulse Flashing	NA	NA	NA	15h

- \*Burn time may be reduced in lower temperatures

### WARNING

- Do not shine torch directly into your eyes.
- Do not submerge.
- Do not disassemble or modify this product as it will invalidate your warranty.
- Recycle batteries responsibly.
- LED lights are not replaceable.

### CARE AND MAINTENANCE

- Clean with a damp cloth. To clean the elasticated straps, remove from the torch body and wash at a low temperature.
- Ensure that Tau is dry before storing, store in a dry place but don't leave it too long before you get out and start enjoying the dark again!

### SERVICE AND REPAIRS

If the torch does not work, check that the battery has been inserted the right way around and that it is not flat. Check that there is no water in the torch, dry thoroughly if there is and try again. Check contacts for signs of corrosion caused by the battery leaking or through damp. Clean contacts with a light emery cloth. If issues cannot be corrected using these instructions, contact Alpkit for advice.

### DISPOSAL AND RETURNS

Throwing batteries in the household bin can be hazardous to the environment and your health. You can recycle them by:

- Returning them to us to dispose of safely.
- Returning them to the store where you bought them to dispose of safely.
- Visiting [RecycleNow.com](https://www.recycle-now.com) to find your nearest battery bank.

Any torch with a WEEE icon (the crossed-out wheelie bin) cannot be put in household waste. Instead, either:

- Return to us to dispose of for you.
- Visit [RecycleNow.com](https://www.recycle-now.com) to find your nearest electricals recycling point.



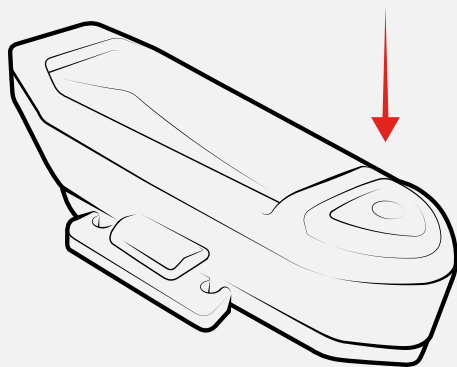
**THE ALPINE BOND**  
3 YEAR GUARANTEE

If this product does not meet your expectations upon delivery or does not live up to the demands placed upon it, please return it within 3 years of purchase for repair, replacement or refund. If the problem is our fault then we will do this to your satisfaction, if it's your fault we will help the best we can!

Email: [support@alpkit.com](mailto:support@alpkit.com)  
Phone: 01773 417007  
Website: [www.alpkit.com/support](http://www.alpkit.com/support)

## INSTRUCTIONS FOR USE

Press and hold the power button until the light comes on. Release the button, then press again to shimmy through the lighting modes. Depending on whether you have the front or rear lights, the cycles are as follows (overleaf).



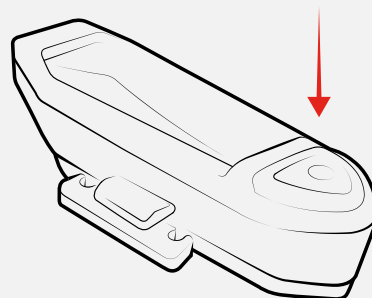
### Tau [Front] modes:



### Tau [Rear] modes:

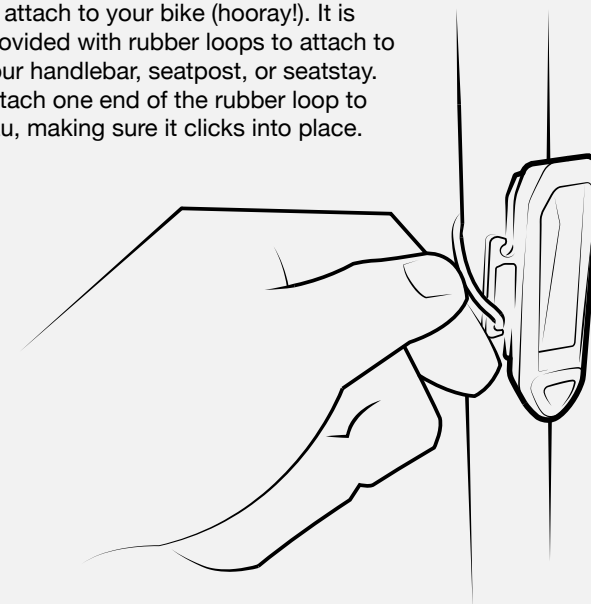


To switch the light off, press and hold the button until the light goes out.



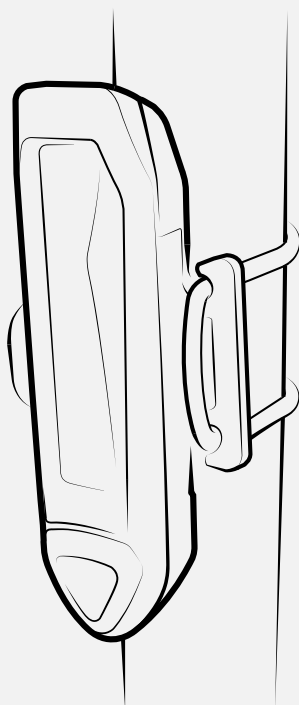
## FITTING TO YOUR BIKE

Tau does not need any special tools to attach to your bike (hooray!). It is provided with rubber loops to attach to your handlebar, seatpost, or seatstay. Attach one end of the rubber loop to Tau, making sure it clicks into place.



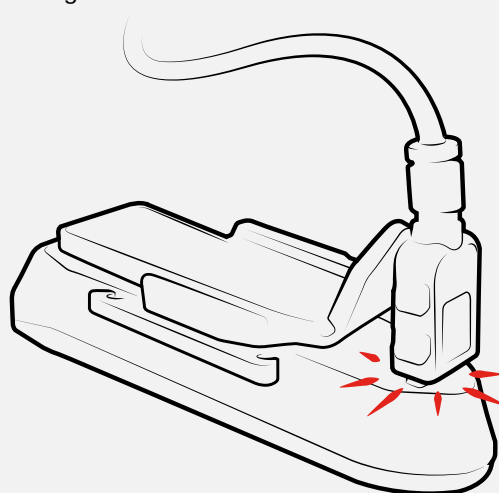
Stretch the rubber loop around the bike component and back onto your Tau. Check it is secured.

If you lose your rubber loops, contact us for replacements. If you're really in a pinch, try a hair band instead!



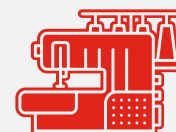
## CHANGE THE BATTERIES

Tau comes with a built in rechargeable battery. This can be recharged by connecting to a USB socket with the USB cable provided. The socket is on the rear of the lighting unit, under a small rubber flap. Leave around 70 minutes for a full recharge.



## CONTINUE THE JOURNEY

When your partnership with this product is over please don't leave it hidden in a cupboard, never to see another adventure. Wash it, pass it on, give to a friend, sell it, donate it to charity, make it into something else or recycle it and let someone else live their dream.



**REPAIR STATION**  
**HACK, PATCH & SEW**

In store service for your kit: [alokit.com/stores](http://alokit.com/stores)



**CONTINUUM PROJECT**

For more ideas on how you can extend the life of or donate your outdoor products visit: [alokit.com/continuum](http://alokit.com/continuum)