

**Turbo air**  
AIR CONDITIONER MANUFACTURER

4184 E. Conant St.  
Long Beach, CA 90808  
Tel. 888-900-1002  
Fax. 310-900-1088  
[www.turboairinc.net](http://www.turboairinc.net)

Project :

Model # :

Item # :

Qty :

Approval :

## Unit Cooler

**Model : LED147BE**



### ≡ FEATURES / BENEFITS ≡

- Blue anti-corrosion-fin increases the life span of the coil.
- Air-pass guard is located at the bottom of the coil to improve heat exchange rate.
- Easy to replace defrost heater. (LED model)
- Corrugated fin is used to increase heat exchanges rate by expanding the surface area.
- Even in confined space, all parts can be reached easily by opening the front cover.
- Location of power connector makes replacement of motor convenient.
- Seamless inner groove copper tube increases the heat exchange rate by reducing the space between the fin and copper tube.
- Venturi type distributor and precise orifice hole are used to minimize the pressure drop and maximize the freezing capacity respectively.
- Even in confined space, all parts can be reached easily by opening the front cover.
- Thermostat is installed to prevent over temperature on heater.
- Circuit opens automatically over 50°F.
- Parts available :
  - Expansion Valve (Sporlan) (Pre Mounted)
  - Solenoid Valve (Sporlan)
  - Thermostat (Johnson Control)
- The spiral fan guard enables cold air to be delivered efficiently and thoroughly.
- The protruding fan and motor placement substantially reduce vibration and noise.
- PSC fan motor, which prevents oil evaporation, is used for long life expectancy.
- EC Motor (optional) for high energy efficiency.
- Unique air flow system (patent pending) results in improved circulation within crowded walk-in cooler/freezer.
- Anti-oxidizing stainless steel mounting and bolts.

# Unit Cooler

## Model : LED147BE

### LED ELECTRIC DEFROST MODELS 60HZ. WITH EC MOTORS.

| Capacity<br>BTUH/Watts<br>10°F /6°C TD<br>-20°F / -29°C SST | Fan Data |     |
|---|----------|-----|
|   | CFM/m³H  | No. |
| 14700   | 1950     | 3   |

| EC Motor Data |            |       | Defrost Heater<br>(Total Amps) |              |              |
|---------------|------------|-------|--------------------------------|--------------|--------------|
| 230V 1Ph 60Hz |            |       |                                |              |              |
| HP            | Total Amps | Watts | Watts                          | 230/<br>1/60 | 230/<br>3/60 |
| 1/15          | 1.80       | 150   | 2700                           | 11.70        | 6.80         |

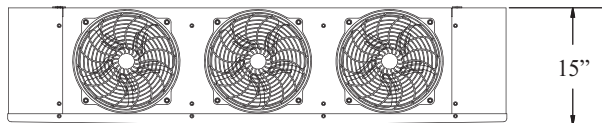
| Connections (Inches) |         |                    |         | Approx.<br>Net Wt.<br>Lbs |
|----------------------|---------|--------------------|---------|---------------------------|
| Coil Inlet           | Suction | External Equalizer | Drain   |                           |
| 1/2 OD               | 7/8 ID  | 1/4 OD             | 3/4 MPT | 72                        |

Design and specifications subject to change without notice

■ **WARRANTY : 1 Year Fan Motor and Parts Warranty**

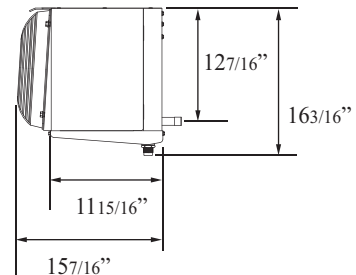
## PLAN VIEW

(unit : inch)

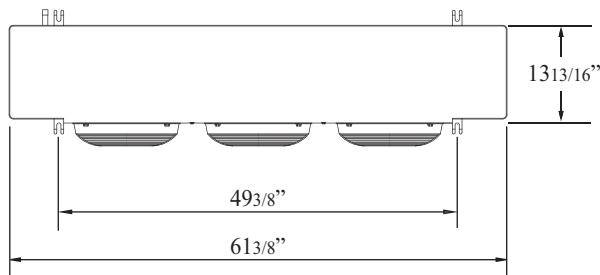


3/4" MPT (14NPS)  
Drain Connection

**FRONT VIEW**



**SIDE VIEW**



**TOP VIEW**



■ Toll Free : 888-900-1002