

Project :

Model # :

Item # :

Qty :

Approval :

## Condensing Unit

**Model : TH015XR404A2**



### ≡ FEATURES / BENEFITS ≡

- Blue anti-corrosion-fin increases the life span of the coil.
- Seamless inner groove copper tube increases the heat exchange rate by reducing the space between the fin and copper tube.
- Highest quality compressor in the world.
- Copeland
- Head pressure control stabilizes the freezing of liquid line, minimizes formation of flash gas to increase efficiency of the system, and prevents compressor damage by controlling high pressure.
- Experienced engineers have designed the system for maximum efficiency.
- Fan Blades : Specifically matched with motors and coil for maximum air movement and cooling.
- Control box is designed for easy installation.
- Low pressure control is adjustable.
- All the parts are compliant with industry standards and interchangeable with readily available parts.
- Wiring : Easily accessible. Compressor comes with a wiring harness that is manufactured with connections that will not come loose with vibration.
- Control box and service valves are located outside for easy service.
- Base : Heavy duty steel. Legs are 2-1/6" tall
- Cabinet : Prepainted with galvanized body. Protects against corrosion.
- All products carry UL, cUL, ISO 9001 approvals.

# Condensing Unit

## Model : TH015XR404A2

### PERFORMANCE CHART

R404A

|               | 0°F(SST) | -5°F | -10°F | -15°F | -20°F | -25°F | -30°F | -40°F |
|---------------|----------|------|-------|-------|-------|-------|-------|-------|
| 90°F(AMBIENT) | 10664    | 9460 | 8300  | 7174  | 6098  | 5008  | 4101  | -     |
| 95°F          | 9992     | 9013 | 7896  | 6811  | 5666  | 4726  | 3706  | -     |
| 100°F         | 9320     | 8268 | 7226  | 6218  | 5248  | 4265  | 3469  | -     |
| 110°F         | 7976     | 7070 | 6162  | 5171  | 4346  | 3585  | 2846  | -     |

### SPECIFICATION

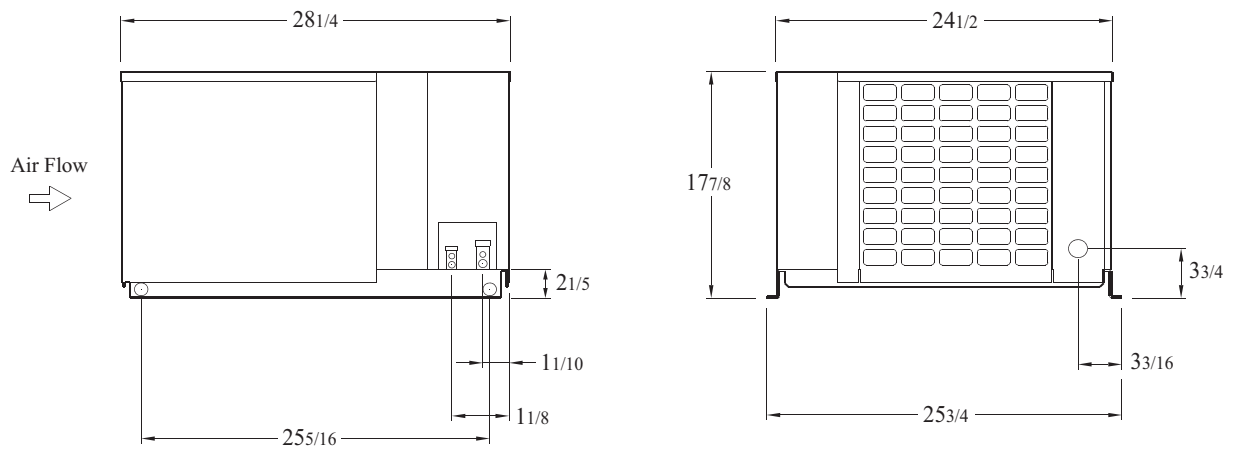
|                            |                                |
|----------------------------|--------------------------------|
| Compressor                 | CF06K6E-PFV                    |
| Line Size                  | 3/8" Liquid 5/8" Suction       |
| Refrigerant (Receiver 90%) | 6 lbs                          |
| Fan Data                   | 1Fan(950CFM)                   |
| Dimensions                 | 24.49(D) x 28.27(W) x 17.87(H) |
| Net Weight                 | 170 lbs                        |
| Power Supply               | 208-230/1ph/60hz               |
| Compressor Amp             | 11.4(RLA), 59.2(LRA)           |
| MCA/MOPD                   | 15/25                          |
| Sound dBA                  | 71                             |

Design and specifications subject to change without notice

- **WARRANTY :** 1 Year Compressor Warranty (4 Year extended warranty available)  
1 Year Fan Motor and Parts Warranty

### PLAN VIEW

(unit : inch)



Ver.20180605



▪ Toll Free : 888-900-1002

REFRIGERATOR MANUFACTURER  
**Turbo air**

REFRIGERATION SYSTEM  
**GERMAN KNIFE**

REFRIGERATION SYSTEM  
**RADIANCE**

REFRIGERATION SYSTEM  
**Turbo air**

REFRIGERATION SYSTEM  
**TEXAKING**