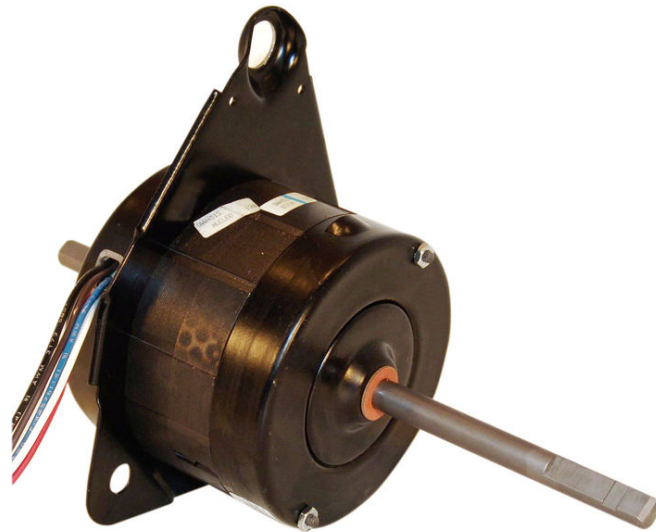


PRODUCT INFORMATION PACKET



Model No: OWW4514
Catalog No: OWW4514
1/4 HP OEM Replacement Motor, 1330/1200 RPM, 2 Speed, 208-230 Volts, 42 Frame, TEAO
HVAC/R OEM Replacement Motors



Regal and Century are trademarks of Regal Beloit Corporation or one of its affiliated companies.
©2020 Regal Beloit Corporation, All Rights Reserved. MC017097E

The REGAL logo is a grey rectangular box with the word 'REGAL' in white, bold, sans-serif capital letters. It is positioned on a blue background with a halftone dot pattern that tapers to the right.

REGAL



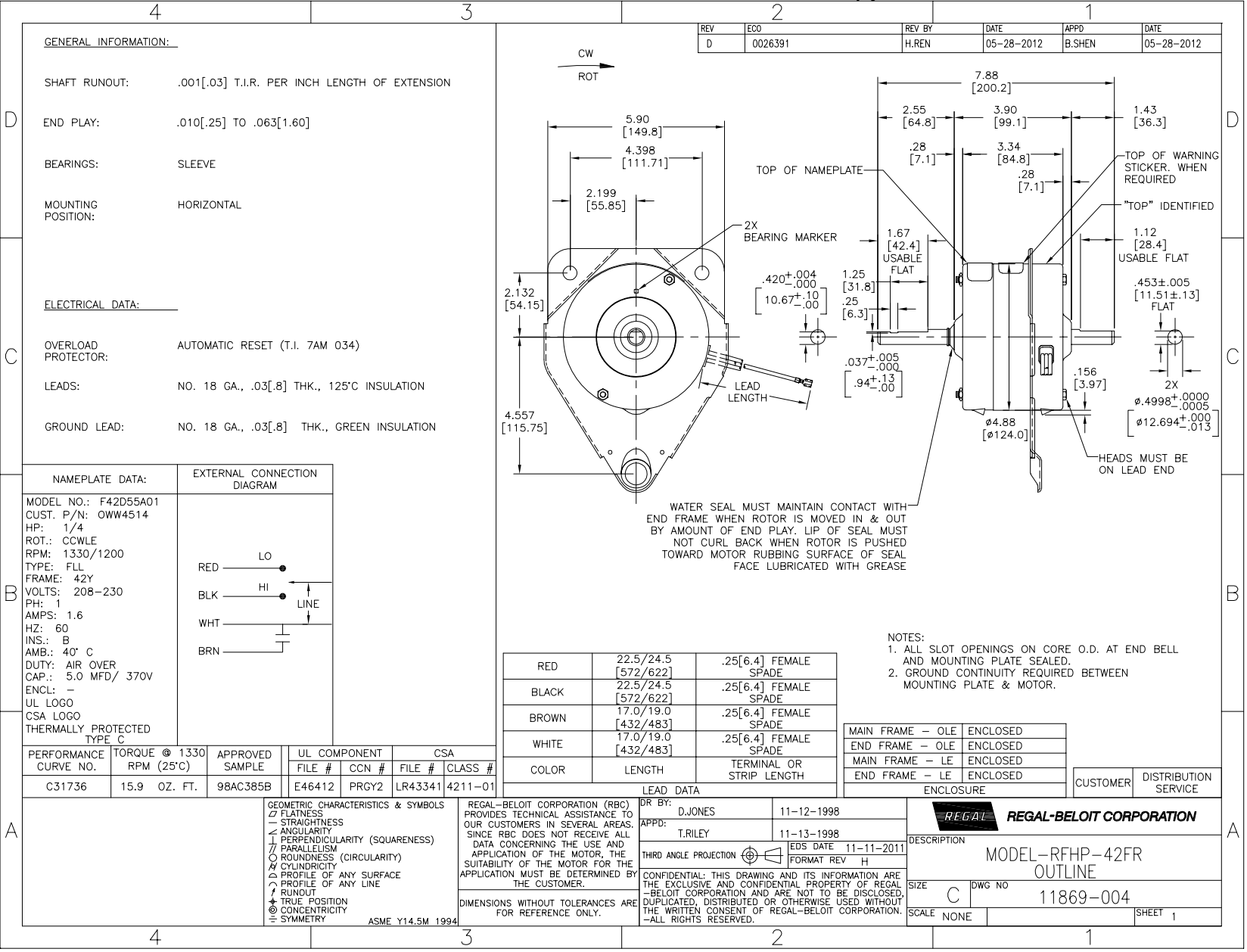
Nameplate Specifications

Output HP	1/4 Hp	Output KW	0.19 kW
Frequency	60 Hz	Voltage	208-230 V
Current	1.9 A	Speed	1330/1200 rpm
Service Factor	1	Phase	1
Duty	Air Over	Insulation Class	B
Frame	42Y	Enclosure	Totally Enclosed Air Over
Thermal Protection	Automatic	Ambient Temperature	40 °C
UL	Recognized	CSA	Y
CE	N		

Technical Specifications

Electrical Type	Permanent Split Capacitor	Starting Method	Across The Line
Poles	4	Rotation	Counterclockwise Lead End
Mounting	Plate	Motor Orientation	Horizontal
Drive End Bearing	Sleeve	Opp Drive End Bearing	Sleeve
Frame Material	Na	Shaft Type	Flat
Overall Length	7.91 in	Shaft Diameter	0.500 in
Shaft Extension	2.8X.5X1.7 in		
Connection Drawing	7554A73F01	Outline Drawing	11869-004

This is an uncontrolled document once printed or downloaded and is subject to change without notice. Date Created:27/05/2020



REV	ECO	REV BY	DATE	APPD	DATE
D	0026391	H.REN	05-28-2012	B.SHEN	05-28-2012

GENERAL INFORMATION:

SHAFT RUNOUT: .001[.03] T.I.R. PER INCH LENGTH OF EXTENSION

END PLAY: .010[.25] TO .063[1.60]

BEARINGS: SLEEVE

MOUNTING POSITION: HORIZONTAL

ELECTRICAL DATA:

OVERLOAD PROTECTOR: AUTOMATIC RESET (T.I. 7AM 034)

LEADS: NO. 18 GA., .03[.8] THK., 125°C INSULATION

GROUND LEAD: NO. 18 GA., .03[.8] THK., GREEN INSULATION

NAMEPLATE DATA:	EXTERNAL CONNECTION DIAGRAM
MODEL NO.: F42D55A01 CUST. P/N: OWW4514 HP: 1/4 ROT.: COWLE RPM: 1330/1200 TYPE: FLL FRAME: 42Y VOLTS: 208-230 PH: 1 AMPS: 1.6 HZ: 60 INS.: B AMB.: 40° C DUTY: AIR OVER CAP.: 5.0 MFD/ 370V ENCL: - UL LOGO CSA LOGO THERMALLY PROTECTED TYPE C	

RED	22.5/24.5 [572/622]	.25[6.4] FEMALE SPADE
BLACK	22.5/24.5 [572/622]	.25[6.4] FEMALE SPADE
BROWN	17.0/19.0 [432/483]	.25[6.4] FEMALE SPADE
WHITE	17.0/19.0 [432/483]	.25[6.4] FEMALE SPADE
COLOR	LENGTH	TERMINAL OR STRIP LENGTH

- NOTES:
- ALL SLOT OPENINGS ON CORE O.D. AT END BELL AND MOUNTING PLATE SEALED.
 - GROUND CONTINUITY REQUIRED BETWEEN MOUNTING PLATE & MOTOR.

MAIN FRAME - OLE	ENCLOSED
END FRAME - OLE	ENCLOSED
MAIN FRAME - LE	ENCLOSED
END FRAME - LE	ENCLOSED

CUSTOMER	DISTRIBUTION SERVICE
----------	----------------------

PERFORMANCE CURVE NO.	TORQUE @ 1330 RPM (25°C)	APPROVED SAMPLE	UL COMPONENT FILE #	CCN #	CSA FILE #	CLASS #
C31736	15.9 OZ. FT.	98AC385B	E46412	PRGY2	LR43341	4211-01

GEOMETRIC CHARACTERISTICS & SYMBOLS

- FLATNESS
- STRAIGHTNESS
- ANGULARITY
- PERPENDICULARITY (SQUARENESS)
- PARALLELISM
- ROUNDNESS (CIRCULARITY)
- CYLINDRICITY
- PROFILE OF ANY SURFACE
- PROFILE OF ANY LINE
- RUNOUT
- TRUE POSITION
- CONCENTRICITY
- SYMMETRY

ASME Y14.5M 1994

REGAL-BELOIT CORPORATION (RBC) PROVIDES TECHNICAL ASSISTANCE TO OUR CUSTOMERS IN SEVERAL AREAS. SINCE RBC DOES NOT RECEIVE ALL DATA CONCERNING THE USE AND APPLICATION OF THE MOTOR, THE SUITABILITY OF THE MOTOR FOR THE APPLICATION MUST BE DETERMINED BY THE CUSTOMER.

DIMENSIONS WITHOUT TOLERANCES ARE FOR REFERENCE ONLY.

DR BY: D.JONES 11-12-1998

APPD: T.RILEY 11-13-1998

EDS DATE 11-11-2011

FORMAT REV H

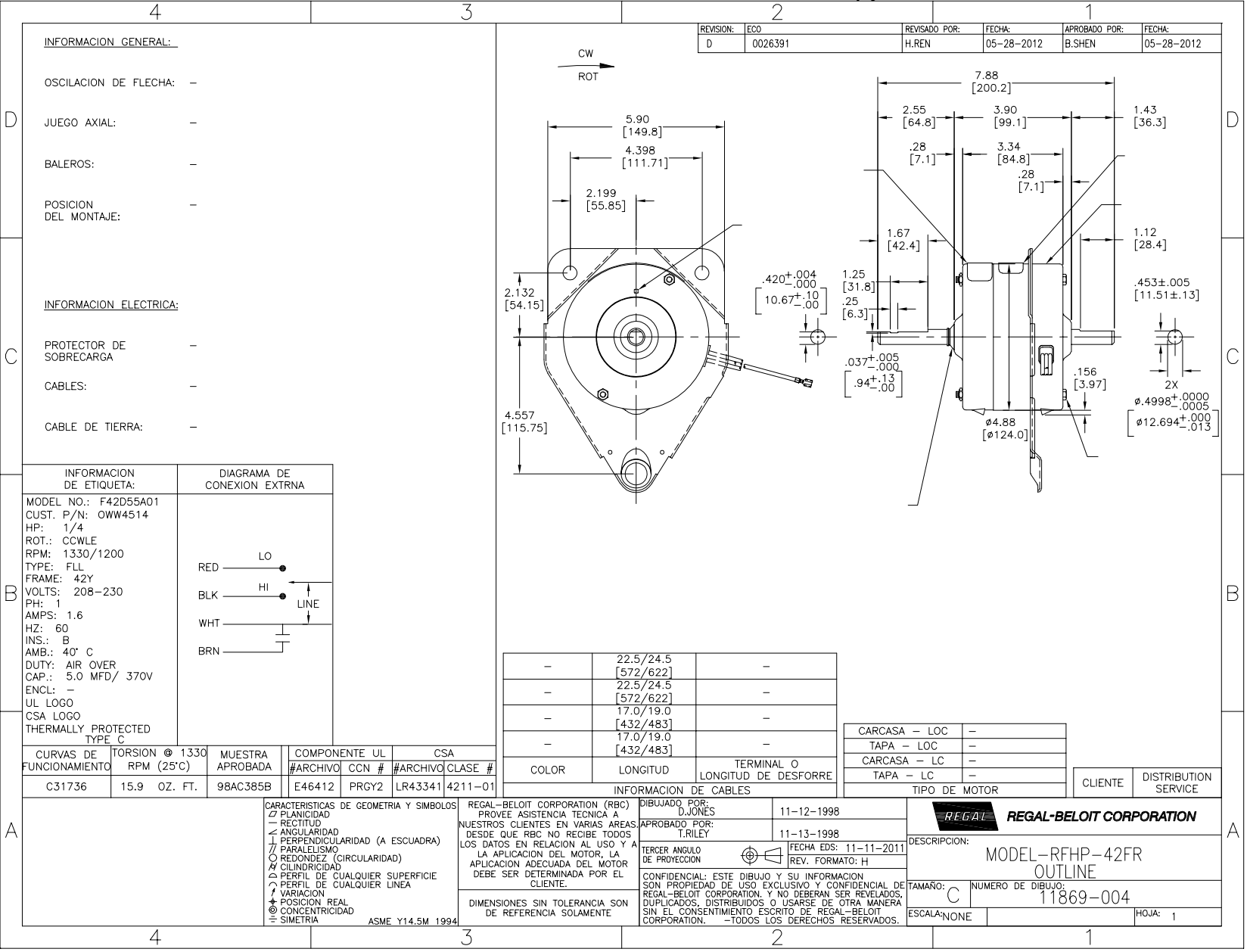
THIRD ANGLE PROJECTION

REGAL-BELOIT CORPORATION

DESCRIPTION: MODEL-RFHP-42FR OUTLINE

SIZE: C DWG NO: 11869-004

SCALE: NONE SHEET 1



REVISION: ECO	REVISADO POR: H.REN	FECHA: 05-28-2012	APROBADO POR: B.SHEN	FECHA: 05-28-2012
D	0026391			

INFORMACION GENERAL:

OSCILACION DE FLECHA: -
 JUEGO AXIAL: -
 BALEROS: -
 POSICION DEL MONTAJE: -

INFORMACION ELECTRICA:

PROTECTOR DE SOBRECARGA -
 CABLES: -
 CABLE DE TIERRA: -

INFORMACION DE ETIQUETA:	DIAGRAMA DE CONEXION EXTRNA
MODEL NO.: F42D55A01 CUST. P/N: OWW4514 HP: 1/4 ROT.: CCWLE RPM: 1330/1200 TYPE: FLL FRAME: 42Y VOLTS: 208-230 PH: 1 AMPS: 1.6 HZ: 60 INS.: B AMB.: 40° C DUTY: AIR OVER CAP.: 5.0 MFD/ 370V ENCL: - UL LOGO CSA LOGO THERMALLY PROTECTED TYPE C	

-	22.5/24.5	-
-	[572/622]	-
-	22.5/24.5	-
-	[572/622]	-
-	17.0/19.0	-
-	[432/483]	-
-	17.0/19.0	-
-	[432/483]	-

CARCASA - LOC	-
TAPA - LOC	-
CARCASA - LC	-
TAPA - LC	-

INFORMACION DE CABLES

COLOR	LONGITUD	TERMINAL O LONGITUD DE DESFORRE
-	-	-

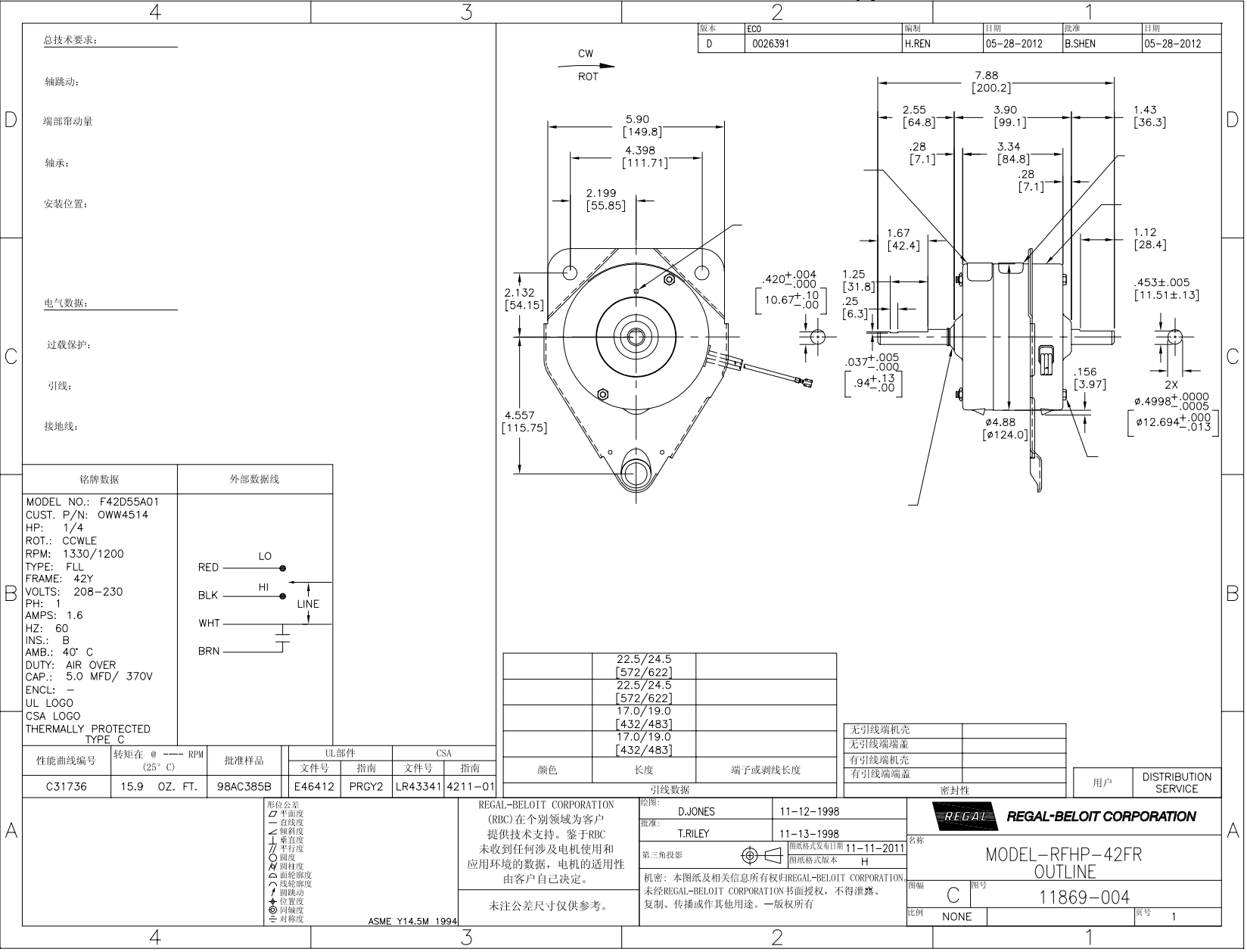
TIPO DE MOTOR

CLIENTE	DISTRIBUTION SERVICE
DESCRIPCION:	MODEL-RFHP-42FR OUTLINE
TAMAÑO:	C
NUMERO DE DIBUJO:	11869-004
ESCALA:	NONE
HOJA:	1

CARACTERISTICAS DE GEOMETRIA Y SIMBOLOS ▽ PLANICIDAD ⊥ RECTITUD ∠ ANGULARIDAD ⊥ PERPENDICULARIDAD (A ESCUADRA) // PARALELISMO ○ REDONDEZ (CIRCULARIDAD) ∅ CILINDRICIDAD ~ PERFIL DE CUALQUIER SUPERFICIE ~ PERFIL DE CUALQUIER LINEA ↑ VARIACION ★ POSICION REAL ⊙ CONCENTRICIDAD = SIMETRIA	REGAL-BELOIT CORPORATION (RBC) PROVEE ASISTENCIA TECNICA A NUESTROS CLIENTES EN VARIAS AREAS. DESDE QUE RBC NO RECIBE TODOS LOS DATOS EN RELACION AL USO Y A LA APLICACION DEL MOTOR, LA APLICACION ADECUADA DEL MOTOR DEBE SER DETERMINADA POR EL CLIENTE. DIMENSIONES SIN TOLERANCIA SON DE REFERENCIA SOLAMENTE
---	--

DIBUJADO POR: D.JONES 11-12-1998 APROBADO POR: T.RILEY 11-13-1998 TERCER ANGULO DE PROYECCION CONFIDENCIAL: ESTE DIBUJO Y SU INFORMACION SON PROPIEDAD DE USO EXCLUSIVO Y CONFIDENCIAL DE REGAL-BELOIT CORPORATION, Y NO DEBERAN SER REVELADOS, DUPLICADOS, DISTRIBUIDOS O USARSE DE OTRA MANERA SIN EL CONSENTIMIENTO ESCRITO DE REGAL-BELOIT CORPORATION. -TODOS LOS DERECHOS RESERVADOS.	REGAL-BELOIT CORPORATION REGAL-BELOIT CORPORATION
--	--

CURVAS DE TORSION @ 1330 RPM (25°C)	MUESTRA APROBADA	COMPONENTE UL	CSA
C31736	15.9 OZ. FT.	98AC385B	E46412 PRGY2 LR43341 4211-01



版本	ECO	编制	日期	批准	日期
D	0026391	H.REN	05-28-2012	B.SHEN	05-28-2012

总技术要求: _____

轴跳动: _____

端部窜动量 _____

轴承: _____

安装位置: _____

电气数据: _____

过载保护: _____

引线: _____

接地线: _____

铭牌数据	外部数据线
MODEL NO.: F42D55A01 CUST. P/N: OWW4514 HP: 1/4 ROT.: CCWLE RPM: 1330/1200 TYPE: FLL FRAME: 42Y VOLTS: 208-230 PH: 1 AMPS: 1.6 HZ: 60 INS.: B AMB.: 40° C DUTY: AIR OVER CAP.: 5.0 MFD/ 370V ENCL: - UL LOGO CSA LOGO THERMALLY PROTECTED TYPE C	

22.5/24.5	[572/622]	
22.5/24.5	[572/622]	
17.0/19.0	[432/483]	
17.0/19.0	[432/483]	
颜色	长度	端子或剥线长度

无引线端机壳	
无引线端盖	
有引线端机壳	
有引线端盖	

性能曲线编号	转矩在 @ (25° C) RPM	批准样品	UL部件		CSA	
			文件号	指南	文件号	指南
C31736	15.9 OZ. FT.	98AC385B	E46412	PRGY2	LR43341	4211-01

形位公差 □ 平面度 一 直线度 < 圆跳动 ⊥ 垂直度 // 平行度 ⊙ 圆度 ⊘ 圆柱度 Ⓜ 面轮廓度 Ⓝ 线轮廓度 ↗ 圆跳动 ↖ 位置度 ⊕ 同轴度 ⊖ 对称度	ASME Y14.5M 1994
---	------------------

REGAL-BELOIT CORPORATION (RBC) 在个别领域为客户提供技术支持。鉴于RBC未收到任何涉及电机使用和应用环境的数据，电机的适用性由客户自己决定。

未注公差尺寸仅供参考。

绘图: D.JONES	11-12-1998
批准: T.RILEY	11-13-1998
第三角投影	图版格式发布日期 11-11-2011 图版格式版本 H
机密: 本图纸及相关信息所有权归REGAL-BELOIT CORPORATION。未经REGAL-BELOIT CORPORATION书面授权, 不得泄露、复制、传播或作其他用途。一版权所有	

名称	MODEL-RFHP-42FR OUTLINE
图幅	C 图号 11869-004
比例	NONE 页号 1