

PRODUCT INFORMATION PACKET



Model No: ORM1016

Catalog No: ORM1016

1/5-1/8 HP OEM Replacement Motor, 1075 RPM, 2 Speed, 208-230 Volts, 48 Frame, OAO
HVAC/R OEM Replacement Motors



Regal and Century are trademarks of Regal Beloit Corporation or one of its affiliated companies.
©2020 Regal Beloit Corporation, All Rights Reserved. MC017097E

The REGAL logo consists of the word 'REGAL' in a bold, white, sans-serif font, set against a dark grey, trapezoidal background that tapers to the right. This logo is positioned on a blue and black halftone patterned background that runs vertically down the right side of the page.

REGAL



Nameplate Specifications

Output HP	1/5-1/8 Hp	Output KW	0.15 kW
Frequency	60 Hz	Voltage	208-230 V
Current	1.1 A	Speed	1075 rpm
Service Factor	1	Phase	1
Duty	Air Over	Insulation Class	B
Frame	48Y	Enclosure	Open Air Over
Thermal Protection	Automatic	Ambient Temperature	60 °C
UL	Recognized	CSA	Y
CE	N		

Technical Specifications

Electrical Type	Permanent Split Capacitor	Starting Method	Across The Line
Poles	6	Rotation	Reversible
Mounting	Extended Studs	Motor Orientation	Vertical Shaft Down
Drive End Bearing	Sleeve	Opp Drive End Bearing	Sleeve
Frame Material	Rolled Steel	Shaft Type	Double Flat
Overall Length	10.12 in	Frame Length	3.13 in
Shaft Diameter	0.500 in	Shaft Extension	5.5 in
Connection Drawing	614131-109	Outline Drawing	ORM1016-S01

This is an uncontrolled document once printed or downloaded and is subject to change without notice. Date Created:06/11/2020

GENERAL INFORMATION:

SHAFT RUNOUT: .001[.025] T.I.R. PER INCH LENGTH OF EXTENSION
 END PLAY: .010[.254] TO .063[1.600]
 BEARINGS: SLEEVE
 MOUNTING POSITION: VERTICAL SHAFT DOWN

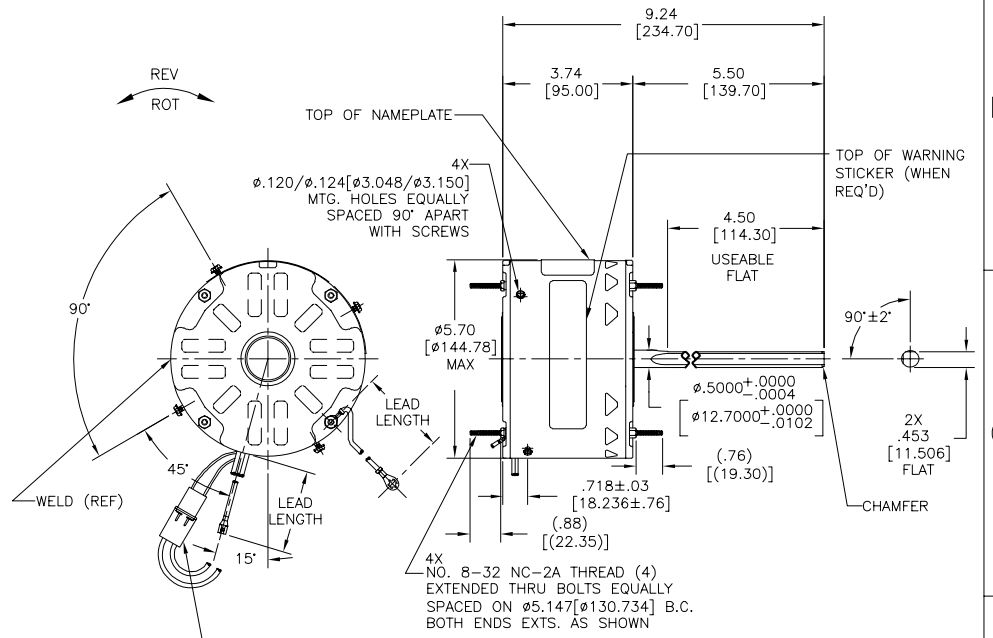
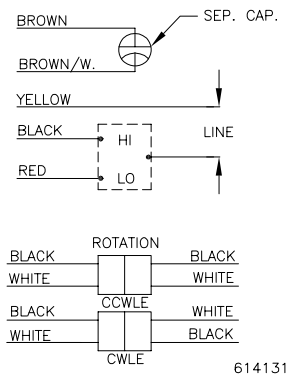
ELECTRICAL DATA:

OVERLOAD PROTECTOR: AUTOMATIC RESET (SENSATA 7AM 036)
 LEADS: NO. 18 GA., .06[1.52] THK. 125°C INSULATION
 GROUND LEAD: NO. 18 GA., .03[0.76] THK., (GREEN) INSULATION

NAMEPLATE DATA:

MODEL NO.: F48SD6L12
 CUST. P/N: []
 HP: 1/8
 ROT: REVERSIBLE
 RPM: 1075/2 SPD.
 TYPE: UF
 FRAME: 48Y
 VOLTS: 208-230
 PH: 1
 AMPS: 1.1 (1.4 MAX)
 HZ: 60
 INS: B
 AMB: 60°C
 DUTY: AIR OVER
 CAP.: 5 MFD/370 VAC
 ENCL: SEMI ENCL
 UL LOGO
 CSA LOGO
 THERMALLY PROTECTED

EXTERNAL CONNECTION DIAGRAM



NOTE:
 1. DISTRIBUTION PART NUMBER: ORM1016
 GRAINGER PART NUMBER: 4UY70

REGAL-BELOIT CORPORATION (RBC) PROVIDES TECHNICAL ASSISTANCE TO OUR CUSTOMERS IN SEVERAL AREAS. SINCE RBC DOES NOT RECEIVE ALL DATA CONCERNING THE USE AND APPLICATION OF THE MOTOR, THE SUITABILITY OF THE MOTOR FOR THE APPLICATION MUST BE DETERMINED BY THE CUSTOMER.
 DIMENSIONS WITHOUT TOLERANCES ARE FOR REFERENCE ONLY.

GREEN(GRD)	12/13	#10 EYELET
BLACK/WHITE	3/5	REVERSING PLUG
BROWN	72/74	.25[6.35] FEMALE SPADE
BROWN/WHITE	72/74	.25[6.35] FEMALE SPADE
RED	48/50	.25[6.35] FEMALE SPADE
YELLOW	48/50	.25[6.35] FEMALE SPADE
BLACK	48/50	.25[6.35] FEMALE SPADE
COLOR	LENGTH	TERMINAL OR STRIP LENGTH

MAIN FR.-OLE	OPEN
END FR.-OLE	OPEN
MAIN FR.-LE	CLOSED
END FR.-LE	CLOSED

PERFORMANCE CURVE NO.	TORQUE @1625 RPM (25°C)	APPROVED SAMPLE
C23481	16.1 OZ. FT.	EX11538

UL COMPONENT		CSA	
FILE#	GUIDE#	FILE#	GUIDE#
E46412	PRGY2	LR43341	260-Ø-0

LEAD DATA

DRAWING REVISION	REVISION BY	DATE
A	P.ROJAS	07-30-2014
ECO-0056263	T.REYES	07-30-2014
ECO DESCRIPTION	SEE ECO	

ENCLOSURE

DRAWN BY: P.ROJAS	DATE: 07-30-2014
APPROVED BY: T.REYES	DATE: 07-30-2014
REFERENCE: C	THIRD ANGLE PROJECTION
MATERIAL: C	PROCESS/FINISH: 1
SIZE (DWG NO): C	OR M1016

Regal Beloit America, Inc.
 MODEL-RFHP-48FR
 OUTLINE

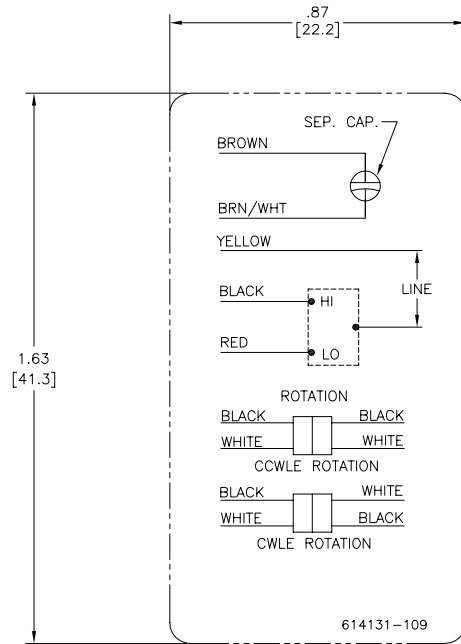
4

3

2

1

REV	ECO	REV BY	DATE	APPD	DATE
A	0010481	CZ	11-20-2009	TR	11-20-2009



NOTES:

1. FOR USE WITH 614129 NAMEPLATE BLANK
2. - - - - - INDICATES DIMENSION LIMITS
3. DIE TO BE MADE FROM MASTER SUPPLIED BY A. O. SMITH CORPORATION
4. DIE MUST PRODUCE A LEGIBLE IMPRESSION.

GEOMETRIC CHARACTERISTICS & SYMBOLS	
	FLATNESS
	STRAIGHTNESS
	ANGULARITY
	PERPENDICULARITY (SQUARENESS)
	PARALLELISM
	ROUNDNESS (CIRCULARITY)
	CYLINDRICITY
	PROFILE OF ANY SURFACE
	PROFILE OF ANY LINE
	RUNOUT
	TRUE POSITION
	CONCENTRICITY
	SYMMETRY

UNLESS OTHERWISE SPECIFIED DIM. TOLERANCES ARE AS FOLLOWS:
INCH ± 0.1 ± 0.02 ± 0.005 ± 0.0005
mm ± 0.5 ± 0.13 ± 0.013
ANG. ± 50 DEG
REMOVE BURRS & BREAK SHARP EDGES:
INCH .003-0.015 mm 0.1-0.4
CORNER FILLETS TO:
INCH .020 mm 0.5
MACHINE SURFACES:
INCH 125 mm 3.2
METRIC DIMS. SHOWN IN [BRACKETS]

DR BY:	CZ	11-20-2009
APPD:	TR	11-20-2009
THIRD ANGLE PROJECTION		EDS DATE 02-22-2008 FORMAT REV F
CONFIDENTIAL: THIS DRAWING AND ITS INFORMATION ARE THE EXCLUSIVE AND CONFIDENTIAL PROPERTY OF A.O. SMITH CORP. AND ARE NOT TO BE DISCLOSED, DUPLICATED, DISTRIBUTED OR OTHERWISE USED WITHOUT THE WRITTEN CONSENT OF A.O. SMITH CORP.		
-ALL RIGHTS RESERVED. ASME Y14.5M 1994		

	ELECTRICAL PRODUCTS COMPANY A DIVISION OF A. O. SMITH CORPORATION
DESCRIPTION CONN DIAGRAM-EXTERNAL	
SIZE C	DWG NO 614131-109
SCALE NONE	SHEET 1

4

3

2

1

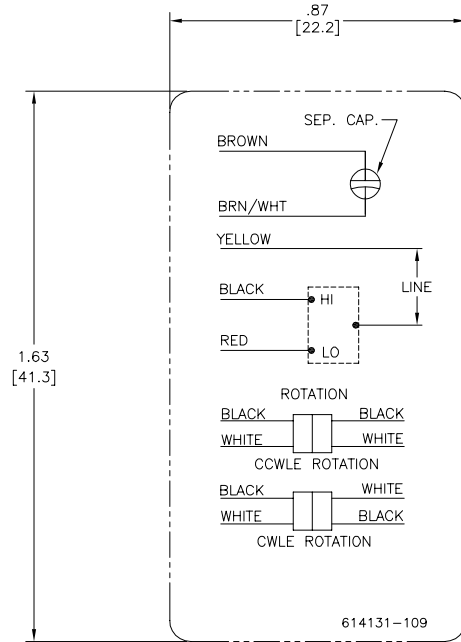
4

3

2

1

REVISION:	ECO	REVISADO POR:	FECHA:	APROBADO POR:	FECHA:
A	0010481	CZ	11-20-2009	TR	11-20-2009



NOTES:

- FOR USE WITH 614129 NAMEPLATE BLANK
- INDICATES DIMENSION LIMITS
- DIE TO BE MADE FROM MASTER SUPPLIED BY A. O. SMITH CORPORATION
- DIE MUST PRODUCE A LEGIBLE IMPRESSION.

CARACTERÍSTICAS DE GEOMETRÍA Y SIMBOLOS ▽ PLANICIDAD — RECTITUD ∠ ANGULARIDAD ⊥ PERPENDICULARIDAD (A ESQUADRA) // PARALELISMO R REDONDEZ (CIRCULARIDAD) H CILINDRICIDAD ⊙ PERFIL DE CUALQUIER SUPERFICIE ⊖ PERFIL DE CUALQUIER LINEA † VARIACION ⊕ POSICION REAL ⊙ CONCENTRICIDAD ≡ SIMETRIA

DIBUJADO POR:	CZ	11-20-2009
APROBADO POR:	TR	11-20-2009
TERCER ANGULO DE PROYECCION		FECHA EDS: 02-22-2008 REV. FORMATO: F
CONFIDENCIAL: ESTE DIBUJO Y SU INFORMACION SON PROPIEDAD DE USO EXCLUSIVO Y CONFIDENCIAL DE A.O.SMITH CORP. Y NO DEBERAN SER REVELADOS. DUPLICADOS, DISTRIBUIDOS O USARSE DE OTRA MANERA SIN EL CONSENTIMIENTO ESCRITO DE A.O. SMITH CORP. -TODOS LOS DERECHOS RESERVADOS.ASME Y14.5M 1994		

ELECTRICAL PRODUCTS COMPANY A DIVISION OF A. O. SMITH CORPORATION
DESCRIPCION: CONN DIAGRAM-EXTERNAL
TAMANO: C NUMERO DE DIBUJO: 614131-109
ESCALA: NONE HOJA: 1

4

3

2

1

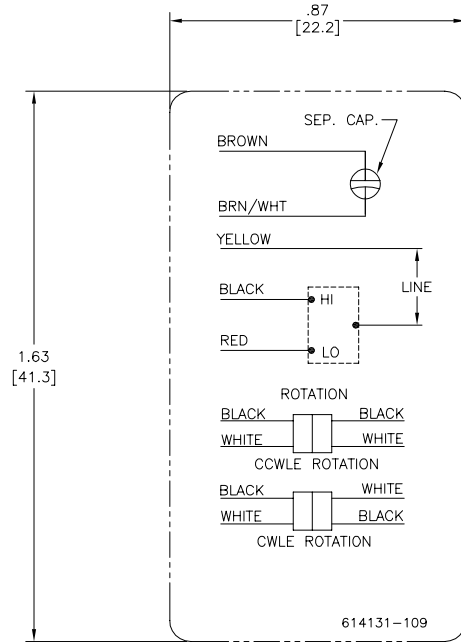
4

3

2

1

??	ECO	??	??	??
A	0010481	CZ	11-20-2009	TR



NOTES:

1. FOR USE WITH 614129 NAMEPLATE BLANK
2. --- INDICATES DIMENSION LIMITS
3. DIE TO BE MADE FROM MASTER SUPPLIED BY A. O. SMITH CORPORATION
4. DIE MUST PRODUCE A LEGIBLE IMPRESSION.

□???

??	CZ	11-20-2009
??	TR	11-20-2009
????	⊕	02-22-2008
		F
??	A.O.SMITH?????	
??	A.O.SMITH????????????????	
??	????-????	

ACSmith **ELECTRICAL PRODUCTS COMPANY**
Innovation has a name. A DIVISION OF A. O. SMITH CORPORATION

CONN DIAGRAM-EXTERNAL

C 614131-109

NONE 1

ASME Y14.5M 1994

4

3

2

1