

PRODUCT INFORMATION PACKET



Model No: OMC6517
Catalog No: OMC6517
1/5 HP OEM Replacement Motor, 1075 RPM, 208-230 Volts, 42 Frame, OAO
HVAC/R OEM Replacement Motors



Regal and Century are trademarks of Regal Beloit Corporation or one of its affiliated companies.
©2020 Regal Beloit Corporation, All Rights Reserved. MC017097E

The REGAL logo, consisting of the word "REGAL" in a bold, white, sans-serif font, set within a dark grey, trapezoidal shape that tapers to the right.



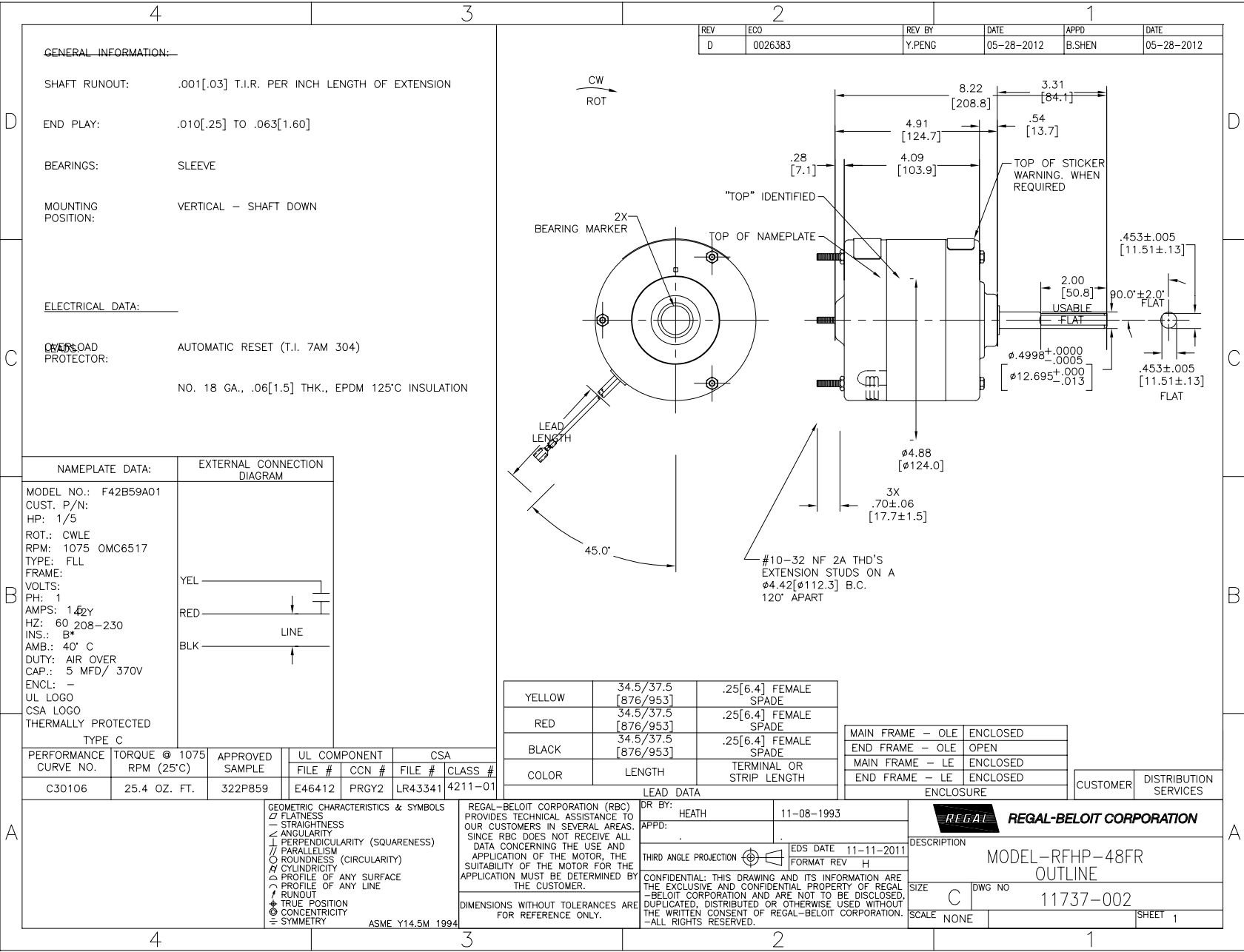
Nameplate Specifications

Output HP	1/5 Hp	Output KW	0.15 kW
Frequency	60 Hz	Voltage	208-230 V
Current	1.5 A	Speed	1075 rpm
Service Factor	1	Phase	1
Duty	Air Over	Insulation Class	B
Frame	42Y	Enclosure	Open Enclosed
Thermal Protection	Automatic	Ambient Temperature	40 °C
UL	Recognized	CSA	Y
CE	N		

Technical Specifications

Electrical Type	Permanent Split Capacitor	Starting Method	Across The Line
Poles	6	Rotation	Clockwise Lead End
Mounting	Extended Studs	Motor Orientation	Vertical Shaft Down
Drive End Bearing	Sleeve	Opp Drive End Bearing	Sleeve
Frame Material	Na	Shaft Type	Flat
Overall Length	11.53 in	Shaft Diameter	0.500 in
Shaft Extension	3.9 in		
Outline Drawing	11737-002	Connection Drawing	7573A96F01

This is an uncontrolled document once printed or downloaded and is subject to change without notice. Date Created:06/11/2020



REV	ECO	REV BY	DATE	APPD	DATE
D	0026383	Y.PENG	05-28-2012	B.SHEN	05-28-2012

GENERAL INFORMATION:

SHAFT RUNOUT: .001[.03] T.I.R. PER INCH LENGTH OF EXTENSION

END PLAY: .010[.25] TO .063[1.60]

BEARINGS: SLEEVE

MOUNTING POSITION: VERTICAL - SHAFT DOWN

ELECTRICAL DATA:

OVERLOAD PROTECTOR: AUTOMATIC RESET (T.I. 7AM 304)

NO. 18 GA., .06[1.5] THK., EPDM 125°C INSULATION

NAMEPLATE DATA:	EXTERNAL CONNECTION DIAGRAM
MODEL NO.: F42B59A01 CUST. P/N: HP: 1/5 ROT.: CWLE RPM: 1075 OMC6517 TYPE: FLL FRAME: VOLTS: PH: 1 AMPS: 1.42Y HZ: 60 208-230 INS.: B* AMB.: 40° C DUTY: AIR OVER CAP.: 5 MFD/ 370V ENCL: - UL LOGO CSA LOGO THERMALLY PROTECTED TYPE C	

COLOR	LENGTH	TERMINAL OR STRIP LENGTH
YELLOW	34.5/37.5 [876/953]	.25[6.4] FEMALE SPADE
RED	34.5/37.5 [876/953]	.25[6.4] FEMALE SPADE
BLACK	34.5/37.5 [876/953]	.25[6.4] FEMALE SPADE

MAIN FRAME - OLE	ENCLOSED
END FRAME - OLE	OPEN
MAIN FRAME - LE	ENCLOSED
END FRAME - LE	ENCLOSED

PERFORMANCE CURVE NO.	TORQUE @ 1075 RPM (25°C)	APPROVED SAMPLE	UL COMPONENT	CSA
C30106	25.4 OZ. FT.	322P859	E46412 PRGY2	LR43341 4211-01

GEOMETRIC CHARACTERISTICS & SYMBOLS

- FLATNESS
- STRAIGHTNESS
- ∠ ANGULARITY
- ⊥ PERPENDICULARITY (SQUARENESS)
- ∥ PARALLELISM
- ROUNDNESS (CIRCULARITY)
- ⊘ CYLINDRICITY
- ⊖ PROFILE OF ANY SURFACE
- ⊖ PROFILE OF ANY LINE
- ⊖ ROUNDT
- ⊖ TRUE POSITION
- ⊖ CONCENTRICITY
- ⊖ SYMMETRY

ASME Y14.5M 1994

REGAL-BELOIT CORPORATION (RBC) PROVIDES TECHNICAL ASSISTANCE TO OUR CUSTOMERS IN SEVERAL AREAS. SINCE RBC DOES NOT RECEIVE ALL DATA CONCERNING THE USE AND APPLICATION OF THE MOTOR, THE SUITABILITY OF THE MOTOR FOR THE APPLICATION MUST BE DETERMINED BY THE CUSTOMER.

DIMENSIONS WITHOUT TOLERANCES ARE FOR REFERENCE ONLY.

DR BY: HEATH 11-08-1993

APPD:

EDS DATE 11-11-2011
FORMAT REV H

THIRD ANGLE PROJECTION

CONFIDENTIAL: THIS DRAWING AND ITS INFORMATION ARE THE EXCLUSIVE AND CONFIDENTIAL PROPERTY OF REGAL-BELOIT CORPORATION AND ARE NOT TO BE DISCLOSED, DUPLICATED, DISTRIBUTED OR OTHERWISE USED WITHOUT THE WRITTEN CONSENT OF REGAL-BELOIT CORPORATION. ALL RIGHTS RESERVED.

REGAL-BELOIT CORPORATION

DESCRIPTION: MODEL-RFHP-48FR OUTLINE

SIZE: C DWG NO: 11737-002

SCALE: NONE SHEET 1

