

PRODUCT INFORMATION PACKET



Model No: OEV1006
Catalog No: OEV1006
1/12 HP OEM Replacement Motor, 1050 RPM, 208-230 Volts, 42 Frame, TEAO
HVAC/R OEM Replacement Motors



Regal and Century are trademarks of Regal Beloit Corporation or one of its affiliated companies.
©2020 Regal Beloit Corporation, All Rights Reserved. MC017097E





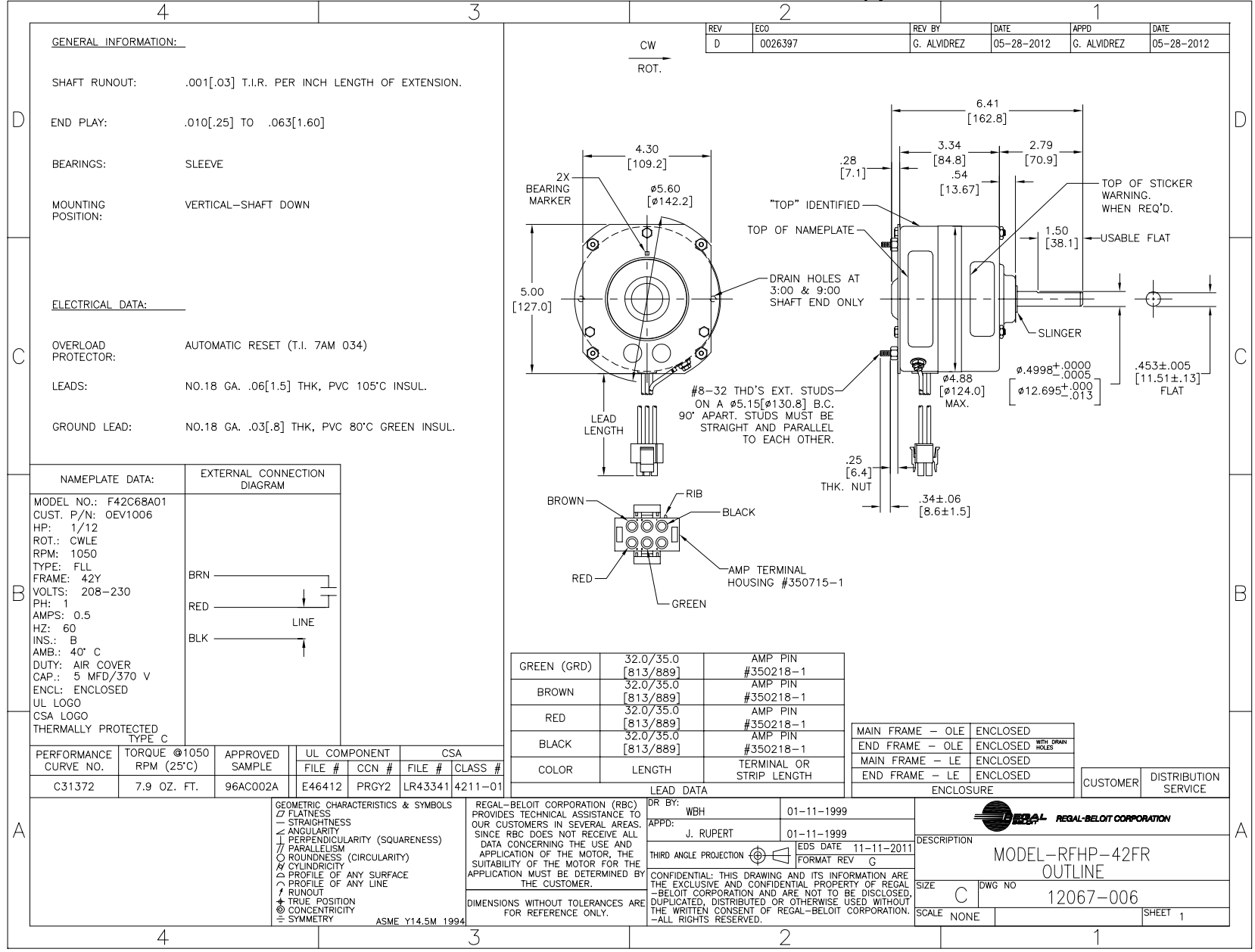
Nameplate Specifications

Output HP	1/12 Hp	Output KW	0.06 kW
Frequency	60 Hz	Voltage	208-230 V
Current	0.5 A	Speed	1050 rpm
Service Factor	1	Phase	1
Duty	Air Over	Insulation Class	B
Frame	42Y	Enclosure	Totally Enclosed
Thermal Protection	Automatic	Ambient Temperature	40 °C
UL	Recognized	CSA	Y
CE	N		

Technical Specifications

Electrical Type	Permanent Split Capacitor	Starting Method	Across The Line
Poles	6	Rotation	Clockwise Lead End
Mounting	Plate	Motor Orientation	Horizontal
Drive End Bearing	Sleeve	Opp Drive End Bearing	Sleeve
Frame Material	Na	Shaft Type	Flat
Overall Length	6.66 in	Shaft Diameter	0.500 in
Shaft Extension	2.8 in		
Outline Drawing	12067-006	Connection Drawing	7556A61F01

This is an uncontrolled document once printed or downloaded and is subject to change without notice. Date Created:22/09/2020



REV	ECO	REV BY	DATE	APPD	DATE
D	0026397	G. ALVIDREZ	05-28-2012	G. ALVIDREZ	05-28-2012

GENERAL INFORMATION:

SHAFT RUNOUT: .001[.03] T.I.R. PER INCH LENGTH OF EXTENSION.

END PLAY: .010[.25] TO .063[1.60]

BEARINGS: SLEEVE

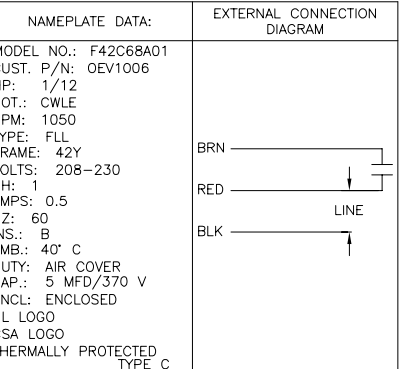
MOUNTING POSITION: VERTICAL-SHAFT DOWN

ELECTRICAL DATA:

OVERLOAD PROTECTOR: AUTOMATIC RESET (T.I. 7AM 034)

LEADS: NO.18 GA. .06[1.5] THK, PVC 105°C INSUL.

GROUND LEAD: NO.18 GA. .03[.8] THK, PVC 80°C GREEN INSUL.



GREEN (GRD)	32.0/35.0 [813/889]	AMP PIN #350218-1
BROWN	32.0/35.0 [813/889]	AMP PIN #350218-1
RED	32.0/35.0 [813/889]	AMP PIN #350218-1
BLACK	32.0/35.0 [813/889]	AMP PIN #350218-1
COLOR	LENGTH	TERMINAL OR STRIP LENGTH

MAIN FRAME - OLE	ENCLOSED
END FRAME - OLE	ENCLOSED WITH DRAIN HOLES
MAIN FRAME - LE	ENCLOSED
END FRAME - LE	ENCLOSED

PERFORMANCE CURVE NO.	TORQUE @1050 RPM (25°C)	APPROVED SAMPLE	UL COMPONENT FILE #	CCN #	CSA FILE #	CLASS #
C31372	7.9 OZ. FT.	96AC002A	E46412	PRGY2	LR43341	4211-01

GEOMETRIC CHARACTERISTICS & SYMBOLS

- FLATNESS
- STRAIGHTNESS
- ANGULARITY
- PERPENDICULARITY (SQUARENESS)
- PARALLELISM
- ROUNDNESS (CIRCULARITY)
- CYLINDRICITY
- PROFILE OF ANY SURFACE
- RUNOUT
- TRUE POSITION
- CONCENTRICITY
- SYMMETRY

REGAL-BELOIT CORPORATION (RBC) PROVIDES TECHNICAL ASSISTANCE TO OUR CUSTOMERS IN SEVERAL AREAS. SINCE RBC DOES NOT RECEIVE ALL DATA CONCERNING THE USE AND APPLICATION OF THE MOTOR, THE SUITABILITY OF THE MOTOR FOR THE APPLICATION MUST BE DETERMINED BY THE CUSTOMER.

DIMENSIONS WITHOUT TOLERANCES ARE FOR REFERENCE ONLY.

ASME Y14.5M 1994

DR BY: WBH 01-11-1999

APPD: J. RUPERT 01-11-1999

EDS DATE 11-11-2011

FORMAT REV G

THIRD ANGLE PROJECTION

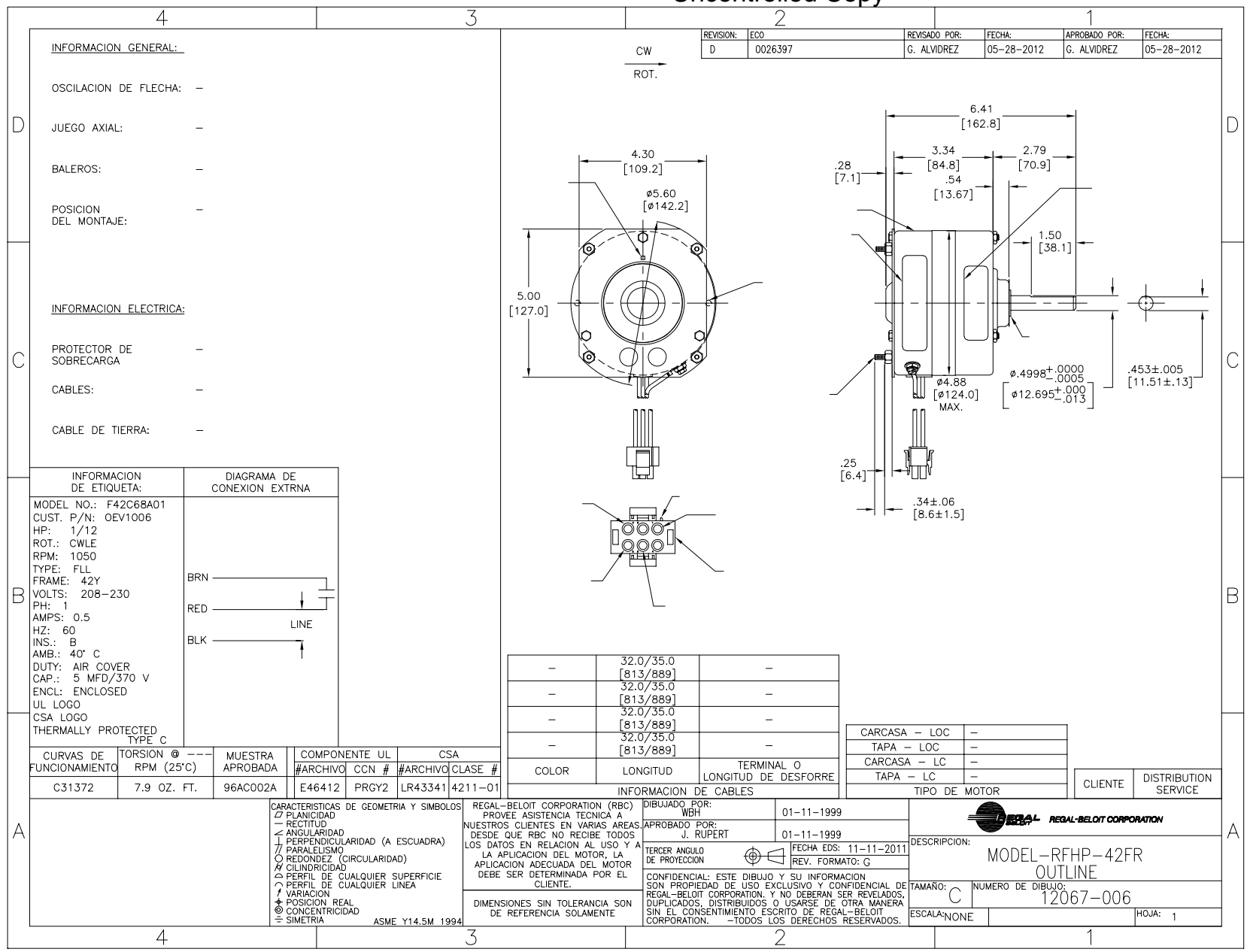
CONFIDENTIAL: THIS DRAWING AND ITS INFORMATION ARE THE EXCLUSIVE AND CONFIDENTIAL PROPERTY OF REGAL-BELOIT CORPORATION AND ARE NOT TO BE DISCLOSED, DUPLICATED, DISTRIBUTED OR OTHERWISE USED WITHOUT THE WRITTEN CONSENT OF REGAL-BELOIT CORPORATION. -ALL RIGHTS RESERVED.

REGAL-BELOIT CORPORATION

DESCRIPTION: MODEL-RFHP-42FR OUTLINE

SIZE: C DWG NO: 12067-006

SCALE: NONE SHEET 1



REVISION:	ECO	REVISADO POR:	G. ALVIDREZ	FECHA:	05-28-2012	APROBADO POR:	G. ALVIDREZ	FECHA:	05-28-2012
D	0026397								

INFORMACION GENERAL:

OSCILACION DE FLECHA: -
 JUEGO AXIAL: -
 BALEROS: -
 POSICION DEL MONTAJE: -

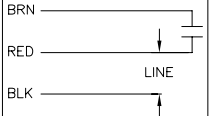
INFORMACION ELECTRICA:

PROTECTOR DE SOBRECARGA -
 CABLES: -
 CABLE DE TIERRA: -

INFORMACION DE ETIQUETA:

MODEL NO.: F42C68A01
 CUST. P/N: OEVI006
 HP: 1/12
 ROT.: CWLE
 RPM: 1050
 TYPE: FLL
 FRAME: 42Y
 VOLTS: 208-230
 PH: 1
 AMPS: 0.5
 HZ: 60
 INS.: B
 AMB.: 40° C
 DUTY: AIR COVER
 CAP.: 5 MFD/370 V
 ENCL: ENCLOSED
 UL LOGO
 CSA LOGO
 THERMALLY PROTECTED TYPE C

DIAGRAMA DE CONEXION EXTRNA



-	32.0/35.0	-
-	[813/889]	-
-	32.0/35.0	-
-	[813/889]	-
-	32.0/35.0	-
-	[813/889]	-
-	32.0/35.0	-
-	[813/889]	-

CARCASA - LOC	-
TAPA - LOC	-
CARCASA - LC	-
TAPA - LC	-

CURVAS DE FUNCIONAMIENTO	TORSION @ RPM (25°C)	MUESTRA APROBADA	COMPONENTE UL	CSA
C31372	7.9 OZ. FT.	96AC002A	#ARCHIVO CEN # PRGY2	#ARCHIVO CLASE # LR43341 4211-01

REGAL-BELOIT CORPORATION (RBC) PROVEE ASISTENCIA TECNICA A NUESTROS CLIENTES EN VARIAS AREAS. DESDE QUE RBC NO RECIBE TODOS LOS DATOS EN RELACION AL USO Y LA APLICACION DEL MOTOR, LA APLICACION ADECUADA DEL MOTOR DEBE SER DETERMINADA POR EL CLIENTE.

DIMENSIONES SIN TOLERANCIA SON DE REFERENCIA SOLAMENTE

DIBUJADO POR: WBH 01-11-1999
 APROBADO POR: J. RUPERT 01-11-1999

TERCER ANGULO DE PROYECCION

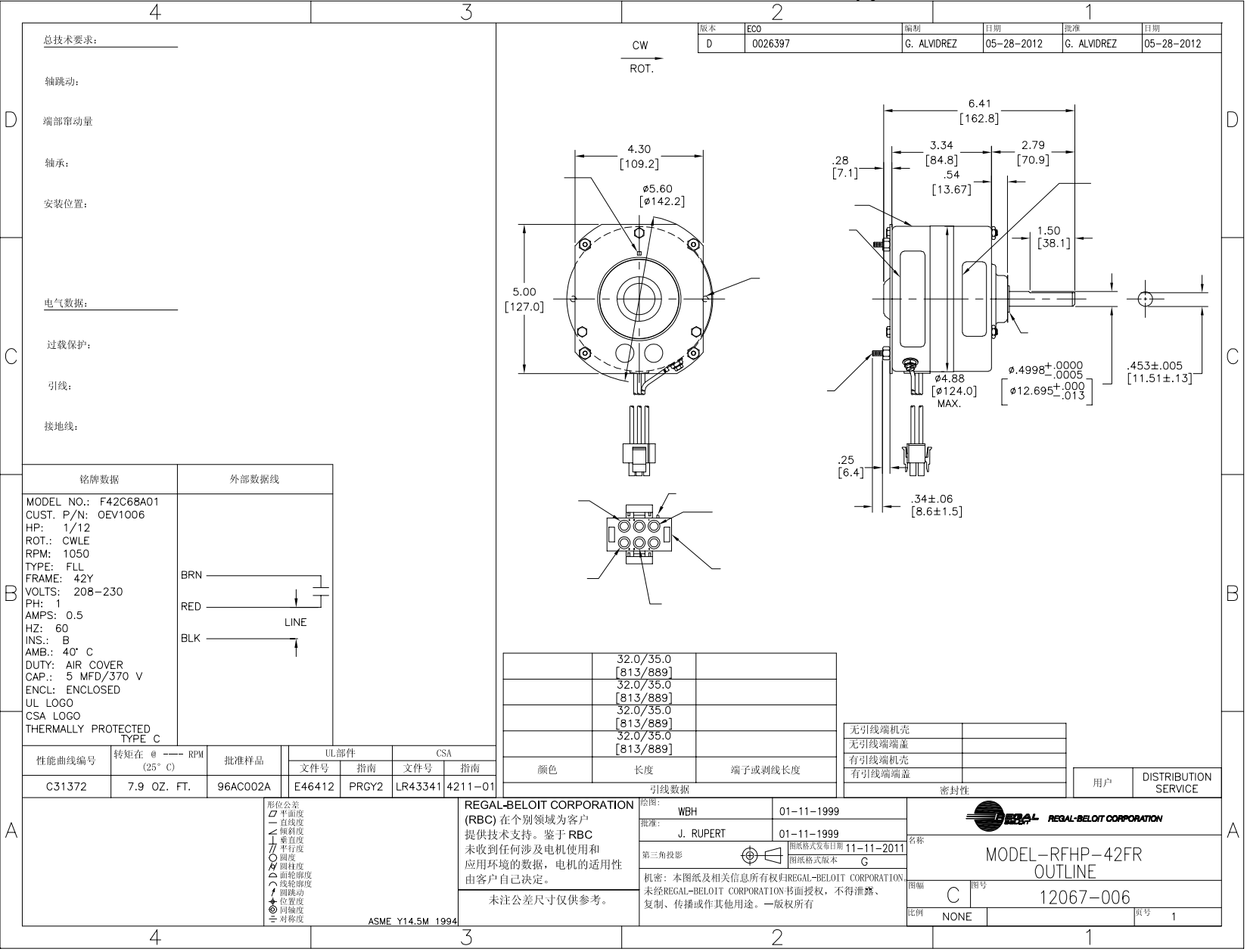
CONFIDENCIAL: ESTE DIBUJO Y SU INFORMACION SON PROPIEDAD DE USO EXCLUSIVO Y CONFIDENCIAL DE REGAL-BELOIT CORPORATION, Y NO DEBERAN SER REVELADOS, DUPLICADOS, DISTRIBUIDOS O USARSE DE OTRA MANERA SIN EL CONSENTIMIENTO ESCRITO DE REGAL-BELOIT CORPORATION. -TODOS LOS DERECHOS RESERVADOS.

REGAL-BELOIT CORPORATION

DESCRIPCION: MODEL-RFHP-42FR OUTLINE

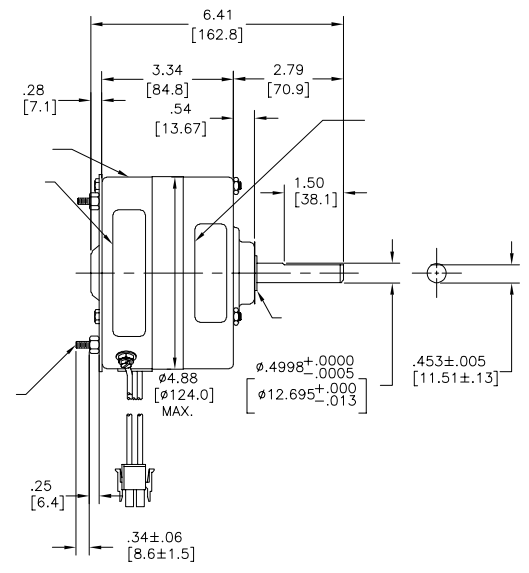
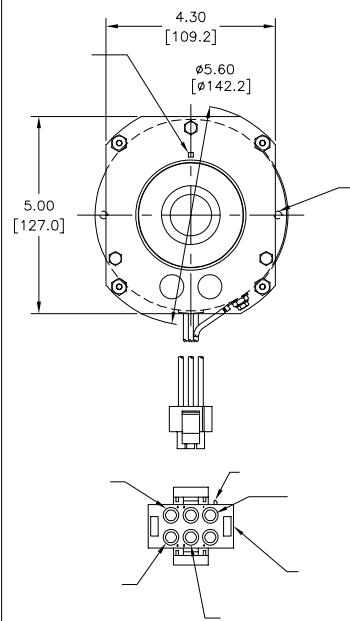
TAMAÑO: C NUMERO DE DIBUJO: 12067-006

ESCALA: NONE HOJA: 1



版本	ECO	编制	日期	批准	日期
D	0026397	G. ALVIDREZ	05-28-2012	G. ALVIDREZ	05-28-2012

总技术要求:
轴跳动:
端部窜动量
轴承:
安装位置:
电气数据:
过载保护:
引线:
接地线:



32.0/35.0	[813/889]	
32.0/35.0	[813/889]	
32.0/35.0	[813/889]	
32.0/35.0	[813/889]	
32.0/35.0	[813/889]	
颜色	长度	端子或剥线长度

铭牌数据	外部数据线
MODEL NO.: F42C68A01 CUST. P/N: OEVI006 HP: 1/12 ROT.: CWLE RPM: 1050 TYPE: FLL FRAME: 42Y VOLTS: 208-230 PH: 1 AMPS: 0.5 HZ: 60 INS.: B AMB.: 40° C DUTY: AIR COVER CAP.: 5 MFD/370 V ENCL: ENCLOSED UL LOGO CSA LOGO THERMALLY PROTECTED TYPE C	BRN RED BLK LINE

性能曲线编号	转矩在 @ (25° C) RPM	批准样品	UL部件		CSA	
			文件号	指南	文件号	指南
C31372	7.9 OZ. FT.	96AC002A	E46412	PRGY2	LR43341	4211-01

REGAL-BELOIT CORPORATION
 (RBC) 在个别领域为客户
 提供技术支持。鉴于 RBC
 未收到任何涉及电机使用和
 应用环境的数据，电机的适用性
 由客户自己决定。
 未注公差尺寸仅供参考。

无引线端机壳	
无引线端盖	
有引线端机壳	
有引线端盖	
密封性	
用户	DISTRIBUTION SERVICE

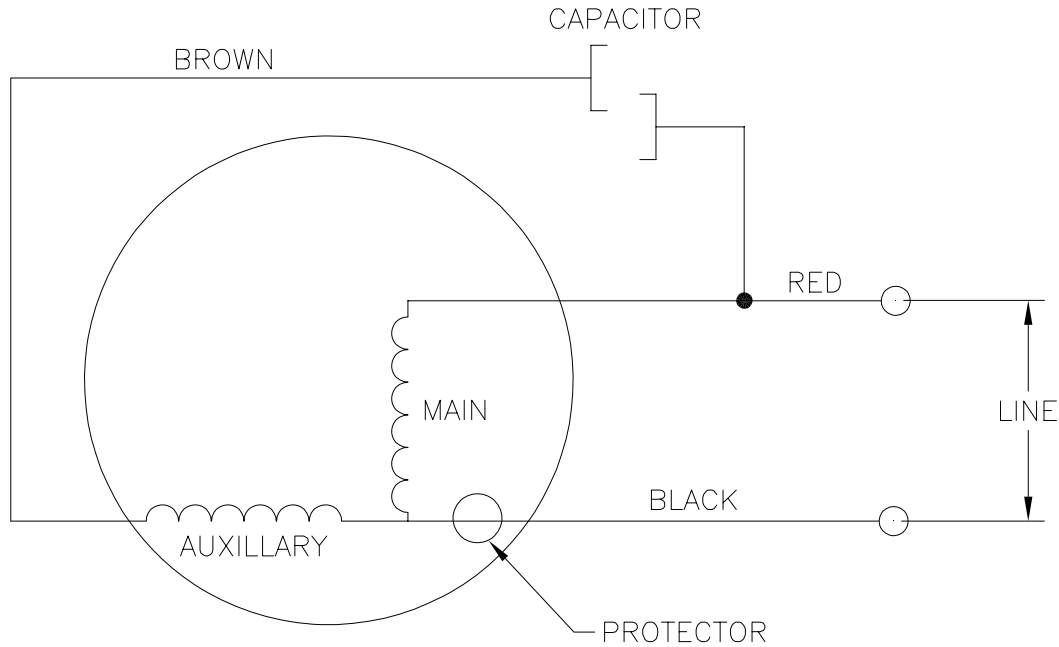
形位公差 □ 平面度 ⊥ 垂直度 ∠ 倾斜度 ⊥ 平行度 ○ 圆度 ⊙ 圆跳动 ⊙ 面轮廓度 ⊙ 线轮廓度 ⊙ 位置度 ⊙ 同轴度 ⊙ 对称度	ASME Y14.5M 1994
--	------------------

图号: WBH 批准: J. RUPERT 第三角投影 图底格式发布日期: 11-11-2011 图底格式版本: G	01-11-1999 01-11-1999 名称: MODEL-RFHP-42FR OUTLINE 图幅: C 图号: 12067-006 比例: NONE 页号: 1
--	--

REV	ECO	REV BY	DATE	APPD	DATE
B	ECO-0018951	J.HESS	05-13-2011	J.HESS	05-13-2011

QUALITY CONTROL NOTE:

1. TO CHECK THE WINDINGS FOR OPENS, VERIFY THE CONTINUITY BETWEEN THE RED AND BROWN LEADS.
2. SINGLE SPEED



GEOMETRIC CHARACTERISTICS & SYMBOLS

- ∇ FLATNESS
- STRAIGHTNESS
- ∠ ANGULARITY
- ⊥ PERPENDICULARITY (SQUARENESS)
- ∥ PARALLELISM
- ROUNDNESS (CIRCULARITY)
- ⊘ CYLINDRICITY
- △ PROFILE OF ANY SURFACE
- ▽ PROFILE OF ANY LINE
- ↗ RUNOUT
- ⊕ TRUE POSITION
- ◎ CONCENTRICITY
- ≡ SYMMETRY

UNLESS OTHERWISE SPECIFIED
DIM. TOLERANCES ARE AS FOLLOWS:

INCH	±.1	±.02	±.005	±.0005
mm	±0.5	±0.13	±0.013	

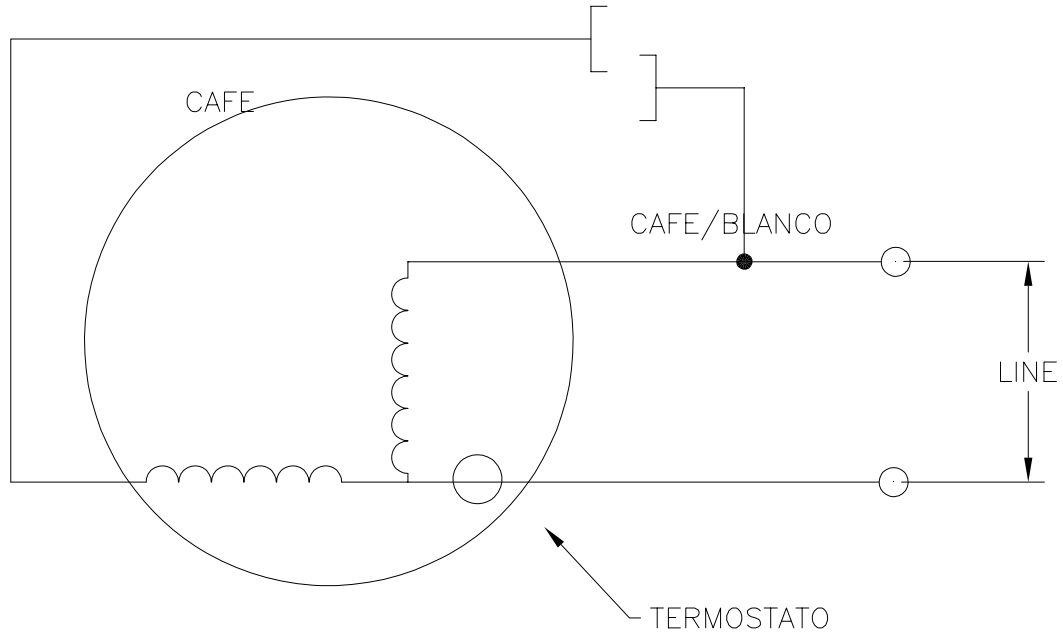
ANG. ±.50 DEG
REMOVE BURRS & BREAK SHARP EDGES:
INCH .003-.015 mm 0.1-0.4
CORNER FILLETS TO:
INCH .020 mm 0.5
MACHINE SURFACES:
INCH 125 mm 3.2
METRIC DIMS. SHOWN IN [BRACKETS]

DR BY:	STOKES	04-14-1982
APPD:	CORBIN	04-27-1982
THIRD ANGLE PROJECTION		EDS DATE 02-22-2008 FORMAT REV F
CONFIDENTIAL: THIS DRAWING AND ITS INFORMATION ARE THE EXCLUSIVE AND CONFIDENTIAL PROPERTY OF A.O. SMITH CORP. AND ARE NOT TO BE DISCLOSED, DUPLICATED, DISTRIBUTED OR OTHERWISE USED WITHOUT THE WRITTEN CONSENT OF A.O. SMITH CORP. -ALL RIGHTS RESERVED. ASME Y14.5M 1994		

		ELECTRICAL PRODUCTS COMPANY <small>A DIVISION OF A. O. SMITH CORPORATION</small>	
DESCRIPTION			
CONN DIAGRAM-EXTERNAL			
SIZE	A	DWG NO	7556A61
SCALE	NONE		SHEET 1

Uncontrolled Copy

REVISION:	ECO	REVISADO POR:	FECHA:	APROBADO POR:	FECHA:
B	ECO-0018951	J.HESS	05-13-2011	J.HESS	05-13-2011



CARACTERISTICAS DE GEOMETRIA Y SIMBOLOS

- ∇ PLANICIDAD
- RECTITUD
- ∠ ANGULARIDAD
- ⊥ PERPENDICULARIDAD (A ESCUADRA)
- // PARALELISMO
- REDONDEZ (CIRCULARIDAD)
- ⊘ CILINDRICIDAD
- △ PERFIL DE CUALQUIER SUPERFICIE
- ⌒ PERFIL DE CUALQUIER LINEA
- ↑ VARIACION
- ⊕ POSICION REAL
- ⊗ CONCENTRICIDAD
- = SIMETRIA

A MENOS QUE SE ESPECIFIQUE DE OTRA MANERA, LAS TOLERANCIAS DE LAS DIMS. SON LAS SIGUIENTES:

PULG	±.1	±.02	±.005	±.0005
mm	±0.5	±0.13	±0.013	

ANG. ±.50 GRADOS
 ELIMINAR REBABAS Y ORILLAS FILOSAS DEL BORDE.
 PULG .003-.015 mm 0.1-0.4
 FILETEAR ESQUINA: PULG .020 mm 0.5
 MAQUINAR SUPERFICIES
 PULG 125 mm 3.2

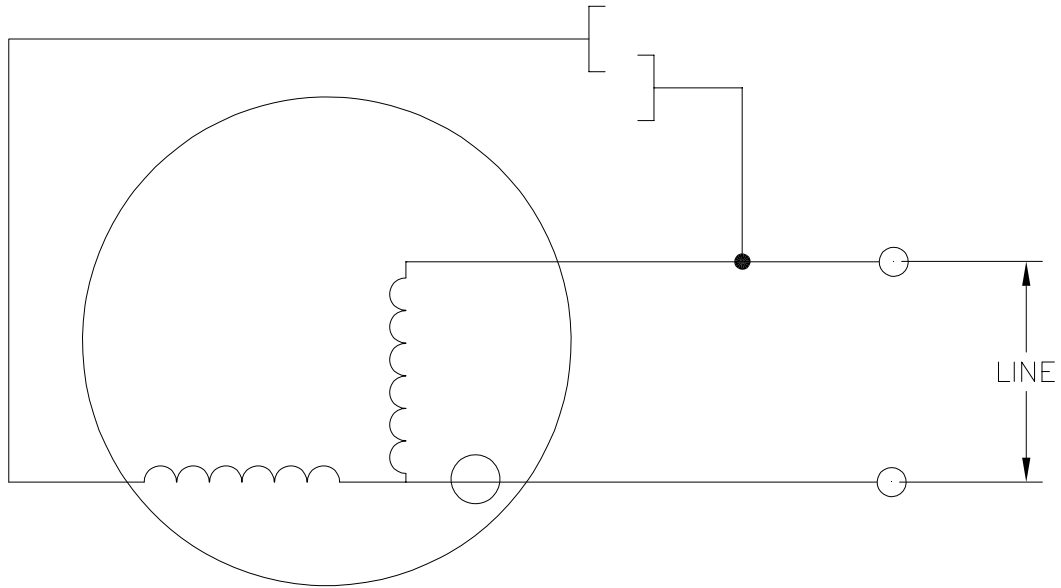
DIMS METRICAS MOSTRADAS [PARENTESIS]

DIBUJADO POR:	STOKES	04-14-1982
APROBADO POR:	CORBIN	04-27-1982
TERCER ANGULO DE PROYECCION	⊕	FECHA EDS: 02-22-2008 REV. FORMATO: F
CONFIDENCIAL: ESTE DIBUJO Y SU INFORMACION SON PROPIEDAD DE USO EXCLUSIVO Y CONFIDENCIAL DE A.O.SMITH CORP. Y NO DEBERAN SER REVELADOS, DUPLICADOS, DISTRIBUIDOS O USARSE DE OTRA MANERA SIN EL CONSENTIMIENTO ESCRITO DE A.O. SMITH CORP. -TODOS LOS DERECHOS RESERVADOS.ASME Y14.5M 1994		

ELECTRICAL PRODUCTS COMPANY <small>A DIVISION OF A. O. SMITH CORPORATION</small>	
DESCRIPCION:	
CONN DIAGRAM-EXTERNAL	
TAMAÑO: A	NUMERO DE DIBUJO: 7556A61
ESCALA: NONE	HOJA: 1

Uncontrolled Copy

版本	ECO	编制	日期	批准	日期
B	ECO-0018951	J.HESS	05-13-2011	J.HESS	05-13-2011



- 形位公差
- 平面度
- 直线度
- ∠ 倾斜度
- ⊥ 垂直度
- ∥ 平行度
- 圆度
- ⊘ 圆柱度
- ⌒ 面轮廓度
- ⌀ 线轮廓度
- ⌒ 圆跳动
- ⊖ 位置度
- ⊙ 同轴度
- ≡ 对称度

除另有注明
尺寸公差如下:

英寸	X	XX	XXX	XXXX
毫米	±.1	±.02	±.005	±.0005
毫米	±0.5	±0.13	±0.013	

角度 ±.50 度
清理毛刺和尖棱
英寸 .003-.015 毫米 0.1-0.4

内圆角
英寸 .020 毫米 0.5
表面粗糙度
英制 125 米制 3.2

米制尺寸显示在 []

绘图:	STOKES	04-14-1982
批准:	CORBIN	04-27-1982
第三角投影		图纸格式发布日期 02-22-2008 图纸格式版本 F
机密: 本图纸及相关信息所有权归A. O. SMITH公司所有。 未经A. O. SMITH公司书面授权, 不得泄露、复制、传播或作 其他用途。--版权所有		
ASME Y14.5M 1994		

		ELECTRICAL PRODUCTS COMPANY <small>A DIVISION OF A. O. SMITH CORPORATION</small>	
名称 CONN DIAGRAM-EXTERNAL			
图幅 A		图号 7556A61	
比例 NONE		页号 1	