

# PRODUCT INFORMATION PACKET



Model No: OCA10206A

Catalog No: OCA10206A

1/5 HP OEM Replacement Motor, 1050 RPM, 2 Speed, 208-230 Volts, 48 Frame, Semi Enclosed  
HVAC/R OEM Replacement Motors



Regal and Century are trademarks of Regal Beloit Corporation or one of its affiliated companies.  
©2020 Regal Beloit Corporation, All Rights Reserved. MC017097E

The REGAL logo is a grey rectangular box with the word 'REGAL' in white, italicized, uppercase letters. It is positioned on a blue and black halftone background that tapers to the right.

REGAL



**Nameplate Specifications**

Output HP	1/5 Hp	Output KW	0.15 kW
Frequency	60 Hz	Voltage	208-230 V
Current	1.3 A	Speed	1050 rpm
Service Factor	1	Phase	1
Duty	Air Over	Insulation Class	B
Frame	48Y	Enclosure	Semi Enclosed
Thermal Protection	Automatic	Ambient Temperature	60 °C
UL	Recognized	CSA	Y
CE	N		

**Technical Specifications**

Electrical Type	Permanent Split Capacitor	Starting Method	Across The Line
Poles	6	Rotation	Reversible
Mounting	Lug	Motor Orientation	Horizontal
Drive End Bearing	Sleeve	Opp Drive End Bearing	Sleeve
Frame Material	Rolled Steel	Shaft Type	Flat
Overall Length	7.82 in	Frame Length	3.13 in
Shaft Diameter	0.500 in	Shaft Extension	4.2 in
Outline Drawing	F48Z74A01-S01	Connection Drawing	614131-052

This is an uncontrolled document once printed or downloaded and is subject to change without notice. Date Created:06/11/2020

REV	REFERENCE ECN	REFERENCE PROJECT	REV BY	DATE	APPD	DATE
A	03380701	0702292	Jeff	07-23-2007	bblatt	07-11-2007

GENERAL INFORMATION:

SHAFT RUNOUT: .001 [.03] T.I.R. PER INCH LENGTH OF EXTENSION

END PLAY: .010 TO .063 [.25 TO 1.60]

BEARINGS: SLEEVE

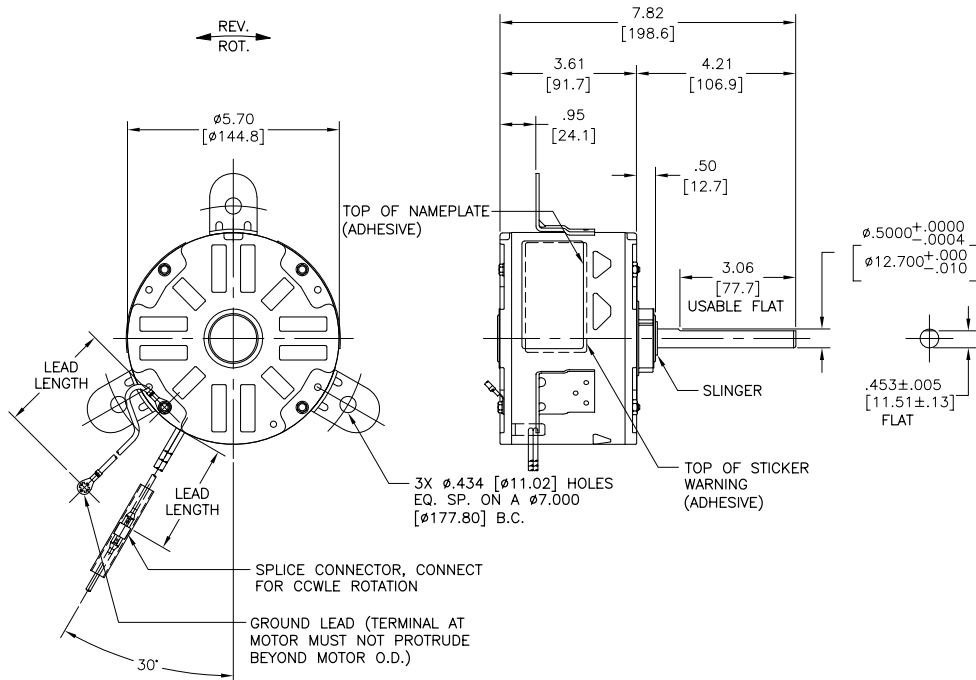
MOUNTING POSITION: HORIZONTAL

ELECTRICAL DATA:

OVERLOAD PROTECTOR: AUTOMATIC RESET (T.I. 7AM 036)

LEADS: NO. 18 GA., .06 [1.5] THK. EPDM 125°C INSUL.

GROUND LEAD: NO. 18 GA., .03 [.8] THK. (GREEN) INSUL.



COLOR	LENGTH	TERMINAL OR STRIP LENGTH
GREEN (GROUND)	52.0/56.0 [1321/1422]	#10 EYELET
BROWN	52.0/56.0 [1321/1422]	.25 [6.4] FEMALE SPADE
YELLOW	52.0/56.0 [1321/1422]	.25 [6.4] FEMALE SPADE
BLACK	52.0/56.0 [1321/1422]	.25 [6.4] FEMALE SPADE
RED	52.0/56.0 [1321/1422]	.25 [6.4] FEMALE SPADE
ORANGE	52.0/56.0 [1321/1422]	.25 [6.4] FEMALE SPADE
PURPLE	52.0/56.0 [1321/1422]	.25 [6.4] FEMALE SPADE

NAMEPLATE DATA:	EXTERNAL CONNECTION DIAGRAM
MODEL NO.: F48Z74A01 CUST. P/N: OCA10206A HP: 1/5 ROT.: REVERSIBLE RPM: 1050/2 SPD. TYPE: UF FRAME: 48Y VOLTS: 208-230 PH: 1 AMPS: 1.3 HZ: 60 INS.: B AMB.: 60° C DUTY: AIR OVER CAP.: 5 MFD/440 V ENCL.: SEMI-ENCL. UL LOGO CSA LOGO THERMALLY PROTECTED	<p>SHOWN FOR COWLE ROT. FOR CWLE ROT. INTERCHANGE ORANGE AND BROWN LEADS</p>

PERFORMANCE CURVE NO.	TORQUE @ 1050 RPM (25°C)	APPROVED SAMPLE	UL COMPONENT FILE #	CCN #	CSA FILE #	CLASS #
C18882	18.6 OZ. FT.	----	E46412	PRGY2	LR43341	4211-01

GEOMETRIC CHARACTERISTICS & SYMBOLS
▭ FLATNESS — STRAIGHTNESS < ANGLARITY ⊥ PERPENDICULARITY (SQUARENESS) // PARALLELISM ○ ROUNDNESS (CIRCULARITY) ∅ CYLINDRICITY ∩ PROFILE OF ANY SURFACE ∩ PROFILE OF ANY LINE † RUNOUT ⊕ TRUE POSITION ⊙ CONCENTRICITY = SYMMETRY

A.O. SMITH PROVIDES TECHNICAL ASSISTANCE TO OUR CUSTOMERS IN SEVERAL AREAS. SINCE A.O. SMITH DOES NOT RECEIVE ALL DATA CONCERNING THE USE AND APPLICATION OF THE MOTOR, THE APPLICATION MUST BE DETERMINED BY THE CUSTOMER.

DIMENSIONS WITHOUT TOLERANCES ARE FOR REFERENCE ONLY.

DR BY: jrupert	07-11-2007
APPD: bblatt	07-11-2007
THIRD ANGLE PROJECTION	EDS DATE 01-21-2007 FORMAT REV E

CONFIDENTIAL: THIS DRAWING AND ITS INFORMATION ARE THE EXCLUSIVE AND CONFIDENTIAL PROPERTY OF A.O. SMITH CORP. AND ARE NOT TO BE DISCLOSED, DUPLICATED, DISTRIBUTED OR OTHERWISE USED WITHOUT THE WRITTEN CONSENT OF A.O. SMITH CORP. -ALL RIGHTS RESERVED. ASME Y14.5M 1994

MAIN FRAME - OLE	OPEN
END FRAME - OLE	OPEN
MAIN FRAME - LE	ENCLOSED
END FRAME - LE	OPEN

**A.O. SMITH**  
ELECTRICAL PRODUCTS COMPANY  
TIPPECANOE CITY, IN 46157

A DIVISION OF A. O. SMITH CORPORATION  
COPYRIGHT 1995

DESCRIPTION: **OUTLINE**

SIZE: C DWG NO: **F48Z74A01**

SCALE: NONE SHEET: 1

**INFORMACION GENERAL:**

OSCILACION DE FLECHA: .001 [.03] T.I.R. PER INCH LENGTH OF EXTENSION

JUEGO AXIAL: .010 A .063 [.25 A 1.60]

BALEROS: CHUMACERA RIGIDA

POSICION DEL MONTAJE: HORIZONTAL

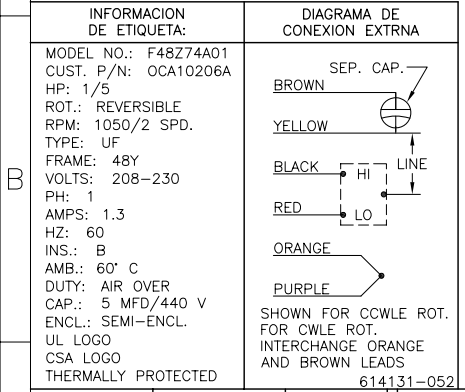
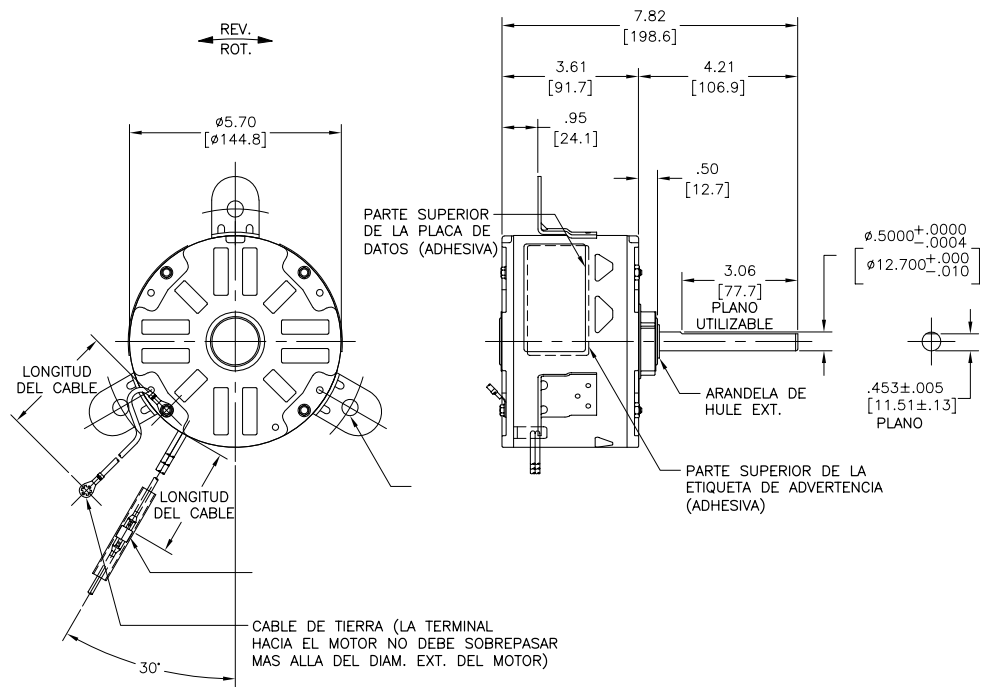
**INFORMACION ELECTRICA:**

PROTECTOR DE SOBRECARGA: REINICIO AUTOMATIC (T.I. 7AM 036)

CABLES: NO. 18 GA., .06 [1.5] THK.EPDM 125°C AISLAM.

CABLE DE TIERRA: NO. 18 GA., .03 [.8] THK. (VERDE) AISLAM.

REVISION: A	ECN REFERENCIA: 03380701	PROYECTO REFERENCIA: 0702292	REVISADO POR: Jeff	FECHA: 07-23-2007	APROBADO POR: bblatt	FECHA: 07-11-2007
-------------	--------------------------	------------------------------	--------------------	-------------------	----------------------	-------------------



COLOR	LONGITUD	TERMINAL O LONGITUD DE DESFORRE
VERDE (TIERRA)	52.0/56.0 [1321/1422]	OJAL #10
CAFE	52.0/56.0 [1321/1422]	.25 [6.4] TERMINAL ESPADE HEMBRA
AMARILLO	52.0/56.0 [1321/1422]	.25 [6.4] TERMINAL ESPADE HEMBRA
NEGRO	52.0/56.0 [1321/1422]	.25 [6.4] TERMINAL ESPADE HEMBRA
ROJO	52.0/56.0 [1321/1422]	.25 [6.4] TERMINAL ESPADE HEMBRA
NARANJA	52.0/56.0 [1321/1422]	.25 [6.4] TERMINAL ESPADE HEMBRA
PURPURA	52.0/56.0 [1321/1422]	.25 [6.4] TERMINAL ESPADE HEMBRA

CARCASA - LOC	ABIERTO
TAPA - LOC	ABIERTO
CARCASA - LC	ENCERRADO
TAPA - LC	ABIERTO

CURVAS DE FUNCIONAMIENTO	TORSION @ 1050 RPM (25°C)	MUESTRA APROBADA	COMPONENTE UL	CSA
C18882	18.6 OZ. FT.	----	E46412 PRGY2	LR43341 4211-01

**CARACTERISTICAS DE GEOMETRIA Y SIMBOLOS**

- PLANICIDAD
- RECTITUD
- ANGULARIDAD
- PERPENDICULARIDAD (A ESCUADRA)
- PARALELISMO
- REDONDEZ (CIRCULARIDAD)
- CILINDRICIDAD
- PERFIL DE CUALQUIER SUPERFICIE
- PERFIL DE CUALQUIER LINEA
- VARIACION
- POSICION REAL
- CONCENRICIDAD
- SIMETRIA

A.O. SMITH PROVEE ASISTENCIA TECNICA A NUESTROS CLIENTES EN VARIAS AREAS. DESDE QUE A.O. SMITH NO RECIBE TODOS LOS DATOS EN RELACION AL USO Y A LA APLICACION DEL MOTOR, LA APLICACION ADECUADA DEL MOTOR DEBE SER DETERMINADA POR EL CLIENTE.

DIMENSIONES SIN TOLERANCIA SON DE REFERENCIA SOLAMENTE

DIBUJADO POR: jrupert

FECHA: 07-11-2007

APROBADO POR: bblatt

FECHA: 07-11-2007

FECHA EDS: 01-21-2007

REV. FORMATO: E

CONFIDENCIAL: ESTE DIBUJO Y SU INFORMACION SON PROPIEDAD DE USO EXCLUSIVO Y CONFIDENCIAL DE A.O.SMITH CORP. Y NO DEBERAN SER REVELADOS. DUPLICADOS, DISTRIBUIDOS O USARSE DE OTRA MANERA SIN EL CONSENTIMIENTO ESCRITO DE A.O. SMITH CORP. -TODOS LOS DERECHOS RESERVADOS.ASME Y14.5M 1994

**A.O. SMITH**  
ELECTRICAL PRODUCTS COMPANY  
TYPE C17, S115

A DIVISION OF A. O. SMITH CORPORATION  
COPYRIGHT 1995

DESCRIPCION: **OUTLINE**

TAMAÑO: C

NUMERO DE DIBUJO: **F48Z74A01**

ESCALA: NONE

HOJA: 1



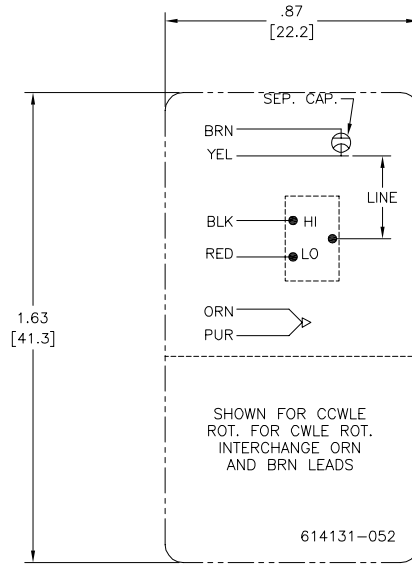
4

3

2

1

REV	ECO	REV BY	DATE	APPD	DATE
B	0020045	YL	04-15-2011	HZ	04-15-2011



- NOTES:  
 1. FOR USE WITH 614129 OR 2513020-001 NAMEPLATE BLANKS  
 2. ——— INDICATES DIMENSION LIMITS

GEOMETRIC CHARACTERISTICS & SYMBOLS ▭ FLATNESS — STRAIGHTNESS ∠ ANGULARITY ⊥ PERPENDICULARITY (SQUARENESS) // PARALLELISM ○ ROUNDNESS (CIRCULARITY) ⌀ CYLINDRICITY △ PROFILE OF ANY SURFACE ∩ PROFILE OF ANY LINE † RUNOUT ⊕ TRUE POSITION ⊙ CONCENTRICITY ≡ SYMMETRY	UNLESS OTHERWISE SPECIFIED DIM. TOLERANCES ARE AS FOLLOWS: INCH X XX XXX XXXX ±.1 ±.02 ±.005 ±.0005 mm ±0.5 ±0.13 ±0.013 ANG. ±.50 DEG REMOVE BURRS & BREAK SHARP EDGES: INCH .003-.015 mm 0.1-.04 CORNER FILLETS TO: INCH .020 mm 0.5 MACHINE SURFACES: INCH 125 mm 3.2 METRIC DIMS. SHOWN IN [BRACKETS]	DR BY: YL	04-15-2011		<b>ELECTRICAL PRODUCTS COMPANY</b> A DIVISION OF A.O. SMITH CORPORATION
		APPD: HZ	04-15-2011		
THIRD ANGLE PROJECTION				DESCRIPTION CONN DIAGRAM-NAMEPLATE	
CONFIDENTIAL: THIS DRAWING AND ITS INFORMATION ARE THE EXCLUSIVE AND CONFIDENTIAL PROPERTY OF A.O. SMITH CORP. AND ARE NOT TO BE DISCLOSED, DUPLICATED, DISTRIBUTED OR OTHERWISE USED WITHOUT THE WRITTEN CONSENT OF A.O. SMITH CORP. -ALL RIGHTS RESERVED. ASME Y14.5M 1994				SIZE C	DWG NO 614131-052
				SCALE	SHEET 1

4

3

2

1

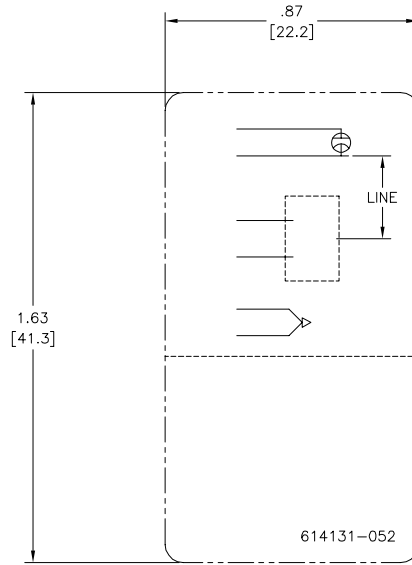
4

3

2

1

REVISION:	ECO	REVISADO POR:	FECHA:	APROBADO POR:	FECHA:
B	0020045	YL	04-15-2011	HZ	04-15-2011



- NOTAS:
1. PARA USO CON PLACA DE DATOS EN BLANCO 614129 OR 2513020-001.
  2. INDICA LIMITES DE DIMENSION

CARACTERISTICAS DE GEOMETRIA Y SIMBOLOS ▽ PLANICIDAD — RECTITUD ∠ ANGULARIDAD ⊥ PERPENDICULARIDAD (A ESCUADRA) // PARALELISMO ○ REDONDEZ (CIRCULARIDAD) Ⓞ CILINDRICIDAD Ⓜ PERFIL DE CUALQUIER SUPERFICIE ⤴ PERFIL DE CUALQUIER LINEA † VARIACION ⊕ POSICION REAL ⊙ CONCENRICIDAD ⊖ SIMETRIA	A MENOS QUE SE ESPECIFIQUE DE OTRA MANERA, LAS TOLERANCIAS DE LAS DIMS. SON LAS SIGUIENTES: PULG ±.1 ±.02 ±.005 ±.0005 mm ±0.5 ±0.13 ±0.013 ANG. ±50 GRADOS ELIMINAR REBABAS Y ORILLAS FILOSAS DEL BORDE. PULG .003-.015 mm 0.1-0.4 FILETEAR ESQUINA: PULG .020 mm 0.5 MAQUINAR SUPERFICIES PULG .125 mm .32 DIMS METRICAS MOSTRADAS [PARENTESIS]	DIBUJADO POR:	YL	04-15-2011				
		APROBADO POR:	HZ	04-15-2011		DESCRIPCION:	CONN DIAGRAM-NAMEPLATE	
		TERCER ANGULO DE PROYECCION		FECHA EDS: 02-22-2008 REV. FORMATO: F	TAMAÑO:	C	NUMERO DE DIBUJO:	614131-052
		CONFIDENCIAL: ESTE DIBUJO Y SU INFORMACION SON PROPIEDAD DE USO EXCLUSIVO Y CONFIDENCIAL DE A.O.SMITH CORP. Y NO DEBERAN SER REVELADOS, DUPLICADOS, DISTRIBUIDOS O USARSE DE OTRA MANERA SIN EL CONSENTIMIENTO ESCRITO DE A.O. SMITH CORP. -TODOS LOS DERECHOS RESERVADOS.ASME Y14.5M 1994		ESCALA:		HOJA:	1	

4

3

2

1

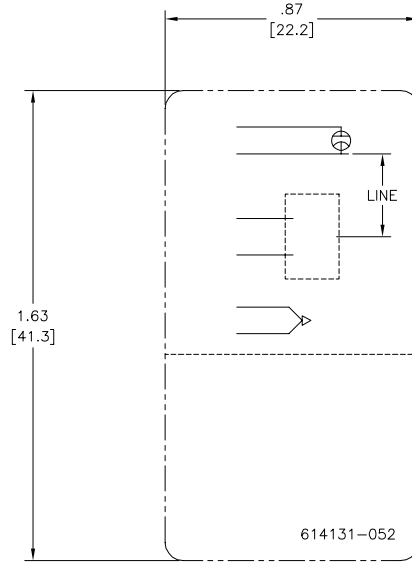
4

3

2

1

版本	ECO	编制	日期	批准	日期
B	0020045	YL	04-15-2011	HZ	04-15-2011



形位公差 □ 平面度 — 直线度 ∠ 倾斜度 ⊥ 垂直度 // 平行度 ○ 圆度 ⊙ 圆跳动 Ⓜ 面轮廓度 Ⓡ 轮廓度 Ⓢ 圆跳动 Ⓣ 位置度 Ⓤ 对称度	除另有注明 尺寸公差如下： 英寸 X XX XXX XXXX 毫米 ±.1 ±.02 ±.005 ±.0005 角度 ±.50 度 清理毛刺和尖棱 英寸 .003-.015 毫米 0.1-0.4 内圆角 英寸 .020 毫米 0.5 表面粗糙度 英制 125 米制 3.2 米制尺寸显示在[]	绘图： YL 批准： HZ 第三角投影	04-15-2011 04-15-2011 图纸格式发布日期 02-22-2008 图纸格式版本 F	AC Smith ELECTRICAL PRODUCTS COMPANY A DIVISION OF A. O. SMITH CORPORATION 名称 CONN DIAGRAM-NAMEPLATE
	机密：本图纸及相关信息所有权归A. O. SMITH公司所有。 未经A. O. SMITH公司书面授权，不得泄露、复制、传播或作 其他用途。—版权所有	图幅 C 图号 614131-052	比例 1	
	ASME Y14.5M 1994			

4

3

2

1