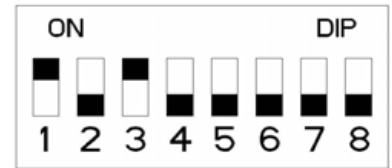
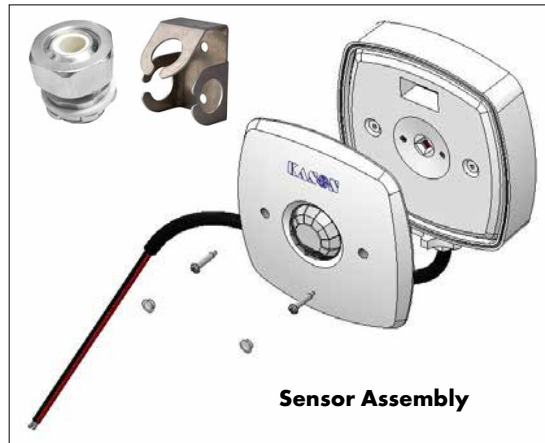


1901A Motion Sensor Part Number: 11901A00005



Factory Settings



SPECIFICATIONS

- Voltage: 120 / 277 V @ 60 Hz
- Load: 120 V / 0–800 W ballast
- 277 V / 0–1200 W ballast
- Time Delay: 10 sec – 20 min
- Size: 4" H x 4" W x 2.16" D
- [102.58 cm* 102.58 cm* 55 cm]
- Weight: 0.5 lb [227 grams]
- Temperature:
 - Min: -20°F [-28.9°C]
 - Max: 160°F [60°C]
- Electrical Connection:
 - 1/2" conduit connection
 - 18" 18 AWG wire
 - IP 65
 - Wire temperature 105°C*
 - cULus wet location - indoor use only
 - NSF
- Protective Device: A fast blow fuse or circuit breaker mounted within 25 feet from sensor (line side) is required.

*Some incandescent fixtures may require higher temperature wires. Remote mounting or adding fiberglass sleeves over the wires may be required.

INSTALLATION

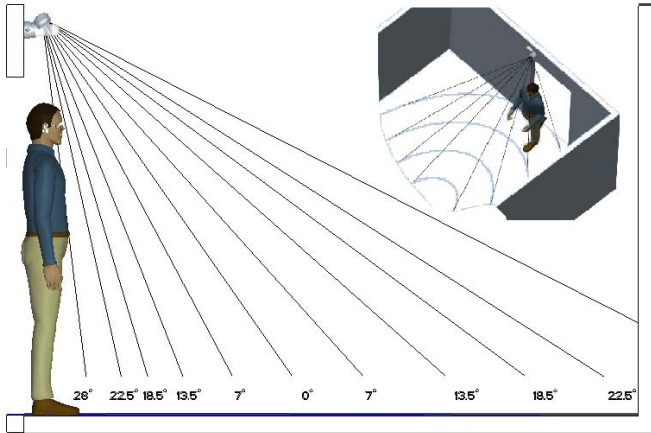
1. The ideal location for the sensor is above door aimed to 8' in front of the doorway without any obstructions. See "Sensor Set Up and Testing."
2. Thread the 1/2 NPT arm into a threaded 90° elbow, junction box or into light fixture housing. It is best to be able to adjust rotation and tilt of the sensor.
3. Connect the line voltage, neutral and load wires to the sensor leads as shown in wiring diagram (pg. 2).
4. Test the sensor for sensitivity and range (pg. 2). This unit is pre-set based on typical walk-in applications for a 2 minute delay and 80% sensitivity. If your application requires alternate settings, simply remove the front cover (2 screws and seals) and make the necessary changes. Remember to reinstall the two screws and seals when finished.

1	2	PIR	Sensitivity	3	4	5	Delay	6	7	8	Sensor
↓	↓	100%	High	↓	↓	↓	10 sec	↓	↓	↓	Factory
↓	↑	90%		↓	↓	↑	20 sec				
↑	↓	80%	Factory	↓	↑	↓	30 sec				
↑	↑	70%		↓	↑	↑	1 min				
				↑	↓	↓	2 min (factory)				
				↑	↓	↑	5 min				
				↑	↑	↓	10 min				
				↑	↑	↑	20 min				

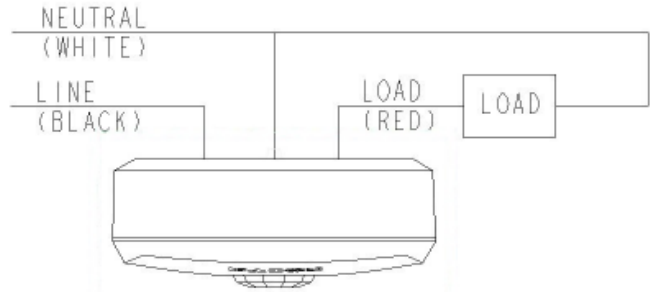
1901A Motion Sensor

Part Number: 11901A00005

SENSOR SETUP AND TESTING



WIRING FOR SINGLE



LOCATION

Sensor should be placed above the door. Sensor should be angled toward the center of the room without any obstructions. Sensor lens is designed to work in zones. If occupant crosses a zone the sensor will turn the lights on.

TESTING

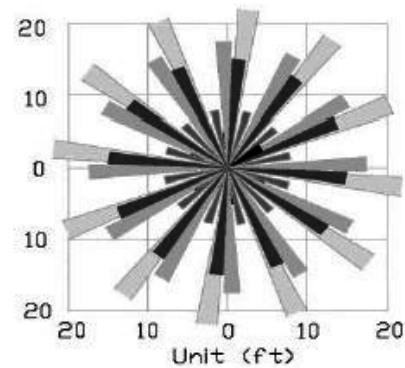
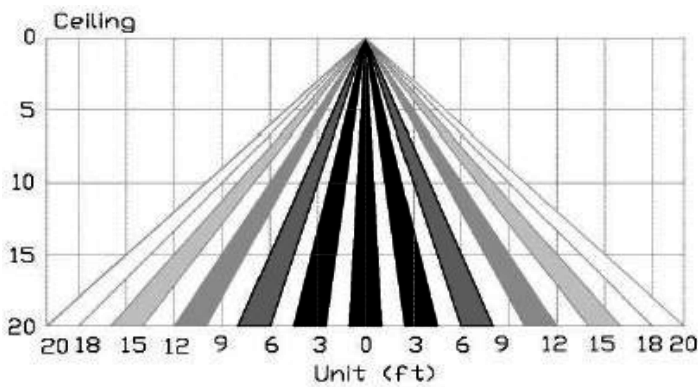
Allow a few minutes for the sensor to warm up then enter room. The sensor is equipped with a red LED indicator that will activate when motion is sensed.

SPECIAL NOTE FROM THE FIELD

Always disable any existing light switches. The motion sensor will not function as intended if the customer can turn the circuit off or has the ability to override the motion sensor.

WARNINGS AND CAUTIONS

- All installation must comply with local and National Electrical Codes
- The manufacturer assumes no responsibility for improper installation or application
- Turn off electricity at the breaker or fuse box for installation



REPLACEMENT PARTS LIST

11901A00005	Low Bay sensor module (up to 20')
11901000009	Wall mounting kit with cord grip

To order additional sensors or replacement parts, please contact your local Kason representative www.kasonind.com

1901A Motion Sensor
Part Number: 11901A00005

