

PRODUCT INFORMATION PACKET



Model No: H979L

Catalog No: H979L

5.0 HP OEM Replacement HVAC/R Motor, 3 phase, 1800 RPM, 208-230/460 V, 56Y Frame, ODP
HVAC/R OEM Replacement Motors



Regal and Century are trademarks of Regal Beloit Corporation or one of its affiliated companies.
©2019 Regal Beloit Corporation, All Rights Reserved. MC017097E

The REGAL logo consists of the word 'REGAL' in a bold, white, sans-serif font, set against a dark grey, trapezoidal background. This logo is positioned on a blue, vertically-oriented decorative bar that features a halftone dot pattern.



Nameplate Specifications

| | | | |
|--------------------|-----------------|---------------------|-----------------|
| Output HP | 5.0 Hp | Output KW | 3.7 kW |
| Frequency | 60 Hz | Voltage | 208-230/460 V |
| Current | 14.5-14.4/7.2 A | Speed | 1725 rpm |
| Service Factor | 1.15 | Phase | 3 |
| Duty | Continuous | Insulation Class | B |
| Frame | Y56Y | Enclosure | Open Drip Proof |
| Thermal Protection | None | Ambient Temperature | 40 °C |
| UL | Recognized | CSA | Y |
| CE | N | | |

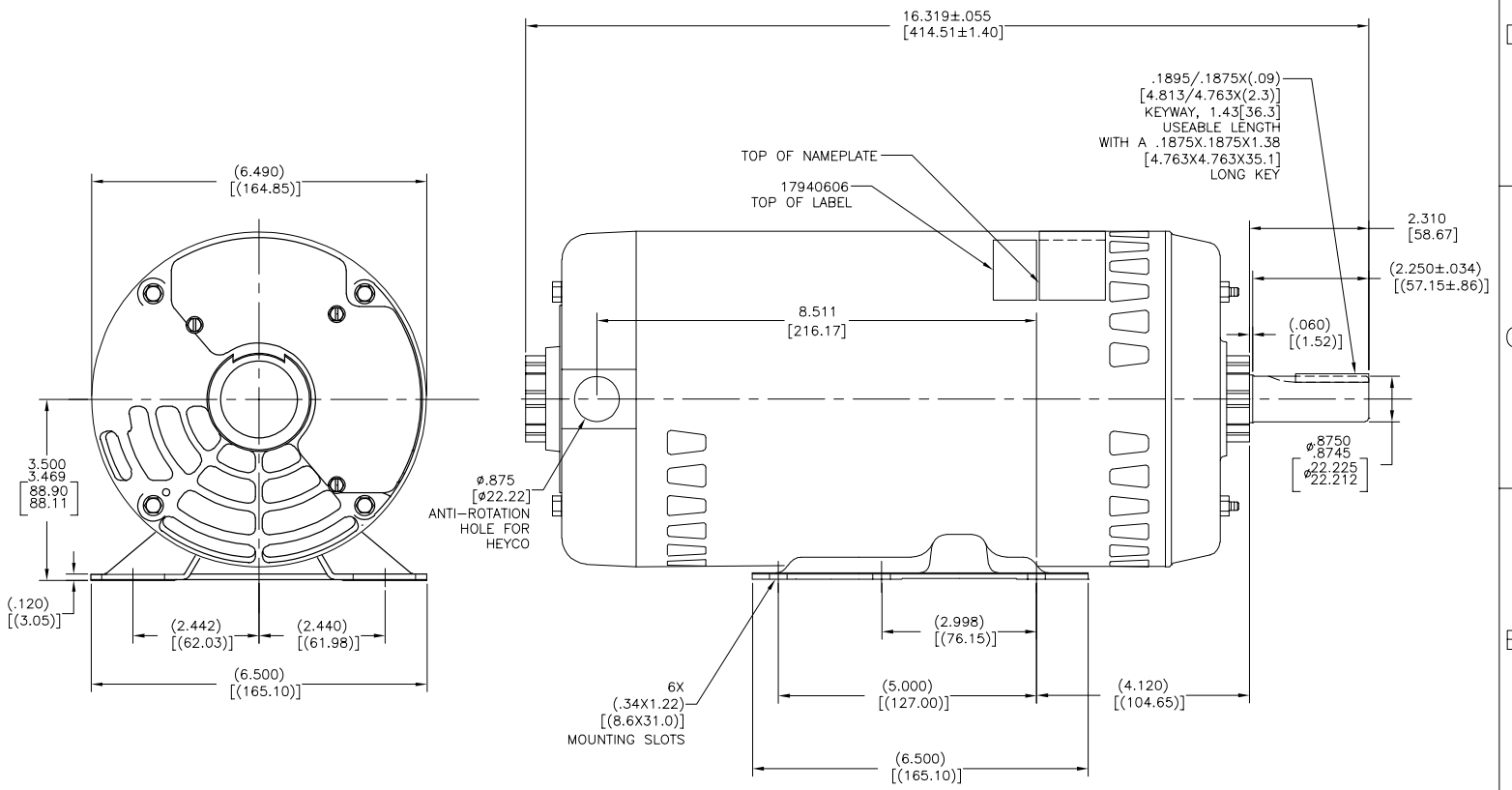
Technical Specifications

| | | | |
|-----------------------|---|-------------------|-----------------------------|
| Electrical Type | Polyphase, Induction Type, Single Or Dual Voltage | Starting Method | Across The Line |
| Poles | 4 | Rotation | Reversible Counterclockwise |
| Mounting | Rigid Base | Drive End Bearing | Ball |
| Opp Drive End Bearing | Ball | Frame Material | Rolled Steel |
| Shaft Type | Keyed | Overall Length | 16.32 in |
| Frame Length | 10.38 in | Shaft Diameter | 0.875 in |
| Shaft Extension | 2.31 in | | |

This is an uncontrolled document once printed or downloaded and is subject to change without notice. Date Created:04/11/2019

| REV | ECO | REV BY | DATE | APPD | DATE |
|-----|-------------|----------|------------|-----------|------------|
| D | ECO-0026845 | K.PALOMO | 06-12-2012 | S.JIMENEZ | 06-12-2012 |

NOTE:
1. ALL DIMENSIONS SHOWN IN PARENTHESIS ARE REFERENCE DIMENSIONS.



GEOMETRIC CHARACTERISTICS & SYMBOLS

- FLATNESS
- STRAIGHTNESS
- ANGULARITY
- PERPENDICULARITY (SQUARENESS)
- PARALLELISM
- ROUNDNESS (CIRCULARITY)
- CYLINDRICITY
- PROFILE OF ANY SURFACE
- RUNOUT
- TRUE POSITION
- CONCENTRICITY
- SYMMETRY

ASME Y14.5M 1994

UNLESS OTHERWISE SPECIFIED DIM. TOLERANCES ARE AS FOLLOWS:

INCH X XX XXX XXXX
 INCH ±.1 ±.02 ±.005 ±.0005
 mm ±0.5 ±0.13 ±0.013

ANG. ±.50 DEG
 REMOVE BURRS & BREAK SHARP EDGES:
 INCH .003-.015 mm 0.1-0.4

CORNER FILLETS TO:
 INCH .020 mm 0.5

MACHINE SURFACES:
 INCH 125 mm 3.2

METRIC DIMS. SHOWN IN [BRACKETS]

DR BY: JL 05-20-2010

APPD: KX 05-20-2010

EDS DATE 11-11-2011

FORMAT REV H

THIRD ANGLE PROJECTION

CONFIDENTIAL: THIS DRAWING AND ITS INFORMATION ARE THE EXCLUSIVE AND CONFIDENTIAL PROPERTY OF REGAL-BELOIT CORPORATION AND ARE NOT TO BE DISCLOSED, DUPLICATED, DISTRIBUTED OR OTHERWISE USED WITHOUT THE WRITTEN CONSENT OF REGAL-BELOIT CORPORATION. -ALL RIGHTS RESERVED.

REGAL-BELOIT CORPORATION

DESCRIPTION: MODEL-CFHP-56FR OUTLINE

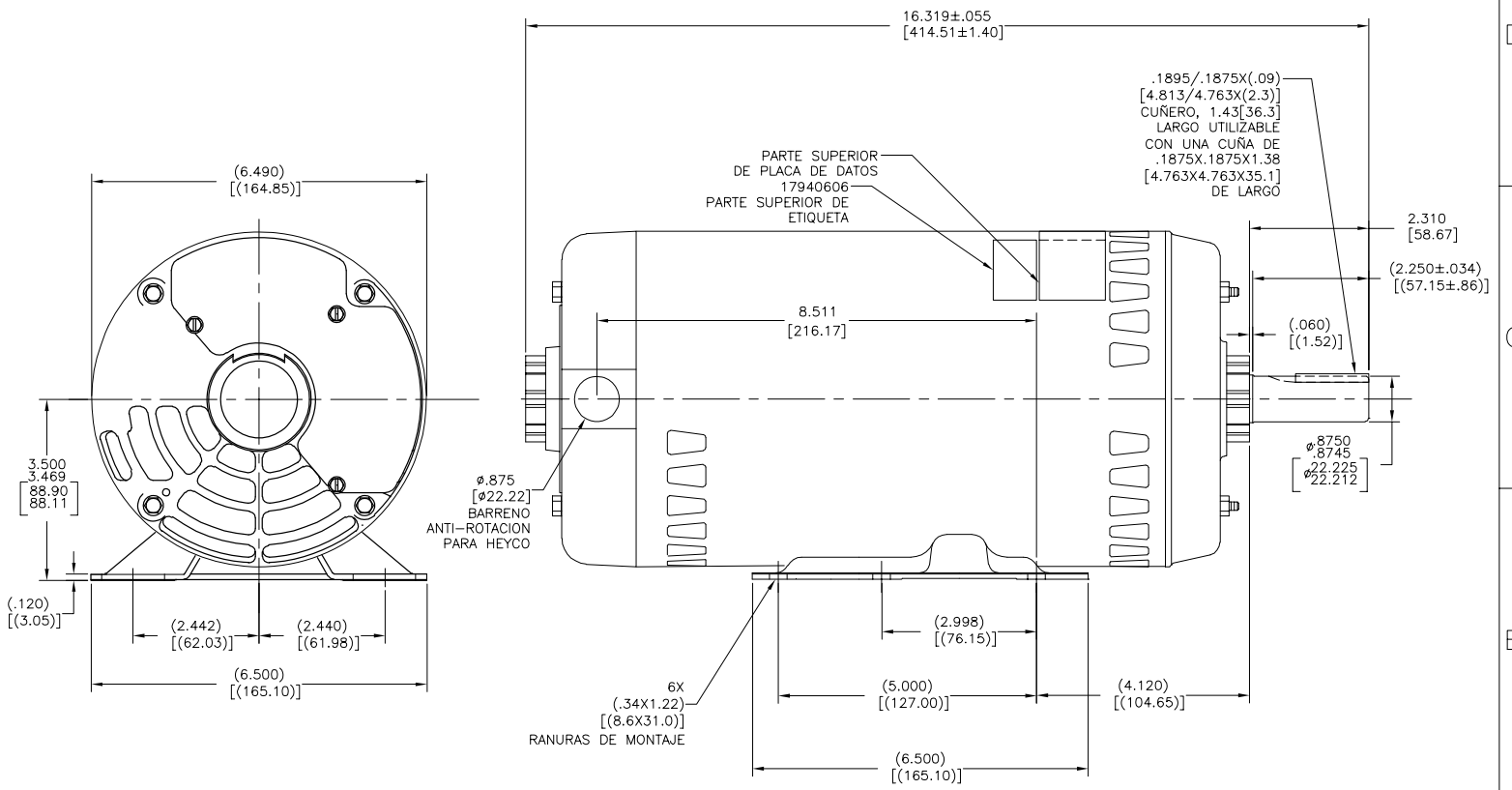
SIZE: C DWG NO: H979L

SCALE: NONE SHEET 1

4 3 2 1

NOTA:
1. TODAS LAS DIMENSIONES MOSTRADAS ENTRE PARENTESIS SON DIMENSIONES DE REFERENCIA.

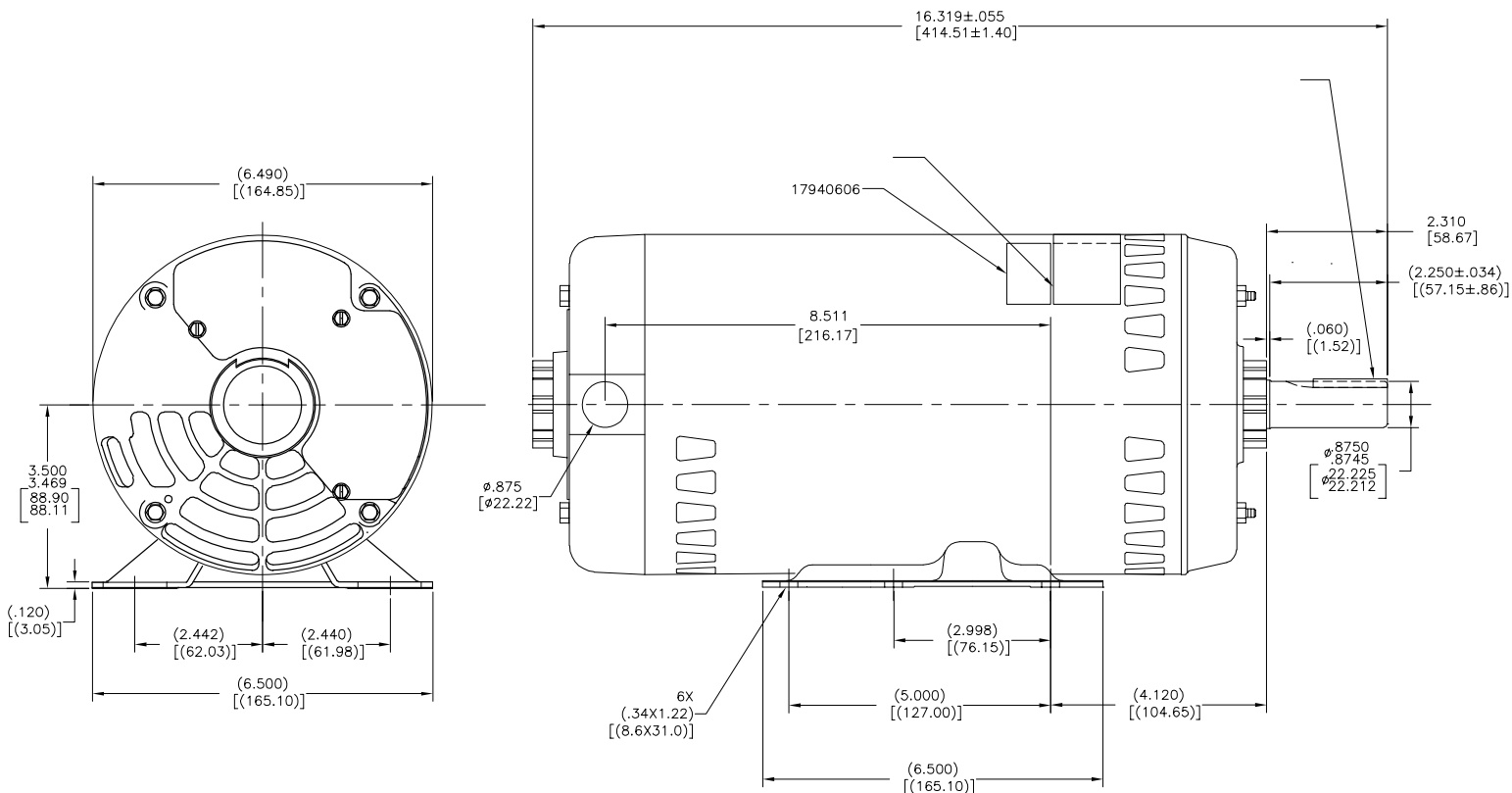
| | | | | |
|---------------|------------------------|-------------------|-------------------------|-------------------|
| REVISION: ECO | REVISADO POR: K.PALOMO | FECHA: 06-12-2012 | APROBADO POR: S.JIMENEZ | FECHA: 06-12-2012 |
| D | ECO-0026845 | | | |



| | | | | |
|--|---|------------------|------------|---|
| CARACTERISTICAS DE GEOMETRIA Y SIMBOLOS: ▽ PLANICIDAD - RECTITUD ∠ ANGULARIDAD ⊥ PERPENDICULARIDAD (A ESCUADRA) // PARALELISMO ○ REDONDEZ (CIRCULARIDAD) ∅ CILINDRICIDAD ~ PERFIL DE CUALQUIER SUPERFICIE ~ PERFIL DE CUALQUIER LINEA ↑ VARIACION ★ POSICION REAL ⊙ CONCENTRICIDAD = SIMETRIA | A MENOS QUE SE ESPECIFIQUE DE OTRA MANERA, LAS TOLERANCIAS DE LAS DIMS. SON LAS SIGUIENTES: PULG ±.1 ±.02 ±.005 ±.0005 mm ±0.5 ±0.13 ±0.013 ANG. ±50 GRADOS ELIMINAR REBABAS Y ORILLAS FILOSAS DEL BORDE. PULG .003-.015 mm 0.1-.04 FILETEAR ESQUINA: PULG .020 mm 0.5 MAQUINAR SUPERFICIES PULG 12 mm 3.2 DIMS. METRICAS MOSTRADAS [PARENTESIS] | DIBUJADO POR: JL | 05-20-2010 | REGAL BELOIT CORPORATION DESCRIPCION: MODEL-CFHP-56FR OUTLINE TAMANO: C NUMERO DE DIBUJO: H979L ESCALA: NONE HOJA: 1 |
| | | APROBADO POR: KX | 05-20-2010 | |

4 3 2 1

| 版本 | ECO | 编制 | 日期 | 批准 | 日期 |
|----|-------------|----------|------------|-----------|------------|
| D | ECO-0026845 | K.PALOMO | 06-12-2012 | S.JIMENEZ | 06-12-2012 |



| 形位公差 | 说明 |
|--------|------------------------------|
| □ 平面度 | 除另有注明 |
| — 直线度 | 尺寸公差如下: |
| ∠ 垂直度 | 英寸 X XX XXX XXXX |
| ∥ 平行度 | 毫米 ±0.1 ±0.02 ±0.005 ±0.0005 |
| ⊥ 垂直度 | 毫米 ±0.5 ±0.13 ±0.013 |
| ∠ 角度 | 角度 ± 50 度 |
| ○ 圆度 | 清理毛刺和尖棱 |
| ⊙ 圆跳动 | 英寸, 0.03-, 015 毫米 0.1-0.4 |
| ⊙ 面轮廓度 | 内圆角 |
| ⊙ 线轮廓度 | 英寸, 0.02 毫米 0.5 |
| ⊙ 圆跳动 | 表面粗糙度 |
| ⊙ 位置度 | 英制 125 米制 3.2 |
| ⊙ 对称度 | 米制尺寸显示在 [] |

| |
|------------------|
| ASME Y14.5M 1994 |
|------------------|

| | | |
|--|----|---------------------------------|
| 绘图: | JL | 05-20-2010 |
| 批准: | KX | 05-20-2010 |
| 第三角投影 | | 图纸格式发布日期 11-11-2011 图纸格式版本 H |
| 机密: 本图纸及相关信息所有权归REGAL-DELOIT CORPORATION. 未经REGAL-DELOIT CORPORATION书面授权, 不得泄露、复制、传播或作其他用途。—版权所有 | | |

| | |
|---------------------------------|----------------------------|
| REGAL-BELOIT CORPORATION | |
| 名称 | MODEL-CFHP-56FR OUTLINE |
| 图幅 | C |
| 图号 | H979L |
| 比例 | NONE |
| 页号 | 1 |