



**Goodman<sup>®</sup>**

PRODUCTS  
CATALOG



WHY PAY MORE?

**BETTER  
VALUE**

★★★★★  
EXCEPTIONAL QUALITY

### SPLIT SYSTEM AIR CONDITIONERS

DSXC18	Up to 18 SEER	6
DSXC16	Up to 16 SEER	7
GSX16	Up to 16 SEER	8
GSX13	Up to 14 SEER	9

### SPLIT SYSTEM HEAT PUMPS

DSZC18	Up to 18 SEER / 9.5 HSPF	10
DSZC16	Up to 16 SEER / 9.5 HSPF	11
SSZ16	Up to 16 SEER / 9.5 HSPF	12
SSZ14	Up to 14 SEER / 8.5 HSPF	13
GSZ13	Up to 14 SEER / 8.6 HSPF	14

### GAS FURNACES

GMVM96	Up to 96% AFUE	16
GCVM96	Up to 96% AFUE	17
GMVC95	Up to 96% AFUE	18
GCVC95	Up to 95% AFUE	19
GME95	Up to 96% AFUE	20
GMH95	Up to 96% AFUE	21
GCH95	Up to 95% AFUE	22
GKS9	Up to 92.1% AFUE	23
GMVC8	80% AFUE	24
GME8	80% AFUE	25
GMH8	80% AFUE	26
GDH8	80% AFUE	27
GMS8	80% AFUE	28
GDS8	80% AFUE	28
GHS8	80% AFUE	28

### PACKAGED UNITS

#### Air Conditioners

GPC14H	Up to 14 SEER	30
GPC13M	13 SEER	31
GPC13H	13 SEER	32

#### Heat Pumps

GPH15M	Up to 15 SEER / 8.0 HSPF	33
GPH14H	Up to 14 SEER / 8.0 HSPF	34
GPH13M	13 SEER / 8.0 HSPF	35
GPH13H	13 SEER / 7.7 HSPF	36

### PACKAGED UNITS (CONT.)

#### Gas/Electric Units

GPG15	Up to 15 SEER / 80% AFUE	37
GPG13M	13 SEER / 80% AFUE	38

#### Dual-Fuel Units

GPD14	Up to 14.5 SEER, 8.0 HSPF, 80% AFUE	39
-------	-------------------------------------	----

### AIR HANDLERS

AVPTC	42	ARUF	46
ASPT	43	MBVC/ MBR	47
ASUF	44	AWUF	48
ARPT	45	ACNF	49

### COILS

CAPT	50	CHPF	53
CAPF	51	CSCF	54
CAUF	52		

### CONTROLS & THERMOSTATS

ComfortNet™ Communicating Controls	56
TouchScreen Thermostats	58

### ACCESSORIES

Split System Air Conditioners & Heat Pumps	60
Gas Furnaces/ Expansion Valve Kit Match-ups	61
Packaged Units	62
Packaged Units — Heat Kit Match-Ups	64



### DAIKIN DUCTLESS SYSTEMS

KE Series	Up to 18 SEER / 8.5 HSPF	68
LV Series	Up to 24.5 SEER / 15.3 HSPF	69
Quaternity	Up to 26.1 SEER / 11.0 HSPF	71
MXS Series	Up to 19.5 SEER / 9.3 HSPF	72
SkyAir Series		74
Accessories		82
		84

# GOODMAN® BRAND — THE RIGHT CHOICE FOR MILLIONS AND MILLIONS OF PEOPLE

For over three decades, the Goodman® brand has concentrated on something more important than simple brand-recognition consumer advertising. And that's the design, engineering, and manufacture of dependable products that have helped millions and millions of homeowners achieve reliable, high-quality, and affordable indoor comfort. In addition, the Goodman brand has earned the loyalty and respect from thousands of local independent heating and cooling professionals across North America.

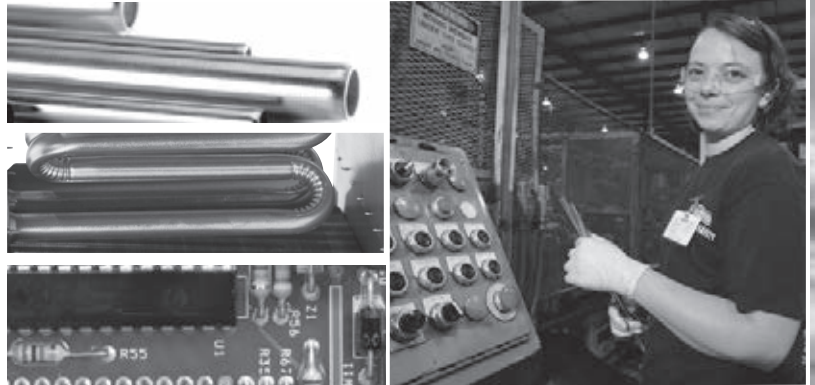
We believe that your local HVAC (Heating, Ventilation and Air Conditioning) professional knows best about your specific indoor comfort needs and indoor air quality solutions. When they recommend a Goodman brand product, rest assured that you and your family will soon be receiving great indoor comfort, at a refreshingly affordable price.

Independent HVAC contractors have access to a wide variety of heating and air conditioning brands. And they have to stand behind the brand that they recommend 100%, or suffer the consequences of unhappy customers.

Most homeowners have no idea of the brand name of their central heating and cooling system that is installed in their home. It's a purchase many homeowners make just once or twice in their life typically. And as luck would have it, it's usually on a very hot or very cold day. On the other hand, your local HVAC dealer recommends and installs Goodman brand heating and cooling systems every day!

## • Making the grade

And as further proof that the Goodman brand is making the grade with satisfied homeowners, it was awarded the A+ rating by the Better Business Bureau. This is the highest rating possible.

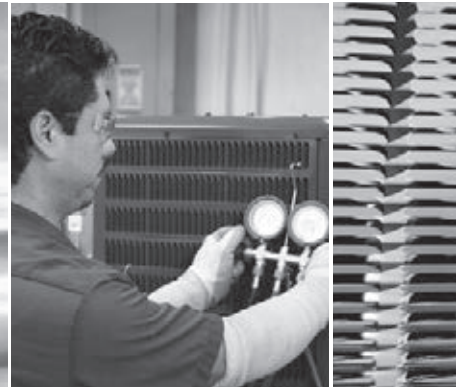


## • Time-tested Performance

The efficient movement of heat is a basic premise of the HVAC industry. Whether it's the removal of heat in conjunction with cooling products or the creation of heat for warmth, the HVAC world revolves around the thermodynamics of heat transfer. As your local HVAC dealer knows, the Goodman brand is recognized as a heat transfer expert. Investing in research and development is integral to the Goodman brand's success.

Look to it for a wide array of unique product features and enhancements that reinforce the durability and reliability of the entire Goodman brand product line, such as:

- the industry's only dual-diameter, tubular gas furnace heat exchanger, with a unique design that brings new meaning to durability;
- high-efficiency air conditioners and heat pumps with the Goodman brand's patented SmartCoil® condensing coil – the most advanced and efficient 5mm copper tube and aluminum fin combination available;
- ComfortNet™ Communicating Control systems that help high-efficiency systems run their absolute best and offer homeowners new levels of control and operational precision;
- unique All-Aluminum evaporator coils that help to eliminate a leading cause of premature copper evaporator coil failures;
- heat pumps that today offer homeowners new levels of control and operational precision;



- a full line of indoor air quality products that offer advanced filtration, humidification, ventilation, and purification for any home;
- high-performance commercial heating and cooling products and systems that are providing comfortable indoor environments for businesses, restaurants and stores from coast to coast.

- **Committed to Quality**

There's good reason that thousands of the nation's HVAC professionals recommend the Goodman brand. Dealers are completely comfortable that Goodman brand products will keep their customers satisfied and enhance their reputation. Goodman brand manufacturing facilities are ISO 9001-certified, an independent standard accepted worldwide as the benchmark for quality manufacturing and management processes, and ISO 14001-certified, an international environmental certification.

- **Trust the Experts**

When it comes to recommending a brand for your cooling and heating needs, your local HVAC professional knows best. After all, they are the experts, the ones in the field who can accurately evaluate your specific needs and solutions. You may not know the brand of brake pads your trusted mechanic installed, but you trust your mechanic to make your vehicle perform the way it was meant to. Each HVAC installation is unique, and your local, independent HVAC professional knows which HVAC brands are best suited to your specific indoor comfort needs.

So it's okay if you don't know about the Goodman® brand. Thousands of the country's most experienced heating and air conditioning professionals trust it to perform each and every day, year after year. Their recommendations have been keeping millions and millions of North American households comfortable since day one.

As Goodman CEO David Swift says, "We stay focused on a few basic goals: build more reliable, longer-lasting products than anyone else; make durable cooling and heating products and systems as affordable as possible and design everything for quick, trouble-free installations. Those values have led the Goodman brand this far and they will lead us into the future."

## GOODMAN® BRAND PRODUCT TECHNOLOGY



The ComfortNet™ Communicating Control System continuously monitors itself and your system. If it senses a problem developing, the control's home screen display will indicate "Call for Service" and CHECK (i.e., Furnace Heat pump, Air Conditioner, Air Handler) to identify an equipment fault. This alert prompts you to contact a qualified service technician.



The SmartShift™ Heat Pump Defrost Control helps to increase compressor reliability and reduces the noise level during heat pump systems defrost cycles. When outdoor temperatures fall below freezing and the heat pump is forced to initiate a defrost cycle, SmartShift™ simply turns off the compressor for 30 seconds allowing the system pressure to equalize and then it restarts the compressor. This seamless operation is triggered automatically eliminating unwanted noise caused by heat pump defrost changeover cycles.



At the core of our newly designed Air Handlers is the SmartFrame™ Inner skeleton. It adds lateral stability to the chassis, provides a mounting location for all internal components, and provides additional insulation retention. Our unique insulation retention solution eliminates all adhesives from the cabinet insulation, which is secured through mechanical means by the SmartFrame sub-structure and additional retaining rods strategically placed near the blower assembly.



The All Aluminum evaporator coil is constructed from aluminum tubing, fins and panels to give you a single metal solution for outstanding, time-test heat transfer performance properties. If you're looking for an evaporator coil that offers enhanced performance (as tested in Goodman brand labs), this is the product for you.

# SPLIT SYSTEMS



## DSXC18 — UP TO 18 SEER

MODEL	NOMINAL COOLING (TONS)	VOLTAGE-PHASE-HZ	DIMENSIONS			SERVICE VALVE		DBS	SHIP WEIGHT (LBS)
			W"	D"	H"	LIQUID	SUCTION		
DSXC180361A	3	208/230-1	35½	35½	38¼	¾"	¾"	71	272
DSXC180481A	4	208/230-1	35½	35½	38¼	¾"	¾"	72	327
DSXC180601A	5	208/230-1	35½	35½	38¼	¾"	¾"	74	338

Goodman Manufacturing Company, L.P., reserves the right to discontinue or change at any time specifications or designs without notice or without incurring obligations.

### Product Features



- R-410A chlorine-free refrigerant
- Two-stage scroll compressor
- High-density foam compressor sound blanket
- Expanded CoreSense™ diagnostics built in
- Diagnostic indicator lights and storage of 6 fault codes
- High- and low-pressure switches
- Fully charged for 15' of tubing length
- Factory-installed filter drier
- Coil and ambient temperature sensors
- AHRI Certified; ETL Listed
- Super-quiet ECM condenser fan motor
- Goodman brand sound control top design
- Wire fan discharge grille and steel louver coil guard
- Heavy-gauge galvanized-steel cabinet with baked-on powder-paint finish and 500-hour salt-spray approval
- When properly anchored, meets the 2010 Florida Building Code unit integrity requirements for hurricane-type winds (Anchor bracket kits available.)



\* Complete warranty details available from your dealer or at [www.goodmanmfg.com](http://www.goodmanmfg.com). To receive the Lifetime Compressor Limited Warranty (good for as long as you own your home), 10-Year Unit Replacement Limited Warranty, and 10-Year Parts Limited Warranty, online registration must be completed within 60 days of installation. Online registration is not required in California or Quebec.



**DSXC16 — UP TO 16 SEER**

MODEL	NOMINAL COOLING (TONS)	VOLTAGE-PHASE-HZ	DIMENSIONS			SERVICE VALVE		DBS	SHIP WEIGHT (LBS)
			W"	D"	H"	LIQUID	SUCTION		
DSXC160241**	2	208/230-1	29	29	38¼	¾"	¾"	71	198
DSXC160361**	3	208/230-1	29	29	38¼	¾"	¾"	71	202
DSXC160481**	4	208/230-1	35½	35½	38¼	¾"	¾"	74	241
DSXC160601**	5	208/230-1	35½	35½	38¼	¾"	¾"	75	301

*Goodman Manufacturing Company, L.P., reserves the right to discontinue or change at any time specifications or designs without notice or without incurring obligations.*

**Product Features**



- R-410A chlorine-free refrigerant
- Two-stage scroll compressor
- High-density foam compressor sound blanket
- Expanded CoreSense™ diagnostics built in
- Diagnostic indicator lights and storage of 6 fault codes
- High- and low-pressure switches
- Fully charged for 15' of tubing length
- Factory-installed filter drier
- Coil and ambient temperature sensors
- AHRI Certified; ETL Listed
- Two-speed super-quiet ECM condenser fan motor
- Goodman brand sound control top design
- Wire fan discharge grille and steel louver coil guard
- Heavy-gauge galvanized-steel cabinet with baked-on powder-paint finish and 500-hour salt-spray approval
- When properly anchored, meets the 2010 Florida Building Code unit integrity requirements for hurricane-type winds (Anchor bracket kits available.)



\* Complete warranty details available from your dealer or at [www.goodmanmfg.com](http://www.goodmanmfg.com). To receive the Lifetime Compressor Limited Warranty (good for as long as you own your home), 10-Year Unit Replacement Limited Warranty, and 10-Year Parts Limited Warranty, online registration must be completed within 60 days of installation. Online registration is not required in California or Quebec.

## GSX16 — UP TO 16 SEER

MODEL	NOMINAL COOLING (TONS)	VOLTAGE-PHASE-Hz	DIMENSIONS			SERVICE VALVE		DBS	SHIP WEIGHT (LBS)
			W"	D"	H"	LIQUID	SUCTION		
GSX160181F*	1.5	208/230-1	29	29	32½	¾"	¾"	73.5	163
GSX160241F*	2	208/230-1	29	29	32½	¾"	¾"	73.5	160
GSX160301F*	2.5	208/230-1	29	29	32½	¾"	¾"	73.5	167
GSX160361F*	3	208/230-1	29	29	36¼	¾"	¾"	73.5	180
GSX160421F*	3.5	208/230-1	35½	35½	36¼	¾"	¾"	75	228
GSX160481F*	4	208/230-1	35½	35½	36¼	¾"	¾"	75	241
GSX160601F*	5	208/230-1	35½	35½	38¼	¾"	¾"	75	301
GSX160611F*	5	208/230-1	35½	35½	38¼	¾"	¾"	75	314

Goodman Manufacturing Company, L.P., reserves the right to discontinue, or change at any time, specifications or designs without notice or without incurring obligations.



### Product Features

- Energy-efficient scroll compressor
- R-410A chlorine-free refrigerant
- Factory-installed filter drier
- Copper tube/aluminum fin coil
- Service valves with sweat connections and easy-to-access gauge ports
- AHRI Certified; ETL Listed
- Goodman® brand louvered sound control top design
- Steel louver coil guard
- Heavy-gauge galvanized-steel cabinet
- Attractive Architectural Gray powder-paint finish with 500-hour salt-spray approval
- Single-panel access to controls with space provided for field-installed accessories
- When properly anchored, meets the 2010 Florida Building Code unit integrity requirements for hurricane-type winds (Anchor bracket kits available.)



\* Complete warranty details available from you local dealer or at [www.goodmanmfg.com](http://www.goodmanmfg.com). To receive the 10-Year Compressor Limited Warranty and 10-Year Parts Limited Warranty, online registration must be completed within 60 days of installation. Online registration is not required in California or Quebec.

**GSX13 — UP TO 14 SEER**

MODEL	NOMINAL COOLING (TONS)	VOLTAGE-PHASE-Hz	DIMENSIONS			SERVICE VALVE		DBs	SHIP WEIGHT (LBS)
			W"	D"	H"	LIQUID	SUCTION		
GSX130181E*	1½	208/230-1	23	23	25¾	¾"	¾"	75	120
GSX130241D*	2	208/230-1	23	23	25¾	¾"	¾"	75	130
GSX130301B*	2½	208/230-1	26	26	27½	¾"	¾"	73	134
GSX130361E*	3	208/230-1	26	26	27½	¾"	¾"	74	157
GSX130421B*	3½	208/230-1	29	29	36¼	¾"	¾"	75	206
GSX130481B*	4	208/230-1	29	29	36¼	¾"	¾"	76	209
GSX130601B*	5	208/230-1	29	29	40	¾"	¾"	77	225
GSX130611A*	5	208/230-1	35½	35½	38¾	¾"	¾"	77	301

*Goodman Manufacturing Company, L.P., reserves the right to discontinue, or change at any time, specifications or designs without notice or without incurring obligations.*



**Product Features**

- R-410A chlorine-free refrigerant
- Energy-efficient compressor
- Factory-installed liquid line filter drier
- Copper tube/aluminum fin coil
- Brass liquid and suction line service valves
- AHRI Certified; ETL Listed
- Goodman brand sound control top design
- Heavy-gauge galvanized-steel cabinet with baked-on powder-paint finish and 500-hour salt-spray approval
- When properly anchored, meets the 2010 Florida Building Code unit integrity requirements for hurricane-type winds (Anchor bracket kits available.)



\* Complete warranty details available from you local dealer or at [www.goodmanmfg.com](http://www.goodmanmfg.com). To receive the 10-Year Compressor Limited Warranty and 10-Year Parts Limited Warranty, online registration must be completed within 60 days of installation. Online registration is not required in California or Quebec.

## DSZC18 — UP TO 18 SEER/UP TO 9.5 HSPF

MODEL	CAPACITIES (TONS)		VOLTAGE-PHASE	DIMENSIONS			SERVICE VALVE		DBs	SHIP WEIGHT (LBS)
	COOLING	HEATING		W"	D"	H"	LIQUID	SUCTION		
DSZC180361**	3	3	208/230-1	35½	35½	38¼	¾"	¾"	72	268
DSZC180481**	4	4	208/230-1	35½	35½	38¼	¾"	1¼"	73	330
DSZC180601**	5	5	208/230-1	35½	35½	38¼	¾"	1¼"	75	336

Goodman Manufacturing Company, L.P., reserves the right to discontinue, or change at any time, specifications or designs without notice or without incurring obligations.



### Product Features

- R-410A chlorine-free refrigerant
- Two-stage scroll compressor
- High-density foam compressor sound blanket
- Expanded CoreSense™ diagnostics built in
- SmartShift® technology with short-cycle protection
- Factory-installed bi-flow liquid-line filter drier
- Factory-installed compressor crankcase heater
- Factory-installed coil and ambient temperature sensors
- Factory-installed suction-line accumulator
- Factory-installed high-capacity muffler
- High- and low-pressure switches
- Super-quiet ECM condenser fan motor
- AHRI Certified; ETL Listed
- Goodman brand sound control top design
- Heavy-gauge galvanized-steel cabinet with baked-on powder-paint finish and 500-hour salt-spray approval
- When properly anchored, meets the 2010 Florida Building Code unit integrity requirements for hurricane-type winds (Anchor bracket kits available.)



\* Complete warranty details available from your dealer or at [www.goodmanmfg.com](http://www.goodmanmfg.com). To receive the Lifetime Compressor Limited Warranty (good for as long as you own your home), 10-Year Unit Replacement Limited Warranty, and 10-Year Parts Limited Warranty, online registration must be completed within 60 days of installation. Online registration is not required in California or Quebec.

**DSZC16 — UP TO 16 SEER/UP TO 9.5 HSPF**

MODEL	CAPACITIES (TONS)		VOLTAGE-PHASE	DIMENSIONS			SERVICE VALVE		DBS	SHIP WEIGHT (LBS)
	COOLING	HEATING		W"	D"	H"	LIQUID	SUCTION		
DSZC160241**	2	2	208/230-1	29	29	38¾	¾"	¾"	72	208
DSZC160361**	3	3	208/230-1	35½	35½	38¾	¾"	¾"	73	255
DSZC160481**	4	4	208/230-1	35½	35½	38¾	¾"	¾"	74	327
DSZC160601**	5	5	208/230-1	35½	35½	38¾	¾"	¾"	75	331

*Goodman Manufacturing Company, L.P., reserves the right to discontinue, or change at any time, specifications or designs without notice or without incurring obligations.*

**Product Features**



- R-410A chlorine-free refrigerant
- Two-stage scroll compressor
- High-density foam compressor sound blanket
- Expanded CoreSense™ diagnostics built in
- SmartShift® technology with short-cycle protection
- Factory-installed bi-flow liquid-line filter drier
- Factory-installed compressor crankcase heater
- Factory-installed coil and ambient temperature sensors
- Factory-installed suction-line accumulator
- Factory-installed high-capacity muffler
- High- and low-pressure switches
- Two-speed super-quiet ECM condenser fan motor
- AHRI Certified; ETL Listed
- Goodman brand sound control top design
- Heavy-gauge galvanized-steel cabinet with baked-on powder-paint finish and 500-hour salt-spray approval
- When properly anchored, meets the 2010 Florida Building Code unit integrity requirements for hurricane-type winds (Anchor bracket kits available.)



\* Complete warranty details available from your dealer or at [www.goodmanmfg.com](http://www.goodmanmfg.com). To receive the Lifetime Compressor Limited Warranty (good for as long as you own your home), 10-Year Unit Replacement Limited Warranty, and 10-Year Parts Limited Warranty, online registration must be completed within 60 days of installation. Online registration is not required in California or Quebec.

## SSZ16 — UP TO 16 SEER/UP TO 9.5 HSPF

MODEL	CAPACITIES (TONS)		VOLTAGE-PHASE	DIMENSIONS			SERVICE VALVE		DBS	SHIP WEIGHT (LBS)
	COOLING	HEATING		W"	D"	H"	LIQUID	SUCTION		
SSZ160241**	2	2	208/230-1	29	29	38½	¾"	¾"	70	208
SSZ160361**	3	3	208/230-1	35½	35½	38½	¾"	¾"	71	255
SSZ160481**	4	4	208/230-1	35½	35½	38½	¾"	¾"	72	327
SSZ160601**	5	5	208/230-1	35½	35½	38½	¾"	¾"	72	331

Goodman Manufacturing Company, L.P., reserves the right to discontinue, or change at any time, specifications or designs without notice or without incurring obligations.



### Product Features

- R-410A chlorine-free refrigerant
- Two-stage scroll compressor
- High-density foam compressor sound blanket
- Expanded CoreSense™ diagnostics built in
- SmartShift® technology with short-cycle protection
- Factory-installed bi-flow liquid-line filter drier
- Factory-installed compressor crankcase heater
- Factory-installed coil and ambient temperature sensors
- Factory-installed suction-line accumulator
- Factory-installed high-capacity muffler
- High- and low-pressure switches
- AHRI Certified; ETL Listed
- Goodman brand sound control top design
- Heavy-gauge galvanized-steel cabinet with baked-on powder-paint finish and 500-hour salt-spray approval
- When properly anchored, meets the 2010 Florida Building Code unit integrity requirements for hurricane-type winds (Anchor bracket kits available.)



\* Complete warranty details available from you local dealer or at [www.goodmanmfg.com](http://www.goodmanmfg.com). To receive the Lifetime Compressor Limited Warranty (good for as long as you own your home) and 10-Year Parts Limited Warranty, online registration must be completed within 60 days of installation. Online registration is not required in California or Quebec.

SSZ14 — UP TO 15 SEER/UP TO 8.5 HSPF

MODEL	CAPACITIES (TONS)		VOLTAGE-PHASE	DIMENSIONS			SERVICE VALVE		DBS	SHIP WEIGHT (LBS)
	COOLING	HEATING		W"	D"	H"	LIQUID	SUCTION		
SSZ140181**	1½	1½	208/230-1	29	29	34¼	¾"	¾"	70	191
SSZ140241**	2	2	208/230-1	29	29	38¼	¾"	¾"	72	201
SSZ140301**	2½	2½	208/230-1	29	29	38¼	¾"	¾"	72	203
SSZ140361**	3	3	208/230-1	29	29	38¼	¾"	¾"	74	210
SSZ140381**	3	3	208/230-0	35½	35½	38¼	¾"	¾"	73	253
SSZ140421**	3½	3½	208/230-1	35½	35½	38¼	¾"	¾"	73	268
SSZ140481**	4	4	208/230-1	35½	35½	34¼	¾"	¾"	74	300
SSZ140601**	5	5	208/230-1	35½	35½	38¼	¾"	¾"	75	314

Goodman Manufacturing Company, L.P., reserves the right to discontinue, or change at any time, specifications or designs without notice or without incurring obligations.

Product Features



- R-410A chlorine-free refrigerant
- High-efficiency scroll compressor
- High-density foam compressor sound blanket
- Expanded CoreSense™ diagnostics built in
- SmartShift® technology with short-cycle protection
- Factory-installed bi-flow liquid-line filter drier
- Factory-installed compressor crankcase heater
- Factory-installed coil and ambient temperature sensors
- Factory-installed suction-line accumulator
- Factory-installed high-capacity muffler
- High- and low-pressure switches
- AHRI Certified; ETL Listed
- Goodman brand sound control top design
- Heavy-gauge galvanized-steel cabinet with baked-on powder-paint finish and 500-hour salt-spray approval
- When properly anchored, meets the 2010 Florida Building Code unit integrity requirements for hurricane-type winds (Anchor bracket kits available.)



\* Complete warranty details available from you local dealer or at [www.goodmanmfg.com](http://www.goodmanmfg.com). To receive the Lifetime Compressor Limited Warranty (good for as long as you own your home) and 10-Year Parts Limited Warranty, online registration must be completed within 60 days of installation. Online registration is not required in California or Quebec.

## GSZ13 — UP TO 14 SEER / UP TO 8.6 HSPF

MODEL	CAPACITIES (TONS)		VOLTAGE-PHASE	DIMENSIONS			SERVICE VALVE		DBS	SHIP WEIGHT (LBS)
	COOLING	HEATING		W"	D"	H"	LIQUID	SUCTION		
GSZ130181**	1½	1½	208/230-1	26	26	32¼	⅜"	¼"	71	162
GSZ130241**	2	2	208/230-1	26	26	32¼	⅜"	¼"	73	153
GSZ130301**	2½	2½	208/230-1	26	26	32¼	⅜"	¼"	72	159
GSZ130361**	3	3	208/230-1	29	29	32¼	⅜"	¼"	74	174
GSZ130421**	3½	3½	208/230-1	29	29	38¼	⅜"	⅝"	74	220
GSZ130481**	4	4	208/230-1	29	29	34¼	⅜"	⅝"	76	237
GSZ130601**	5	5	208/230-1	35½	35½	34¼	⅜"	⅝"	75	290

Goodman Manufacturing Company, L.P., reserves the right to discontinue, or change at any time, specifications or designs without notice or without incurring obligations.



### Product Features

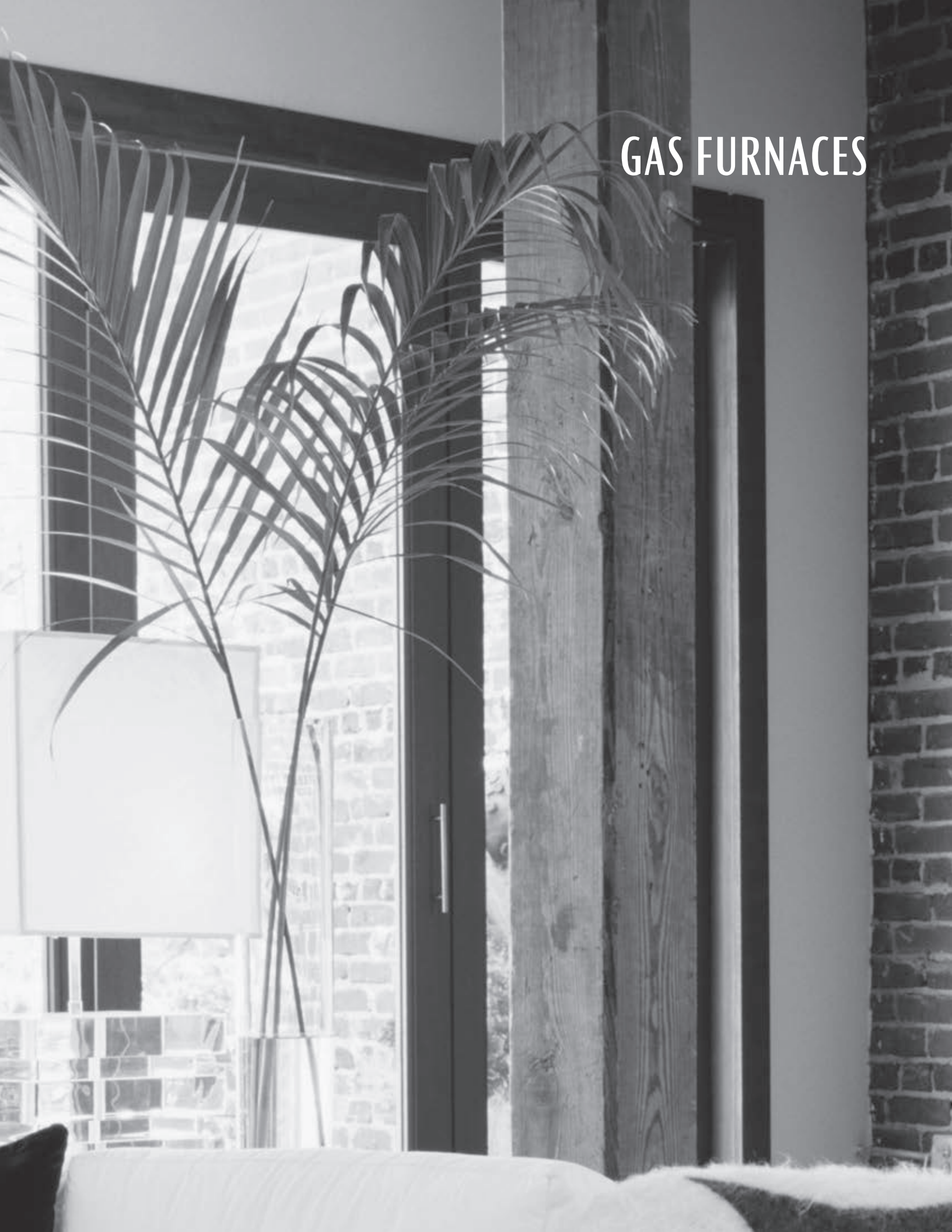
- R-410A chlorine-free refrigerant
- Energy-efficient compressor
- SmartShift® technology to ensure quiet reliable defrost
- Factory-installed bi-flow liquid-line-filter drier
- Factory-installed suction-line accumulator
- Factory-installed compressor crankcase heater
- Factory-installed high-capacity muffler
- High- and low-pressure switches
- Copper tube/ enhanced aluminum fin coil
- Special-order long line set high-rise models available; see website for details.
- AHRI Certified; ETL Listed
- Goodman brand sound control top design
- Heavy-gauge galvanized-steel cabinet with baked-on powder-paint finish and 500-hour salt-spray approval
- When properly anchored, meets the 2010 Florida Building Code unit integrity requirements for hurricane-type winds (Anchor bracket kits available.)



\* Complete warranty details available from your local dealer or at [www.goodmanmfg.com](http://www.goodmanmfg.com). To receive the 10-Year Parts Limited Warranty, online registration must be completed within 60 days of installation. Online registration is not required in California or Quebec.



# GAS FURNACES



## GMVM96 — MODULATING, VARIABLE-SPEED ECM GAS FURNACE / UP TO 96% AFUE

MODEL	HIGH FIRE HEATING <sup>1</sup>		LOW FIRE HEATING <sup>1</sup>		AFUE %	TONS A/C <sup>2</sup>	DIMENSIONS			SHIP WEIGHT (LBS)
	INPUT	OUTPUT	INPUT	OUTPUT			W"	D"	H"	
GMVM960603BXB*	60,000	57,600	30,000	28,800	96	1½ - 3	17½	28¾	40¾	135
GMVM960805CXB*	80,000	76,800	40,000	38,400	96	2 - 5	21	28¾	40¾	145
GMVM961005DXB*	100,000	96,000	50,000	48,000	96	2 - 5	24¾	28¾	40¾	170
GMVM961155DXB*	115,000	109,250	57,500	54,625	95	2 - 5	24¾	28¾	40¾	170

<sup>1</sup> BTU/h <sup>2</sup> Max tons @ 0.5" ESP

Goodman Manufacturing Company, L.P., reserves the right to discontinue, or change at any time, specifications or designs without notice or without incurring obligations.



### Product Features

- Multi-position installation: upflow, horizontal left or right
- Heavy-duty aluminized-steel dual-diameter, tubular heat exchanger
- Stainless-steel secondary heat exchanger
- Self-calibrating modulating gas valve auto-configures for each installation
- Durable Silicon Nitride igniter
- Quiet variable-speed induced draft blower
- Uses ComfortNet™ communicating, two-stage or single-stage controls
- Self-diagnostic control board with constant memory fault code history output to a dual 7-segment display
- Color-coded low-voltage terminals with provisions for electronic air cleaner and humidifier
- Efficient and quiet variable-speed airflow system gently ramps up or down according to heating or cooling demand
- Auto-Comfort and enhanced dehumidification modes available
- All models comply with California Low NOx emissions standards
- Certified for direct vent (2-pipe) or non-direct vent (1-pipe)
- Easy-to-install top venting with optional side venting
- Convenient left or right connection for gas and electrical service
- Cabinet air leakage ( $Q_{Leak} \leq 2\%$ )
- Heavy-gauge steel cabinet with durable baked-enamel finish
- Fully insulated heat exchanger and blower section



\* Complete warranty details available from your local dealer or at [www.goodmanmfg.com](http://www.goodmanmfg.com). To receive the Lifetime Heat Exchanger Limited Warranty (good for as long as you own your home), 10-Year Unit Replacement Heat Exchanger Limited Warranty, and 10-Year Parts Limited Warranty, online registration must be completed within 60 days of installation. Online registration is not required in California or Quebec.

## GCVM96 — MODULATING, VARIABLE-SPEED ECM GAS FURNACE / UP TO 96% AFUE

MODEL	HIGH FIRE HEATING <sup>1</sup>		LOW FIRE HEATING <sup>1</sup>		AFUE %	TONS A/C <sup>2</sup>	DIMENSIONS			SHIP WEIGHT (LBS)
	INPUT	OUTPUT	INPUT	OUTPUT			W"	D"	H"	
GCVM960604CXB*	60,000	57,600	30,000	28,800	96	1.5-4.0	21	28%	40%	139
GCVM960805DXB*	80,000	76,800	40,000	38,400	96	2.0-5.0	24½	28%	40%	160
GCVM961005DXB*	100,000	95,000	50,000	47,500	95	2.0-5.0	24½	28%	40%	165

<sup>1</sup> BTU/h <sup>2</sup> Max tons @ 0.5" ESP

Goodman Manufacturing Company, L.P., reserves the right to discontinue, or change at any time, specifications or designs without notice or without incurring obligations.

### Product Features

- Multi-position installation: downflow, horizontal left or right
- Heavy-duty aluminized-steel dual-diameter, tubular heat exchanger
- Stainless-steel secondary heat exchanger
- Self-calibrating modulating gas valve auto-configures for each installation
- Durable Silicon Nitride igniter
- Quiet variable-speed induced draft blower
- Uses ComfortNet™ communicating, two-stage or single-stage controls
- Self-diagnostic control board with constant memory fault code history output to a dual 7-segment display
- Color-coded low-voltage terminals with provisions for electronic air cleaner and humidifier
- Efficient and quiet variable-speed airflow system gently ramps up or down according to heating or cooling demand
- Auto-Comfort and enhanced dehumidification modes available
- All models comply with California Low NOx emissions standards
- Certified for direct vent (2-pipe) or non-direct vent (1-pipe)
- Easy-to-install top venting with optional side venting
- Convenient left or right connection for gas and electrical service
- Cabinet air leakage ( $Q_{Leak} \leq 2\%$ )
- Heavy-gauge steel cabinet with durable baked-enamel finish
- Fully insulated heat exchanger and blower section



\* Complete warranty details available from your local dealer or at [www.goodmanmfg.com](http://www.goodmanmfg.com). To receive the Lifetime Heat Exchanger Limited Warranty (good for as long as you own your home), 10-Year Unit Replacement Heat Exchanger Limited Warranty, and 10-Year Parts Limited Warranty, online registration must be completed within 60 days of installation. Online registration is not required in California or Quebec.

## GMVC95 — TWO-STAGE, VARIABLE-SPEED ECM GAS FURNACE / UP TO 96% AFUE

MODEL	HIGH FIRE HEATING <sup>1</sup>		LOW FIRE HEATING <sup>1</sup>		AFUE %	TONS A/C <sup>2</sup>	DIMENSIONS			SHIP WEIGHT (LBS)
	INPUT	OUTPUT	INPUT	OUTPUT			W"	D"	H"	
GMVC950453BxB*	45,000	43,200	31,500	30,300	96	1½ - 3	17½	28¾	40	123
GMVC950704CXB*	68,000	65,300	47,600	45,700	96	1½ - 4	21	28¾	40	142
GMVC950905CXB*	90,000	86,500	63,000	60,500	96	2 - 5	24½	28¾	40	150
GMVC950905DXB*	90,000	86,500	63,000	60,500	96	2 - 5	24½	28¾	40	155
GMVC951155DXB*	113,000	108,600	79,100	76,000	96	2 - 5	24½	28¾	40	165

<sup>1</sup> BTU/h <sup>2</sup> Max tons @ 0.5" ESP

Goodman Manufacturing Company, L.P., reserves the right to discontinue, or change at any time, specifications or designs without notice or without incurring obligations.



### Product Features

- Multi-position installation: upflow, horizontal left or right
- Heavy-duty aluminized-steel dual-diameter, tubular heat exchanger
- Stainless-steel secondary heat exchanger
- Two-stage gas valve provides quiet, economical heating
- Durable Silicon Nitride igniter
- Quiet two-speed induced draft blower
- Uses ComfortNet™ communicating, two-stage or single-stage controls
- Self-diagnostic control board with constant memory fault code history output to a dual 7-segment display
- Color-coded low-voltage terminals with provisions for electronic air cleaner and humidifier
- Multiple continuous fan speed options offer quiet air circulation
- Efficient and quiet variable-speed airflow system gently ramps up or down according to heating or cooling demand
- Auto-Comfort and enhanced dehumidification modes available
- All models comply with California Low NOx emissions standards
- Certified for direct vent (2-pipe) or non-direct vent (1-pipe)
- Easy-to-install top venting with optional side venting
- Convenient left or right connection for gas and electrical service
- Cabinet air leakage ( $Q_{Leak} \leq 2\%$ )
- Heavy-gauge steel cabinet with durable baked-enamel finish
- Fully insulated heat exchanger and blower section



\* Complete warranty details available from your local dealer or at [www.goodmanmfg.com](http://www.goodmanmfg.com). To receive the Lifetime Heat Exchanger Limited Warranty (good for as long as you own your home), 10-Year Unit Replacement Heat Exchanger Limited Warranty, and 10-Year Parts Limited Warranty, online registration must be completed within 60 days of installation. Online registration is not required in California or Quebec.

## GCVC95 — TWO-STAGE, VARIABLE-SPEED ECM GAS FURNACE / UP TO 95% AFUE

MODEL	HIGH FIRE HEATING <sup>1</sup>		LOW FIRE HEATING <sup>1</sup>		AFUE %	TONS A/C <sup>2</sup>	DIMENSIONS			SHIP WEIGHT (LBS)
	INPUT	OUTPUT	INPUT	OUTPUT			W"	D"	H"	
GCVC950714CXA*	68,000	64,600	47,600	45,200	95	1.5 - 4.0	21	28¾	40	158
GCVC950915DXA*	90,000	85,500	63,000	59,900	95	2.0 - 5.0	24¾	28¾	40	165
GCVC91155DXA*	113,000	105,100	79,100	73,600	93	2.0 - 5.0	24¾	28¾	40	160

<sup>1</sup> BTU/h <sup>2</sup> Max tons @ 0.5" ESP

Goodman Manufacturing Company, L.P., reserves the right to discontinue, or change at any time, specifications or designs without notice or without incurring obligations.

### Product Features

- Multi-position installation: downflow, horizontal left or right
- Heavy-duty aluminized-steel dual-diameter, tubular heat exchanger
- Stainless-steel secondary heat exchanger
- Two-stage gas valve provides quiet, economical heating
- Durable Silicon Nitride igniter
- Quiet two-speed induced draft blower
- Uses ComfortNet™ communicating, two-stage or single-stage controls
- Self-diagnostic control board with constant memory fault code history output to a dual 7-segment display
- Color-coded low-voltage terminals with provisions for electronic air cleaner and humidifier
- Multiple continuous fan speed options offer quiet air circulation
- Efficient and quiet variable-speed airflow system gently ramps up or down according to heating or cooling demand
- Auto-Comfort and enhanced dehumidification modes available
- All models comply with California Low NOx emissions standards
- Certified for direct vent (2-pipe) or non-direct vent (1-pipe)
- Easy-to-install top venting with optional side venting
- Convenient left or right connection for gas and electrical service
- Cabinet air leakage ( $Q_{Leak} \leq 2\%$ )
- Heavy-gauge steel cabinet with durable baked-enamel finish
- Fully insulated heat exchanger and blower section



\* Complete warranty details available from your local dealer or at [www.goodmanmfg.com](http://www.goodmanmfg.com). To receive the Lifetime Heat Exchanger Limited Warranty (good for as long as you own your home), 10-Year Unit Replacement Heat Exchanger Limited Warranty, and 10-Year Parts Limited Warranty, online registration must be completed within 60 days of installation. Online registration is not required in California or Quebec.

**GME95 — Two-Stage Convertible, Multi-Speed ECM Gas Furnace / UP TO 96% AFUE**

MODEL	HEATING CAPACITY <sup>1</sup>		AFUE %	TONS A/C <sup>2</sup>	DIMENSIONS			SHIP WEIGHT (LBS)
	INPUT	OUTPUT			W"	D"	H"	
GME950403BXA*	40,000	38,000	96	3	17½	28	40	120
GME950603BXA*	60,000	57,000	96	3	17½	28	40	124
GME950805CXA*	80,000	76,000	96	5	21	28	40	144
GME951005DXA*	100,000	95,000	96	5	24½	28	40	162

<sup>1</sup> BTU/h <sup>2</sup> Max tons @ 0.5" ESP  
 Goodman Manufacturing Company, L.P., reserves the right to discontinue, or change at any time, specifications or designs without notice or without incurring obligations.



**Product Features**

- Multi-position installation: upflow, horizontal left or right
- Energy-efficient multi-speed ECM blower motor
- Heavy-duty aluminized-steel dual-diameter, tubular heat exchanger
- Stainless-steel secondary heat exchanger
- Two-stage convertible gas valve automatically adjust to high or low stage
- Durable Silicon Nitride igniter
- Self-diagnostic control board with constant memory fault code
- Color-coded low-voltage terminals with provisions for electronic air cleaner and humidifier
- Quiet single-speed draft inducer
- Low continuous fan speed options offer quiet air circulation
- All models comply with California Low NOx emissions standards
- Certified for direct vent (2-pipe) or non-direct vent (1-pipe)
- Easy-to-install top venting with optional side venting
- Convenient left or right connection for gas and electrical service
- Cabinet air leakage (Q<sub>Leak</sub>) ≤ 2%
- Heavy-gauge steel cabinet with durable baked-enamel finish
- Fully insulated heat exchanger and blower section



\* Complete warranty details available from your local dealer or at [www.goodmanmfg.com](http://www.goodmanmfg.com). To receive the Lifetime Heat Exchanger Limited Warranty (good for as long as you own your home), 10-Year Unit Replacement Heat Exchanger Limited Warranty, and 10-Year Parts Limited Warranty, online registration must be completed within 60 days of installation. Online registration is not required in California or Quebec.

## GMH95 — TWO-STAGE CONVERTIBLE, MULTI-SPEED GAS FURNACE / UP TO 96% AFUE

MODEL	HEATING CAPACITY <sup>1</sup>		AFUE %	TONS A/C <sup>2</sup>	DIMENSIONS			SHIP WEIGHT (LBS)
	INPUT	OUTPUT			W"	D"	H"	
GMH950453BXA*	46,000	44,200	96	3	17½	28	40	120
GMH950703BXA*	69,000	66,300	96	3	17½	28	40	123
GMH950704CXA*	69,000	66,300	96	4	21	28	40	125
GMH950904CXA*	92,000	88,400	96	4	21	28	40	144
GMH950905CXA*	92,000	88,400	96	5	21	28	40	146
GMH951155DXA*	115,000	110,500	96	5	24½	28	40	163

<sup>1</sup> BTU/h <sup>2</sup> Max tons @ 0.5" ESP

Goodman Manufacturing Company, L.P., reserves the right to discontinue, or change at any time, specifications or designs without notice or without incurring obligations.

### Product Features

- Multi-position installation: upflow, horizontal left or right
- Heavy-duty aluminized-steel dual-diameter, tubular heat exchanger
- Stainless-steel secondary heat exchanger
- Two-stage convertible gas valve automatically adjust to high or low stage
- Durable Silicon Nitride igniter
- Quiet single-speed draft inducer
- Self-diagnostic control board with constant memory fault code
- Color-coded low-voltage terminals with provisions for electronic air cleaner and humidifier
- Multi-speed blower motor
- Low continuous fan speed options offer quiet air circulation
- All models comply with California Low NOx emissions standards
- Certified for direct vent (2-pipe) or non-direct vent (1-pipe)
- Easy-to-install top venting with optional side venting
- Convenient left or right connection for gas and electrical service
- Cabinet air leakage ( $Q_{Leak} \leq 2\%$ )
- Heavy-gauge steel cabinet with durable baked-enamel finish
- Fully insulated heat exchanger and blower section



\* Complete warranty details available from your local dealer or at [www.goodmanmfg.com](http://www.goodmanmfg.com). To receive the Lifetime Heat Exchanger Limited Warranty (good for as long as you own your home), 10-Year Unit Replacement Heat Exchanger Limited Warranty, and 10-Year Parts Limited Warranty, online registration must be completed within 60 days of installation. Online registration is not required in California or Quebec.

## GCH95 — TWO-STAGE CONVERTIBLE, MULTI-SPEED GAS FURNACE / UP TO 95% AFUE

MODEL	HEATING CAPACITY <sup>1</sup>		AFUE %	TONS A/C <sup>2</sup>	DIMENSIONS			SHIP WEIGHT (LBS)
	INPUT	OUTPUT			W"	D"	H"	
GCH950453BXA*	46,000	44,400	95	3	17½	28	40	120
GCH950703BXA*	69,000	66,300	95	3	17½	28	40	123
GCH950704CXA*	69,000	66,300	95	4	21	28	40	125
GCH950904CXA*	92,000	88,400	95	4	21	28	40	144
GCH950905DXA*	92,000	88,400	95	5	21	28	40	146
GCH951155DXA*	115,000	110,500	93	5	24½	28	40	163

<sup>1</sup> BTU/h <sup>2</sup> Max tons @ 0.5" ESP

Goodman Manufacturing Company, L.P., reserves the right to discontinue, or change at any time, specifications or designs without notice or without incurring obligations.



### Product Features

- Multi-position installation: downflow, horizontal left or right
- Heavy-duty aluminized-steel dual-diameter, tubular heat exchanger
- Stainless-steel secondary heat exchanger
- Two-stage convertible gas valve automatically adjust to high or low stage
- Durable Silicon Nitride igniter
- Quiet single-speed draft inducer
- Self-diagnostic control board with constant memory fault code
- Color-coded low-voltage terminals with provisions for electronic air cleaner and humidifier
- Multi-speed blower motor
- Low continuous fan speed options offer quiet air circulation
- All models comply with California Low NOx emissions standards
- Certified for direct vent (2-pipe) or non-direct vent (1-pipe)
- Easy-to-install top venting with optional side venting
- Convenient left or right connection for gas and electrical service
- Cabinet air leakage ( $Q_{Leak} \leq 2\%$ )
- Heavy-gauge steel cabinet with durable baked-enamel finish
- Fully insulated heat exchanger and blower section



\* Complete warranty details available from your local dealer or at [www.goodmanmfg.com](http://www.goodmanmfg.com). To receive the Lifetime Heat Exchanger Limited Warranty (good for as long as you own your home), 10-Year Unit Replacement Heat Exchanger Limited Warranty, and 10-Year Parts Limited Warranty, online registration must be completed within 60 days of installation. Online registration is not required in California or Quebec.



**GKS9 — SINGLE-STAGE MULTI-SPEED GAS FURNACE / UP TO 92.1% AFUE**

MODEL	HEATING CAPACITY <sup>1</sup>		AFUE %	TONS A/C <sup>2</sup>	DIMENSIONS			SHIP WEIGHT (LBS)
	INPUT	OUTPUT			W"	D"	H"	
GKS90453BXA*	46,000	42,800	92.1	3	17½	28	40	132
GKS90703BXA*	69,000	64,400	92.1	3	17½	28	40	135
GKS90704CXA*	69,000	64,400	92.1	4	21	28	40	153
GKS90904CXA*	92,000	86,000	92.1	4	21	28	40	158
GKS90905DXA*	92,000	86,000	92.1	5	24½	28	40	170
GKS91155DXA*	115,000	106,500	92.1	5	24½	28	40	175

<sup>1</sup> BTU/h <sup>2</sup> Max tons @ 0.5" ESP

Goodman Manufacturing Company, L.P., reserves the right to discontinue, or change at any time, specifications or designs without notice or without incurring obligations.

**Product Features**

- Multi-position installation: upflow; convertible to horizontal left or right with kit
- Heavy-duty aluminized-steel, dual-diameter, tubular heat exchanger
- Stainless-steel secondary heat exchanger
- Single-stage gas valve
- Durable Hot-surface igniter
- Quiet, single-speed draft induced
- Self-diagnostic control board
- Color-coded low-voltage terminals
- Multi-speed blower motor
- All models comply with California Low NOx emissions standards
- Certified for direct vent (2-pipe) or non-direct venting
- Easy-to-install top venting with optional side venting
- Convenient left or right connection for gas and electrical service
- Cabinet air leakage ( $Q_{Leak} \leq 2\%$ )
- Heavy-gauge steel cabinet with durable baked-enamel finish
- Foil-faced insulated heat exchanger



\* Complete warranty details available from your local dealer or at [www.goodmanmfg.com](http://www.goodmanmfg.com). To receive the Lifetime Heat Exchanger Limited Warranty (good for as long as you own your home) and 10-Year Parts Limited Warranty, online registration must be completed within 60 days of installation. Online registration is not required in California or Quebec.

## GMVC8 — TWO-STAGE, VARIABLE-SPEED GAS FURNACE / 80% AFUE

MODEL	HIGH FIRE HEATING <sup>1</sup>		LOW FIRE HEATING <sup>1</sup>		AFUE %	TONS A/C <sup>2</sup>	DIMENSIONS			SHIP WEIGHT (LBS)
	INPUT	OUTPUT	INPUT	OUTPUT			W"	D"	H"	
GMVC80604B*B*	60,000	48,000	42,000	33,600	80	1½ to 4	17½	28¾	33¾	152
GMVC80805C*B*	80,000	64,000	56,000	44,800	80	2 to 5	21	28¾	33¾	178
GMVC81005C*B*	100,000	80,000	70,000	56,000	80	2 to 5	21	28¾	33¾	194

<sup>1</sup> BTU/h    <sup>2</sup> Max tons @ 0.5" ESP

Goodman Manufacturing Company, L.P., reserves the right to discontinue, or change at any time, specifications or designs without notice or without incurring obligations.

### Product Features



- Multi-position installation: upflow, horizontal left or right
- Heavy-duty aluminized-steel dual-diameter, tubular heat exchanger
- Two-stage gas valve provides quiet, economical heating
- Durable Silicon Nitride igniter
- Quiet two-speed induced draft blower
- Uses ComfortNet™ communicating, two-stage or single-stage thermostats
- Self-diagnostic control board with constant memory fault code history output to a dual 7-segment display
- Efficient and quiet variable-speed airflow system gently ramps up or down according to heating or cooling demand
- Color-coded low-voltage terminals with provisions for electronic air cleaner and humidifier
- Multiple continuous fan speed options offer quiet air circulation
- Auto-Comfort and enhanced dehumidification modes available
- California Low NOx emissions standards models available
- Convenient left or right connection for gas and electrical service
- Heavy-gauge steel cabinet with durable baked-enamel finish
- Cabinet air leakage ( $Q_{Leak} \leq 2\%$ )
- Fully insulated heat exchanger and blower section



\* Complete warranty details available from your local dealer or at [www.goodmanmfg.com](http://www.goodmanmfg.com). To receive the Lifetime Heat Exchanger Limited Warranty (good for as long as you own your home), 10-Year Unit Replacement Heat Exchanger Limited Warranty, and 10-Year Parts Limited Warranty, online registration must be completed within 60 days of installation. Online registration is not required in California or Quebec.

## GME8 — Two-Stage Convertible, Multi-Speed ECM Gas Furnace / 80% AFUE

MODEL	HEATING CAPACITY <sup>1</sup>		AFUE %	TONS A/C <sup>2</sup>	DIMENSIONS			SHIP WEIGHT (LBS)
	INPUT	OUTPUT			W"	D"	H"	
GME80603B*B*	60,000	48,000	80	3	17½	28¾	33¾	98
GME80805C*B*	80,000	64,000	80	5	21	28¾	33¾	116
GME80805D*A*	80,000	64,000	80	5	21	28¾	33¾	123
GME81005C*B*	100,000	80,000	80	5	21	28¾	33¾	120

<sup>1</sup> BTU/h <sup>2</sup> Max tons @ 0.5" ESP

Goodman Company, L.P., reserves the right to discontinue, or change at any time, specifications or designs without notice or without incurring obligations.

### Product Features

- Multi-position installation: upflow, horizontal left or right with kit
- Energy-efficient multi-speed ECM blower motor
- Heavy-duty aluminized steel dual-diameter, tubular heat exchanger
- Two-stage convertible gas valve automatically adjust to high or low stage
- Durable Silicon Nitride igniter
- Quiet single-speed draft inducer
- Self-diagnostic control board with constant memory fault code
- Multi-speed blower motor
- Color-coded low-voltage terminals with provisions for electronic air cleaner and humidifier
- Low continuous fan speed options offer quiet air circulation
- California Low NOx emissions standards models available
- Convenient left or right connection for gas and electrical service
- Heavy-gauge steel cabinet with durable baked-enamel finish
- Cabinet air leakage ( $Q_{Leak}$ )  $\leq$  2%
- Fully insulated heat exchanger and blower section



\* Complete warranty details available from your local dealer or at [www.goodmanmfg.com](http://www.goodmanmfg.com). To receive the Lifetime Heat Exchanger Limited Warranty (good for as long as you own your home), 10-Year Unit Replacement Heat Exchanger Limited Warranty, and 10-Year Parts Limited Warranty, online registration must be completed within 60 days of installation. Online registration is not required in California or Quebec.

**GMH8 — TWO-STAGE CONVERTIBLE, MULTI-SPEED GAS FURNACE / 80% AFUE**

MODEL	HEATING CAPACITY <sup>1</sup>		AFUE %	TONS A/C <sup>2</sup>	DIMENSIONS			SHIP WEIGHT (LBS)
	INPUT	OUTPUT			W"	D"	H"	
GMH80403A*B*	40,000	32,000	80	3	14	28¾	33¾	115
GMH80603A*B*	60,000	48,000	80	3	14	28¾	33¾	125
GMH80604B*B*	60,000	48,000	80	4	17½	28¾	33¾	136
GMH80803B*B*	80,000	64,000	80	3	17½	28¾	33¾	146
GMH80804B*B*	80,000	64,000	80	4	17½	28¾	33¾	146
GMH80805C*B*	80,000	64,000	80	5	21	28¾	33¾	154
GMH81005C*B*	100,000	80,000	80	5	21	28¾	33¾	154
GMH81205D*B*	120,000	96,000	80	5	24½	28¾	33¾	163
GMH81405D*B*	140,000	112,000	80	5	24½	28¾	33¾	163

<sup>1</sup> BTU/h <sup>2</sup> Max tons @ 0.5" ESP

Goodman Manufacturing Company, L.P., reserves the right to discontinue, or change at any time, specifications or designs without notice or without incurring obligations.



**Product Features**

- Multi-position installation: upflow, horizontal left or right
- Heavy-duty aluminized-steel dual-diameter, tubular heat exchanger
- Two-stage convertible gas valve automatically adjust to high or low stage
- Durable Silicon Nitride igniter
- Quiet single-speed draft inducer
- Color-coded low-voltage terminals with provisions for electronic air cleaner and humidifier
- Multi-speed blower motor
- Self-diagnostic control board with constant memory fault code
- Low continuous fan speed options offer quiet air circulation
- California Low NOx emissions standards models available
- Convenient left or right connection for gas and electrical service
- Heavy-gauge steel cabinet with durable baked-enamel finish
- Cabinet air leakage (Q<sub>Leak</sub>) ≤ 2%
- Fully insulated heat exchanger and blower section



\* Complete warranty details available from your local dealer or at [www.goodmanmfg.com](http://www.goodmanmfg.com). To receive the Lifetime Heat Exchanger Limited Warranty (good for as long as you own your home), 10-Year Unit Replacement Heat Exchanger Limited Warranty, and 10-Year Parts Limited Warranty, online registration must be completed within 60 days of installation. Online registration is not required in California or Quebec.

## GDH8 — TWO-STAGE CONVERTIBLE, MULTI-SPEED GAS FURNACE / 80% AFUE

MODEL	HEATING CAPACITY <sup>1</sup>		AFUE %	TONS A/C <sup>2</sup>	DIMENSIONS			SHIP WEIGHT (LBS)
	INPUT	OUTPUT			W"	D"	H"	
GDH80403A*B*	40,000	32,000	80	3	14	28¾	33¾	88
GDH80603A*B*	60,000	48,000	80	3	14	28¾	33¾	92
GDH80804B*B*	80,000	64,000	80	4	17½	28¾	33¾	106
GDH81005C*B*	100,000	80,000	80	5	21	28¾	33¾	114

<sup>1</sup> BTU/h <sup>2</sup> Max tons @ 0.5" ESP

Goodman Manufacturing Company, L.P., reserves the right to discontinue, or change at any time, specifications or designs without notice or without incurring obligations.

### Product Features

- Installation position: dedicated downflow
- Heavy-duty aluminized-steel dual-diameter, tubular heat exchanger
- Two-stage convertible gas valve automatically adjust to high or low stage
- Durable Silicon Nitride igniter
- Quiet single-speed draft inducer
- Color-coded low-voltage terminals with provisions for electronic air cleaner and humidifier
- Multi-speed blower motor
- Self-diagnostic control board with constant memory fault code
- Low continuous fan speed options offer quiet air circulation
- California Low NOx emissions standards models available
- Convenient left or right connection for gas and electrical service
- Heavy-gauge steel cabinet with durable baked-enamel finish
- Cabinet air leakage ( $Q_{Leak} \leq 2\%$ )
- Fully insulated heat exchanger and blower section



\* Complete warranty details available from your local dealer or at [www.goodmanmfg.com](http://www.goodmanmfg.com). To receive the Lifetime Heat Exchanger Limited Warranty (good for as long as you own your home), 10-Year Unit Replacement Heat Exchanger Limited Warranty, and 10-Year Parts Limited Warranty, online registration must be completed within 60 days of installation. Online registration is not required in California or Quebec.

## GMS8/GHS8/GDS8 — SINGLE-STAGE, MULTI-SPEED GAS FURNACE / 80% AFUE

MODEL	HEATING CAPACITY <sup>1</sup>		AFUE %	TONS A/C <sup>2</sup>	DIMENSIONS			SHIP WEIGHT (LBS)
	INPUT	OUTPUT			W"	D"	H"	
GMS80403A*B*	40,000	32,000	80	3	14	28%	33%	84
GMS80603A*B*	60,000	48,000	80	3	14	28%	33%	88
GMS80604B*B*	60,000	48,000	80	4	17½	28%	33%	98
GMS80804B*B*	80,000	64,000	80	4	17½	28%	33%	106
GMS80805C*B*	80,000	64,000	80	5	21	28%	33%	114
GMS81005C*B*	100,000	80,000	80	5	21	28%	33%	118
GMS81205D*B*	120,000	96,000	80	5	24½	28%	33%	130
GMS81405DNC*	140,000	112,000	80	5	24½	28%	33%	130
GHS80403AXB*	40,000	32,000	80	3	14	28%	33%	90
GHS80604BXB*	60,000	48,000	80	4	17½	28%	33%	102
GHS80805CXB*	80,000	64,000	80	5	21½	28%	33%	117
GDS80403A*B*	40,000	32,000	80	3	14	28%	33%	88
GDS80603A*B*	60,000	48,000	80	3	14	28%	33%	92
GDS80804B*B*	80,000	64,000	80	4	17½	28%	33%	105
GDS81005C*B*	100,000	80,000	80	5	21	28%	33%	113

<sup>1</sup> BTU/h <sup>2</sup> Max tons @ 0.5" ESP

Goodman Manufacturing Company, L.P., reserves the right to discontinue, or change at any time, specifications or designs without notice or without incurring obligations.



### Product Features

- Multi-position installation:
  - ◇ GMS8/GHS8 -upflow, horizontal left or right
  - ◇ GDS8- Dedicated downflow
- Heavy-duty aluminized-steel, dual-diameter tubular heat exchanger
- Single-stage gas valve
- Durable Hot-surface igniter
- Quiet, single-speed draft induced
- Self-diagnostic control board
- Color-coded low-voltage terminals
- Multi-speed blower motor
- GHS8: High-static airflow capability
- California Low NOx emissions standards models available
- Convenient left or right connection for gas and electrical service
- Heavy-gauge steel cabinet with durable baked-enamel finish
- Cabinet air leakage (Q<sub>Leak</sub>) ≤ 2%
- Foil-faced insulated heat exchanger



\* Complete warranty details available from your local dealer or at [www.goodmanmfg.com](http://www.goodmanmfg.com). To receive the Lifetime Heat Exchanger Limited Warranty (good for as long as you own your home) and 10-Year Parts Limited Warranty, online registration must be completed within 60 days of installation. Online registration is not required in California or Quebec.

# PACKAGED UNITS



## GPC14H AIR CONDITIONER — UP TO 14 SEER

MODEL	NOMINAL CAPACITIES		ELECTRIC HEAT (kW)	SEER / EER	VOLTAGE-PHASE	DIMENSIONS			DBS	SHIP WEIGHT (LBS)
	TONS	CFM				W"	D"	H"		
GPC1424H41C*/D*	2	875	14.0 / 12.0	5, 8, 10	208/230-1	66	33	30½	76	310
GPC1424H41E*	2	875	14.0 / 12.0	5, 8, 10	208/230-1	66	33	30½	76	305
GPC1430H41C*/D*	2½	1,050	14.0 / 12.0	5, 8, 10,15	208/230-1	66	33	30½	76	315
GPC1430H41E*	2½	1,050	14.0 / 12.0	5, 8, 10,15	208/230-1	66	33	30½	76	310
GPC1436H41C*/D*	3	1,200	14.0 / 12.0	5, 8, 10,15,20	208/230-1	66	33	30½	78	320
GPC1442H41C*/D*	3½	1,200	14.0 / 12.0	5, 8, 10,15, 20	208/230-1	66	33	30½	78	365
GPC1442H41E*	3½	1,300	14.0 / 12.0	5, 8, 10,15, 20	208/230-1	66	33	30½	78	355
GPC1448H41C*/D*	4	1,600	14.0 / 12.0	5, 8, 10,15, 20	208/230-1	66	33	38½	80	375
GPC1448H41E*	4	1,600	14.0 / 12.0	5, 8, 10,15, 20	208/230-1	66	33	35½	80	370
GPC1460H41C*/D*	5	1,600	14.2 / 12.0	5, 8, 10,15, 20	208/230-1	66	33	38½	80	380
GPC1460H41E*	5	1,600	14.0 / 11.5	5, 8, 10,15, 20	208/230-1	66	33	35½	80	375

Goodman Manufacturing Company, L.P., reserves the right to discontinue, or change at any time, specifications or designs without notice or without incurring obligations.

### Product Features



- High-efficiency compressor with internal relief valve
- All-Aluminum evaporator coil
- Fully charged R-410A refrigerant system
- EEM blower motor
- Quiet horizontal discharge
- Copper tube/aluminum fin coil
- Totally enclosed, permanently lubricated condenser fan motor
- Electric heat kits available as field-installed options
- Heavy-gauge galvanized-steel cabinet with baked-on powder-paint finish
- Fully insulated blower compartment with convenient access panels
- Louvered condenser coil protection



\* Complete warranty details available from you local dealer or at [www.goodmanmfg.com](http://www.goodmanmfg.com). To receive the 10-Year Parts Limited Warranty, online registration must be completed within 60 days of installation. Online registration is not required in California or Quebec.



## GPC13M AIR CONDITIONER — 13 SEER

MODEL	NOMINAL CAPACITIES		ELECTRIC HEAT (kW)	SEER / EER	VOLTAGE-PHASE	DIMENSIONS			DBs	SHIP WEIGHT (LBS)
	TONS	CFM				W"	D"	H"		
GPC1336M41**	3	1,080	5, 7, 10,15	13 / 11	208/230-1	47	51	34%	80.1	365
GPC1348M41**	4	1,675	5, 7, 10,15, 19	13 / 11	208/230-1	47	51	42%	81.7	435
GPC1360M41**	5	1,750	5, 7, 10,15, 19	13 / 10.9	208/230-1	47	51	42%	80.2	458

Goodman Manufacturing Company, L.P., reserves the right to discontinue, or change at any time, specifications or designs without notice or without incurring obligations.

### Product Features

- Energy-efficient compressor with internal relief valve
- All-Aluminum evaporator coil
- EEM blower motor; PSC blower motor on 3-ton units
- Fully charged R-410A refrigerant system
- Convertible airflow: horizontal or downflow
- Copper tube/aluminum fin coils
- Louvered condenser coil protection
- Totally enclosed, permanently lubricated condenser fan motor
- Electric heat kits available as field-installed options
- Heavy-gauge galvanized-steel cabinet with attractive Architectural Gray powder-paint finish
- When properly anchored, meets the 2010 Florida Building Code unit integrity requirements for hurricane-type winds (Anchor bracket kits available.)



\* Complete warranty details available from you local dealer or at [www.goodmanmfg.com](http://www.goodmanmfg.com). To receive the 10-Year Parts Limited Warranty, online registration must be completed within 60 days of installation. Online registration is not required in California or Quebec.

## GPC13H AIR CONDITIONER — 13 SEER

MODEL	NOMINAL CAPACITIES		ELECTRIC HEAT (kW)	SEER / EER	VOLTAGE-PHASE	DIMENSIONS			DBS	SHIP WEIGHT (LBS)
	TONS	CFM				W"	D"	H"		
GPC1324H41**	2	875	5, 7, 10	13.0 / 11.0	208/230-1	66½	34	30	76	305
GPC1330H41**	2½	1,050	5, 7, 10,15	13.0 / 11.0	208/230-1	66½	34	30	76	305
GPC1336H41**	3	1,200	5, 7, 10,15	13.0 / 11.0	208/230-1	66½	34	30	78	320
GPC1342H41**	3½	1,400	5, 7, 10,15, 19	13.0 / 11.0	208/230-1	66½	34	35	78	375
GPC1349H41**	4	1,600	5, 7, 10,15, 19	13.0 / 11.0	208/230-1	66½	34	38¾	80	375
GPC1360H41**	5	1,900	5, 7, 10,15, 19	13.0 / 11.0	208/230-1	66½	34	38¾	80	375

*Goodman Manufacturing Company, L.P., reserves the right to discontinue, or change at any time, specifications or designs without notice or without incurring obligations.*



### Product Features

- Energy-efficient compressor with internal relief valve
- All-Aluminum evaporator coil
- PSC blower motor; EEM blower motor on 5-ton units
- Fully charged R-410A refrigerant system
- Copper tube/aluminum fin coil
- Totally enclosed, permanently lubricated condenser fan motor
- Quiet horizontal discharge
- Electric heat kits available as field-installed options
- Heavy-gauge galvanized-steel cabinet with attractive Architectural Gray powder-paint finish
- Fully insulated blower compartment with convenient access panels
- Louvered condenser coil protection



\* Complete warranty details available from you local dealer or at [www.goodmanmfg.com](http://www.goodmanmfg.com). To receive the 10-Year Parts Limited Warranty, online registration must be completed within 60 days of installation. Online registration is not required in California or Quebec.

## GPH15M HEAT PUMP — UP TO 15 SEER/UP TO 8.0 HSPF

MODEL	NOMINAL CAPACITIES			ELECTRIC HEAT (kW)	SEER / EER	VOLTAGE-PHASE	DIMENSIONS			DBS	SHIP WEIGHT (LBS)
	COOLING <sup>1</sup>	HEATING <sup>2</sup>	CFM				W"	D"	H"		
GPH1524M41**	2	23,400	860	5,7,10	15.0/ 12.0	208/230-1	47	51	34%	76	366
GPH1530M41**	2½	27,400	1,000	5,7,10,15	14.5/ 11.5	208/230-1	47	51	34%	76	375
GPH1536M41**	3	35,400	1,200	5,7,10,15	14.5/ 12	208/230-1	47	51	34%	76	428
GPH1543M41**	3½	39,000	1,300	5,7,10,15	15.0/ 12.0	208/230-1	47	51	42%	78	472
GPH1549M41**	4	45,500	1,600	5,7,10,15,19	15.0/ 11.7	208/230-1	47	51	42%	78	470
GPH1560M41**	5	56,000	1,950	5,7,10,15,19	14.0/ 10.2	208/230-1	47	51	42%	78	483

<sup>1</sup> Tons    <sup>2</sup> BTU/h

Goodman Manufacturing Company, L.P., reserves the right to discontinue or change at any time specifications or designs without notice or without incurring obligations.

### Product Features

- High-efficiency compressor with internal relief valve
- All-Aluminum evaporator coil
- Fully-charged R-410A refrigerant system
- EEM blower motor
- Liquid-line filter drier
- Two-stage heating & cooling on 4- & 5-ton units
- Convertible airflow: horizontal or downflow
- Copper tube/aluminum fin coils
- Totally enclosed, permanently lubricated condenser fan motor
- Electric heat kits available as field-installed options
- Heavy-gauge galvanized-steel cabinet with attractive Architectural Gray powder-paint finish
- Louvered condenser coil protection
- When properly anchored, meets the 2010 Florida Building Code unit integrity requirements for hurricane-type winds (Anchor bracket kits available.)



\* Complete warranty details available from your local dealer or at [www.goodmanmfg.com](http://www.goodmanmfg.com). To receive the 10-Year Parts Limited Warranty, online registration must be completed within 60 days of installation. Online registration is not required in California or Quebec.

## GPH14H HEAT PUMP — UP TO 14.5 SEER/UP TO 8.0 HSPF

MODEL	NOMINAL CAPACITIES			ELECTRIC HEAT (kW)	SEER / EER	VOLTAGE-PHASE	DIMENSIONS			DBS	SHIP WEIGHT (LBS)
	COOLING <sup>1</sup>	HEATING <sup>2</sup>	CFM				W"	D"	H"		
GPH1424H41**	2	22,800	875	5, 8, 10	14.5 / 12.0	208/230-1	66	34	30	76	325
GPH1430H41**	2½	27,600	1,050	5, 8, 10,15	14.0 / 12.0	208/230-1	66	34	30	76	325
GPH1436H41**	3	32,200	1,200	5, 8, 10,15	14.0 / 11.5	208/230-1	66	34	35	78	385
GPH1442H41**	3½	37,600	1,300	5, 8, 10,15, 20	14.0 / 12.0	208/230-1	66	34	35	78	385
GPH1448H41**	4	44,000	1,600	5, 8, 10,15, 20	14.0 / 12.0	208/230-1	66	34	38¾	80	415
GPH1460H41**	5	54,500	1,700	5, 8, 10,15, 20	14.0 / 12.0	208/230-1	66	34	38¾	80	415

<sup>1</sup> Tons    <sup>2</sup> BTU/h

Goodman Manufacturing Company, L.P., reserves the right to discontinue or change at any time specifications or designs without notice or without incurring obligations.

### Product Features



- High-efficiency compressor with internal relief valve
- All-Aluminum evaporator coil
- EEM blower motor
- Fully charged R-410A refrigerant system
- Quiet horizontal discharge
- Copper tube/aluminum fin coil
- Totally enclosed, permanently lubricated condenser fan motor
- Electric heat kits available as field-installed options
- Heavy-gauge galvanized-steel cabinet with baked-on powder-paint finish



\* Complete warranty details available from you local dealer or at [www.goodmanmfg.com](http://www.goodmanmfg.com). To receive the 10-Year Parts Limited Warranty, online registration must be completed within 60 days of installation. Online registration is not required in California or Quebec.

## GPH13M HEAT PUMP — 13 SEER/UP TO 8.0 HSPF

MODEL	NOMINAL CAPACITIES			ELECTRIC HEAT (kW)	SEER / EER	VOLTAGE-PHASE	DIMENSIONS			DBs	SHIP WEIGHT (LBS)
	COOLING <sup>1</sup>	HEATING <sup>2</sup>	CFM				W"	D"	H"		
GPH1324M41**	2	23,000	850	5,8,10	13 / 11	208/230-1	47	51	34%	76.7	365
GPH1330M41**	2½	27,000	1,050	5,8,10,15	13 / 11	208/230-1	47	51	34%	75.3	390
GPH1336M41**	3	34,600	1,200	5,8,10,15	13 / 11	208/230-1	47	51	34%	81.3	400
GPH1342M41**	3½	40,000	1,385	5,8,10,15	13 / 11	208/230-1	47	51	34%	80.1	440
GPH1348M41**	4	47,000	1,690	5,8,10,15,20	13 / 11	208/230-1	47	51	42%	79.1	485
GPH1360M41**	5	55,500	1,775	5,8,10,15,20	13 / 10.9	208/230-1	47	51	42%	80.2	495

<sup>1</sup> Tons    <sup>2</sup> BTU/h

Goodman Manufacturing Company, L.P., reserves the right to discontinue or change at any time specifications or designs without notice or without incurring obligations.

### Product Features

- Energy-efficient compressor with internal relief valve
- PSC blower motor; EEM blower motor on 3-, 4- & 5-ton units
- All-Aluminum evaporator coil
- Convertible airflow: horizontal or downflow
- Totally enclosed, permanently lubricated condenser fan motor
- Copper tube/aluminum fin coils
- Electric heat kits available as field-installed options
- Heavy-gauge galvanized-steel cabinet with attractive Architectural Gray powder-paint finish
- When properly anchored, meets the 2010 Florida Building Code unit integrity requirements for hurricane-type winds (Anchor bracket kits available.)



\* Complete warranty details available from your local dealer or at [www.goodmanmfg.com](http://www.goodmanmfg.com). To receive the 10-Year Parts Limited Warranty, online registration must be completed within 60 days of installation. Online registration is not required in California or Quebec.

# GPH13H HEAT PUMP — 13 SEER/UP TO 7.7 HSPF

MODEL	NOMINAL CAPACITIES			ELECTRIC HEAT (kW)	SEER / EER	VOLTAGE-PHASE	DIMENSIONS			DBS	SHIP WEIGHT (LBS)
	COOLING <sup>1</sup>	HEATING <sup>2</sup>	CFM				W"	D"	H"		
GPH1324H41**	2	22,000	850	5, 7, 10	13.0 / 11.0	208/230-1	66½	34	30	76	325
GPH1330H41**	2½	27,400	1,050	5, 7, 10,15	13.0 / 11.0	208/230-1	66½	34	30	76	325
GPH1336H41**	3	33,600	1,200	5, 7, 10,15	13.0 / 11.0	208/230-1	66½	34	35	78	385
GPH1342H41**	3½	38,000	1,400	5, 7, 10,15, 19	13.0 / 11.0	208/230-1	66½	34	35	78	385
GPH1348H41**	4	44,500	1,600	5, 7, 10,15, 19	13.0 / 11.0	208/230-1	66½	34	38¾	80	415
GPH1360H41**	5	54,500	1,850	5, 7, 10,15, 19	13.0 / 11.0	208/230-1	66½	34	38¾	80	415

<sup>1</sup> Tons    <sup>2</sup> BTU/h

Goodman Manufacturing Company, L.P., reserves the right to discontinue or change at any time specifications or designs without notice or without incurring obligations.

## Product Features



- Energy-efficient compressor with internal relief valve
- PSC blower motor; EEM blower motor on 5-ton units
- All-Aluminum evaporator coil
- Fully charged R-410A refrigerant system
- Quiet horizontal discharge
- Copper tube/aluminum fin coil
- Totally enclosed, permanently lubricated condenser fan motor
- Electric heat kits available as field-installed options
- Heavy-gauge galvanized-steel cabinet with baked-on powder-paint finish
- Fully insulated air handling compartment with convenient access panels
- Louvered condenser coil protection



\* Complete warranty details available from you local dealer or at [www.goodmanmfg.com](http://www.goodmanmfg.com). To receive the 10-Year Parts Limited Warranty, online registration must be completed within 60 days of installation. Online registration is not required in California or Quebec.

## GPG15 GAS/ELECTRIC UNIT — UP TO 15 SEER/80% AFUE

MODEL	NOMINAL RATINGS		SEER / EER	VOLTAGE-PHASE	DIMENSIONS			DBS	SHIP WEIGHT (LBS)
	COOLING <sup>1</sup>	HEATING <sup>2</sup>			W"	D"	H"		
GPG152407041**	2	69,000	14.5 / 12.0	208/230-1	47	51	34¾	76	445
GPG153009041**	2½	92,000	14.5 / 12.0	208/230-1	47	51	34¾	76	448
GPG153709041**	3	92,000	14.5 / 11.5	208/230-1	47	51	34¾	76	514
GPG154211541**	3½	115,000	15.0 / 12.0	208/230-1	47	51	34¾	78	517
GPG154911541**	5	115,000	14.5 / 11.5	208/230-1	47	51	34¾	78	519
GPG156014041**	5	138,000	14.2 / 10.1	208/230-1	47	51	34¾	78	523

<sup>1</sup> Tons    <sup>2</sup> BTU/h

Goodman Manufacturing Company, L.P., reserves the right to discontinue or change at any time specifications or designs without notice or without incurring obligations.

### Product Features

- High-efficiency compressor
- Two-stage compressor on 4-, and 5-ton models
- EEM (X-13) blower motor
- Durable, corrosion-resistant, aluminized-steel tubular heat exchanger
- All-Aluminum evaporator coil
- Copper tube /aluminum fin coil
- Redundant two-stage gas valve; natural gas with easy conversion to propane
- Direct spark ignition system includes a microprocessor-based control for the entire ignition sequence
- Power-assisted combustion
- All blower operation and all safety circuits complete with self-diagnostics
- Loss-of-charge protection
- Complies with California Low NOx emissions standards
- Fully insulated heavy-gauge, zinc-coated steel cabinet with UV-resistant powder-paint finish
- When properly anchored, meets the 2010 Florida Building Code unit integrity requirements for hurricane-type winds (Anchor bracket kits available.)



\* Complete warranty details available from you local dealer or at [www.goodmanmfg.com](http://www.goodmanmfg.com). To receive the 10-Year Parts Limited Warranty, online registration must be completed within 60 days of installation. Online registration is not required in California or Quebec.

## GPG13M GAS/ELECTRIC UNIT — 13 SEER/80% AFUE

MODEL	NOMINAL CAPACITIES			VOLTAGE-PHASE	DIMENSIONS			DBS	SHIP WEIGHT (LBS)
	COOLING <sup>1</sup>	HEATING <sup>2</sup>	CFM		W"	D"	H"		
GPG1324045M41D**	2	46,000	800	208/230-1	47	51	34%	78	415
GPG1324070M41D**	2	69,000	800	208/230-1	47	51	34%	78	425
GPG1330045M41B**	2½	46,000	1,000	208/230-1	47	51	34%	78	416
GPG1330070M41B**	2½	69,000	1,000	208/230-1	47	51	34%	78	421
GPG1336045M41B**	3	46,000	1,250	208/230-1	47	51	34%	78	481
GPG1336070M41B**	3	69,000	1,250	208/230-1	47	51	34%	78	486
GPG1336090M41B**	3	92,000	1,250	208/230-1	47	51	34%	78	491
GPG1342070M41B**	3½	69,000	1,300	208/230-1	47	51	42%	78	485
GPG1342070M41D**	3½	69,000	1,300	208/230-1	47	51	42%	78	515
GPG1342090M41B**	3½	92,000	1,300	208/230-1	47	51	42%	78	488
GPG1342090M41D**	3½	92,000	1,300	208/230-1	47	51	42%	78	520
GPG1348070M41D**	4	69,000	1,550	208/230-1	47	51	42%	80	487
GPG1348070M41E**	4	69,000	1,550	208/230-1	47	51	42%	80	540
GPG1348090M41D**	4	92,000	1,550	208/230-1	47	51	42%	80	492
GPG1348090M41E**	4	92,000	1,550	208/230-1	47	51	42%	80	545
GPG1348115M41D**	4	115,000	1,550	208/230-1	47	51	42%	80	497
GPG1348115M41E**	4	115,000	1,550	208/230-1	47	51	42%	80	550
GPG1360090M41D**	5	92,000	1,750	208/230-1	47	51	42%	80	495
GPG1360115M41D**	5	115,000	1,750	208/230-1	47	51	42%	80	500
GPG1360140M41D**	5	138,000	1,750	208/230-1	47	51	42%	80	505

<sup>1</sup> Tons    <sup>2</sup> BTU/h

Goodman Manufacturing Company, L.P., reserves the right to discontinue or change at any time specifications or designs without notice or without incurring obligations.

### Product Features



- Energy-efficient compressor with internal relief valve
- Durable, corrosion-resistant aluminized-steel tubular heat exchanger
- PSC blower motor; EEM blower motor on 4- & 5-ton units
- All-Aluminum evaporator coil
- Fully charged R-410A refrigerant system
- Copper tube/aluminum fin coils
- Redundant gas valve for natural gas with easy conversion to propane
- All blower operation and all safety circuits complete with self-diagnostics
- Direct-spark ignition system includes a microprocessor-based control for the entire ignition sequence
- All models comply with California Low NOx emission standards
- Heavy-gauge, galvanized-steel cabinet with UV-resistant powder-paint finish
- When properly anchored, meets the 2010 Florida Building Code unit integrity requirements for hurricane-type winds (Anchor bracket kits available.)



\* Complete warranty details available from you local dealer or at [www.goodmanmfg.com](http://www.goodmanmfg.com). To receive the 10-Year Parts Limited Warranty, online registration must be completed within 60 days of installation. Online registration is not required in California or Quebec.



## GPD14 DUAL-FUEL UNIT — UP TO 14.5 SEER/80% AFUE/8.0 HSPF

MODEL	NOMINAL CAPACITIES			VOLTAGE / PHASE	DIMENSIONS			DBs	SHIP WEIGHT (LBS)
	COOLING <sup>1</sup>	HEATING <sup>2</sup>	GAS HEAT <sup>2</sup>		W"	D"	H"		
GPD1424070M41**	2	23,800	69,000	208-230/ 1	47	51	34¾	76	440
GPD1430090M41**	2½	28,000	92,000	208-230/ 1	47	51	34¾	76	440
GPD1436090M41**	3	32,600	92,000	208-230/ 1	47	51	34¾	76	460
GPD1437090M41**	3	34,000	92,000	208-230/ 1	47	51	34¾	76	440
GPD1442115M41**	3½	40,000	115,000	208-230/ 1	47	51	42¾	78	545
GPD1448115M41**	4	44,000	115,000	208-230/ 1	47	51	42¾	78	545

<sup>1</sup> Tons    <sup>2</sup> BTU/h

Goodman Manufacturing Company, L.P., reserves the right to discontinue or change at any time specifications or designs without notice or without incurring obligations.

### Product Features

- Combines cooling with heat pump and gas heating
- High-efficiency scroll compressor
- Durable, corrosion-resistant aluminized-steel tubular heat exchanger
- Energy-efficient motor (EEM)
- Copper tube / aluminum fin coil
- Two-stage gas valve; natural gas with easy conversion to propane
- Direct spark ignition system with microprocessor-based control
- All blower operation and all safety circuits complete with self-diagnostics
- Power-assisted combustion
- Loss-of-charge protection
- All models comply with California Low NOx emission standards
- AHRI Certified; ETL Listed
- Fully insulated heavy-gauge, zinc-coated steel cabinet with UV-resistant powder-paint finish
- Louvered metal panel condenser coil protection
- When properly anchored, meets 2010 Florida Building Code unit integrity requirements for hurricane-type winds (Anchor bracket kits available.)



\* Complete warranty details available from you local dealer or at [www.goodmanmfg.com](http://www.goodmanmfg.com). To receive the 10-Year Parts Limited Warranty, online registration must be completed within 60 days of installation. Online registration is not required in California or Quebec.



# AIR HANDLERS & COILS



## AVPTC — MULTI-POSITION, VARIABLE-SPEED AIR HANDLER WITH SMARTFRAME™ CABINET

MODEL	COOLING CAPACITY (BTU/H)	VOLTAGE	DIMENSIONS			SERVICE VALVE		SHIP WEIGHT (LBS)
			W"	D"	H"	LIQUID	SUCTION	
AVPTC24B14*	24,000	208/230	17½	21	45	¾"	¾"	100
AVPTC30C14*	30,000	208/230	21	21	49	¾"	¾"	118
AVPTC36C14*	36,000	208/230	21	21	49	¾"	¾"	118
AVPTC42D14*	42,000	208/230	24½	21	58	¾"	¾"	155
AVPTC48C14*	48,000	208/230	24½	21	49	¾"	¾"	125
AVPTC48D14*	48,000	208/230	24½	21	58	¾"	¾"	167
AVPTC60D14*	60,000	208/230	24½	21	58	¾"	¾"	167

Goodman Manufacturing Company, L.P., reserves the right to discontinue or change at any time specifications or designs without notice or without incurring obligations.

### Product Features



- Internal factory-installed thermal expansion valves for cooling and heat pump applications
- Check flowrator for cooling and heat pump applications
- Variable-speed ECM blower motor
- ComfortNet™ Communicating System compatible
- Auto configuration of the airflow and tonnage in communicating mode
- Provides constant CFM over a wide range of static pressure conditions independent of duct system
- CFM indicator
- Fault recall of six most recent faults
- Provides adjustable low CFM for efficient fan-only operation
- Improved humidity and comfort control
- Built-in compatibility with multi-stage heat pump and cooling applications
- All-aluminum evaporator coil
- Coil mounting track for quick repositioning
- Optimized for use with R-410A refrigerant
- Cabinet air leakage less than 2.0% at 1.0 inch H<sub>2</sub>O when tested in accordance with ASHRAE standard 193
- Cabinet air leakage less than 1.4% at 0.5 inch H<sub>2</sub>O when tested in accordance with ASHRAE standard 193
- 3 kW – 25 kW electric heater kits
- Horizontal or vertical configuration capabilities
- Rigid SmartFrame™ cabinet
- 21" depth for easier attic access
- DecaBDE-free thermoplastic drain pan with secondary drain connections
- Screw-less sides and back helps to reduce condensation when installed in humid locations
- Foil-faced insulation covers the internal casing to reduce cabinet condensation
- Galvanized, leather grain-embossed finish
- Glue-less cabinet insulation retention
- Tool-less filter access
- AHRI certified; ETL listed



\* Complete warranty details available from you local dealer or at [www.goodmanmfg.com](http://www.goodmanmfg.com). To receive the 10-Year Parts Limited Warranty, online registration must be completed within 60 days of installation. Online registration is not required in California or Quebec.

## ASPT — MULTI-POSITION, MULTI-SPEED AIR HANDLER WITH SMARTFRAME™ CABINET

MODEL	NOMINAL COOLING (TONS)	VOLTAGE	UNIT DIMENSIONS			CONNECTION SIZE		SHIP WEIGHT (LBS)
			W"	D"	H"	LIQUID	SUCTION	
ASPT24B14*	2	208/230	17½	21	45	¾"	¾"	100
ASPT30C14*	2½	208/230	21	21	49	¾"	¾"	118
ASPT36C14*	3	208/230	21	21	49	¾"	¾"	118
ASPT42D14*	3½	208/230	24½	21	58	¾"	¾"	167
ASPT48D14*	4	208/230	24½	21	58	¾"	¾"	167
ASPT60D14*	5	208/230	24½	21	58	¾"	¾"	167

Goodman Manufacturing Company, L.P., reserves the right to discontinue, or change at any time, specifications or designs without notice or without incurring obligations.



### Product Features

- Internal factory-installed thermal expansion valves for cooling and heat pump applications
- Direct drive, multi-speed ECM blower motor
- All-aluminum evaporator coil
- Coil mounting track for quick repositioning
- Optimized for use with R-410A refrigerant
- Cabinet air leakage less than 2.0% at 1.0 inch H<sub>2</sub>O when tested in accordance with ASHRAE standard 193
- Cabinet air leakage less than 1.4% at 0.5 inch H<sub>2</sub>O when tested in accordance with ASHRAE standard 193
- 3 kW – 25 kW electric heater kits
- Horizontal or vertical configuration capabilities
- Rigid SmartFrame™ cabinet
- 21" depth for easier attic access
- DecaBDE-free thermoplastic drain pan with secondary drain connections
- Screw-less sides and back helps to reduce condensation when installed in humid locations
- Foil-faced insulation covers the internal casing to reduce cabinet condensation
- Galvanized, leather grain-embossed finish
- Glue-less cabinet insulation retention
- Tool-less filter access
- AHRI certified; ETL listed



\* Complete warranty details available from you local dealer or at [www.goodmanmfg.com](http://www.goodmanmfg.com). To receive the 10-Year Parts Limited Warranty, online registration must be completed within 60 days of installation. Online registration is not required in California or Quebec.

## ASUF — MULTI-POSITION, MULTI-SPEED AIR HANDLER WITH SMARTFRAME™ CABINET

MODEL	NOMINAL COOLING (TONS)	VOLTAGE	DIMENSIONS			SERVICE VALVE		SHIP WEIGHT (LBS)
			W"	D"	H"	LIQUID	SUCTION	
ASUF49C14*	4	208/230	21	21	49	3/8"	3/4"	125
ASUF59D14*	5	208/230	24½	21	58	3/8"	3/4"	167

Goodman Manufacturing Company, L.P., reserves the right to discontinue, or change at any time, specifications or designs without notice or without incurring obligations.

### Product Features



- Check flowrator for cooling and heat pump applications
- Direct drive, multi-speed ECM blower motor
- All-aluminum evaporator coil
- Coil mounting track for quick repositioning
- Optimized for use with R-410A refrigerant
- Cabinet air leakage less than 2.0% at 1.0 inch H<sub>2</sub>O when tested in accordance with ASHRAE standard 193
- Cabinet air leakage less than 1.4% at 0.5 inch H<sub>2</sub>O when tested in accordance with ASHRAE standard 193
- 3 kW – 25 kW electric heater kits
- Horizontal or vertical configuration capabilities
- Rigid SmartFrame™ cabinet
- 21" depth for easier attic access
- DecaBDE-free thermoplastic drain pan with secondary drain connections
- Screw-less sides and back helps to reduce condensation when installed in humid locations
- Foil-faced insulation covers the internal casing to reduce cabinet condensation
- Galvanized, leather grain-embossed finish
- Glue-less cabinet insulation retention
- Tool-less filter access
- AHRI certified; ETL listed



\* Complete warranty details available from you local dealer or at [www.goodmanmfg.com](http://www.goodmanmfg.com). To receive the 10-Year Parts Limited Warranty, online registration must be completed within 60 days of installation. Online registration is not required in California or Quebec.

**ARPT — MULTI-POSITION, MULTI-SPEED AIR HANDLER WITH SMARTFRAME™ CABINET**

MODEL	NOMINAL COOLING (TONS)	VOLTAGE	DIMENSIONS			SERVICE VALVE		SHIP WEIGHT (LBS)
			W"	D"	H"	LIQUID	SUCTION	
ARPT24B14*	2	208/230	17½	21	45	¾"	¾"	99
ARPT30B14*	2½	208/230	17½	21	45	¾"	¾"	110
ARPT36C14*	3	208/230	21	21	49	¾"	¾"	130
ARPT36D14*	3	208/230	24½	21	58	¾"	¾"	130
ARPT42D14*	3½	208/230	24½	21	58	¾"	¾"	147
ARPT48D14*	4	208/230	24½	21	58	¾"	¾"	157
ARPT60D14*	5	208/230	24½	21	58	¾"	¾"	159

*Goodman Manufacturing Company, L.P., reserves the right to discontinue, or change at any time, specifications or designs without notice or without incurring obligations.*

**Product Features**



- Internal factory-installed thermal expansion valves for cooling and heat pump applications
- Direct drive, multi-speed PSC blower motor
- All-aluminum evaporator coil
- Coil mounting track for quick repositioning
- Optimized for use with R-410A refrigerant
- Cabinet air leakage less than 2.0% at 1.0 inch H<sub>2</sub>O when tested in accordance with ASHRAE standard 193
- Cabinet air leakage less than 1.4% at 0.5 inch H<sub>2</sub>O when tested in accordance with ASHRAE standard 193
- 3 kW – 25 kW electric heater kits
- Horizontal or vertical configuration capabilities
- Rigid SmartFrame™ cabinet
- 21" depth for easier attic access
- DecaBDE-free thermoplastic drain pan with secondary drain connections
- Screw-less sides and back helps to reduce condensation when installed in humid locations
- Foil-faced insulation covers the internal casing to reduce cabinet condensation
- Galvanized, leather grain-embossed finish
- Glue-less cabinet insulation retention
- Tool-less filter access
- AHRI certified; ETL listed



\* Complete warranty details available from you local dealer or at [www.goodmanmfg.com](http://www.goodmanmfg.com). To receive the 10-Year Parts Limited Warranty, online registration must be completed within 60 days of installation. Online registration is not required in California or Quebec.

## ARUF — MULTI-POSITION, MULTI-SPEED AIR HANDLER WITH SMARTFRAME™ CABINET

MODEL	NOMINAL COOLING (TONS)	VOLTAGE	UNIT DIMENSIONS			CONNECTION SIZE		SHIP WEIGHT (LBS)
			W"	D"	H"	LIQUID	SUCTION	
ARUF18B14*	1½	208/230	17½	21	45	¾"	¾"	96
ARUF24B14*	2	208/230	17½	21	45	¾"	¾"	96
ARUF30B14*	2½	208/230	17½	21	45	¾"	¾"	102
ARUF36C14*	3	208/230	21	21	49	¾"	¾"	116
ARUF42C14*	3½	208/230	21	21	49	¾"	¾"	118
ARUF48D14*	4	208/230	24½	21	58	¾"	¾"	147
ARUF60D14*	5	208/230	24.5	21	58	¾"	¾"	151

Goodman Manufacturing Company, L.P., reserves the right to discontinue, or change at any time, specifications or designs without notice or without incurring obligations.

### Product Features



- Check flowrator for cooling and heat pump applications
- Direct drive, multi-speed PSC blower motor
- All-aluminum evaporator coil
- Coil mounting track for quick repositioning
- Optimized for use with R-410A refrigerant
- Cabinet air leakage less than 2.0% at 1.0 inch H<sub>2</sub>O when tested in accordance with ASHRAE standard 193
- Cabinet air leakage less than 1.4% at 0.5 inch H<sub>2</sub>O when tested in accordance with ASHRAE standard 193
- 3 kW – 25 kW electric heater kits
- Horizontal or vertical configuration capabilities
- Rigid SmartFrame™ cabinet
- 21" depth for easier attic access
- DecaBDE-free thermoplastic drain pan with secondary drain connections
- Screw-less sides and back helps to reduce condensation when installed in humid locations
- Foil-faced insulation covers the internal casing to reduce cabinet condensation
- Galvanized, leather grain-embossed finish
- Glue-less cabinet insulation retention
- Tool-less filter access
- AHRI certified; ETL listed



\* Complete warranty details available from you local dealer or at [www.goodmanmfg.com](http://www.goodmanmfg.com). To receive the 10-Year Parts Limited Warranty, online registration must be completed within 60 days of installation. Online registration is not required in California or Quebec.



## MBVC/MBR — MODULAR BLOWERS

MODEL	VOLTAGE-PHASE	DIMENSIONS			SHIP WEIGHT (LBS)
		W"	D"	H"	
MBVC1200AA-1	208/230-1	17½	21	26	67
MBVC1600AA-1	208/230-1	21	21	30	80
MBVC2000AA-1	208/230-1	24½	21	30	86

Goodman Manufacturing Company, L.P., reserves the right to discontinue, or change at any time, specifications or designs without notice or without incurring obligations.

MODEL	VOLTAGE-PHASE	DIMENSIONS			SHIP WEIGHT (LBS)
		W"	D"	H"	
MBR0800AA-1	208/230-1	17½	21	26	62
MBR1200AA-1	208/230-1	17½	21	26	62
MBR1600AA-1	208/230-1	21	21	30	73
MBR2000AA-1	208/230-1	24½	21	30	84

Goodman Manufacturing Company, L.P., reserves the right to discontinue, or change at any time, specifications or designs without notice or without incurring obligations.

### Product Features: MBVC

- Variable-speed ECM blower motor
- ComfortNet™ Communicating System compatible
- Auto configuration of the airflow and tonnage in communicating mode
- Provides constant CFM over a wide range of static pressure conditions independent of duct system
- CFM indicator
- Fault recall of six most recent faults
- Provides adjustable low CFM for efficient fan-only operation
- Improved humidity and comfort control
- Built-in compatibility with multi-stage heat pump and cooling applications
- 3 kW – 21 kW electric heat kits
- Blower section usable as electric heater
- Horizontal or vertical configuration capabilities
- 21" depth for easier attic access
- Foil-faced insulation covers the internal casing to reduce cabinet condensation
- Galvanized, leather grain-embossed finish
- AHRI certified; ETL listed

### Product Features: MBR

- Direct drive, multi-speed PSC blower motor
- 3 kW – 21 kW electric heat kits
- Blower section usable as electric heater
- Horizontal or vertical configuration capabilities
- 21" depth for easier attic access
- Foil-faced insulation covers the internal casing to reduce cabinet condensation
- Galvanized, leather grain-embossed finish
- AHRI certified; ETL listed



\* Complete warranty details available from you local dealer or at [www.goodmanmfg.com](http://www.goodmanmfg.com). To receive the 10-Year Parts Limited Warranty, online registration must be completed within 60 days of installation. Online registration is not required in California or Quebec.

## AWUF — WALL MOUNT

MODEL	NOMINAL COOLING (TONS)	ELECTRIC HEAT (kW)	VOLTAGE	DIMENSIONS			SERVICE VALVE		SHIP WEIGHT (LBS)
				W"	D"	H"	LIQUID	SUCTION	
AWUF180316*	1½	3	240/208	20 <sup>3</sup> / <sub>16</sub> *	16* <sup>1</sup> / <sub>8</sub>	36*	<sup>3</sup> / <sub>8</sub> "	<sup>3</sup> / <sub>8</sub> "	84
AWUF180516*	1½	5	240/208	20 <sup>3</sup> / <sub>16</sub> *	16* <sup>1</sup> / <sub>8</sub>	36*	<sup>3</sup> / <sub>8</sub> "	<sup>3</sup> / <sub>8</sub> "	84
AWUF180816*	1½	8	240/208	20 <sup>3</sup> / <sub>16</sub> *	16* <sup>1</sup> / <sub>8</sub>	36*	<sup>3</sup> / <sub>8</sub> "	<sup>3</sup> / <sub>8</sub> "	84
AWUF240316*	2	5	240/208	20 <sup>3</sup> / <sub>16</sub> *	16* <sup>1</sup> / <sub>8</sub>	36*	<sup>3</sup> / <sub>8</sub> "	<sup>3</sup> / <sub>8</sub> "	84
AWUF240516*	2	5	240/208	20 <sup>3</sup> / <sub>16</sub> *	16* <sup>1</sup> / <sub>8</sub>	36*	<sup>3</sup> / <sub>8</sub> "	<sup>3</sup> / <sub>8</sub> "	84
AWUF240816*	2	8	240/208	20 <sup>3</sup> / <sub>16</sub> *	16* <sup>1</sup> / <sub>8</sub>	36*	<sup>3</sup> / <sub>8</sub> "	<sup>3</sup> / <sub>8</sub> "	84
AWUF241016*	2	10	240/208	20 <sup>3</sup> / <sub>16</sub> *	16* <sup>1</sup> / <sub>8</sub>	36*	<sup>3</sup> / <sub>8</sub> "	<sup>3</sup> / <sub>8</sub> "	84
AWUF300316*	2½	3	240/208	24	21	36*	<sup>3</sup> / <sub>8</sub> "	<sup>3</sup> / <sub>4</sub> "	93
AWUF300516*	2½	5	240/208	24	21	36*	<sup>3</sup> / <sub>8</sub> "	<sup>3</sup> / <sub>4</sub> "	109
AWUF300816*	2½	8	240/208	24	21	36*	<sup>3</sup> / <sub>8</sub> "	<sup>3</sup> / <sub>4</sub> "	109
AWUF301016*	2½	10	240/208	24	21	36*	<sup>3</sup> / <sub>8</sub> "	<sup>3</sup> / <sub>4</sub> "	109
AWUF310516*	1½ to 2½	5	240/208	24	21	36*	<sup>3</sup> / <sub>8</sub> "	<sup>3</sup> / <sub>4</sub> "	109
AWUF310816*	1½ to 2½	8	240/208	24	21	36*	<sup>3</sup> / <sub>8</sub> "	<sup>3</sup> / <sub>4</sub> "	109
AWUF321016*	1½ to 2½	10	240/208	24	21	36*	<sup>3</sup> / <sub>8</sub> "	<sup>3</sup> / <sub>4</sub> "	109
AWUF360516*	2½ to 3	5	240/208	24	21	36*	<sup>3</sup> / <sub>8</sub> "	<sup>3</sup> / <sub>4</sub> "	96*
AWUF360816*	2½ to 3	8	240/208	24	21	36*	<sup>3</sup> / <sub>8</sub> "	<sup>3</sup> / <sub>4</sub> "	96*
AWUF361016*	2½ to 3	10	240/208	24	21	36*	<sup>3</sup> / <sub>8</sub> "	<sup>3</sup> / <sub>4</sub> "	96*
AWUF370516*	2½ to 3	5	240/208	24	21	36*	<sup>3</sup> / <sub>8</sub> "	<sup>3</sup> / <sub>4</sub> "	96*
AWUF370816*	2½ to 3	8	240/208	24	21	36*	<sup>3</sup> / <sub>8</sub> "	<sup>3</sup> / <sub>4</sub> "	96*
AWUF371016*	2½ to 3	10	240/208	24	21	36*	<sup>3</sup> / <sub>8</sub> "	<sup>3</sup> / <sub>4</sub> "	96*

Goodman Manufacturing Company, L.P., reserves the right to discontinue or change at any time specifications or designs without notice or without incurring obligations.



### Product Features

- Check flowrate for cooling and heat pump applications
- Direct-drive, multi-speed motor
- Sequence-controlled, rust-resistant nickel
- Rifled aluminum tubing and corrugated aluminum fins
- AHRI Certified; ETL Listed
- Built-in filter rack (filter included)
- Thermoplastic drain pan with bottom primary/secondary drain connection
- Factory-installed pull-type disconnect
- Large chassis (2½- and 3-ton units) – front return only; small chassis (1½- and 2-ton units) – front or bottom return
- Wall-hanging bracket provided

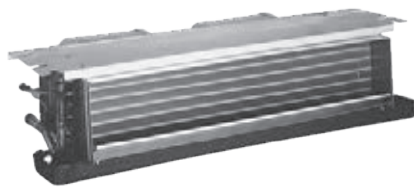


\* Complete warranty details available from you local dealer or at [www.goodmanmfg.com](http://www.goodmanmfg.com). To receive the 10-Year Parts Limited Warranty, online registration must be completed within 60 days of installation. Online registration is not required in California or Quebec.

ACNF — CEILING MOUNT

MODEL	COOLING CAPACITY (TONS)	ELECTRIC HEAT (kW)	VOLTAGE (VAC)	DIMENSIONS			REFRIGERANT LINE CONNECTION SIZE		SHIP WEIGHT (LBS)
				W"	D"	H"	LIQUID	SUCTION	
ACNF180016*	1½	0	208/230	37¼	21	10	¾"	¾"	59
ACNF180516*	1½	5	208/230	37¼	21	10	¾"	¾"	59
ACNF180616*	1½	6	208/230	37¼	21	10	¾"	¾"	59
ACNF180816*	1½	8	208/230	37¼	21	10	¾"	¾"	59
ACNF240016*	2	0	208/230	43¼	21	10	¾"	¾"	69
ACNF240516*	2	5	208/230	43¼	21	10	¾"	¾"	69
ACNF240616*	2	6	208/230	43¼	21	10	¾"	¾"	69
ACNF240816*	2	8	208/230	43¼	21	10	¾"	¾"	69
ACNF241016*	2	10	208/230	43¼	21	10	¾"	¾"	69
ACNF300016*	2½	0	208/230	49¼	21	10	¾"	¾"	79
ACNF300516*	2½	5	208/230	49¼	21	10	¾"	¾"	79
ACNF300616*	2½	6	208/230	49¼	21	10	¾"	¾"	79
ACNF300816*	2½	8	208/230	49¼	21	10	¾"	¾"	79
ACNF301016*	2½	10	208/230	49¼	21	10	¾"	¾"	79

Goodman Manufacturing Company, L.P., reserves the right to discontinue, or change at any time, specifications or designs without notice or without incurring obligations.



**Product Features**

- Check flowrate for cooling and heat pump applications
- Direct-drive, resilient-mount, multi-speed motor
- Sequence-controlled and rust-resistant nickel chromium heating elements of 5, 6, 8 and 10 kw
- High-efficiency evaporator coil
- Quiet operation
- Available with and without heat
- AHRI Certified; ETL Listed
- Primary/secondary drain connection in a high-temperature plastic drain pan
- Factory-installed pull-type disconnect
- Easy service access



\* Complete warranty details available from you local dealer or at [www.goodmanmfg.com](http://www.goodmanmfg.com). To receive the 10-Year Parts Limited Warranty, online registration must be completed within 60 days of installation. Online registration is not required in California or Quebec.

**CAPT — CASED COIL WITH TXV OPTION**

MODEL	CABINET DIMENSIONS			PLENUM OPENING		NOMINAL TONS	CONNECTION		SHIP WEIGHT (LBS)
	W	D	H	W	D		LIQUID	SUCTION	
CAPT3131B4*	17½"	21"	22"	16½"	19"	2½	¾"	¾"	4*6
CAPT3131C4*	21"	21"	22"	20"	19"	2½	¾"	¾"	50
CAPT3743C4*	21"	21"	30"	20"	19"	3-3½	¾"	7/8"	63
CAPT3743D4*	24*½"	21"	30"	23½"	19"	3-3½	¾"	7/8"	75
CAPT4961C4*	21"	21"	30"	20"	19"	4*-5	¾"	7/8"	73
CAPT4961D4*	24*½"	21"	30"	23½"	19"	4*-5	¾"	7/8"	76

*Goodman Company, L.P., reserves the right to discontinue, or change at any time, specifications or designs without notice or without incurring obligations.*

**Product Features**



- Internal factory-installed thermal expansion valves for cooling and heat pump applications
- Check flowrator for cooling and heat pump applications
- Upflow/Downflow configuration
- 21" depth for easier attic access
- Split seam front for easy access
- Foil-faced insulation covers the internal casing to reduce cabinet condensation
- Galvanized, leather grain-embossed finish
- All-aluminum evaporator coil
- Rust resistant, thermoplastic drain pans featuring a low water-retention design
- DecaBDE-free thermoplastic drain pan with secondary drain connections
- UV-resistant drain pan
- AHRI certified; ETL listed



\* Complete warranty details available from you local dealer or at [www.goodmanmfg.com](http://www.goodmanmfg.com). To receive the 10-Year Parts Limited Warranty, online registration must be completed within 60 days of installation. Online registration is not required in California or Quebec.

## CAPF — PAINTED CASED UPFLOW/DOWNFLOW

MODEL	DIMENSIONS			PLENUM OPENING		NOMINAL TONS	CONNECTION		SHIP WEIGHT (LBS)
	W	D	H	W	D		LIQUID	SUCTION	
CAPF1824A6*	14"	21"	18"	13"	19"	1½-2	¾"	¾"	32
CAPF1824B6*	17½"	21"	18"	16½"	19"	1½-2	¾"	¾"	35
CAPF1824C6*	21"	21"	22"	20"	19"	1½-2	¾"	¾"	42
CAPF3030A6*	14"	21"	22"	13"	19"	2½	¾"	¾"	41
CAPF3030B6*	17½"	21"	22"	16½"	19"	2½	¾"	¾"	43
CAPF3030C6*	21"	21"	22"	20"	19"	2½	¾"	¾"	44
CAPF3030D6*	24½"	21"	22"	23½"	19"	2½	¾"	¾"	52
CAPF3131B6*	17½"	21"	22"	16½"	19"	2½	¾"	¾"	46
CAPF3131C6*	21"	21"	26"	20"	19"	2½	¾"	7⁄8"	50
CAPF3636A6*	14"	21"	22"	13"	19"	3	¾"	7⁄8"	40
CAPF3636B6*	17½"	21"	22"	16½"	19"	3	¾"	7⁄8"	44
CAPF3636C6*	21"	21"	22"	20"	19"	3	¾"	7⁄8"	53
CAPF3636D6*	24½"	21"	22"	23½"	19"	3	¾"	7⁄8"	51
CAPF3642C6*	21"	21"	22"	20"	19"	3-3½	¾"	7⁄8"	49
CAPF3642D6*	24½"	21"	22"	23½"	19"	3-3½	¾"	7⁄8"	52
CAPF3743C6*	21"	21"	30"	20"	19"	3-3½	¾"	7⁄8"	63
CAPF3743D6*	24½"	21"	30"	23½"	19"	3-3½	¾"	7⁄8"	75
CAPF4860C6*	21"	21"	30"	20"	19"	4-5	¾"	7⁄8"	65
CAPF4860D6*	24½"	21"	30"	23½"	19"	4-5	¾"	7⁄8"	68
CAPF4961C6*	21"	21"	30"	20"	19"	4-5	¾"	7⁄8"	73
CAPF4961D6*	24½"	21"	30"	23½"	19"	4-5	¾"	7⁄8"	76

Goodman Manufacturing Company, L.P., reserves the right to discontinue, or change at any time, specifications or designs without notice or without incurring obligations.

### Product Features

- Check flowrator for cooling and heat pump applications
- Upflow/downflow configuration
- 21" depth for easier attic access
- Split seam front for easy access
- Foil-faced insulation covers the internal casing to reduce cabinet condensation
- Galvanized, leather grain-embossed finish
- All-aluminum evaporator coil
- Rust resistant, thermoplastic drain pans featuring a low water-retention design
- DecaBDE-free thermoplastic drain pan with secondary drain connections
- UV-resistant drain pan
- AHRI certified; ETL listed

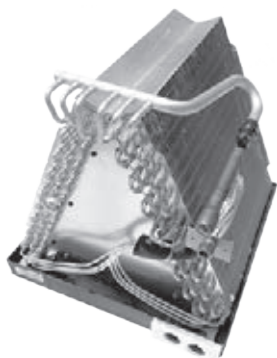


\* Complete warranty details available from you local dealer or at [www.goodmanmfg.com](http://www.goodmanmfg.com). To receive the 10-Year Parts Limited Warranty, online registration must be completed within 60 days of installation. Online registration is not required in California or Quebec.

## CAUF — UNCASD UPFLOW/DOWNFLOW

MODEL	DIMENSIONS			NOMINAL TONS	CONNECTION		SHIP WEIGHT (LBS)
	W	H	D		LIQUID	SUCTION	
CAUF1824A6*	13"	16 $\frac{1}{2}$ "	20 $\frac{3}{8}$ "	1 $\frac{1}{2}$ -2	$\frac{3}{8}$ "	$\frac{3}{4}$ "	18
CAUF1824B6*	16 $\frac{1}{2}$ "	16 $\frac{1}{2}$ "	20 $\frac{3}{8}$ "	1 $\frac{1}{2}$ -2	$\frac{3}{8}$ "	$\frac{3}{4}$ "	23
CAUF1824C6*	20"	16 $\frac{3}{8}$ "	20 $\frac{3}{8}$ "	1 $\frac{1}{2}$ -2	$\frac{3}{8}$ "	$\frac{3}{4}$ "	27
CAUF3030A6*	13"	20 $\frac{7}{16}$ "	20 $\frac{3}{8}$ "	2 $\frac{1}{2}$	$\frac{3}{8}$ "	$\frac{3}{4}$ "	25
CAUF3030B6*	16 $\frac{1}{2}$ "	18 $\frac{3}{4}$ "	20 $\frac{3}{8}$ "	2 $\frac{1}{2}$	$\frac{3}{8}$ "	$\frac{3}{4}$ "	22
CAUF3030C6*	20"	17 $\frac{7}{8}$ "	20 $\frac{3}{8}$ "	2 $\frac{1}{2}$	$\frac{3}{8}$ "	$\frac{3}{4}$ "	25
CAUF3030D6*	23"	17 $\frac{7}{8}$ "	20 $\frac{3}{8}$ "	2 $\frac{1}{2}$	$\frac{3}{8}$ "	$\frac{3}{4}$ "	32
CAUF3131B6*	16 $\frac{1}{2}$ "	20 $\frac{7}{16}$ "	20 $\frac{3}{8}$ "	2 $\frac{1}{2}$	$\frac{3}{8}$ "	$\frac{3}{4}$ "	27
CAUF3131C6*	20"	20"	20 $\frac{3}{8}$ "	2 $\frac{1}{2}$	$\frac{3}{8}$ "	$\frac{7}{8}$ "	31
CAUF3636A6*	13"	19 $\frac{1}{2}$ "	20 $\frac{3}{8}$ "	3	$\frac{3}{8}$ "	$\frac{7}{8}$ "	30
CAUF3636B6*	16 $\frac{1}{2}$ "	19 $\frac{3}{8}$ "	20 $\frac{3}{8}$ "	3	$\frac{3}{8}$ "	$\frac{7}{8}$ "	25
CAUF3636C6*	20"	19 $\frac{3}{8}$ "	20 $\frac{3}{8}$ "	3	$\frac{3}{8}$ "	$\frac{7}{8}$ "	28
CAUF3636D6*	23"	19 $\frac{3}{8}$ "	20 $\frac{3}{8}$ "	3	$\frac{3}{8}$ "	$\frac{7}{8}$ "	36
CAUF3642C6*	20"	19"	20 $\frac{3}{8}$ "	3-3 $\frac{1}{2}$	$\frac{3}{8}$ "	$\frac{7}{8}$ "	29
CAUF3642D6*	23"	19 $\frac{3}{8}$ "	20 $\frac{3}{8}$ "	3-3 $\frac{1}{2}$	$\frac{3}{8}$ "	$\frac{7}{8}$ "	34
CAUF3743C6*	20"	28 $\frac{7}{16}$ "	20 $\frac{3}{8}$ "	3-3 $\frac{1}{2}$	$\frac{3}{8}$ "	$\frac{7}{8}$ "	46
CAUF3743D6*	23"	27 $\frac{3}{8}$ "	20 $\frac{3}{8}$ "	3-3 $\frac{1}{2}$	$\frac{3}{8}$ "	$\frac{7}{8}$ "	43
CAUF4860C6*	20"	28"	20 $\frac{3}{8}$ "	4-5	$\frac{3}{8}$ "	$\frac{7}{8}$ "	48
CAUF4860D6*	23"	28"	20 $\frac{3}{8}$ "	4-5	$\frac{3}{8}$ "	$\frac{7}{8}$ "	39
CAUF4961C6*	20"	28"	20 $\frac{3}{8}$ "	4-5	$\frac{3}{8}$ "	$\frac{7}{8}$ "	54
CAUF4961D6*	23"	27"	20 $\frac{3}{8}$ "	4-5	$\frac{3}{8}$ "	$\frac{7}{8}$ "	59

Goodman Manufacturing Company, L.P., reserves the right to discontinue, or change at any time, specifications or designs without notice or without incurring obligations.



### Product Features

- Check flowrator for cooling and heat pump applications
- Upflow/Downflow configuration
- 21" depth for easier attic access
- Galvanized, leather grain-embossed finish
- All-aluminum evaporator coil
- Rust resistant, thermoplastic drain pans featuring a low water-retention design
- DecaBDE-free thermoplastic drain pan with secondary drain connections
- UV-resistant drain pan
- AHRI certified; ETL listed



\* Complete warranty details available from you local dealer or at [www.goodmanmfg.com](http://www.goodmanmfg.com). To receive the 10-Year Parts Limited Warranty, online registration must be completed within 60 days of installation. Online registration is not required in California or Quebec.

# CHPF — PAINTED CASED HORIZONTAL “A”

MODEL	CABINET DIMENSIONS			PLENUM OPENING		NOMINAL TONS	CONNECTION		SHIP WEIGHT (LBS)
	D	W	H	D	H		LIQUID	SUCTION	
CHPF1824A6*	21½"	26"	14"	19"	13"	1½ to 2	¾"	¾"	36
CHPF2430B6*	21½"	26"	17½"	19"	16½"	2 to 2½	¾"	¾"	55
CHPF3636B6*	21½"	26"	17½"	19"	16½"	3	¾"	7⁄8"	50
CHPF3642C6*	21½"	26"	21"	19"	20"	3 to 3½	¾"	7⁄8"	63
CHPF3642D6*	21½"	26"	24½"	19"	23½"	3 to 3½	¾"	7⁄8"	66
CHPF3743C6*	21½"	26"	21"	19"	20"	3 to 3½	¾"	7⁄8"	63
CHPF3743D6*	21½"	26"	24½"	19"	23½"	3 to 3½	¾"	7⁄8"	63
CHPF4860D6*	21½"	26"	24½"	19"	23½"	4 to 5	¾"	7⁄8"	77

*Goodman Manufacturing Company, L.P., reserves the right to discontinue, or change at any time, specifications or designs without notice or without incurring obligations.*

## Product Features

- Check flowrator for cooling and heat pump applications
- Horizontal configuration
- 21" depth for easier attic access
- Split seam front for easy access
- Foil-faced insulation covers the internal casing to reduce cabinet condensation
- Galvanized, leather grain-embossed finish
- All-aluminum evaporator coil
- Rust resistant, thermoplastic drain pans featuring a low water-retention design
- DecaBDE-free thermoplastic drain pan with secondary drain connections
- UV-resistant drain pan
- AHRI certified; ETL listed

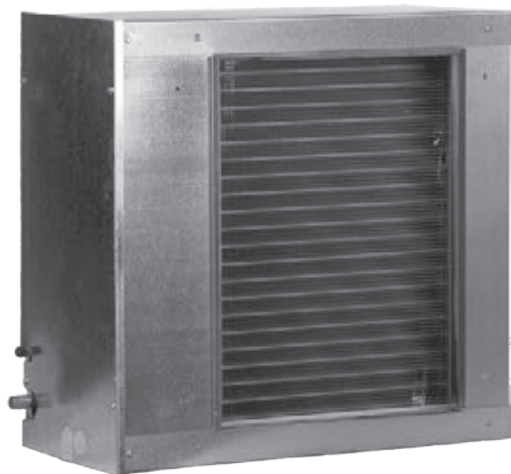


\* Complete warranty details available from you local dealer or at [www.goodmanmfg.com](http://www.goodmanmfg.com). To receive the 10-Year Parts Limited Warranty, online registration must be completed within 60 days of installation. Online registration is not required in California or Quebec.

## CSCF — HORIZONTAL SLAB EVAPORATOR INDOOR COIL

MODEL	CABINET DIMENSIONS			PLENUM OPENING		CAPACITY (TONS)	CONNECTION SIZE		SHIP WEIGHT (LBS)
	D	W	H	D	H		LIQUID	SUCTION	
CSCF1824N6*	25½"	12"	25"	16"	21"	1½-2	¾"	¾"	43
CSCF3036N6*	33½"	12"	25"	24"	21"	2½-3	¾"	¾"	53
CSCF3642N6*	39½"	12"	25"	30"	21"	3-3½	¾"	¾"	43
CSCF4860N6*	39½"	12"	25"	30"	21"	4-5	¾"	¾"	60

Goodman Manufacturing Company, L.P., reserves the right to discontinue or change at any time specifications or designs without notice or without incurring obligations.



### Product Features

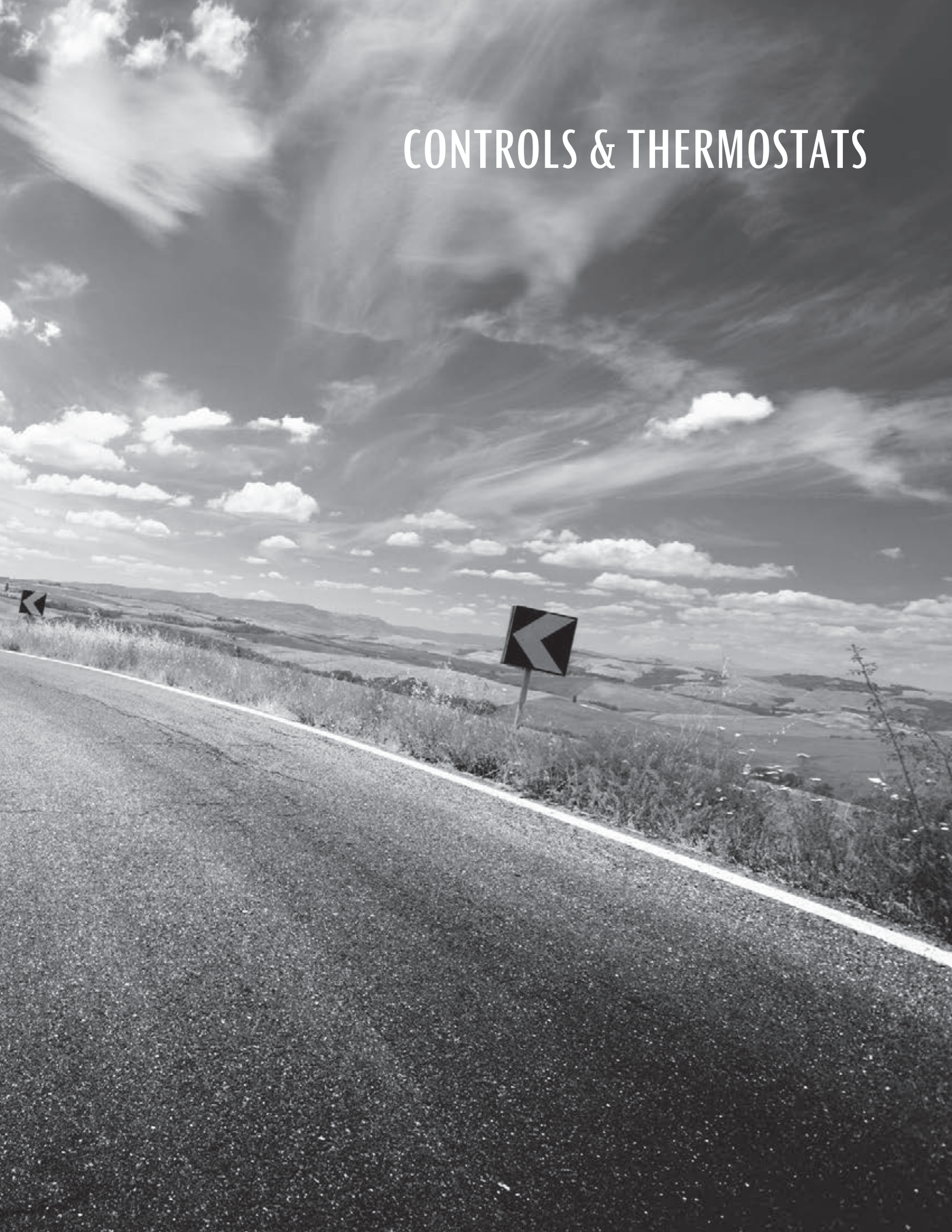
- Check flowrator for cooling and heat pump applications
- Foil-faced insulation covers the internal casing to reduce cabinet condensation
- Horizontal configuration
- All-aluminum evaporator coil
- Rust resistant, thermoplastic drain pans featuring a low water-retention design
- DecaBDE-free thermoplastic drain pan with secondary drain connections
- UV-resistant drain pan
- AHRI certified; ETL listed



\* Complete warranty details available from you local dealer or at [www.goodmanmfg.com](http://www.goodmanmfg.com). To receive the 10-Year Parts Limited Warranty, online registration must be completed within 60 days of installation. Online registration is not required in California or Quebec.



# CONTROLS & THERMOSTATS



## COMFORTNET<sup>®</sup> COMMUNICATING CONTROL & SYSTEM — CTK04

The ComfortNet™ brand CTK04 touchscreen digital control works with Goodman® brand ComfortNet-ready heating and cooling systems in both residential and commercial applications.

### Product Features

- Advanced modulation control
- Adjustable heat pump balance point
- Adjustable auxiliary heat lock-out
- Adjustable continuous four-speed fan
- Full color display
- Commercial / residential selection option
- On-board dehumidification capability
- Humidification control
- Humidifier type selection
- Wireless humidification option
- Window frost / condensation protection
- Southern dehumidification control
- Multiple commercial dehumidification options
- Indoor temperature averaging
- Device naming option
- Outdoor temperature display
- Outdoor humidity display (with RedLink outdoor sensor)
- Wireless accessory capability
- Multi-lingual (English, French, Spanish)
- Air filter maintenance reminder
- UV lamp maintenance reminder
- Humidifier pad maintenance reminder
- Electronic air cleaner maintenance reminder
- Continuous backlight
- Adjustable backlight & contrast
- Temperature display adjustment
- Humidity display adjustment
- Temperature display °F or °C
- Max heat & min. cool set-point temps
- Max / min temperature / humidity alerts
- User interaction log (historical)
- Advanced staging control
- Heat and cool cycle rate adjustable
- Energy management recovery
- Internet access
- Home-screen theme options
- Customizable home screen
- Keypad lock-out options
- Auto-display dimming option
- Dealer information capability
- USB upload dealer information & set-up



\* Complete warranty details available from your local dealer or at [www.amana-hac.com](http://www.amana-hac.com). To receive the 10-Year Control Limited Warranty, the control must be installed in conjunction with a new furnace or air handler containing a communicating system that is compatible with the control and, if that furnace/air handler is a Goodman or Amana brand unit, that furnace/air handler must have been registered online within 60 days of installation of the furnace/air handler. Failure by Quebec or California residents to have registered a Goodman or Amana brand furnace/air handler does not diminish their warranty rights.

### ComfortNet Family of Products

- Air Conditioners: DSXC18, DSXC16
- Heat Pumps: DSZC18, DSZC16
- Gas Furnaces: GMVM96, GCVM86, GMVC95, GCVC95, GMVC8
- Air Handlers: AVPTC, MBVC

## COMFORTNET™ COMMUNICATING CONTROL & SYSTEM — CTK02

The ComfortNet™ brand CTK02 programmable or non-programmable touchscreen high-definition digital control for residential and light commercial applications works with our Goodman® brand ComfortNet-ready heating and cooling systems.

### Product Features

- Advanced modulation control
- Independent humidification control
- Dehumidification control
- Removable faceplate (gray and white included)
- Intuitive installer menus
- Adjustable maximum heat and cool settings
- Extra-large touchpad for easy operation
- Easy-to-read character size
- Advanced diagnostics and fault code display
- Fahrenheit/Celsius display
- Optional continuous LED back-lighted display
- Maximum four-wire low-voltage control wiring connection
- Only two wires required to outdoor unit when used with optional outdoor transformer
- Auto-setup and configuration of dipswitches
- Hard-wired with battery back-up
- Meets California Building Code, Title 24
- Fast or slow heating cycle anticipation
- Fast energizing between stages of heat and cool
- Active system diagnostics
- Exclusive “Call for Service” diagnostic indicator
- Dual-fuel heat pump compatible
- Mueable audio beep alert on key press
- Humidifier pad maintenance reminder
- Air filter maintenance reminder
- UV lamp maintenance reminder
- Humidifier pad replacement reminder
- Adjustable brightness and keypad adjustment
- Customizable home screen
- Low-profile design
- Seven-day programmable system
- Four steps per daily schedule sequence
- Simultaneous heat and cool program storage
- Auto heat / cool change-over option: automatically switches between heating and cooling programs
- Selectable continuous fan speeds
- Dehumidification control
- Airflow speed trimming adjustment
- Energy Management Recovery program (EMR)
- Program-loss, start-up temperature
- USB uploadable dealer information and set-point profiles



\* Complete warranty details available from your local dealer or at [www.amana-hac.com](http://www.amana-hac.com). To receive the 10-Year Control Limited Warranty, the control must be installed in conjunction with a new furnace or air handler containing a communicating system that is compatible with the control and, if that furnace/air handler is a Goodman® or Amana® brand unit, that furnace/air handler must have been registered online within 60 days of installation of the furnace/air handler. Failure by Quebec or California residents to have registered a Goodman® or Amana® brand furnace/air handler does not diminish their warranty rights.

### ComfortNet Family of Products

- Air Conditioners: DSXC18, DSXC16
- Heat Pumps: DSZC18, DSZC16
- Gas Furnaces: GMVM96, GCMV86, GMVC95, GCVC95, GMVC8
- Air Handlers: AVPTC, MBVC

## TOUCHSCREEN THERMOSTATS FOR RESIDENTIAL & LIGHT COMMERCIAL APPLICATIONS



\* Complete warranty details available from your local dealer or at [www.amana-hac.com](http://www.amana-hac.com).

### *Product Features*

- Customizable wallpaper and slide show
- Built-in nature and holiday wallpaper themes
- Customizable service alerts
- “Simple as you want” operation with easy-to-read display
- TouchScreen assistant for fast and easy programming
- SD memory card for easy importing and exporting of thermostat data, including copying data between thermostats
- At-a-glance screen lets users see temperature and heating/cooling status
- Programmable fan and night-time dimmer
- 7-Day programmable scheduler
- Switchable programmable or non-programmable
- Up to 4 heat & 2 cool stages
- Automatic daylight savings adjustments
- 7-Day energy usage graph
- Passcode security for screen lock and set-point limits
- Multiple languages: English, Spanish, and French
- Gas/electric or heat pump control
- Universal compatibility including dual fuel



# ACCESSORIES

## SPLIT SYSTEMS

### AIR CONDITIONERS

ITEM #	DESCRIPTION
ABK-20	Anchor Bracket Kit <sup>1</sup>
ABK-21	Anchor Bracket Kit <sup>1</sup> (for 23½" chassis)
ASC-01A	Anti-Short Cycle Kit
B1141643	24V Transformer <sup>2</sup>
CSR-U-1/2/3	Hard-Start Kits
FSK-01A	Freeze Protection Kit <sup>3</sup>
LAKT01A	Low Ambient Control for 14-16 SEER units; can only be used with TXV-equipped indoor coil
LSK-02A	Liquid Line Solenoid
OT18-60A	Outdoor Thermostat w/ Lockout Stat <sup>4</sup>
TX2N4 / TX3N4 / TX5N4	Non-bleed TXV Kits – R-410A
TXV-30 / TXV-42 / TXV-48 / TXV-60	Non-bleed TXV Kits – R-410A

<sup>1</sup> Contains 20 brackets; four brackets needed to anchor unit to pad

<sup>2</sup> Available in 24V legacy mode only. This feature is integrated in the communicating mode.

<sup>3</sup> Installed on indoor coil

<sup>4</sup> Available in 24V legacy mode only. This feature is integrated in the communicating mode. Required for heat pump applications where ambient temperature falls below 0° F with 50% or higher relative humidity.

### HEAT PUMPS

ITEM #	DESCRIPTION
ABK-20	Anchor Bracket Kit <sup>1</sup>
ABK-21	Anchor Bracket Kit <sup>1</sup> (for 23½" chassis)
AFE18-60A	All-fuel Kit <sup>2</sup>
ASC-01A	Anti-Short Cycle Kit
B1141643	24V Transformer <sup>3</sup>
CSB-16 / CSB-15	Sound Blanket Kit
CSR-U-1/2/3	Hard-Start Kits
EH18-60	Emergency Heat Relay Kit
FSK01A	Freeze Protection Kit <sup>4</sup>
HPSK-01	Heat Pump Shut-off Relay; for ACNF Air Handlers
LAKT01A	Low Ambient Control for 14-16 SEER units; can only be used with TXV-equipped indoor coil
OT18-60A	Outdoor Thermostat w/ Lockout Stat <sup>5</sup>
TX2N4A / TX3N4 / TX5N4	TXV Kits <sup>6</sup>

<sup>1</sup> Contains 20 brackets; four brackets needed to anchor unit to pad

<sup>2</sup> Required for use with a dual-fuel split system heat pump system

<sup>3</sup> Available in 24V legacy mode only. This feature is integrated in the communicating mode.

<sup>4</sup> Installed on indoor coil

<sup>5</sup> Available in 24V legacy mode only. This feature is integrated in the communicating mode. Required for heat pump applications where ambient temperature falls below 0° F with 50% or higher relative humidity.

<sup>6</sup> Condensing units and heat pumps with reciprocating compressors require the use of start-assist components when used in conjunction with an indoor coil using a non-bleed thermal expansion valve refrigerant metering device. The TXV should always be sized based on the tonnage of the outdoor unit.

## GAS FURNACES

ITEM #	DESCRIPTION	FOR USE WITH
DCVK-20	Concentric Vent Kit (2")	90% Furnaces with 2" Vent
DCVK-30	Concentric Vent Kit (3")	90% Furnaces with 3" Vent
DEHUM1	Dehumidistat	All 2 Stage Variable-Speed Furnaces
CFB21	Downflow Floor Base	90% Downflow Furnaces 21" Wide
CFB24	Downflow Floor Base	90% Downflow Furnaces 24.5" Wide
CFB17	Downflow Floor Base	90% Downflow Furnaces 17.5" Wide
SBT14	Downflow Sub-Base	80% Downflow Furnaces 14" Wide
SBT17	Downflow Sub-Base	80% Downflow Furnaces 17.5" Wide
SBT21	Downflow Sub-Base	80% Downflow Furnaces 21" Wide
RF000142	Drain Kit for Horizontal Left Installation	All 90% Furnaces
EFR01	External Filter Rack with 16"x25" Permanent Filter	All Furnaces
017K000005	Flush Mount Vent Kit	All 90% Furnaces
AFE18-60A	Fossil Fuel (Duel Fuel) Kit	All Furnaces Applied with Heat Pumps
FSRKG-14/17/21/24	Furnace Noise Reduction Kits	80% Furnaces (Except Downflow)
HANG21	High-Altitude Natural Gas Kit (+5,500 Ft)	80% Single-Stage and Hybrid Furnaces
HA02	High-Altitude Natural Gas Kit (+7,000 Ft)	80% Two-Stage Furnaces
HANG11 - HANG16	High-Altitude Natural Gas Kits - 90% Furnaces	See Furnace Spec Sheet for Specific Kit Number
HAPS27 - HAPS31	High-Altitude Pressure Switch Kits - 90% Furnaces	See Furnace Spec Sheet for Specific Kit Number
HALP10 - HALP13	High-Altitude LP Gas Kits - 90% Furnaces	See Furnace Spec Sheet for Specific Kit Number
0270K00012	Horizontal Conversion Pressure Switch Kit	GKS9 Furnaces
LPLP03	Low LP Gas Pressure Switch	All Furnaces Converted to LP Gas
LPM-06	LP Conversion Kit (Springs & Orifice)	All Hybrid and Two-Stage Furnaces
LPT-03	LP Conversion Kit (Springs & Orifice)	All Single-Stage Furnaces
LPKMOD	LP Conversion Kits (Gas Valve)	All Modulating Furnaces
MVK-01	Masonry Vent Kits (Upflow Applications Only)	80% Furnaces except GMS8120 & GMS8140
MVK-02	Masonry Vent Kits (Upflow Applications Only)	GMS8120 & GMS8140 Furnaces Only
FTK04	Twinning Kit	80% & 90% Furnaces (for non-ECM motors)

## EXPANSION VALVE KIT MATCH-UPS FOR AIR CONDITIONERS & HEAT PUMPS

ITEM #	DESCRIPTION	APPLICABLE UNITS
TX2N2	Expansion Valve Kit, Non-bleed: Field-installed for 1½ to 2 tons (R-22)	Air Handlers: ASPT, ASUF, ARPT, ARUF
TX2N4	Expansion Valve Kit, Non-bleed: Field-installed for 1½ to 2 tons (R-410A)	
TX3N2	Expansion Valve Kit, Non-bleed: Field-installed for 2 to 3 tons (R-22)	Coils: CAUF, CAPF, CAPT, CHPF, CSCF
TX3N4	Expansion Valve Kit, Non-bleed: Field-installed for 2 to 3 tons (R-410A)	
TX5N2	Expansion Valve Kit, Non-bleed: Field-installed for 3½ to 5 tons (R-22)	
TX5N4	Expansion Valve Kit, Non-bleed: Field-installed for 3½ to 5 tons (R-410A)	

**PACKAGED UNITS**

**AIR CONDITIONERS & HEAT PUMPS**

ACCESSORY DESCRIPTION FOR GPC15M/GPH15M & GPC13M/GPH13M	ITEM NUMBER	
	MEDIUM CHASSIS	LARGE CHASSIS
Concentric Kit	CDK36	CDK4872
Downflow Economizer	GPH13MED102	GPH13MED103
Downflow Internal Filter Rack	GPH13MFR102	GPH13MFR103
Downflow Manual Damper	PGMDD101/102	PGMDD103
Downflow Motorized Damper	PGMDMD101/102	PGMDMD103
Downflow Square-to-Round	SQRPG101/102	SQRPG103
External Horizontal Filter Rack	GPGHFR101-103	GPGHFR101-103
Horizontal Duct Cover	20464501PDGK	20464502PDGK
Horizontal Economizer	PEHH101/102	PEHH103
Horizontal Manual Damper	PGMDH102	PGMDH103
Horizontal Motorized Damper	PGMDMH102	PGMDMH103
Horizontal Square-to-Round	SQRPGH101/102	SQRPGH103
Outdoor Thermostat & Emergency Heat Relay Kit	OT/EHR18-60	OT/EHR18-60
Outdoor Thermostat Kit w/ Lockout Stat	OT18-60A	OT18-60A
Roof Curb	PGC101/102/103	PGC101/102/103

ACCESSORY DESCRIPTION FOR GPC14H/GPH14H & GPC13H/GPH13H	ITEM NUMBER	
	SMALL CHASSIS	MEDIUM/LARGE CHASSIS
Downflow Economizer	PCE101-103	PCE101-103
Downflow Plenum Kit	PCP101-103	PCP101-103
Downflow Plenum Kit (R-8)	PCP101-103 R8	PCP101-103 R8
Elbow Flashing w/ R-8 Liner	PCEF101-103	PCEF101-103
Emergency Heat Relay	OT/EHR18-60	OT/EHR18-60
External Horizontal Filter Rack	GPGHFR101-103	GPGHFR101-103
Horizontal Economizer	PEHH101-103	PEHH101-103
Manual Damper	PCMD101-103	PCMD101-103
Manual Damper: Horizontal Application	PCMDH101-103	PCMDH101-103
Motorized Damper	PCMDM101-103	PCMDM101-103
Outdoor Thermostat w/ Lockout Stat	OT18-60A	OT18-60A
Roof Curb	PCCP101-103	PCCP101-103
Square-to-Round	SQRPC101	SQRPC102/103
Square-to-Round for Horizontal Application	SQRPCH101	SQRPCH102/103
Single-Point Kit	SPK-30/ 35/ 40	SPK-45/ 50/ 60



## PACKAGED UNITS (CONT.)

### GAS/ELECTRIC UNITS

ACCESSORY DESCRIPTION FOR GPG15M	ITEM NUMBER	
	SMALL CHASSIS	MEDIUM/LARGE CHASSIS
Concentric Kit	CDK36	CDK4872
Downflow Economizer	PGED101/102	PGED103
Downflow Internal Filter Rack	PGFR101/102/103	PGFR101/102/103
Downflow Manual Damper	PGMDD102	PGMDD103
Downflow Motorized Damper	PGMDMD102	PGMDMD103
Downflow Square-to-Round	SQRPG101/102	SQRPG103
Horizontal Duct Cover	20464501PDGK	20464502PDGK
Horizontal Economizer	PGEH102	PGEH103
Horizontal Manual Damper	PGMDH102	PGMDH103
Horizontal Motorized Damper	PGMDMH102	PGMDMH103
Horizontal Square-to-Round	SQRPGH102	SQRPGH103
LP Kit	LPM-06	LPM-06
Roof Curb	PGC101/102/103	PGC101/102/103

ACCESSORY DESCRIPTION FOR GPG13M	ITEM NUMBER	
	SMALL CHASSIS	MEDIUM/LARGE CHASSIS
Concentric Kit	CDK36	CDK4872
Downflow Economizer	PGED101/102	PGED103
Downflow Internal Filter Rack	PGFR101/102/103	PGFR101/102/103
Downflow Manual Damper	PGMDD101/102	PGMDD103
Downflow Motorized Damper	PGMDMD101/102	PGMDMD103
Downflow Square-to-Round	SQRPG101/102	SQRPG103
External Horizontal Filter Rack	GPGHFR101-103	GPGHFR101-103
Horizontal Duct Cover	20464501PDGK	20464502PDGK
Horizontal Economizer	PGEH101/102	PGEH103
Horizontal Manual Damper	PGMDH102	PGMDH103
Horizontal Motorized Damper	PGMDMH102	PGMDMH103
Horizontal Square-to-Round	SQRPGH101/102	SQRPGH103
LP Conversion Kit	LPT-03	LPT-03
Roof Curb	PGC101/102/103	PGC101/102/103

### DUAL-FUEL UNITS

ACCESSORY DESCRIPTION FOR GPD14M	ITEM NUMBER	
	MEDIUM CHASSIS	LARGE CHASSIS
Concentric Kit	CDK36	CDK4872
Downflow Economizer	PDED101/102	PDED103
Downflow Manual Damper	PGMDD101/102	PGMDD103
Downflow Motorized Damper	PGMDMD101/102	PGMDMD103
Downflow Square-to-Round	SQRPG101/102	SQRPG103
Downflow Internal Filter Rack	PGFR101/102/103	PGFR101/102/103
External Horizontal Filter Rack	GPGHFR101-103	GPGHFR101-103
Horizontal Duct Cover	20464501PDGK	20464502PDGK
Horizontal Economizer	PDEH101/102	PDEH103
Horizontal Manual Damper	PGMDH102	PGMDH103
Horizontal Motorized Damper	PGMDMH102	PGMDMH103
Horizontal Square-to-Round	SQRPGH101/102	SQRPGH103
LP Conversion Kit	LPM-05	LPM-05
Outdoor Thermostat w/ Housing	OTDFPKG-01	OTDFPKG-01
Roof Curb	PGC101/102/103	PGC101/102/103

**PACKAGED UNITS — HEAT KIT MATCH-UPS**

**GPC13H MATCH-UPS**

GPC1324H41\*\*  
 HKR-05\*, HKR-05C\*  
 HKR-08\*, HKR-08C\*  
 HKR-10\*, HKR-10C\*

GPC1330H41\*\*  
 HKR-05\*, HKR-05C\*  
 HKR-08\*, HKR-08C\*  
 HKR-10\*, HKR-10C\*  
 HKP-15C\*

GPC1336H41\*\*  
 HKR-05\*, HKR-05C\*  
 HKR-08\*, HKR-08C\*  
 HKR-10\*, HKR-10C\*  
 HKP-15C\*

GPC1342H41\*\*  
 HKR-05\*, HKR-05C\*  
 HKR-08\*, HKR-08C\*  
 HKR-10\*, HKR-10C\*  
 HKP-15C\*  
 HKP-20C

GPC1349H41\*\*  
 HKR-05\*, HKR-05C\*  
 HKR-08\*, HKR-08C\*  
 HKR-10\*, HKR-10C\*  
 HKP-15C  
 HKP-20C

GPC1360H41\*\*  
 HKR-05\*, HKR-05C\*  
 HKR-08\*, HKR-08C\*  
 HKR-10\*, HKR-10C\*  
 HKP-15C  
 HKP-20C

**GPC14H MATCH-UPS**

GPC1424H41\*\*  
 HKR-05\*, HKR-05C\*  
 HKR-08\*, HKR-08C\*  
 HKR-10\*, HKR-10C\*

GPC1430H41\*\*  
 HKR-05\*, HKR-05C\*  
 HKR-08\*, HKR-08C\*  
 HKR-10\*, HKR-10C\*  
 HKP-15C\*

GPC1436H41\*\*  
 HKR-05\*, HKR-05C\*  
 HKR-08\*, HKR-08C\*  
 HKR-10\*, HKR-10C\*  
 HKP-15C\*

GPC1442H41\*\*  
 HKR-05\*, HKR-05C\*  
 HKR-08\*, HKR-08C\*  
 HKR-10\*, HKR-10C\*  
 HKP-15C\*  
 HKP-20C

GPC1448H41\*\*  
 HKR-05\*, HKR-05C\*  
 HKR-08\*, HKR-08C\*  
 HKR-10\*, HKR-10C\*  
 HKP-15C\*  
 HKP-20C

GPC1460H41\*\*  
 HKR-05\*, HKR-05C\*  
 HKR-08\*, HKR-08C\*  
 HKR-10\*, HKR-10C\*  
 HKP-15C\*  
 HKP-20C

**GPC13M MATCH-UPS**

GPC1336M41\*\*  
 HKR-05\*, HKR-05C\*  
 HKR-08\*, HKR-08C\*  
 HKR-10\*, HKR-10C\*

HKP-15C\*  
 GPC1348M41\*\*  
 HKR-05\*, HKR-05C\*  
 HKR-08\*, HKR-08C\*  
 HKR-10\*, HKR-10C\*

HKP-15C\*  
 HKP-20C  
 GPC1360M41\*\*  
 HKR-05\*, HKR-05C\*  
 HKR-08\*, HKR-08C\*  
 HKR-10\*, HKR-10C\*

HKP-15C\*  
 HKP-20C

**GPC15M MATCH-UPS**

GPC1524M41  
 HKR-05\*, HKR-05C\*  
 HKR-08\*, HKR-08C\*  
 HKR-10\*, HKR-10C\*

GPC1530M41  
 HKR-05\*, HKR-05C\*  
 HKR-08\*, HKR-08C\*  
 HKR-10\*, HKR-10C\*  
 HKP-15C\*

GPC1536M41  
 HKR-05\*, HKR-05C\*  
 HKR-08\*, HKR-08C\*  
 HKR-10\*, HKR-10C\*  
 HKP-15C\*

GPC1542M41  
 HKR-05\*, HKR-05C\*  
 HKR-08\*, HKR-08C\*  
 HKR-10\*, HKR-10C\*  
 HKP-15C\*

GPC1548M41  
 HKR-05\*, HKR-05C\*  
 HKR-08\*, HKR-08C\*  
 HKR-10\*, HKR-10C\*  
 HKP-15C\*  
 HKP-20C

## PACKAGED UNITS — HEAT KIT MATCH-UPS (CONT.)

<b>GPH13H MATCH-UPS</b>	<b>GPH14H MATCH-UPS</b>	<b>GPH13M MATCH-UPS</b>	<b>GPH15M MATCH-UPS</b>
GPH1324H41**	GPH1424H41A*	GPH1324M41**	GPH1524M41A*
HKR-05*, HKR-05C*	HKR-05*, HKR-05C*	HKR-05*, HKR-05C*	HKR-05*, HKR-05C*
HKR-08*, HKR-08C*	HKR-08*, HKR-08C*	HKR-08*, HKR-08C*	HKR-08*, HKR-08C*
HKR-10*, HKR-10C*	HKR-10*, HKR-10C*	HKR-10*, HKR-10C*	HKR-10*, HKR-10C*
GPH1330H41**	GPH1430H41A*	GPH1330M41**	GPH1530M41A*
HKR-05*, HKR-05C*	HKR-05*, HKR-05C*	HKR-05*, HKR-05C*	HKR-05*, HKR-05C*
HKR-08*, HKR-08C*	HKR-08*, HKR-08C*	HKR-08*, HKR-08C*	HKR-08*, HKR-08C*
HKR-10*, HKR-10C*	HKR-10*, HKR-10C*	HKR-10*, HKR-10C*	HKR-10*, HKR-10C*
HKP-15C*	HKP-15C*	HKP-15C*	HKP-15C*
GPH1336H41**	GPH1436H41A*	GPH1336M41**	GPH1536M41A*
HKR-05*, HKR-05C*	HKR-05*, HKR-05C*	HKR-05*, HKR-05C*	HKR-05*, HKR-05C*
HKR-08*, HKR-08C*	HKR-08*, HKR-08C*	HKR-08*, HKR-08C*	HKR-08*, HKR-08C*
HKR-10*, HKR-10C*	HKR-10*, HKR-10C*	HKR-10*, HKR-10C*	HKR-10*, HKR-10C*
HKP-15C*	HKP-15C*	HKP-15C*	HKP-15C*
GPH1342H41**	GPH1442H41A*	GPH1342M41**	GPH1543M41A*
HKR-05*, HKR-05C*	HKR-05*, HKR-05C*	HKR-05*, HKR-05C*	HKR-05*, HKR-05C*
HKR-08*, HKR-08C*	HKR-08*, HKR-08C*	HKR-08*, HKR-08C*	HKR-08*, HKR-08C*
HKR-10*, HKR-10C*	HKR-10*, HKR-10C*	HKR-10*, HKR-10C*	HKR-10*, HKR-10C*
HKP-15C*	HKP-15C*	HKP-15C*	HKP-15C*
HKP-20C	HKP-20C		
GPH1348H41**	GPH1348H41A*	GPH1348M41**	GPH1549M41A*
HKR-05*, HKR-05C*	HKR-05*, HKR-05C*	HKR-05*, HKR-05C*	HKR-05*, HKR-05C*
HKR-08*, HKR-08C*	HKR-08*, HKR-08C*	HKR-08*, HKR-08C*	HKR-08*, HKR-08C*
HKR-10*, HKR-10C*	HKR-10*, HKR-10C*	HKR-10*, HKR-10C*	HKR-10*, HKR-10C*
HKP-15C*	HKP-15C*	HKP-15C*	HKP-15C*
HKP-20C	HKP-20C	HKP-20C	HKP-20C
GPH1360H41**	GPH1460H41A*	GPH1360M41**	GPH1560M41A*
HKR-05*, HKR-05C*	HKR-05*, HKR-05C*	HKR-05*, HKR-05C*	HKR-05*, HKR-05C*
HKR-08*, HKR-08C*	HKR-08*, HKR-08C*	HKR-08*, HKR-08C*	HKR-08*, HKR-08C*
HKR-10*, HKR-10C*	HKR-10*, HKR-10C*	HKR-10*, HKR-10C*	HKR-10*, HKR-10C*
HKP-15C*	HKP-15C*	HKP-15C*	HKP-15C*
HKP-20C	HKP-20C	HKP-20C	HKP-20C





ARK I YORK

(15) RADOB

RETORE  
RADOB

 **DAIKIN** DUCTLESS SYSTEMS

# KE | WALL-MOUNTED

UP TO 18 SEER 8.5 HSPF

DUCTLESS SYSTEMS

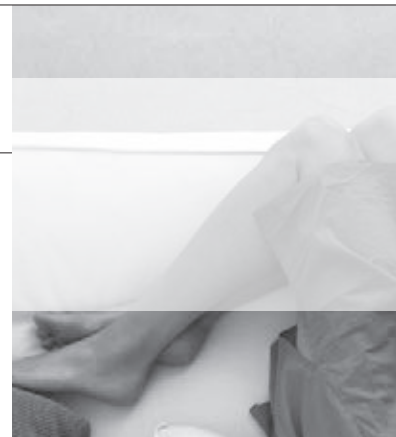
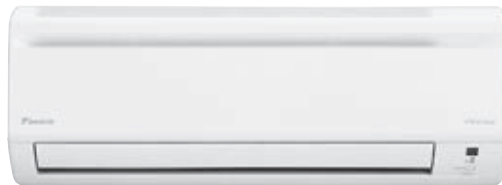
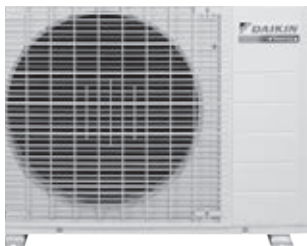
SYSTEM PERFORMANCE		0.75 TON	1.0 TON	1.0 TON	1.5 TON	2.0 TON
Indoor Model#		FTXN09KEVJU5	FTXN12KEVJU5	FTXN15KVJU	FTXN18KVJU	FTXN24KVJU
Outdoor Model #	Cooling Only	RKN09KEVJU5	RKN12KEVJU5	RKN15KEVJU5	RKN18KEVJU5	RKN24KEVJU5
	Heat Pump	RXN09KEVJU5	RXN12KEVJU5	RXN15KEVJU5	RXN18KEVJU5	RXN24KEVJU5
Cooling Capacity (Rated) (BTU/h)		9,000	12,000	15,000	18,000	22,000
Cooling Capacity (Min – Max) (BTU/h)		4,400 – 9,500	4,400 – 12,000	5,800 – 15,000	5,800 – 18,000	5,800 – 22,000
Heating Capacity (Rated) <sup>†</sup> (BTU/h)		10,000	13,500	18,000	21,600	24,000
Heating Capacity (Min – Max) <sup>†</sup> (BTU/h)		4,400 – 11,600	4,400 – 16,400	5,800 – 21,200	5,800 – 24,000	5,800 – 25,400
SEER / HSPF		18 / 8.5	18 / 8.5	18 / 8.5	18 / 8.5	18 / 8.5
COP / EER		3.49 / 12.0	3.25 / 9.9	3.49 / 12.0	2.88 / 12.0	2.78 / 8.6
Power Supply (Voltage-Phase-Hz)		208/230V-1-60	208/230V-1-60	208/230V-1-60	208/230V-1-60	208/230V-1-60
Minimum Circuit Amps		4.8	7.0	15.5	15.5	15.5
Maximum Overcurrent Protection (A)		15.0	15.0	20.0	20.0	20.0 Ø
Liquid Piping Connections (O.D.) (in.)		Ø 1/4	1/4	Ø 1/4	Ø 1/4	Ø 1/4
Gas Piping Connections (O.D.) (in.)		Ø 3/8	Ø 3/8	Ø 1/2	Ø 1/2	Ø 1/2
Condensate Drain (in.)		Ø 5/8	Ø 5/8	Ø 11/16	Ø 11/16	Ø 11/16
Max. Piping Length (ft.)		65.6	65.6	98.2	98.2	98.2
Max. Piping Height (ft.)		49.2	49.2	65.6	65.6	65.6

<sup>†</sup> Applicable to heat pump models only.

## COMFORTABLE LIMITED WARRANTY\* PROTECTION



\*Complete warranty details available from your local dealer or at [www.daikincomfort.com](http://www.daikincomfort.com). To receive the 10-Year Parts Limited Warranty, online registration must be completed within 60 days of installation. Online registration is not required in California or Quebec.



- Standby electricity saving reduces electricity consumption by up to 90% when the unit is not in operation.
- Econo-mode decreases power consumption during start-up when other appliances need more power.

- Titanium apatite photocatalytic air purification filter attracts microscopic particles that can carry bacteria and viruses.

- Whisper-quiet operation with sound levels as low as 22 dB(A).
- Available from 9,000 BTU/h to 24,000 BTU/h in heat pump and cooling-only models.

# LV | WALL-MOUNTED UNITS

UP TO 24.5 SEER & 12.5 HSPF

HIGH-EFFICIENCY SYSTEM PERFORMANCE	0.75 TONS	1.0 TONS	1.25 TONS	1.5 TONS	2.0 TONS
Indoor Model#	FTXS09LVJU	FTXS12LVJU	FTXS15LVJU	FTXS18LVJU	FTXS24LVJU
Outdoor Model #	RXS09LVJU	RXS12LVJU	RXS15LVJU	RXS18LVJU	RXS24LVJU
Cooling Capacity (Rated) (BTU/h)	10,600	13,800	18,000	21,600	25,800
Cooling Capacity (Min – Max) (BTU/h)	4,400 – 10,600	4,800 – 13,800	5,800 – 18,000	5,800 – 21,600	7,800 – 25,800
Heating Capacity (Rated) <sup>†</sup> (BTU/h)	15,600	14,400	18,000	21,600	25,400
Heating Capacity (Min – Max) <sup>†</sup> (BTU/h)	4,400 – 15,600	4,800 – 18,000	5,800 – 22,300	5,800 – 26,700	7,800 – 31,400
SEER / HSPF	24.5 / 12.5	23 / 12.5	20.6 / 11.6	20.3 / 11	20.0 / 10.6
COP / EER	4.46 / 15.3	4.35 / 12.8	4.00 / 14.4	3.70 / 12.7	3.37 / 12.5
Power Supply (Voltage-Phase-Hz)	208/230V-1-60	208/230V-1-60	208/230V-1-60	208/230V-1-60	208/230V-1-60
Minimum Circuit Amps	8.00	8.75	13.75	13.75	17.50
Maximum Overcurrent Protection (A)	15.0	15.0	20.0	20.0	20.0
Liquid Piping Connections (O.D.) (in.)	Ø 1/4	Ø 1/4	Ø 1/4	Ø 1/4	Ø 1/4
Gas Piping Connections (O.D.) (in.)	Ø 3/8	Ø 3/8	Ø 1/2	Ø 1/2	Ø 5/8
Condensate Drain (in.)	Ø 5/8	Ø 5/8	Ø 5/8	Ø 5/8	Ø 5/8
Max. Piping Length (ft.)	65.6	65.6	98.4	98.4	98.4
Max. Piping Height (ft.)	49.2	49.2	65.6	65.6	65.6

<sup>†</sup> Applicable to heat pump models only.

DUCTLESS SYSTEMS



\*Complete warranty details available from your local dealer or at [www.daikincomfort.com](http://www.daikincomfort.com). To receive the 12-Year Parts Limited Warranty, online registration must be completed within 60 days of installation. Online registration is not required in California or Quebec.

COMFORTABLE LIMITED WARRANTY\* PROTECTION



- Intelligent eye adjusts between normal operation and energy-saving mode by using a motion-detecting sensor to monitor occupancy, resulting in heating and cooling savings

- Titanium apatite photocatalytic air purification filter attracts microscopic particles that can carry bacteria and viruses
- Weekly timer offers the ability to program up to four settings per day

- 3-D airflow combines vertical and horizontal auto-swing to circulate warm or cool air throughout large spaces
- Available from 9,000 BTU/h to 24,000 BTU/h in heat pump models

# LV | SLIM-DUCT UNITS

UP TO 15.5 SEER & 10.4 HSPF

DUCTLESS SYSTEMS

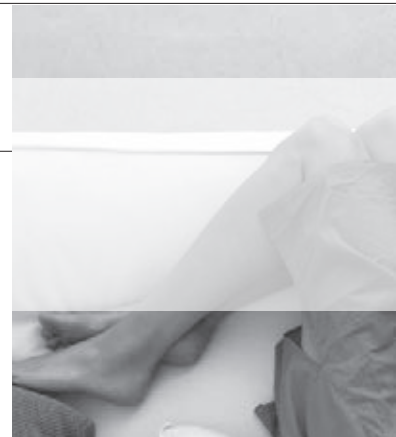
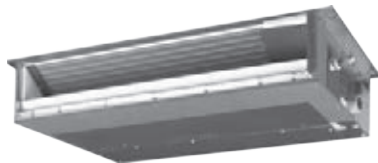
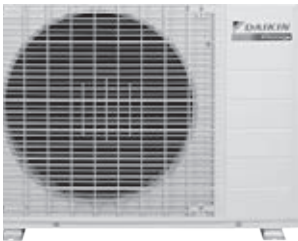
HIGH-EFFICIENCY SYSTEM PERFORMANCE	0.75 TONS	1.0 TONS
Indoor Model#	FDXS09LVJU	FDXS12LVJU
Outdoor Model #	RXS09LVJU	RXS09LVJU
Cooling Capacity (Rated) (BTU/h)	8,500	11,500
Cooling Capacity (Min – Max) (BTU/h)	4,400 – 8,500	4,800 – 11,500
Heating Capacity (Rated) <sup>†</sup> (BTU/h)	10,000	11,500
Heating Capacity (Min – Max) <sup>†</sup> (BTU/h)	4,400 – 10,000	4,800 – 11,500
SEER / HSPF	15.1 / 10.3	15.5 / 10.4
COP / EER	3.45 / 11.2	3.51 / 9.1
Power Supply (Voltage-Phase-Hz)	208/230V-1-60	208/230V-1-60
Minimum Circuit Amps	8.00	8.75
Maximum Overcurrent Protection (A)	15	15
Liquid Piping Connections (O.D.) (in.)	Ø 1/4	Ø 1/4
Gas Piping Connections (O.D.) (in.)	Ø 3/8	Ø 3/8
Condensate Drain (in.)	Ø 25/32	Ø 25/32
Max. Piping Length (ft.)	65.6	65.6
Max. Piping Height (ft.)	49.2	49.2

<sup>†</sup> Applicable to heat pump models only.

## COMFORTABLE LIMITED WARRANTY\* PROTECTION



\*Complete warranty details available from your local dealer or at [www.daikincomfort.com](http://www.daikincomfort.com). To receive the 12-Year Parts Limited Warranty, online registration must be completed within 60 days of installation. Online registration is not required in California or Quebec.



- Ductless or short-run ducted operation is perfect for bedrooms, basements, bathrooms and closets
- Increased energy savings with Econo-Mode function reduces operating current and power consumption during start-up
- Undisturbed comfort with indoor operating sound levels as low as 31 dB(A)



# QUATERNITY | WALL-MOUNTED

UP TO 26.1 SEER & 11.0 HSPF

NOMINAL TONS		0.75 Ton	1.0 Ton	1.25 Ton
Indoor Model#		FTXG09HVJU	FTXG12HVJU	FTXG15HVJU
Outdoor Model#		RXG09HVJU	RXG12HVJU	RXG15HVJU
Cooling Capacity (Rated)	BTU/h	9,000	12,000	15,000
Cooling Capacity (Min – Max)	BTU/h	5,300 – 12,300	5,300 – 15,700	5,300 – 18,000
Heating Capacity (Rated) †	BTU/h	12,000	16,000	18,000
Heating Capacity (Min – Max) †	BTU/h	4,400 – 18,000	4,400 – 19,100	4,400 – 21,200
SEER / HSPF		26.1 / 11.0	24.2 / 10.6	21.0 / 10.0
COP / EER		4.51 / 15.8	4.04 / 14.0	3.99 / 12.9
Power Supply (Voltage/Phase)		208/230V/1	208/230V/1	208/230V/1
Minimum Circuit Amps	A	14.5	14.5	14.5
MOCP	A	15.0	15.0	15.0
Liquid Piping Connections (O.D.)	in.	Ø 1/4	Ø 1/4	Ø 1/4
Gas Piping Connections (O.D.)	in.	Ø 3/8	Ø 3/8	Ø 3/8
Condensate Drain	A	Ø 11/16	Ø 11/16	Ø 11/16
Max. Piping Length	ft.	32	32	32
Max. Piping Height	ft.	26	26	26

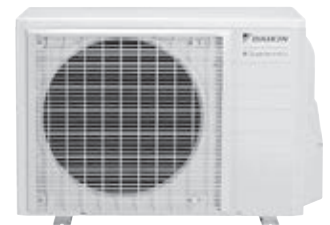
† Applicable to heat pump models only.

DUCTLESS SYSTEMS



\*Complete warranty details available from your local dealer or at [www.daikincomfort.com](http://www.daikincomfort.com). To receive the 12-Year Parts Limited Warranty, online registration must be completed within 60 days of installation. Online registration is not required in California or Quebec.

COMFORTABLE LIMITED WARRANTY\* PROTECTION



- Provides high-energy savings with systems up to SEER 26.1 and EER 15.8
- Controls humidity levels to a relative setting

- Reduces mold, odors, viruses, and bacteria with the “Flash Streamer” electronic air cleaner
- Delivers high-heating capacity at low ambient temperatures down to -4°F

- Offers simple, user-friendly wireless infra-red remote controller
- Operates at a whisper-quiet sound as low as 26 dB(A)

# MXS | MULTI-ZONE

## OUTDOOR UNITS

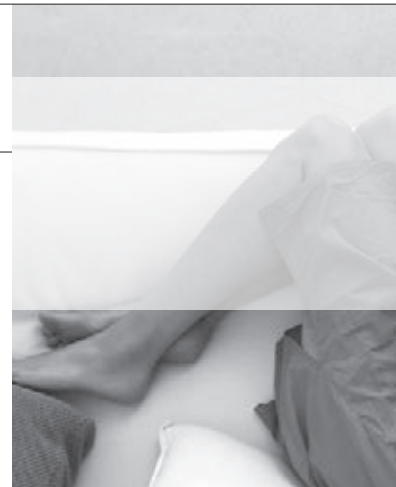
OUTDOOR MODEL	2MXS18GVJU	2MXS18GVJU	4MXS32GVJU	RMXS48LVJU
Nominal Capacity (BTU/h)	18,000	24,000	30,600	48,000
Max. Connective Cap (BTU/h)	18,000	39,000	45,000	62,400
Min – Max No. of Indoor Units	2	2 – 3	2 – 4	2 – 8
Power Supply (Voltage-Phase-Hz)	208/230V-1-60	208/230V-1-60	208/230V-1-60	208/230V-1-60
Minimum Circuit Amps	11.1	17.8	18.0	27.0
Maximum Overcurrent Protection (A)	20.0	20.0	20.0	30.0
Max. Total Piping Length	164	230	230	433
Max. Piping Length to Indoor	82	82	82	230
Max. Piping Height	49.2	49.2	49.2	98.4
SEER/HSPF (non-ducted)	19.5 / 9.2	16.6 / 9.0	17.2/9.3	18.8/11.3
SEER/HSPF (mixed)	16.3 / 8.5	14.3 / 8.35	15.25/8.6	16.5/10.5
SEER/HSPF (ducted)	13.0 / 7.7	13.0 / 7.7	13.3/7.9	14.1/9.6
COP / EER (non-ducted)	3.40 / 12.60	3.20 / 12.50	3.40 / 10.30	10.3 / 3.0
COP / EER (mixed)	3.15 / 10.80	3.15 / 10.80	3.00 / 8.40	9.8 / 2.9
COP / EER (ducted)	2.90 / 9.00	2.70 / 9.70	3.20 / 9.35	9.3 / 2.7

DUCTLESS SYSTEMS

### COMFORTABLE LIMITED WARRANTY\* PROTECTION



\*Complete warranty details available from your local dealer or at [www.daikincomfort.com](http://www.daikincomfort.com). To receive the 12-Year Parts Limited Warranty, online registration must be completed within 60 days of installation. Online registration is not required in California or Quebec.



- Ability to connect up to four indoor units to a single outdoor unit.

- Connects to multiple indoor unit styles: wall-mounted, 2x2 cassette, and slim-ducted models

- Reduced installation space
- Long piping lengths up to 433 ft.

## INDOOR UNITS

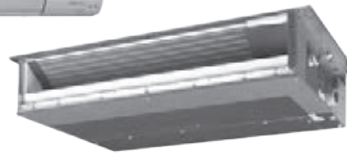
MXS INDOOR UNITS						
<b>WALL-MOUNTED UNITS</b>						
Indoor Model#	CTXS07LVJU	CTXS09HVJU	CTXS12HVJU	FTXS15LVJU	FTXS18LVJU	FTXS24LVJU
Cooling Capacity (Nominal) (BTU/h)	7,000	9,000	12,000	15,000	18,000	21,500
Heating Capacity (Nominal) (BTU/h)	8,500	12,000	14,400	18,000	21,600	25,400
Liquid Piping Connection (O.D.) (in.)	Ø 1/4	Ø 1/4	Ø 1/4	Ø 1/4	Ø 1/4	Ø 1/4
Gas Piping Connection (O.D.) (in.)	Ø 3/8	Ø 3/8	Ø 3/8	Ø 1/2	Ø 3/8	Ø 5/8
Condensate Drain (in.)	Ø 5/8	Ø 11/16	Ø 11/16	Ø 5/8	Ø 5/8	Ø 5/8
<b>SLIM-DUCT UNITS</b>						
Indoor Model#		FDXS09LVJU	FDXS12LVJU	CDXS15LVJU	CDXS18LVJU	CDXS24LVJU
Rated Capacity Class		9,000	12,000	15,000	18,000	24,000
External Static Pressure		0.12	0.12	0.16	0.16	0.16
Liquid Piping Connection (O.D.) (in.)		Ø 1/4	Ø 1/4	Ø 1/4	Ø 1/4	Ø 1/4
Gas Piping Connection (O.D.) (in.)		Ø 3/8	Ø 3/8	Ø 1/2	Ø 1/2	Ø 1/2
Condensate Drain (in.)		Ø 1-1/32	Ø 1-1/32	Ø 1-1/32	Ø 1-1/32	Ø 1-1/32
<b>2' X 2' CEILING CASSETTE UNITS</b>						
Indoor Model#		FFQ09LVJU	FFQ12LVJU	FFQ15LVJU	FFQ18LVJU	
Cooling Capacity (Nominal) (BTU/h)		9,500	12,000	15,000	18,000	
Heating Capacity (Nominal) (BTU/h)		11,100	14,000	17,500	21,500	
Liquid Piping Connection (O.D.) (in.)		Ø 1/4	Ø 1/4	Ø 1/4	Ø 1/4	
Gas Piping Connection (O.D.) (in.)		Ø 3/8	Ø 3/8	Ø 1/2	Ø 1/2	
Condensate Drain (in.)		Ø 1-1/32	Ø 1-1/32	Ø 1-1/32	Ø 1-1/32	

DUCTLESS SYSTEMS



\*Complete warranty details available from your local dealer or at [www.daikincomfort.com](http://www.daikincomfort.com). To receive the 12-Year Parts Limited Warranty, online registration must be completed within 60 days of installation. Online registration is not required in California or Quebec.

**COMFORTABLE LIMITED WARRANTY\* PROTECTION**



### Wall-Mounted Units

- Intelligent Eye occupancy sensor
- Weekly timer for programmable comfort
- Titanium apatite photocatalytic air purification

### Slim-Duct Units

- Static capability up to 0.16" W.G.
- Compact design (7 $\frac{3}{8}$ " in height)
- Rear or bottom return

### 2' X 2' Ceiling Cassette Units

- 2, 3, or 4-way airflow pattern
- Built-in condensate pump (up to 22")
- Fresh air intake knockout

# SKYAIR | OUTDOOR UNITS

## OVERVIEW

SkyAir is the ultimate ducted and duct free solution for light commercial and residential whole house applications. Ranging from 18,000 Btu/h to 42,000 Btu/h, these innovative systems provide energy efficiency, technological reliability and installation flexibility.

- DC fan motor improves efficiency compared to conventional AC motors.
- Aero spiral fan and grille minimizes turbulence and increases sound reduction.
- Reluctance brushless DC compressor increases efficiency.
- Swing compressor with friction reduction and quieter rotation or scroll compressor with robust and low sound design provides maximum durability.
- Long piping lengths up to 230 ft. allow layout flexibility.
- Anti-corrosion treatment on the outdoor heat exchanger increases durability.






DUCTLESS SYSTEMS



COMFORTABLE LIMITED  
WARRANTY\* PROTECTION



\*Complete warranty details available from your local dealer or at [www.daikincomfort.com](http://www.daikincomfort.com).

	INDOOR TYPE		FEATURES
DUCTLESS	Wall-Mounted Unit FAQ / FTXS		Wall-mounted FAQ / FTXS units are compact and made with a sophisticated design to blend in discretely with any interior décor. These units feature wide-angle louvers and auto-swing functions for comfortable airflow distribution.
	DC Ducted Concealed Ceiling Unit (Medium to High Static) FBQ		DC Ducted FBQ units offer a low profile design for an easily concealed look. At less than 12" in height, these built-in systems provide a powerful solution for any small to mid-size application.
	Ceiling-Mounted Round-flow Cassette FCQ		Round-flow ceiling cassette FCQ units provide an elegant and customizable solution ideal for open plan applications. Easily cleaned with airflow flexibility, systems are a low maintenance option for all around comfort.
	Ceiling-Suspended Unit FHQ		Ceiling-suspended FHQ units have a slim and elegant design for open or structured applications. With wide air openings and an innovative stream fan, operation is quiet and comfortable throughout the entire space.
Ducted	Vertical Air-Handling Unit FTQ		Daikin's inverter ducted FTQ units are a cost-effective, space-saving alternative to traditional systems. These systems are designed for quiet operation with superior heating capabilities.

DUCTLESS SYSTEMS



\*Complete warranty details available from your local dealer or at [www.daikincomfort.com](http://www.daikincomfort.com).

**COMFORTABLE LIMITED WARRANTY\* PROTECTION**

# SKYAIR | OUTDOOR UNITS

## FAQ WALL- MOUNT

DUCTLESS SYSTEMS

FAQ PERFORMANCE	1.5 TONS	2.0 TONS
Indoor Model#	FAQ18PVJU	FAQ24PVJU
Outdoor Model # (Cooling Only)	RZR18PVJU	RZR24PVJU
Outdoor Model # Heat Pump	RZQ18PVJU9	RZQ24PVJU9
Cooling Capacity (Rated) (BTU/h)	18,000	24,000
Heating Capacity (Rated) <sup>†</sup> (BTU/h)	20,000	26,000
SEER / HSPF	18.6 / 8.7	17.6 / 9.1
EER	12.7	10.2
Power Supply (Voltage-Phase-Hz)	208/230V-1-60	208/230V-1-60
Liquid Piping Connections (O.D.) (in.)	∅ 3/8	∅ 3/8
Gas Piping Connections (O.D.) (in.)	∅ 5/8	∅ 5/8
Condensate Drain (in.)	∅ 11/16	∅ 11/16
Dimensions (H" x W" x D")	11-3/8 x 41-3/8 x 9	
Net Weight	31	31
Max. Piping Length (ft.)	164	164
Max. Piping Height (ft.)	98	98

<sup>†</sup> Applicable to heat pump models only

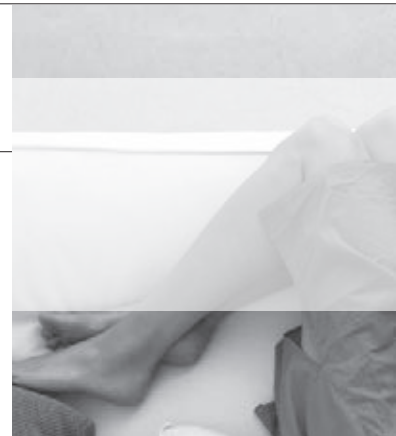
### COMFORTABLE LIMITED WARRANTY\* PROTECTION



\*Complete warranty details available from your local dealer or at [www.daikincomfort.com](http://www.daikincomfort.com).



- Vertical auto-swing function for efficient air distribution
- Removable front panel for easy cleaning
- Mold-resistant, washable filters



# SKYAIR | INDOOR UNITS

## FTXS WALL-MOUNT

FTXS PERFORMANCE	2.5 TONS	3.0 TONS
Indoor Model#	FTXS30LVJU	FTXS36LVJU
Outdoor Model# Cooling Only	RKS30LVJU	RKS36LVJU
Outdoor Model# Heat Pump	RXS30LVJU	RXS36LVJU
Cooling Capacity (Rated) (BTU/h)	30,000	36,000
Cooling Capacity (Min–Max) (BTU/h)	10,200 – 30,000	10,200 – 36,000
Heating Capacity (Rated) <sup>†</sup> (BTU/h)	34,800	38,000
Heating Capacity (Min–Max) <sup>†</sup> (BTU/h)	10,200 – 34,000	10,200 – 38,000
SEER / HSPF	19.3 / 8.3	17.9 / 8.3
EER	10.71	8.37
Minimum Circuit Amps	19.5	19.5
Maximum Overcurrent Protection (A)	20.0	20.0
Liquid Piping Connections (O.D.) (in.)	Ø 3/8	Ø 3/8
Gas Piping Connections (O.D.) (in.)	Ø 5/8	Ø 5/8
Condensate Drain (in.)	Ø 5/8	Ø 5/8
Max. Piping Length (ft.)	98.4	98.4
Max. Piping Height (ft.)	65.6	65.6

<sup>†</sup> Applicable to heat pump models only

DUCTLESS SYSTEMS



\*Complete warranty details available from your local dealer or at [www.daikincomfort.com](http://www.daikincomfort.com).

COMFORTABLE LIMITED WARRANTY\* PROTECTION

- Vertical auto-swing function for efficient air distribution
- Removable front panel for easy cleaning
- Mold-resistant, washable filters



# SKYAIR | INDOOR UNITS

## FBQ DC DUCTED

NOMINAL TONS	1.5 TONS	2.0 TONS	2.5 TONS	3.0 TONS	3.5 TONS
Indoor Model#	FBQ18PVJU	FBQ24PVJU	FBQ30PVJU	FBQ36PVJU	FBQ42PVJU
Outdoor Model # Cooling Only	RZR18PVJU	RZR24PVJU	RZR30PVJU	RZR36PVJU	RZR42PVJU
Outdoor Model # Heat Pump	RZQ18PVJU9	RZQ24PVJU9	RZQ30PVJU	RZQ36PVJU9	RZQ42PVJU9
Cooling Capacity (Nominal) (BTU/h)	18,000	24,000	30,000	36,000	42,000
Heating Capacity (Nominal) (BTU/h)	20,000	27,000	34,000	40,000	47,000
SEER / HSPF †	17.5 / 10.6	16.5 / 10.5	16.0 / 9.2	17.5 / 9.1	16.0 / 8.8
EER	14.1	12.0	10.5	11.2	10.2
Power Supply (Voltage-Phase-Hz)	208/230V-1-60	208/230V-1-60	208/230V-1-60	208/230V-1-60	208/230V-1-60
External Static Pressure ("W.G)	Standard 0.40 (0.80 - 0.20)				
Liquid Piping Connections O.D.) (in.)	∅ 1/4	∅ 3/8	∅ 3/8	∅ 3/8	∅ 3/8
Gas Piping Connections (O.D.) (in.)	∅ 1/2	∅ 5/8	∅ 5/8	∅ 5/8	∅ 5/8
Condensate Drain (in.)	∅ 1-1/4	∅ 1-1/4	∅ 1-1/4	∅ 1-1/4	∅ 1-1/4
Max. Piping Length (ft.)	164	164	164	230	230
Max. Piping Height (ft.)	98	98	98	164	164

† Applicable to heat pump models only

DUCTLESS SYSTEMS

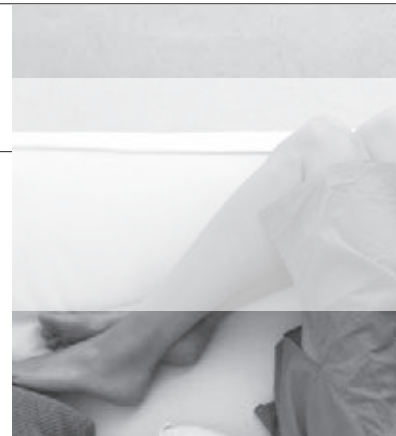
### COMFORTABLE LIMITED WARRANTY\* PROTECTION



\*Complete warranty details available from your local dealer or at [www.daikincomfort.com](http://www.daikincomfort.com).



- External static pressure up to 0.8" W.G.
- Three user-selected fan speeds available, plus fan "Auto" logic
- Built-in condensate pump
- Bottom access for easy service





# SKYAIR | INDOOR UNITS

## FCQ ROUND-FLOW CASSETTE

FCQ PERFORMANCE	1.5 TONS	2.0 TONS	2.5 TONS	3.0 TONS	3.5 TONS
Indoor Model#	FCQ18PAVJU	FCQ24PAVJU	FCQ30PAVJU	FCQ36PAVJU	FCQ42PAVJU
Outdoor Model # Cooling Only	RZR18PVJU	RZR24PVJU	RZR30PVJU	RZR36PVJU	RZR42PVJU
Outdoor Model # Heat Pump	RZQ18PVJU9	RZQ24PVJU9	RZQ30PVJU	RZQ36PVJU9	RZQ42PVJU9
Cooling Capacity (Rated) (BTU/h)	18,000	24,000	30,000	36,000	42,000
Heating Capacity (Rated) <sup>†</sup> (BTU/h)	20,000	27,000	34,000	40,000	47,000
SEER / HSPF <sup>†</sup>	17.2 / 10.1	16.8 / 9.7	15.8 / 9.7	17.5 / 8.4	16.0 / 8.5
EER	13.9	12.0	10.2	11.2	10.2
Power Supply (Voltage-Phase-Hz)	208/230V-1-60	208/230V-1-60	208/230V-1-60	208/230V-1-60	208/230V-1-60
Liquid Piping Connections (O.D.) (in.)	Ø 1/4	Ø 3/8	Ø 3/8	Ø 3/8	Ø 3/8
Gas Piping Connections (O.D.) (in.)	Ø 1/2	Ø 5/8	Ø 5/8	Ø 5/8	Ø 5/8
Condensate Drain (in.)	Ø 1-1/4	Ø 1-1/4	Ø 1-1/4	Ø 1-1/4	Ø 1-1/4
Max. Piping Length (ft.)	164	164	164	230	230
Max. Piping Height (ft.)	98	98	98	164	164

<sup>†</sup> Applicable to heat pump models only

DUCTLESS SYSTEMS



\*Complete warranty details available from your local dealer or at [www.daikincomfort.com](http://www.daikincomfort.com).

COMFORTABLE LIMITED WARRANTY\* PROTECTION

- 23 configurable airflow patterns for ideal airflow distribution
- 360° airflow reduces draft
- Stain-resistant decorative panel allows for easy cleaning



# SKYAIR | INDOOR UNITS

## FHQ CEILING SUSPENDED

FHQ PERFORMANCE	1.5 TONS	2.0 TONS	2.5. TONS	3.0 TONS	3.5 TONS
Indoor Model#	FHQ18PVJU	FHQ24PVJU	FHQ30PVJU	FHQ36MVJU	FHQ42MVJU
Outdoor Model # Cooling Only	RZR18PVJU	RZR24PVJU	RZR30PVJU	RZR36PVJU	RZR42PVJU
Outdoor Model # Heat Pump	RZQ18PVJU9	RZQ24PVJU9	RZQ30PVJU	RZQ36PVJU9	RZQ42PVJU9
Cooling Capacity (Rated) (BTU/h)	18,000	24,000	30,000	36,000	40,500
Heating Capacity (Rated) <sup>†</sup> (BTU/h)	20,000	27,000	34,000	37,500	39,500
SEER / HSPF <sup>†</sup>	18.0 / 11.1	18.1 / 11.1	18.1 / 10.0	17.2 / 8.4	13.8 / 8.2
EER	14.0	12.6	10.5	10.2	9.5
Power Supply (Voltage-Phase-Hz)	208/230V-1-60	208/230V-1-60	208/230V-1-60	208/230V-1-60	208/230V-1-60
Liquid Piping Connections (O.D.) (in.)	Ø 3/8	Ø 3/8	Ø 3/8	Ø 3/8	Ø 3/8
Gas Piping Connections (O.D.) (in.)	Ø 5/8	Ø 5/8	Ø 5/8	Ø 5/8	Ø 5/8
Condensate Drain (in.)	Ø 1	Ø 1	Ø 1	Ø 1	Ø 1
Max. Piping Length (ft.)	164	164	164	230	230
Max. Piping Height (ft.)	98	98	98	164	164

<sup>†</sup> Applicable to heat pump models only

DUCTLESS SYSTEMS

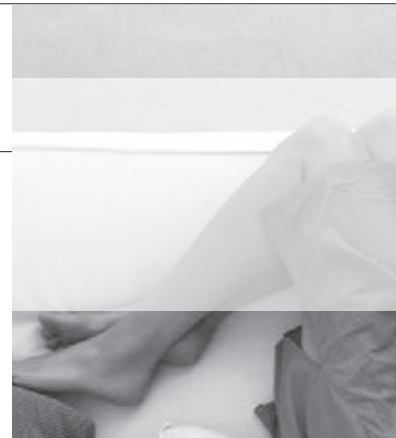
### COMFORTABLE LIMITED WARRANTY\* PROTECTION



\*Complete warranty details available from your local dealer or at [www.daikincomfort.com](http://www.daikincomfort.com).



- Auto-swing capability with 100° airflow pattern
- Lateral servicing space allows installation in corners, narrow spaces, walls and ceilings
- Innovative stream fan technology



# SKYAIR | INDOOR UNITS

## FTQ AIR HANDLER

Nominal Tons	1.5 TONS	2.0 TONS	2.5. TONS	3.0 TONS	3.5 TONS
Indoor Model#	FTQ18PBVJU	FTQ24PBVJU	FTQ30PBVJU	FTQ36PBVJU	FTQ42PBVJU
Outdoor Model#	RZQ18PVJU9	RZQ24PVJU9	RZQ30PVJU9	RZQ36PVJU9	RZQ42PVJU9
Cooling Capacity (Rated) (BTU/h)	18,000	24,000	30,000	36,000	40,000
Cooling Capacity (Min–Max) (BTU/h)	9,000 – 18,000	9,000 – 24,000	12,000 – 30,000	12,000 – 36,000	12,000 – 42,000
Heating Capacity (Rated) <sup>†</sup> (BTU/h)	20,000	27,000	34,000	40,000	47,000
Heating Capacity (Min–Max) <sup>†</sup> (BTU/h)	9,000 – 20,000	9,000 – 27,000	12,000 – 34,000	12,000 – 40,000	12,000 – 47,000
SEER / HSPF <sup>†</sup>	20.0 / 12.0	19.0 / 11.5	19.5 / 10.0	18.0 / 9.5	17.0 / 9.0
COP / EER	4.0 / 14.5	3.8 / 13.5	3.7 / 19.5	3.6 / 12.5	3.2 / 12.0
Power Supply (Voltage-Phase-Hz)	208/230V-1-60	208/230V-1-60	208/230V-1-60	208/230V-1-60	208/230V-1-60
External Static Pressure ("W.G.)	Up to 0.50				
Liquid Piping Connections (O.D.) (in.)	∅ 3/8	∅ 3/8	∅ 3/8	∅ 3/8	∅ 3/8
Gas Piping Connections (O.D.) (in.)	∅ 5/8	∅ 5/8	∅ 5/8	∅ 5/8	∅ 5/8
Condensate Drain (in.)	∅ 1	∅ 1	∅ 1	∅ 1	∅ 1
Max. Piping Length (ft.)	98.0	98.0		230.0	
Max. Piping Height (ft.)	98.0	98.0		164.0	

<sup>†</sup> Applicable to heat pump models only

DUCTLESS SYSTEMS



\*Complete warranty details available from your local dealer or at [www.daikincomfort.com](http://www.daikincomfort.com).

COMFORTABLE LIMITED WARRANTY\* PROTECTION

- Low ambient heat operation down to -4°F
- Upflow or horizontal right configurations
- Field-installed electric heat options available from 3kW to 15 kW



# ACCESSORIES

## DUCTLESS SYSTEMS

DUCTLESS SYSTEMS

ITEM #	ITEM DESCRIPTION
<b>CONTROLLER OPTIONS</b>	
BRC7E830	Wireless Remote Control Kit
BRC944B2-A08	Wired Remote Controller - Kit Reference - see next 3 items
BRC944B2	Wired Controller - Part 1 of BRC944B2-A08 Kit
BRCW901A08	Wired Controller Cord - Part 2 of BRC944B2-A08 Kit
KRP980B1	Interface Adaptor for BRC944B2-A08 Kit - Part 3 (Required for the 09.12 KEVJU)
DACA- BRCW901P10	Remote Controller Cable, Plenum Rated, 10ft
DACA- BRCW901P25	Remote Controller Cable, Plenum Rated, 25ft
DACA-TS1-1	Daikin ENVi Intelligent Thermostat Kit
<b>FILTER REPLACEMENTS</b>	
KAF918A44	Air purifying filter with photocatalytic deodorizing filter without frame
KAF952B42	Air purifying filter with photocatalytic deodorizing filter without frame
KAF974B42S	Titanium Apatite Photocatalytic Air Purifying Filter Set
<b>MINI-SPLIT PADS - PLASTIC PAD</b>	
EL1838-3	Elite Plastic Pad 18x38x3
EL2436-3	Elite Plastic Pad 24x36x3
<b>MINI-SPLIT PADS - ULTRALITE - CONCRETE BASED PAD</b>	
UC1636-2	Ultralite Pad 16x36x2
UC2436-2	Ultralite Pad 24x36x2
UC2436-3	Ultralite Pad 16x36x3
UC2436-3	Ultralite Pad 24x36x3
<b>MINI-SPLIT PADS - FLORIDA MARKET</b>	
UC1636-2	N FL Hurricane Pad 18x40x4 - 150MPH Zone
UC2436-2	N FL Hurricane Pad 24x36x4 - 150MPH Zone
UC2436-3	S FL Hurricane Pad 18x40x4 - 175MPH Zone
UC2436-3	S FL Hurricane Pad 24x36x4 - 175MPH Zone
<b>INSTALLATION TOOLS</b>	
DACA-FSG-1	Flare Size Gauge
DACA-RBTC-1	Replacement Tubing Cutter Blade
TLTWSM	Torque Wrench Kit w/Lever -METRIC- Replaces All DACA-TQW SERIES INDIV TORQUE WRENCHES
TLTWSAE	Torque Wrench Kit w/Lever - SAE
TLB410AD	Daikin Custom Tool Kit - 22Pcs + Tool Bag
MT2H7P5	R410a Gauges w/ball vlv - Replaces - DACA-R410GS-1
FT800FN	Flaring Tool - Clutch Type Eccentric - Replaces - DACA-CFK-1
TLDB	Deburring Tool - Replaces - DACA-DT-1
TCT274	HD Tubing Cutter - 1/8 to 1-3/8 - Replaces DACA-TC-1
AD87	Straight Adapter 5/16 flare to a 1/4 flare - Replaces - DACA-SVA-1
AD87S	Angled Adapter 55deg 5/16 flare to 1/4 flare - Replaces - DACA-SVA-1
TLVCS410	Valve Core Remover / Installer Tool w/Side Port
LSFNUT14	Lineset 45Deg Flare Nut - 1/4 - Pkg 10
LSFNUT38	Lineset 45Deg Flare Nut - 3/8 - Pkg 10
LSFNUT12	Lineset 45Deg Flare Nut - 1/2 - Pkg 10
LSFNUT58	Lineset 45Deg Flare Nut - 5/8 - Pkg 10

# ACCESSORIES

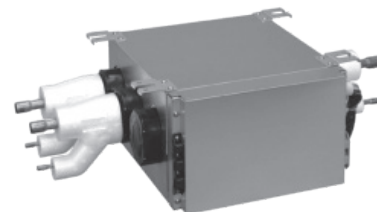
## DUCTLESS SYSTEMS

LINE SETS			
MODEL NUMBER	SIZE (IN.)	LENGTH (FT.)	INSULATION (IN.)
LS14381210DMSF	1/4 x 3/8	10	1/2
LS14381215DMSF	1/4 x 3/8	15	1/2
LS14381230DMSF	1/4 x 3/8	30	1/2
LS14381250DMSF	1/4 x 3/8	50	1/2
LS14381265DMSF	1/4 x 3/8	65	1/2
LS143812100DMSF	1/4 x 3/8	100	1/2
LS14121210DMSF	1/4 x 1/2	10	1/2
LS14121215DMSF	1/4 x 1/2	15	1/2
LS14121230DMSF	1/4 x 1/2	30	1/2
LS14121250DMSF	1/4 x 1/2	50	1/2
LS14121265DMSF	1/4 x 1/2	65	1/2
LS141212100DMSF	1/4 x 1/2	100	1/2
LS14581210DMSF	1/4 x 5/8	10	1/2
LS14581215DMSF	1/4 x 5/8	15	1/2
LS14581230DMSF	1/4 x 5/8	30	1/2
LS14581250DMSF	1/4 x 5/8	50	1/2
LS14581265DMSF	1/4 x 5/8	65	1/2
LS145812100DMSF	1/4 x 5/8	100	1/2



DUCTLESS SYSTEMS

BRANCH PORT UNITS COMPATIBILITY TABLE				
COMPATIBILITY	2MXS18	3MXS24	4MXS32	RMXS48
CTXS09HVJU	X	X	X	X
CTXS12HVJU	X	X	X	X
FTXS15LVJU		X	X	X
FTXS18LVJU		X	X	X
FTXS24LVJU		X	X	X
FDXS09LVJU				X
FDXS12LVJU	X	X	X	X
CDXS15LVJU		X	X	X
CDXS18LVJU		X	X	X
CDXS24LVJU		X	X	X
FFQ09LVJU				X
FFQ12LVJU	X	X	X	X
FFQ15LVJU		X	X	X
FFQ18LVJU		X	X	X



RMXS48LVJU requires at least one branch port unit. Two sizes available, 2-port and 3-port. Refer to installation manual for full refrigerant piping lengths and requirements.





