

# PRODUCT INFORMATION PACKET



Model No: FM1056

Catalog No: FM1056

1/2 HP Fan Coil / Room Air Conditioner Motor, 1075 RPM, 3 Speed, 208-230 Volts, 48 Frame, OAO  
Fan Coil / Room Air Conditioner Motors



Regal and Century are trademarks of Regal Beloit Corporation or one of its affiliated companies.  
©2020 Regal Beloit Corporation, All Rights Reserved. MC017097E

The REGAL logo is a grey rectangular box with the word 'REGAL' in white, slanted capital letters. It is positioned on a blue and black halftone background that tapers to the right.

REGAL



**Nameplate Specifications**

Output HP	1/2 Hp	Output KW	0.37 kW
Frequency	60 Hz	Voltage	208-230 V
Current	3.3 A	Speed	1075 rpm
Service Factor	1	Phase	1
Duty	Air Over	Insulation Class	B
Frame	48Y	Enclosure	Open Enclosed
Thermal Protection	Automatic	Ambient Temperature	50 °C
UL	Recognized	CSA	Y
CE	N		

**Technical Specifications**

Electrical Type	Permanent Split Capacitor	Starting Method	Across The Line
Poles	6	Rotation	Reversible
Mounting	Flexible Arms	Motor Orientation	Horizontal
Drive End Bearing	Sleeve	Opp Drive End Bearing	Sleeve
Frame Material	Rolled Steel	Shaft Type	Flat
Overall Length	10.86 in	Frame Length	4.25 in
Shaft Diameter	0.500 in	Shaft Extension	6 in
Connection Drawing	614131-111	Outline Drawing	FM1056-S01

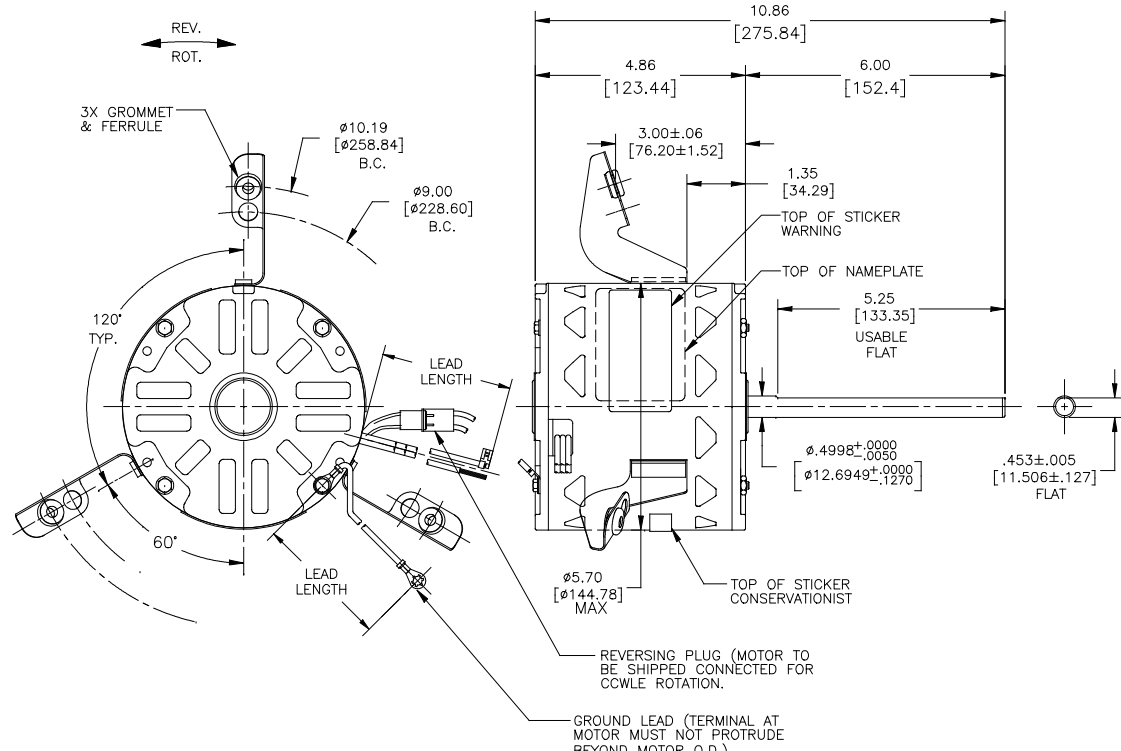
This is an uncontrolled document once printed or downloaded and is subject to change without notice. Date Created:06/11/2020

**GENERAL INFORMATION:**

SHAFT RUNOUT: .001 [.025] T.I.R. PER INCH LENGTH OF EXTENSION  
 END PLAY: .010[.254] TO .063[1.600]  
 BEARINGS: SLEEVE  
 MOUNTING POSITION: HORIZONTAL

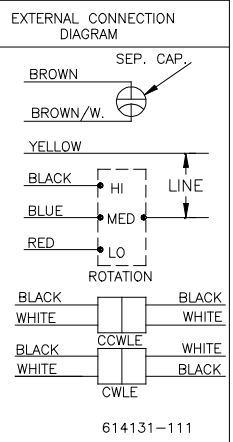
**ELECTRICAL DATA:**

OVERLOAD PROTECTOR: AUTOMATIC RESET (T.I. 7AM 036)  
 LEADS: NO. 18 GA., .03 [.76] THK., 125°C XLP INSUL.  
 GROUND LEAD: NO. 18 GA., .03 [.76] THK., (GREEN) INSUL.



**NAMEPLATE DATA:**

MODEL NO.: F48N85A01  
 CUST. P/N: FM1056  
 HP: 1/2  
 ROT.: REVERSIBLE  
 RPM: 1075/3 SPD  
 TYPE: UF  
 FRAME: 48Y  
 VOLTS: 208-230  
 PH: 1  
 AMPS: 3.3  
 HZ: 60  
 INS.: B  
 AMB.: 50°C  
 DUTY: AIR OVER  
 CAP.: 10 MFD/370V  
 ENCL: OPEN  
 UL LOGO  
 CSA LOGO  
 THERMALLY PROTECTED



**LEAD DATA**

COLOR	LENGTH	TERMINAL OR STRIP LENGTH
RED	26/28 [600/711]	.50 [12.70] SKIN
BLUE	26/28 [600/711]	.50 [12.70] SKIN
BLACK	26/28 [600/711]	.50 [12.70] SKIN
YELLOW	26/28 [600/711]	.50 [12.70] SKIN
BROWN	26/28 [600/711]	.25 [6.35] FLAG
BROWN/WHITE	26/28 [600/711]	.25 [6.35] FLAG
BLACK/WHITE	3/5 [76/127]	REVEPSING PLUG
GREEN(GRD)	12/13 [305/330]	#10 EYELET

REGAL-BELOIT CORPORATION (RBC) PROVIDES TECHNICAL ASSISTANCE TO OUR CUSTOMERS IN SEVERAL AREAS. SINCE RBC DOES NOT RECEIVE ALL DATA CONCERNING THE USE AND APPLICATION OF THE MOTOR, THE SUITABILITY OF THE MOTOR FOR THE APPLICATION MUST BE DETERMINED BY THE CUSTOMER.

DIMENSIONS WITHOUT TOLERANCES ARE FOR REFERENCE ONLY.

**ENCLOSURE**

END FRAME - LE	OPEN
MAIN FRAME - LE	OPEN
END FRAME - OLE	OPEN
MAIN FRAME - OLE	OPEN

CUSTOMER	DISTRIBUTION SERVICE
----------	----------------------

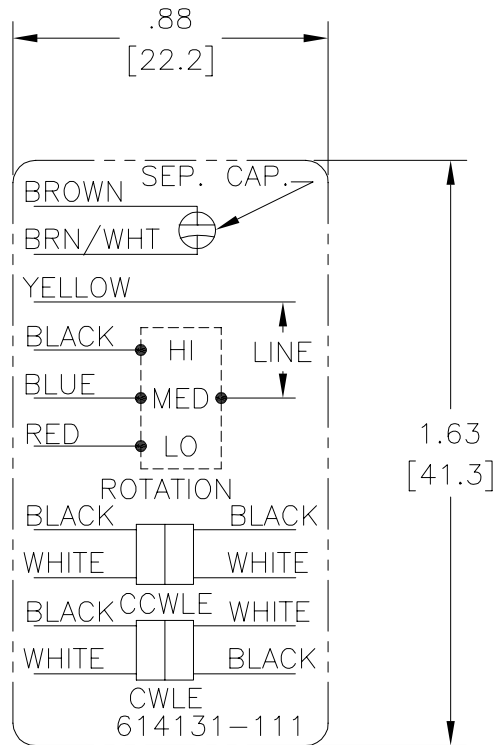
PERFORMANCE CURVE NO.	TORQUE @ 1075 RPM (25°C)	APPROVED SAMPLE	UL COMPONENT	CSA
FILE #	CCN #	FILE #	CLASS #	
C31883	51.3 OZ. FT.	99AC395A	E46412 PRGY2	LR43341 260-Ø-0

DRAWING REVISION BY: B	REVISION BY: JASMIN ZHU	DATE: 08-10-2017
ECC-0128689	APPROVED BY: DEXIAN LI	DATE: 08-10-2017
ECO DESCRIPTION: ONLY UPDATE THE DRAWING		
COPYRIGHT REGAL-BELOIT AMERICA, INC. ALL RIGHTS RESERVED. PROPRIETARY AND CONFIDENTIAL INFORMATION - THIS DOCUMENT IS THE PROPERTY OF REGAL-BELOIT AMERICA, INC. (OWNER) AND CONTAINS OWNER'S PROPRIETARY INFORMATION. ANY REPRODUCTION OR OTHER FIRM REPRODUCTION IF IS DEMAND, BY RECEIVING IT, TO AGREE THAT IT, AND/OR ANY PART OF IT, SHALL NOT BE DISCLOSED TO ANY PERSON, CORPORATION OR OTHER ENTITY, SUPPLIER, AND/OR USER WITHOUT AS EXPRESSLY APPROVED IN WRITING IN ADVANCE BY OWNER. THIS DOCUMENT SHALL BE RETURNED TO OWNER UPON REQUEST. IT MAY BE SUBJECT TO CERTAIN RESTRICTIONS UNDER APPLICABLE EXPORT CONTROL LAWS AND REGULATIONS.		

DRAWN BY: J. RUPERT	Regal Beloit America, Inc.
DATE: 03-27-1995	DESCRIPTION: MODEL-RFHP-48FR OUTLINE
APPROVED BY: T. RILEY	MATERIAL: -
DATE: 04-20-1995	SIZE: C
PROCESS/FINISH: -	DWG NO: FM1056
THIRD ANGLE PROJECTION	SHEET: 1

# Uncontrolled Copy

REV	ECO	REV BY	DATE	APPD	DATE
B	ECO-0014509	jrupert	05-25-2010	triley	05-25-2010



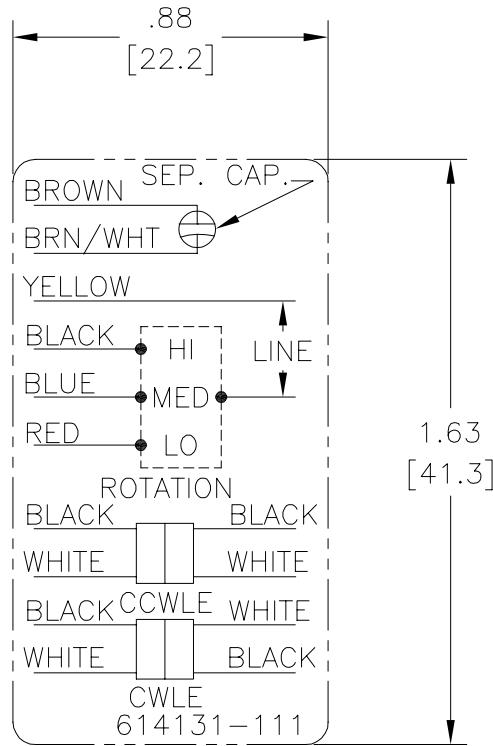
**NOTES:**

1. FOR USE WITH 614129 NAMEPLATE BLANK
2. — — — — — INDICATES DIMENSION LIMITS
3. DIE TO BE MADE FROM MASTER SUPPLIED BY A. O. SMITH CORPORATION
4. DIE MUST PRODUCE A LEGIBLE IMPRESSION.

<b>GEOMETRIC CHARACTERISTICS &amp; SYMBOLS</b> ▽ FLATNESS — STRAIGHTNESS ∠ ANGULARITY ⊥ PERPENDICULARITY (SQUARENESS) ∥ PARALLELISM ○ ROUNDNESS (CIRCULARITY) ⌀ CYLINDRICITY △ PROFILE OF ANY SURFACE ▽ PROFILE OF ANY LINE ↗ RUNOUT ⊕ TRUE POSITION ⊙ CONCENTRICITY = SYMMETRY	UNLESS OTHERWISE SPECIFIED DIM. TOLERANCES ARE AS FOLLOWS: INCH X XX XXX XXXX ±.1 ±.02 ±.005 ±.0005 mm ±0.5 ±0.13 ±0.013 ANG. ±.50 DEG REMOVE BURRS & BREAK SHARP EDGES: INCH .003-.015 mm 0.1-0.4 CORNER FILLETS TO: INCH .020 mm 0.5 MACHINE SURFACES: INCH 125 mm 3.2 METRIC DIMS. SHOWN IN [BRACKETS]	DR BY: jrupert APPD: triley DATE: 05-25-2010 DATE: 05-25-2010 EDS DATE 02-22-2008 FORMAT REV F THIRD ANGLE PROJECTION	<b>ELECTRICAL PRODUCTS COMPANY</b> A DIVISION OF A. O. SMITH CORPORATION DESCRIPTION: <b>CONN DIAGRAM EXTERNAL</b> SIZE: A DWG NO: 614131-111 SCALE: NONE SHEET: 1
CONFIDENTIAL: THIS DRAWING AND ITS INFORMATION ARE THE EXCLUSIVE AND CONFIDENTIAL PROPERTY OF A.O. SMITH CORP. AND ARE NOT TO BE DISCLOSED, DUPLICATED, DISTRIBUTED OR OTHERWISE USED WITHOUT THE WRITTEN CONSENT OF A.O. SMITH CORP. -ALL RIGHTS RESERVED. ASME Y14.5M 1994			

# Uncontrolled Copy

REVISION:	ECO	REVISADO POR:	FECHA:	APROBADO POR:	FECHA:
B	ECO-0014509	jrupert	05-25-2010	triley	05-25-2010



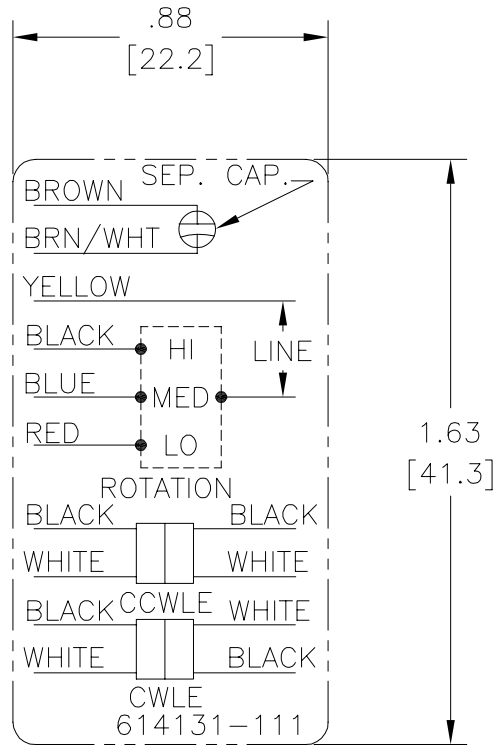
**NOTES:**

1. FOR USE WITH 614129 NAMEPLATE BLANK
2. — — — — — INDICATES DIMENSION LIMITS
3. DIE TO BE MADE FROM MASTER SUPPLIED BY A. O. SMITH CORPORATION
4. DIE MUST PRODUCE A LEGIBLE IMPRESSION.

CARACTERISTICAS DE GEOMETRIA Y SIMBOLOS Z PLANICIDAD — RECTITUD < ANGULARIDAD ⊥ PERPENDICULARIDAD (A ESCUADRA) // PARALELISMO ○ REDONDEZ (CIRCULARIDAD) ∅ CILINDRICIDAD △ PERFIL DE CUALQUIER SUPERFICIE ∩ PERFIL DE CUALQUIER LINEA / VARIACION ⊕ POSICION REAL ⊙ CONCENTRICIDAD = SIMETRIA	A MENOS QUE SE ESPECIFIQUE DE OTRA MANERA, LAS TOLERANCIAS DE LAS DIMS. SON LAS SIGUIENTES: PULG ±.1 ±.02 ±.005 ±.0005 mm ±0.5 ±0.13 ±0.013 ANG. ±.50 GRADOS ELIMINAR REBABAS Y ORILLAS FILOSAS DEL BORDE. PULG .003-.015 mm 0.1-0.4 FILETEAR ESQUINA: PULG .020 mm 0.5 MAQUINAR SUPERFICIES PULG 125 mm 3.2 DIMS METRICAS MOSTRADAS [PARENTESIS]	DIBUJADO POR: jrupert 05-25-2010 APROBADO POR: triley 05-25-2010	FECHA EDS: 02-22-2008 REV. FORMATO: F	<b>ELECTRICAL PRODUCTS COMPANY</b> <small>A DIVISION OF A. O. SMITH CORPORATION</small>	
	TERCER ANGULO DE PROYECCION				DESCRIPCION: CONN DIAGRAM EXTERNAL
	CONFIDENCIAL: ESTE DIBUJO Y SU INFORMACION SON PROPIEDAD DE USO EXCLUSIVO Y CONFIDENCIAL DE A.O.SMITH CORP. Y NO DEBERAN SER REVELADOS, DUPLICADOS, DISTRIBUIDOS O USARSE DE OTRA MANERA SIN EL CONSENTIMIENTO ESCRITO DE A.O. SMITH CORP. -TODOS LOS DERECHOS RESERVADOS.ASME Y14.5M 1994				TAMAÑO: A NUMERO DE DIBUJO: 614131-111
	ESCALA: NONE				HOJA: 1

# Uncontrolled Copy

版本	ECO	编制	日期	批准	日期
B	ECO-0014509	jrupert	05-25-2010	triley	05-25-2010



**NOTES:**

1. FOR USE WITH 614129 NAMEPLATE BLANK
2. — — — — — INDICATES DIMENSION LIMITS
3. DIE TO BE MADE FROM MASTER SUPPLIED BY A. O. SMITH CORPORATION
4. DIE MUST PRODUCE A LEGIBLE IMPRESSION.

形位公差 ▽ 平面度 — 直线度 ∠ 倾斜度 ⊥ 垂直度 ∥ 平行度 ○ 圆度 ⊙ 圆柱度 面轮廓度 线轮廓度 圆跳动 位置度 同轴度 ≡ 对称度	除另有注明 尺寸公差如下： 英寸 X XX XXX XXXX 毫米 ±.1 ±.02 ±.005 ±.0005 毫米 ±0.5 ±0.13 ±0.013 角度 ±.50 度 清理毛刺和尖棱 英寸 .003-.015 毫米 0.1-0.4 内圆角 英寸 .020 毫米 0.5 表面粗糙度 英制 125 米制 3.2 米制尺寸显示在 [ ]	绘图: jrupert 批准: triley 第三角投影	05-25-2010 05-25-2010 图纸格式发布日期 02-22-2008 图纸格式版本 F	<b>ELECTRICAL PRODUCTS COMPANY</b> <small>A DIVISION OF A. O. SMITH CORPORATION</small> 名称 <h2 style="margin: 0;">CONN DIAGRAM EXTERNAL</h2>	
	机密：本图纸及相关信息所有权归A. O. SMITH公司所有。未经A. O. SMITH公司书面授权，不得泄露、复制、传播或作其他用途。--版权所有 ASME Y14.5M 1994				图幅 A 图号 614131-111
					比例 NONE 页号 1