

PRODUCT INFORMATION PACKET



Model No: FE6001F
Catalog No: FE6001F
1/3-1/5 HP Condenser Fan Motor, 825 RPM, 2 Speed, 208-230 Volts, 48 Frame, TEAO
Condenser Fans Motors



Regal and Century are trademarks of Regal Beloit Corporation or one of its affiliated companies.
©2020 Regal Beloit Corporation, All Rights Reserved. MC017097E





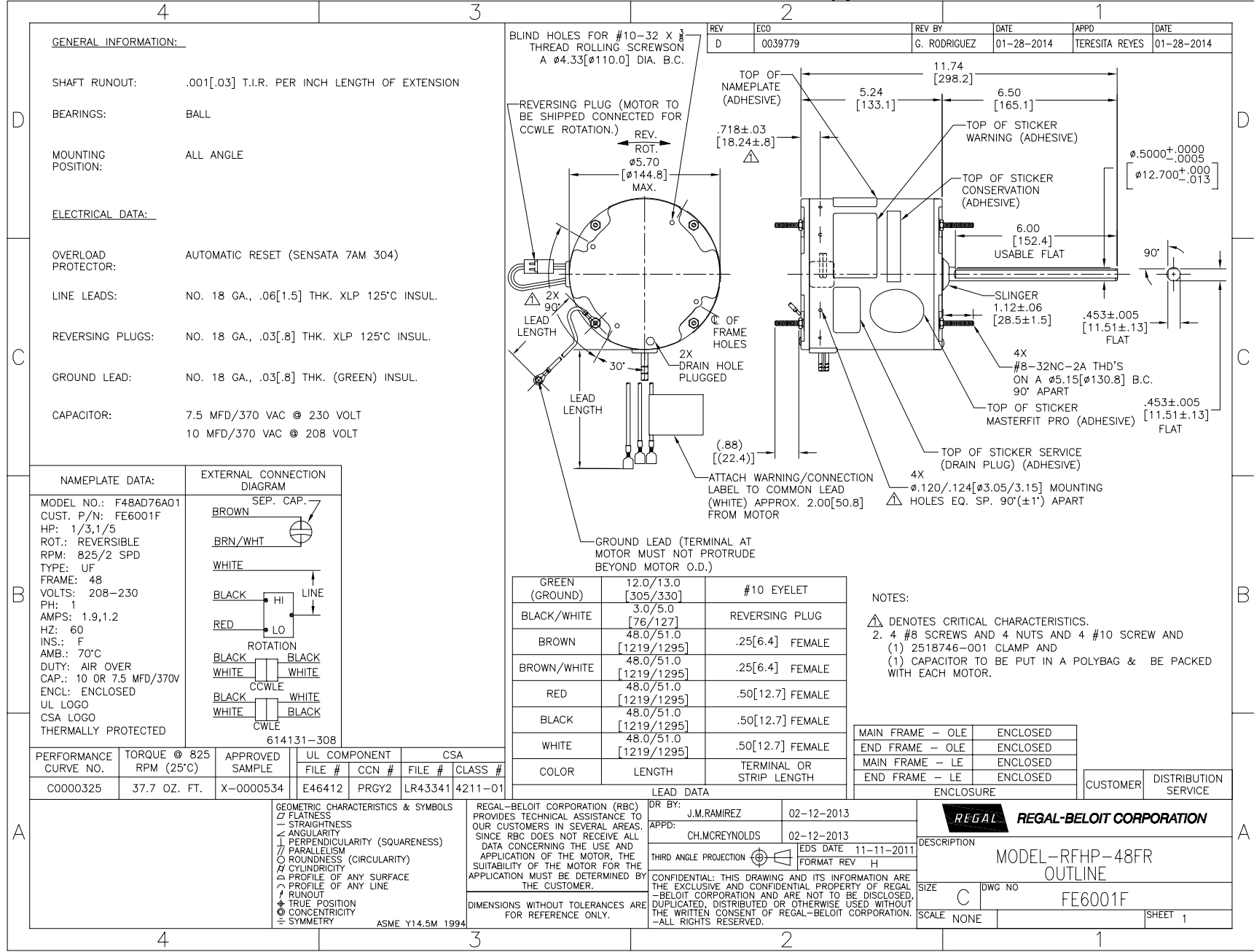
Nameplate Specifications

| | | | |
|--------------------|-------------|---------------------|------------------|
| Output HP | 1/3, 1/5 Hp | Output KW | 0.25 kW |
| Frequency | 60 Hz | Voltage | 208-230 V |
| Current | 1.9,1.2 A | Speed | 825 rpm |
| Service Factor | 1 | Phase | 1 |
| Duty | Air Over | Insulation Class | F |
| Frame | 48 | Enclosure | Totally Enclosed |
| Thermal Protection | Automatic | Ambient Temperature | 70 °C |
| UL | Recognized | CSA | Y |
| CE | N | | |

Technical Specifications

| | | | |
|-------------------|---------------------------|-----------------------|-----------------|
| Electrical Type | Permanent Split Capacitor | Starting Method | Across The Line |
| Poles | 8 | Rotation | Reversible |
| Mounting | Extended Studs | Motor Orientation | Any |
| Drive End Bearing | Ball | Opp Drive End Bearing | Ball |
| Frame Material | Rolled Steel | Shaft Type | Double Flat |
| Overall Length | 12.12 in | Frame Length | 4.63 in |
| Shaft Diameter | 0.500 in | Shaft Extension | 6.5 in |
| Outline Drawing | FE6001F-S01 | Connection Drawing | 614131-308 |

This is an uncontrolled document once printed or downloaded and is subject to change without notice. Date Created:10/09/2020



GENERAL INFORMATION:

SHAFT RUNOUT: .001[.03] T.I.R. PER INCH LENGTH OF EXTENSION

BEARINGS: BALL

MOUNTING POSITION: ALL ANGLE

ELECTRICAL DATA:

OVERLOAD PROTECTOR: AUTOMATIC RESET (SENSATA 7AM 304)

LINE LEADS: NO. 18 GA., .06[1.5] THK. XLP 125°C INSUL.

REVERSING PLUGS: NO. 18 GA., .03[.8] THK. XLP 125°C INSUL.

GROUND LEAD: NO. 18 GA., .03[.8] THK. (GREEN) INSUL.

CAPACITOR: 7.5 MFD/370 VAC @ 230 VOLT
10 MFD/370 VAC @ 208 VOLT

BLIND HOLES FOR #10-32 X 3/8
THREAD ROLLING SCREWS ON
A Ø4.33[Ø110.0] DIA. B.C.

| REV | ECO | REV BY | DATE | APPD | DATE |
|-----|---------|--------------|------------|----------------|------------|
| D | 0039779 | G. RODRIGUEZ | 01-28-2014 | TERESITA REYES | 01-28-2014 |

| NAMEPLATE DATA: | EXTERNAL CONNECTION DIAGRAM |
|--|--|
| MODEL NO.: F48AD76A01 CUST. P/N: FE6001F HP: 1/3,1/5 ROT.: REVERSIBLE RPM: 825/2 SPD TYPE: UF FRAME: 48 VOLTS: 208-230 PH: 1 AMPS: 1.9,1.2 HZ: 60 INS.: F AMB.: 70°C DUTY: AIR OVER CAP.: 10 OR 7.5 MFD/370V ENCL: ENCLOSED UL LOGO CSA LOGO THERMALLY PROTECTED | <p>SEP. CAP. →</p> <p>BROWN</p> <p>BRN/WHT</p> <p>WHITE</p> <p>BLACK → HI</p> <p>RED → LO</p> <p>ROTATION</p> <p>BLACK → BLACK</p> <p>WHITE → WHITE</p> <p>CCWLE</p> <p>BLACK → WHITE</p> <p>WHITE → BLACK</p> <p>CWLE</p> <p>614131-308</p> |

| COLOR | LENGTH | TERMINAL OR STRIP LENGTH |
|----------------|--------------------------|--------------------------|
| GREEN (GROUND) | 12.0/13.0 [305/330] | #10 EYELET |
| BLACK/WHITE | 3.0/5.0 [76/127] | REVERSING PLUG |
| BROWN | 48.0/51.0 [1219/1295] | .25[6.4] FEMALE |
| BROWN/WHITE | 48.0/51.0 [1219/1295] | .25[6.4] FEMALE |
| RED | 48.0/51.0 [1219/1295] | .50[12.7] FEMALE |
| BLACK | 48.0/51.0 [1219/1295] | .50[12.7] FEMALE |
| WHITE | 48.0/51.0 [1219/1295] | .50[12.7] FEMALE |
| COLOR | LENGTH | TERMINAL OR STRIP LENGTH |

NOTES:

△ DENOTES CRITICAL CHARACTERISTICS.

2. 4 #8 SCREWS AND 4 NUTS AND 4 #10 SCREW AND (1) 2518746-001 CLAMP AND (1) CAPACITOR TO BE PUT IN A POLYBAG & BE PACKED WITH EACH MOTOR.

| | |
|------------------|----------|
| MAIN FRAME - OLE | ENCLOSED |
| END FRAME - OLE | ENCLOSED |
| MAIN FRAME - LE | ENCLOSED |
| END FRAME - LE | ENCLOSED |

| PERFORMANCE CURVE NO. | TORQUE @ 825 RPM (25°C) | APPROVED SAMPLE | UL COMPONENT | CSA |
|-----------------------|-------------------------|-----------------|--------------|-----------------|
| FILE # | CCN # | FILE # | CLASS # | |
| C0000325 | 37.7 OZ. FT. | X-0000534 | E46412 PRGY2 | LR43341 4211-01 |

GEOMETRIC CHARACTERISTICS & SYMBOLS

- FLATNESS
- STRAIGHTNESS
- ∠ ANGULARITY
- ⊥ PERPENDICULARITY (SQUARENESS)
- ∥ PARALLELISM
- ROUNDNESS (CIRCULARITY)
- ∅ CYLINDRICITY
- ~ PROFILE OF ANY SURFACE
- ~ PROFILE OF ANY LINE
- ⊕ RUNOUT
- ⊕ TRUE POSITION
- ⊙ CONCENTRICITY
- ≡ SYMMETRY

ASME Y14.5M 1994

REGAL-BELOIT CORPORATION (RBC) PROVIDES TECHNICAL ASSISTANCE TO OUR CUSTOMERS IN SEVERAL AREAS. SINCE RBC DOES NOT RECEIVE ALL DATA CONCERNING THE USE AND APPLICATION OF THE MOTOR, THE SUITABILITY OF THE MOTOR FOR THE APPLICATION MUST BE DETERMINED BY THE CUSTOMER.

DIMENSIONS WITHOUT TOLERANCES ARE FOR REFERENCE ONLY.

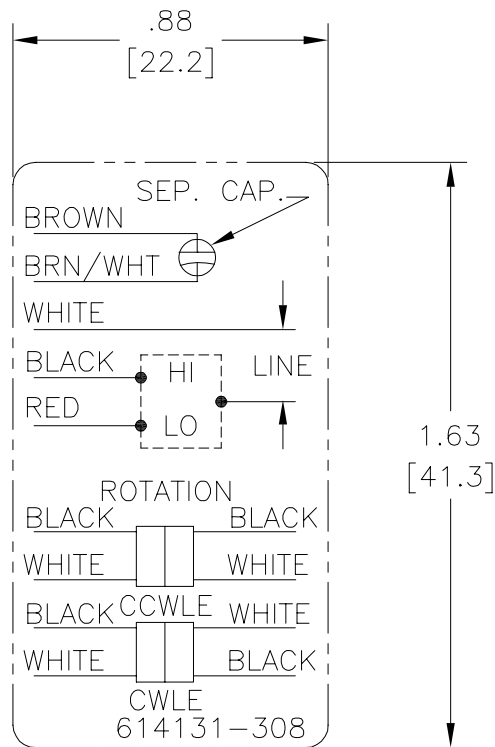
| | | |
|-----------------------|---------------|-------------------------------------|
| DR BY: | J.M.RAMIREZ | 02-12-2013 |
| APPD: | CH.MCREYNOLDS | 02-12-2013 |
| THRD ANGLE PROJECTION | ⊕ | EDS DATE 11-11-2011 FORMAT REV H |

CONFIDENTIAL: THIS DRAWING AND ITS INFORMATION ARE THE EXCLUSIVE AND CONFIDENTIAL PROPERTY OF REGAL-BELOIT CORPORATION AND ARE NOT TO BE DISCLOSED, DUPLICATED, DISTRIBUTED OR OTHERWISE USED WITHOUT THE WRITTEN CONSENT OF REGAL-BELOIT CORPORATION. -ALL RIGHTS RESERVED.

| | |
|---------------------------------------|---------|
| REGAL REGAL-BELOIT CORPORATION | |
| DESCRIPTION | |
| MODEL-RFHP-48FR OUTLINE | |
| SIZE | DWG NO |
| C | FE6001F |
| SCALE | SHEET |
| NONE | 1 |

Uncontrolled Copy

| | | | | | |
|-----|-------------|---------|------------|---------|------------|
| REV | ECO | REV BY | DATE | APPD | DATE |
| B | ECO-0021670 | jrupert | 07-22-2011 | jrupert | 07-22-2011 |



NOTES:

1. FOR USE WITH 614129 NAMEPLATE BLANK
2. — — — — — INDICATES DIMENSION LIMITS
3. DIE TO BE MADE FROM MASTER SUPPLIED BY A. O. SMITH CORPORATION
4. DIE MUST PRODUCE A LEGIBLE IMPRESSION.

GEOMETRIC CHARACTERISTICS & SYMBOLS

- ▭ FLATNESS
- STRAIGHTNESS
- ∠ ANGULARITY
- ⊥ PERPENDICULARITY (SQUARENESS)
- ∥ PARALLELISM
- ROUNDNESS (CIRCULARITY)
- ⊘ CYLINDRICITY
- △ PROFILE OF ANY SURFACE
- ▽ PROFILE OF ANY LINE
- ⊕ RUNOUT
- ⊕ TRUE POSITION
- ⊙ CONCENTRICITY
- ⊕ SYMMETRY

UNLESS OTHERWISE SPECIFIED DIM. TOLERANCES ARE AS FOLLOWS:

| | | | | |
|------|------|-------|--------|--------|
| INCH | ±.1 | ±.02 | ±.005 | ±.0005 |
| mm | ±0.5 | ±0.13 | ±0.013 | |

ANG. ±.50 DEG

REMOVE BURRS & BREAK SHARP EDGES:
INCH .003-.015 mm 0.1-0.4

CORNER FILLETS TO:
INCH .020 mm 0.5

MACHINE SURFACES:
INCH 125 mm 3.2

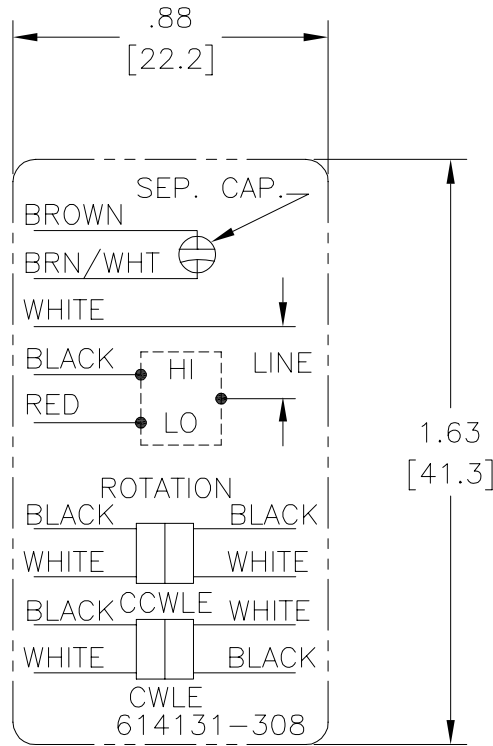
METRIC DIMS. SHOWN IN [BRACKETS]

| | | |
|---|---------|-------------------------------------|
| DR BY: | jrupert | 07-22-2011 |
| APPD: | jrupert | 07-22-2011 |
| THIRD ANGLE PROJECTION | | EDS DATE 02-22-2008 FORMAT REV F |
| <p>CONFIDENTIAL: THIS DRAWING AND ITS INFORMATION ARE THE EXCLUSIVE AND CONFIDENTIAL PROPERTY OF A.O. SMITH CORP. AND ARE NOT TO BE DISCLOSED, DUPLICATED, DISTRIBUTED OR OTHERWISE USED WITHOUT THE WRITTEN CONSENT OF A.O. SMITH CORP.</p> <p style="text-align: right;">-ALL RIGHTS RESERVED. ASME Y14.5M 1994</p> | | |

| | |
|--|---|
| ELECTRICAL PRODUCTS COMPANY <small>A DIVISION OF A. O. SMITH CORPORATION</small> | |
| DESCRIPTION CONN DIAGRAM NAMEPLATE | |
| SIZE | DWG NO 614131-308 |
| SCALE | NONE |
| SHEET 1 | |

Uncontrolled Copy

| | | | | | |
|-----------|-------------|---------------|------------|---------------|------------|
| REVISION: | ECO | REVISADO POR: | FECHA: | APROBADO POR: | FECHA: |
| B | ECO-0021670 | jrupert | 07-22-2011 | jrupert | 07-22-2011 |



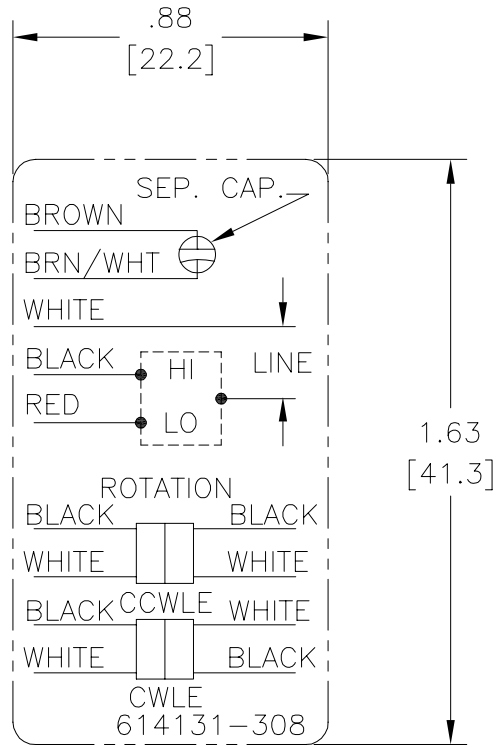
NOTES:

1. FOR USE WITH 614129 NAMEPLATE BLANK
2. — — — — — INDICATES DIMENSION LIMITS
3. DIE TO BE MADE FROM MASTER SUPPLIED BY A. O. SMITH CORPORATION
4. DIE MUST PRODUCE A LEGIBLE IMPRESSION.

| | | | | |
|---|---|---|--|---|
| CARACTERISTICAS DE GEOMETRIA Y SIMBOLOS Z PLANICIDAD — RECTITUD < ANGULARIDAD ⊥ PERPENDICULARIDAD (A ESCUADRA) // PARALELISMO ○ REDONDEZ (CIRCULARIDAD) ∅ CILINDRICIDAD △ PERFIL DE CUALQUIER SUPERFICIE ∩ PERFIL DE CUALQUIER LINEA / VARIACION ⊕ POSICION REAL ⊙ CONCENTRICIDAD = SIMETRIA | A MENOS QUE SE ESPECIFIQUE DE OTRA MANERA, LAS TOLERANCIAS DE LAS DIMS. SON LAS SIGUIENTES: x xx xxx xxxx PULG ±.1 ±.02 ±.005 ±.0005 mm ±0.5 ±0.13 ±0.013 ANG. ±.50 GRADOS ELIMINAR REBABAS Y ORILLAS FILOSAS DEL BORDE. PULG .003-.015 mm 0.1-0.4 FILETEAR ESQUINA: PULG .020 mm 0.5 MAQUINAR SUPERFICIES PULG 125 mm 3.2 DIMS METRICAS MOSTRADAS [PARENTESIS] | DIBUJADO POR: jrupert 07-22-2011 | ELECTRICAL PRODUCTS COMPANY <small>A DIVISION OF A. O. SMITH CORPORATION</small> | DESCRIPCION: CONN DIAGRAM NAMEPLATE |
| | APROBADO POR: jrupert 07-22-2011 | TERCER ANGULO DE PROYECCION FECHA EDS: 02-22-2008 REV. FORMATO: F | | TAMAÑO: A NUMERO DE DIBUJO: 614131-308 |
| | CONFIDENCIAL: ESTE DIBUJO Y SU INFORMACION SON PROPIEDAD DE USO EXCLUSIVO Y CONFIDENCIAL DE A.O.SMITH CORP. Y NO DEBERAN SER REVELADOS, DUPLICADOS, DISTRIBUIDOS O USARSE DE OTRA MANERA SIN EL CONSENTIMIENTO ESCRITO DE A.O. SMITH CORP. -TODOS LOS DERECHOS RESERVADOS.ASME Y14.5M 1994 | ESCALA: NONE | | HOJA: 1 |
| | | | | ESCALA: NONE |

Uncontrolled Copy

| | | | | | |
|----|-------------|---------|------------|---------|------------|
| 版本 | ECO | 编制 | 日期 | 批准 | 日期 |
| B | ECO-0021670 | jrupert | 07-22-2011 | jrupert | 07-22-2011 |



NOTES:

1. FOR USE WITH 614129 NAMEPLATE BLANK
2. — — — — — INDICATES DIMENSION LIMITS
3. DIE TO BE MADE FROM MASTER SUPPLIED BY A. O. SMITH CORPORATION
4. DIE MUST PRODUCE A LEGIBLE IMPRESSION.

| | | | | |
|---|---|-------------------------------------|---|---|
| 形位公差 □ 平面度 — 直线度 ∠ 倾斜度 ⊥ 垂直度 // 平行度 ○ 圆度 ⊙ 圆柱度 面轮廓度 线轮廓度 圆跳动 位置度 同轴度 ≡ 对称度 | 除另有注明 尺寸公差如下: 英寸 X XX XXX XXXX 毫米 ±.1 ±.02 ±.005 ±.0005 毫米 ±0.5 ±0.13 ±0.013 角度 ±.50 度 清理毛刺和尖棱 英寸 .003-.015 毫米 0.1-0.4 内圆角 英寸 .020 毫米 0.5 表面粗糙度 英制 125 米制 3.2 米制尺寸显示在 [] | 绘图: jrupert 批准: jrupert 第三角投影 | 07-22-2011 07-22-2011 图纸格式发布日期 02-22-2008 图纸格式版本 F | <p>ELECTRICAL PRODUCTS COMPANY A DIVISION OF A. O. SMITH CORPORATION</p> |
| | 名称: CONN DIAGRAM NAMEPLATE | | | |
| | 图幅: A | | 图号: 614131-308 | |
| | 比例: NONE | | 页号: 1 | |

ASME Y14.5M 1994