

# PRODUCT INFORMATION PACKET



Model No: FDL1054  
Catalog No: FDL1054  
1/2 HP Fan & Blower Motor, 1625 RPM, 3 Speed, 115 Volts, 48 Frame, OAO  
Direct Drive Motors



Regal and Century are trademarks of Regal Beloit Corporation or one of its affiliated companies.  
©2020 Regal Beloit Corporation, All Rights Reserved. MC017097E

The REGAL logo is a grey, trapezoidal shape with the word 'REGAL' in white, bold, uppercase letters inside. It is positioned on a blue, textured vertical bar that runs down the right side of the page.

REGAL



**Nameplate Specifications**

Output HP	1/2 Hp	Output KW	0.37 kW
Frequency	60 Hz	Voltage	115 V
Current	7.6 A	Speed	1625 rpm
Service Factor	1	Phase	1
Duty	Air Over	Insulation Class	A
Frame	48Y	Enclosure	Open Enclosed
Thermal Protection	Automatic	Ambient Temperature	40 °C
UL	Recognized	CSA	Y
CE	N		

**Technical Specifications**

Electrical Type	Permanent Split Capacitor	Starting Method	Across The Line
Poles	4	Rotation	Reversible
Mounting	Resilient Rings	Motor Orientation	Horizontal
Drive End Bearing	Ball	Opp Drive End Bearing	Ball
Frame Material	Rolled Steel	Shaft Type	Flat
Overall Length	11.55 in	Frame Length	4.50 in
Shaft Diameter	0.500 in	Shaft Extension	6.4 in
Connection Drawing	614131-111	Outline Drawing	FDL1054-S01

This is an uncontrolled document once printed or downloaded and is subject to change without notice. Date Created:06/11/2020

4 3 2 1

GENERAL INFORMATION:

SHAFT RUNOUT: .001 [.025] T.I.R. PER INCH LENGTH OF EXTENSION

BEARINGS: BALL

MOUNTING POSITION: HORIZONTAL

ELECTRICAL DATA:

OVERLOAD PROTECTOR: AUTOMATIC RESET (T.I. 7AM 032)

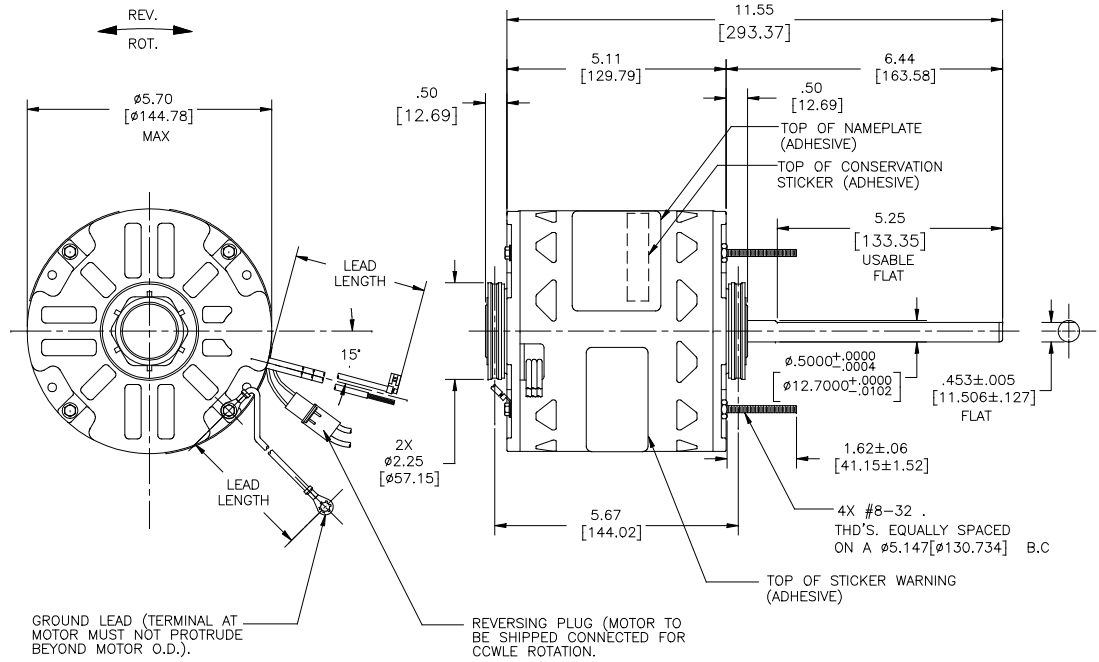
LEADS: NO. 18 GA., .06 [1.52] THK. EPDM 125°C INSUL.

REVERSING PLUGS: NO. 18 GA., .03 [.76] THK. 125°C INSUL.

GROUND LEAD: NO. 18 GA., .03 [.76] THK. (GREEN) INSUL.

NOTE:

- 4X SNAP RINGS 615035 TO BE PACKED WITH EACH MOTOR.
- THE SYMBOL OF CTQ: ▲ (NO CTQ ON THIS DRAWING)
- MEET THE REQUIREMENT OF ROHS AND REACH: SEE EP000014\_5.1



D  
C  
B  
A

D  
C  
B  
A

NAMEPLATE DATA:		EXTERNAL CONNECTION DIAGRAM		
MODEL NO.: F48SN4L6	CUST. P/N: FDL1054			
HP: 1/2	ROT.: REVERSIBLE			
RPM: 1825/3 SPD.	TYPE: UF			
FRAME: 48Y	VOLTS: 115			
PH: 1	AMPS: 7.6 (10.0 MAX)			
HZ: 60	INS.: A			
AMB.: 40°C	DUTY: AIR OVER			
CAP.: 15 MFD/370V	ENCL: OPEN			
UL LOGO	CSA LOGO			
THERMALLY PROTECTED				
614131-111				
PERFORMANCE CURVE NO.	TORQUE @ 1625 RPM (25°C)	APPROVED SAMPLE	UL COMPONENT	CSA
C31129	38.0 OZ. FT.	94AE831A	E46412	PRGY2 LR43341 4211-01

GREEN (GROUND)	12/13 [305/330]	#10 EYELET
BLACK/WHITE	3/5 [76/127]	REVERSING PLUG
BROWN	26/28 [660/711]	.25 [6.35] FLAG
BROWN/WHITE	26/28 [660/711]	.25 [6.35] FLAG
YELLOW	26/28 [660/711]	.50 [12.70] SKIN
BLACK	26/28 [660/711]	.50 [12.70] SKIN
BLUE	26/28 [660/711]	.50 [12.70] SKIN
RED	26/28 [660/711]	.50 [12.70] SKIN
COLOR	LENGTH	TERMINAL OR STRIP LENGTH

REGAL-BELOIT CORPORATION (RBC) PROVIDES TECHNICAL ASSISTANCE TO OUR CUSTOMERS IN SEVERAL AREAS. SINCE RBC DOES NOT RECEIVE ALL DATA CONCERNING THE USE AND APPLICATION OF THE MOTOR, THE SUITABILITY OF THE MOTOR FOR THE APPLICATION MUST BE DETERMINED BY THE CUSTOMER.

DIMENSIONS WITHOUT TOLERANCES ARE FOR REFERENCE ONLY.

MAIN FRAME - OLE	OPEN
END FRAME - OLE	OPEN
MAIN FRAME - LE	OPEN
END FRAME - LE	OPEN

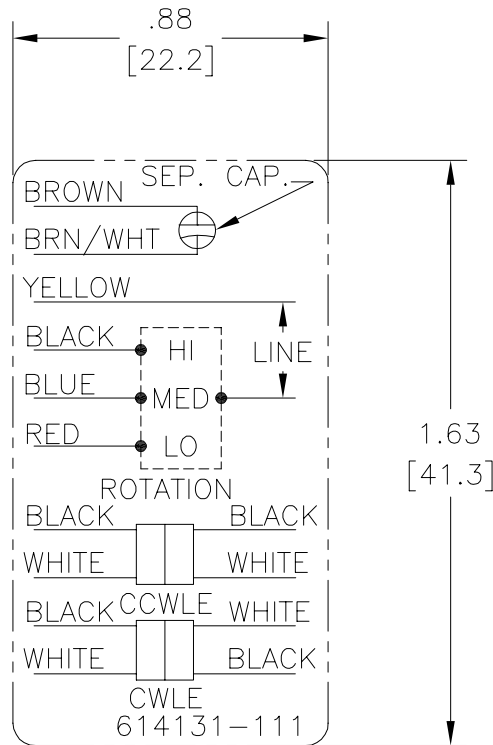
CUSTOMER	DISTRIBUTION SERVICE
----------	----------------------

LEAD DATA		ENCLOSURE	
DRAWING REVISION/REVISION BY	DATE	DRAWN BY:	J. CHAI
D	10-23-2019	DATE:	09-29-2016
ECC-0175405	APPROVED BY: KEVIN GONG	DATE:	09-29-2016
ECC-0175405	KEYUN GONG	DATE:	09-29-2016
ECC DESCRIPTION	Update view of mounting ring	APPROVED BY:	C. ZHOU
<small>COPYRIGHT REGAL-BELOIT AMERICA, INC. ALL RIGHTS RESERVED. PROPRIETARY AND CONFIDENTIAL INFORMATION - THIS DOCUMENT IS THE PROPERTY OF REGAL-BELOIT AMERICA, INC. ("OWNER") AND CONTAINS OWNER'S PROPRIETARY INFORMATION. ANY REPRODUCTION OR OTHER USE WITHOUT THE WRITTEN PERMISSION OF REGAL-BELOIT AMERICA, INC. IS STRICTLY PROHIBITED. BY RECEIVING IT, YOU AGREE THAT IT, AND/OR ANY PART OF IT, SHALL NOT BE DISCLOSED TO ANY PERSON, CORPORATION OR OTHER ENTITY, UNLESS YOU AND/OR USER HEREBY AS EXPRESSLY APPROVED IN WRITING BY OWNER. THIS DOCUMENT SHALL BE RETURNED TO OWNER UPON REQUEST. IT MAY BE SUBJECT TO CERTAIN RESTRICTIONS UNDER APPLICABLE EXPORT CONTROL LAWS AND REGULATIONS.</small>		PROCESS/FINISH	
		THIRD ANGLE PROJECTION	SIZE DWG NO
			C
		Regal Beloit America, Inc.	
		MODEL-RFHP-48FR OUTLINE	
		FDL1054	
		SHEET 1	

4 3 2 1

# Uncontrolled Copy

REV	ECO	REV BY	DATE	APPD	DATE
B	ECO-0014509	jrupert	05-25-2010	triley	05-25-2010



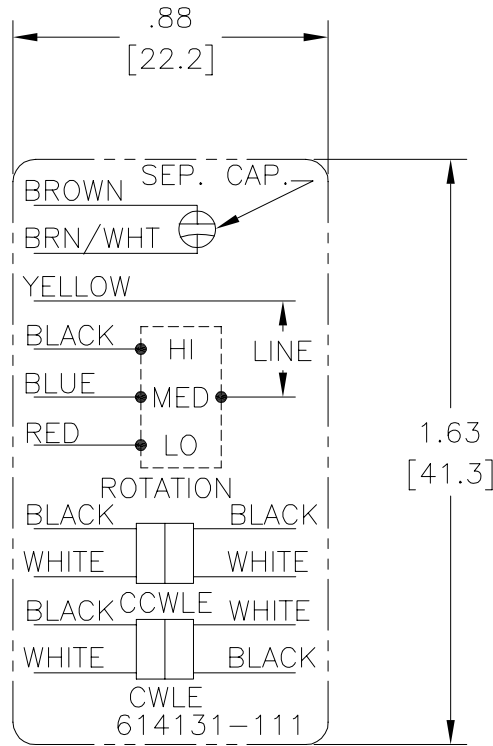
**NOTES:**

1. FOR USE WITH 614129 NAMEPLATE BLANK
2. — — — — — INDICATES DIMENSION LIMITS
3. DIE TO BE MADE FROM MASTER SUPPLIED BY A. O. SMITH CORPORATION
4. DIE MUST PRODUCE A LEGIBLE IMPRESSION.

<b>GEOMETRIC CHARACTERISTICS &amp; SYMBOLS</b> ▽ FLATNESS — STRAIGHTNESS ∠ ANGULARITY ⊥ PERPENDICULARITY (SQUARENESS) ∥ PARALLELISM ○ ROUNDNESS (CIRCULARITY) ⌀ CYLINDRICITY △ PROFILE OF ANY SURFACE ▽ PROFILE OF ANY LINE ↗ RUNOUT ⊕ TRUE POSITION ⊙ CONCENTRICITY = SYMMETRY	UNLESS OTHERWISE SPECIFIED DIM. TOLERANCES ARE AS FOLLOWS: INCH X XX XXX XXXX ±.1 ±.02 ±.005 ±.0005 mm ±0.5 ±0.13 ±0.013 ANG. ±.50 DEG REMOVE BURRS & BREAK SHARP EDGES: INCH .003-.015 mm 0.1-0.4 CORNER FILLETS TO: INCH .020 mm 0.5 MACHINE SURFACES: INCH 125 mm 3.2 METRIC DIMS. SHOWN IN [BRACKETS]	DR BY: jrupert APPD: triley THIRD ANGLE PROJECTION	05-25-2010 05-25-2010 EDS DATE 02-22-2008 FORMAT REV F	<b>ELECTRICAL PRODUCTS COMPANY</b> <small>A DIVISION OF A. O. SMITH CORPORATION</small>	DESCRIPTION <h2 style="text-align: center;">CONN DIAGRAM EXTERNAL</h2>
		CONFIDENTIAL: THIS DRAWING AND ITS INFORMATION ARE THE EXCLUSIVE AND CONFIDENTIAL PROPERTY OF A.O. SMITH CORP. AND ARE NOT TO BE DISCLOSED, DUPLICATED, DISTRIBUTED OR OTHERWISE USED WITHOUT THE WRITTEN CONSENT OF A.O. SMITH CORP. -ALL RIGHTS RESERVED. ASME Y14.5M 1994	SIZE A DWG NO 614131-111	SCALE NONE SHEET 1	

# Uncontrolled Copy

REVISION:	ECO	REVISADO POR:	FECHA:	APROBADO POR:	FECHA:
B	ECO-0014509	jrupert	05-25-2010	triley	05-25-2010



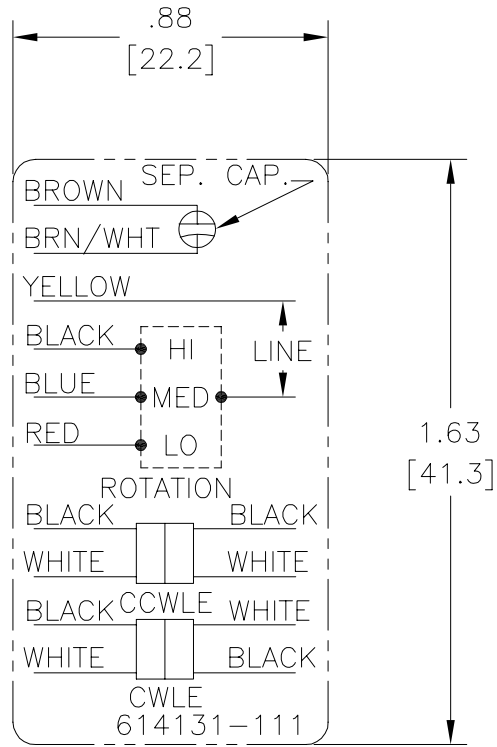
**NOTES:**

1. FOR USE WITH 614129 NAMEPLATE BLANK
2. — — — — — INDICATES DIMENSION LIMITS
3. DIE TO BE MADE FROM MASTER SUPPLIED BY A. O. SMITH CORPORATION
4. DIE MUST PRODUCE A LEGIBLE IMPRESSION.

CARACTERISTICAS DE GEOMETRIA Y SIMBOLOS Z PLANICIDAD — RECTITUD < ANGULARIDAD ⊥ PERPENDICULARIDAD (A ESCUADRA) // PARALELISMO ○ REDONDEZ (CIRCULARIDAD) ∅ CILINDRICIDAD △ PERFIL DE CUALQUIER SUPERFICIE ∩ PERFIL DE CUALQUIER LINEA / VARIACION ⊕ POSICION REAL ⊙ CONCENTRICIDAD = SIMETRIA	A MENOS QUE SE ESPECIFIQUE DE OTRA MANERA, LAS TOLERANCIAS DE LAS DIMS. SON LAS SIGUIENTES: X XX XXX XXXX PULG ±.1 ±.02 ±.005 ±.0005 mm ±0.5 ±0.13 ±0.013 ANG. ±.50 GRADOS ELIMINAR REBABAS Y ORILLAS FILOSAS DEL BORDE. PULG .003-.015 mm 0.1-0.4 FILETEAR ESQUINA: PULG .020 mm 0.5 MAQUINAR SUPERFICIES PULG 125 mm 3.2 DIMS METRICAS MOSTRADAS [PARENTESIS]	DIBUJADO POR: jrupert	05-25-2010	 <b>ELECTRICAL PRODUCTS COMPANY</b> <small>A DIVISION OF A. O. SMITH CORPORATION</small> DESCRIPCION: CONN DIAGRAM EXTERNAL	
	APROBADO POR: triley	05-25-2010	TERCER ANGULO DE PROYECCION 		FECHA EDS: 02-22-2008 REV. FORMATO: F
	CONFIDENCIAL: ESTE DIBUJO Y SU INFORMACION SON PROPIEDAD DE USO EXCLUSIVO Y CONFIDENCIAL DE A.O.SMITH CORP. Y NO DEBERAN SER REVELADOS, DUPLICADOS, DISTRIBUIDOS O USARSE DE OTRA MANERA SIN EL CONSENTIMIENTO ESCRITO DE A.O. SMITH CORP. -TODOS LOS DERECHOS RESERVADOS.ASME Y14.5M 1994				
	TAMAÑO: A		NUMERO DE DIBUJO: 614131-111		
ESCALA: NONE			HOJA: 1		

# Uncontrolled Copy

版本	ECO	编制	日期	批准	日期
B	ECO-0014509	jrupert	05-25-2010	triley	05-25-2010



**NOTES:**

1. FOR USE WITH 614129 NAMEPLATE BLANK
2. — — — — — INDICATES DIMENSION LIMITS
3. DIE TO BE MADE FROM MASTER SUPPLIED BY A. O. SMITH CORPORATION
4. DIE MUST PRODUCE A LEGIBLE IMPRESSION.

形位公差 □ 平面度 — 直线度 ∠ 倾斜度 ⊥ 垂直度 // 平行度 ○ 圆度 ⊙ 圆柱度 面轮廓度 线轮廓度 圆跳动 位置度 同轴度 ≡ 对称度	除另有注明 尺寸公差如下: 英寸 X XX XXX XXXX 毫米 ±.1 ±.02 ±.005 ±.0005 毫米 ±0.5 ±0.13 ±0.013 角度 ±.50 度 清理毛刺和尖棱 英寸 .003-.015 毫米 0.1-0.4 内圆角 英寸 .020 毫米 0.5 表面粗糙度 英制 125 米制 3.2 米制尺寸显示在 [ ]	绘图: jrupert 批准: triley 第三角投影	05-25-2010 05-25-2010 图纸格式发布日期 02-22-2008 图纸格式版本 F	<b>ELECTRICAL PRODUCTS COMPANY</b> <small>A DIVISION OF A. O. SMITH CORPORATION</small> 名称 <h2 style="margin: 0;">CONN DIAGRAM EXTERNAL</h2>	
	机密: 本图纸及相关信息所有权归A. O. SMITH公司所有。未经A. O. SMITH公司书面授权, 不得泄露、复制、传播或作其他用途。--版权所有 ASME Y14.5M 1994				图幅 A 图号 614131-111
				比例 NONE	页号 1