

Project Name: \_\_\_\_\_  
 Location: \_\_\_\_\_  
 Engineer: \_\_\_\_\_  
 Submitted to: \_\_\_\_\_  
 Submitted by: \_\_\_\_\_  
 Reference: \_\_\_\_\_

Approval: \_\_\_\_\_  
 Date: \_\_\_\_\_  
 Construction: \_\_\_\_\_  
 Unit #: \_\_\_\_\_  
 Drawing #: \_\_\_\_\_

### Performance

*Indoor Unit Model No:* FFQ12LVJU  
*Outdoor Unit Model No:* \_\_\_\_\_  
*Rated Cooling Capacity (Btu/hr):* 12000  
*Sensible Capacity (Btu/hr):* N/A  
*Max/Min Cooling Capacity (Btu/hr / kW):* N/A/N/A  
*Cooling Input Power (kW):* \_\_\_\_\_  
*SEER:* N/A  
*Rated Heating Capacity (Btu/hr):* 14000  
*Max/Min Heating Capacity (Btu/hr / kW):* N/A/N/A  
*Heating Input Power (kW):* \_\_\_\_\_  
*Heating COP (Btu/hr / Btu/hr):* data book  
*HSPF:* N/A

*Indoor Unit Type:* 2' X 2' Ceiling Cassette  
*Condensing Unit Type:* \_\_\_\_\_  
*Rated Cooling Conditions* Indoor: 80°F DB/67°F WB  
 Outdoor: 95°F DB/75°F WB  
*Rated Heating Conditions* Indoor: 70°F DB/60°F WB  
 Outdoor: 47°F DB/43°F WB  
*Rated Piping Length(ft)* \_\_\_\_\_  
*Rated Height Separation(ft)* \_\_\_\_\_

### Indoor Unit Details

*Power Supply (V/Hz/Ph):* 208-230/60/1ph  
*Power Supply Connections:* L1, L2, Ground  
*Min Circuit Amps MCA (A):* \_\_\_\_\_  
*Max Overcurrent Amps MFA (A):* 15  
*Dimensions (HxWxD):* 11 1/4x22 5/8x22 5/8  
*Panel (HxWxD):* 2 5/32x27 9/16x27 9/16  
*Net Weight (lbs):* 38.5  
*Weight with Panel (lbs):* 48

*Airflow Rate (CFM wet coil)* 353//230  
*Moisture Removal (pt/h):* \_\_\_\_\_  
*Gas Pipe Connection (inch):* 1/2  
*Liquid Pipe Connection (inch):* 1/4  
*Condensate Connection (inch):* 1-1/32  
*Sound Pressure Level (dBA):* 35  
*Sound Power Level (dBA):* \_\_\_\_\_  
*Static Pressure Rated/Max (inWg)* 0 / 0/0

### Condensing Unit Details

*Power Supply (V/Hz/Ph):* \_\_\_\_\_  
*Power Supply Connections:* \_\_\_\_\_  
*Min. Circuit Amps MCA (A):* \_\_\_\_\_  
*Max. Overcurrent Amps MFA (A):* \_\_\_\_\_  
*Max. Starting Current MSC(A):* \_\_\_\_\_  
*Rated Load Amps RLA (A):* \_\_\_\_\_  
*Dimensions (HxWxD):* N/A  
*Net Weight (lbs):* \_\_\_\_\_

*Compressor Type:* Inverter  
*Capacity Control Range (%):* \_\_\_\_\_  
*Airflow Rate (CFM):* N/A  
*Gas Pipe Connection (inch):* \_\_\_\_\_  
*Liquid Pipe Connection (inch):* \_\_\_\_\_  
*Sound Pressure Level (dBA):* \_\_\_\_\_  
*Sound Power Level (dBA):* \_\_\_\_\_

### System Details

*Refrigerant Type:* R-410A  
*Holding Refrigerant Charge (lbs):* data book  
*Additional Charge (oz/ft):* data book  
*Pre-charge Piping (Length ft):* data book  
*Max. Pipe Length (Total ft):* data book

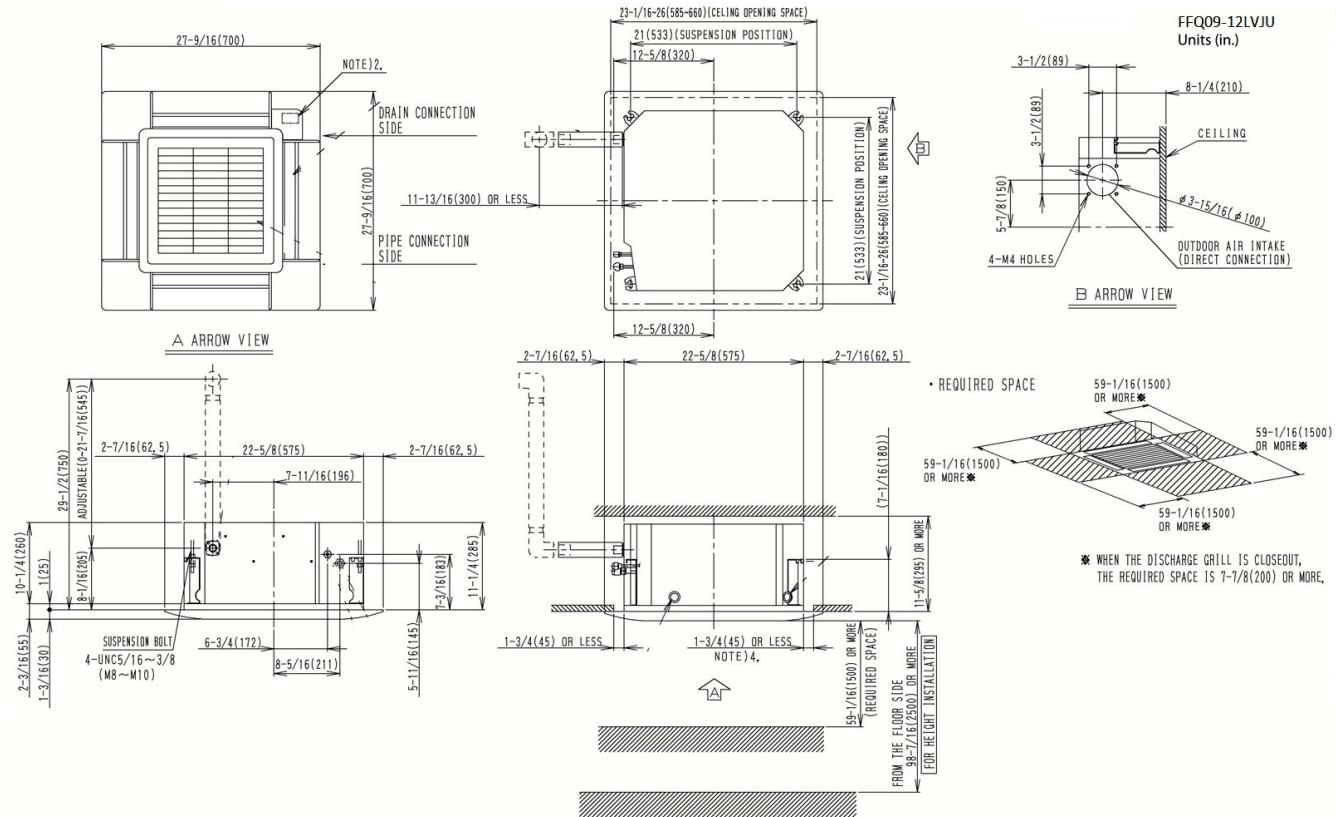
*Max. Pipe Length (Vertical ft):* data book  
*Cooling Operation Range (°F):* 57 - 82 WB (Room)  
*Cooling Range w/Baffle (°F):* \_\_\_\_\_  
*Heating Operation Range (°F):* 59 - 80 DB (Room)  
*Heating Range w/Baffle (°F):* \_\_\_\_\_

Project Name: \_\_\_\_\_  
 Location: \_\_\_\_\_  
 Engineer: \_\_\_\_\_  
 Submitted to: \_\_\_\_\_  
 Submitted by: \_\_\_\_\_  
 Reference: \_\_\_\_\_

Approval: \_\_\_\_\_  
 Date: \_\_\_\_\_  
 Construction: \_\_\_\_\_  
 Unit #: \_\_\_\_\_  
 Drawing #: \_\_\_\_\_

## Dimensional Drawing - Indoor Unit

FFQ12LVJU



Project Name: \_\_\_\_\_  
Location: \_\_\_\_\_  
Engineer: \_\_\_\_\_  
Submitted to: \_\_\_\_\_  
Submitted by: \_\_\_\_\_  
Reference: \_\_\_\_\_

Approval: \_\_\_\_\_  
Date: \_\_\_\_\_  
Construction: \_\_\_\_\_  
Unit #: \_\_\_\_\_  
Drawing #: \_\_\_\_\_

**FFQ12LVJU**



**FFQ12LVJU**

Std U.S. Warranty: 7yrs Compressor, 1yrs Parts

Std U.S. Warranty: 7yrs Compressor, 1yrs Parts