



NV SERIES HEAT PUMP OR COOLING ONLY SYSTEMS

INDOOR AND OUTDOOR UNITS
Up to 17.5 SEER / Up to 9.3 HSPF / Up to 9.85 EER
INVERTER, VARIABLE SPEED COMPRESSOR

Today, the air is perfect. Perfect temperature. Perfect humidity. Perfectly clean and fresh, like just after a rainstorm. And the only thing more perfect than this outdoor scenario is that it's all happening inside. Because that's where we work. That's where we play, where we sleep, where we truly live.

And that's why at Daikin, we aim to make the air inside as refreshing as the outside. Better comfort. Better control and efficiency. Better quality. So you can create your own unique ecosystem. And everyday is perfect. **Inside and out.**

NV SERIES HEAT PUMP OR COOLING ONLY SYSTEMS
Up to 17.5 SEER / Up to 9.3 HSPF / Up to 9.85 EER
INVERTER, VARIABLE SPEED COMPRESSOR



AIR INTELLIGENCE built inside

A better understanding of how people inhabit their living spaces has led to products designed to create indoor environments that help use energy resources more effectively. Heat pumps extract or reject heat from the outside air, even in cold weather. They use an electrically powered compressor and are extremely effective at

heating and cooling an apartment, home or a commercial space. Daikin heat pumps are quiet and discreet, and use state-of-the-art technology to help keep your energy bills low. With a Daikin heat pump, a large portion of the energy used to heat or cool your home comes from a free and infinitely renewable resource, the outside air.

INDOOR UNIT FEATURES



Indoor Unit Quiet Operation.

Sound levels are reduced by 2-3 decibels (dB) from the low fan speed for quieter and gentler heating and cooling.



Intelligent Eye. The intelligent eye is an infrared sensor with the ability to sense movement in the room. When you are in the room, the air conditioner operates normally. If you leave the room for more than 20 minutes the air conditioner automatically changes to an energy-saving operation. Using the intelligent eye, savings of up to 20% in cooling and up to 30% in heating can be achieved compared to units without this feature.



Program Dry Function.

This gives priority to reducing the level of humidity in the room rather than room temperature.



Auto Fan Speed.

To reduce operating sound and power consumption, the fan speed is automatically controlled by the microprocessor to suit the controller setting and prevailing room temperature.



Wide Angle Louvers. Smoothly curved wide-angle louvers provide wide airflow coverage for effective heating and cooling no matter where the indoor unit is placed within the room.



Dual Flap System.

This system directs warm air to the floor in winter and cool air across the room in summer to help maximize efficiency and comfort. The large flap governs airflow direction while the small flap (or diffuser) swings, producing fine air currents that help circulate the air around the room.



Comfort Mode.

Comfort mode operation improves comfort. When cooling, the flap positions itself horizontally to keep cold airflow from being blown directly onto the body. When heating, the flap turns vertically downwards to drive warm air to the bottom of the room.



3-D Airflow. Combines vertical and horizontal auto-swing to circulate cool/warm air to the corners of large spaces.

CONTROLS FEATURES



Remote Controller with Back-lit Display.

Features a back-lit LCD and luminescent control buttons, allowing for easy viewing in dimly lit rooms.



24-Hour On/Off Timer.

The timer can be preset to start and stop the air conditioner at any time within a 24-hour period. Once the times are set, the air conditioner can be operated for a period by simply pressing the ON or OFF timer buttons.



Weekly Timer. The weekly timer function makes it easy to enter up to four settings per day for each day of the week. The weekly timer function not only allows you to program on and off time, but also the desired temperature.

OUTDOOR UNIT FEATURES



Low Ambient Cooling. Cooling operation down to -22° F (-30° C) outside temperature for cooling only models. No field installed kit required.



Outdoor Unit Quiet Operation.

Outdoor unit sound levels can be reduced by 3dB for times when quieter operation is needed.



Automatic Operation.

For unattended year-round comfort, this function allows the unit to automatically switch between heating and cooling modes as required. (heat pumps types only)



Auto-Restart. The unit memorizes the operation mode, airflow and temperature settings. Should there be a power failure when the unit is in operation, it will automatically return to the same operating conditions when the power is restored.



Self-Diagnosis. In the event that a problem develops with the unit, malfunction codes can be displayed on the liquid crystal panel of the remote control for fast and easy fault diagnosis.



Anti-Corrosion. The special anti-corrosion coating on the outdoor unit heat exchanger provides resistance to salt damage and atmospheric corrosion.



Titanium Apatite Photocatalytic Air-Purifying Filter.

This filter combines the air-purifying filter and titanium apatite photocatalytic deodorizing filter in a single highly effective unit. The filter can last for up to three years without replacement if washed once every six months.



Night Set Mode.

Through the use of the 'Timer-OFF Circuit', the preset room temperature gently rises in cooling or falls in heating before the unit stops. This energy-saving feature allows you to sleep comfortably without feeling a sudden change in the room temperature, while at the same time saving energy.



Powerful Operation.

Pushing the POWERFUL button on the remote control gives you a boost in cooling or heating power for a 20-minute period, even if the unit is already operating at high capacity.



Wipe-Clean Flat Panel.

The flat panel models can be cleaned with only the single pass of a cloth across their smooth surface. The flat panel can also be easily removed for more thorough cleaning.



Hot Start. When the heating operation starts or when the unit changes from cooling to heating there is no cold draft released into the room. (Heat pumps only)



Automatic Defrosting. Sensor performs automatic defrosting of the outdoor heat exchanger if necessary, ensuring optimum heating performance. (Heat pumps only)



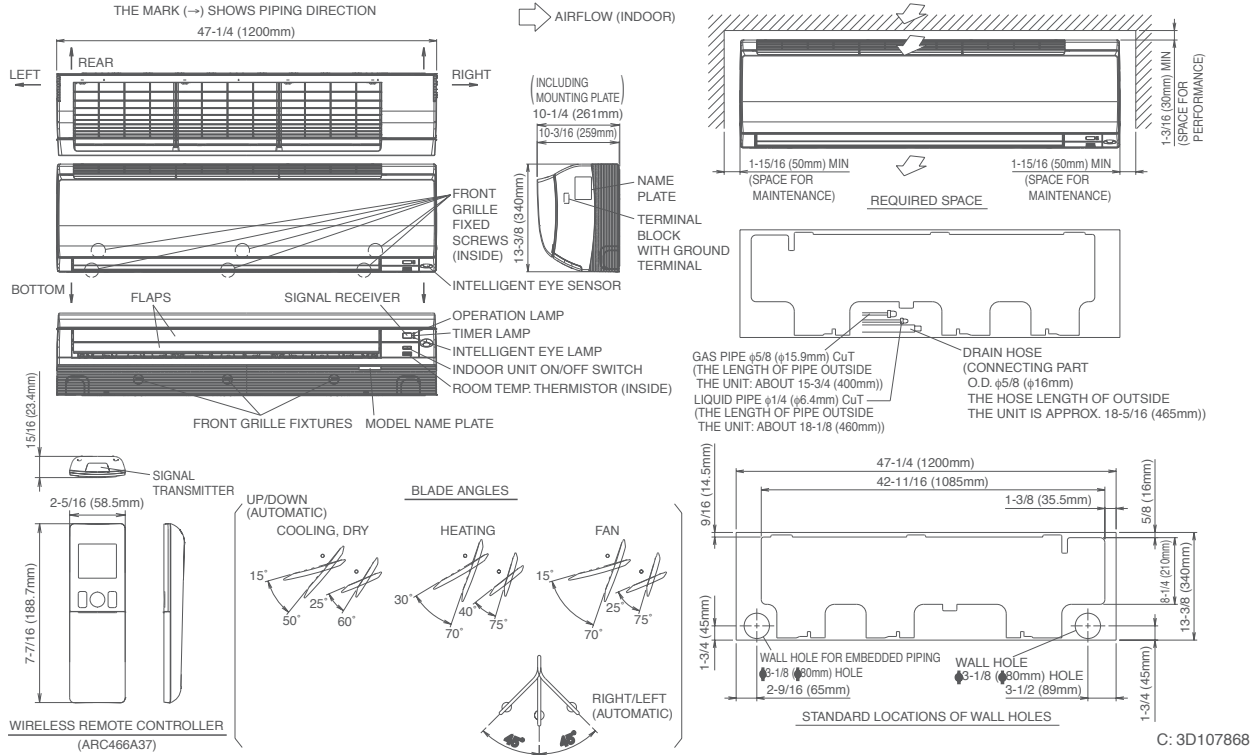
Econo Mode. Limits the maximum operating current and power consumption of the outdoor unit by approximately 30% during start-up. This saves energy and reduces the load on the electrical circuit when multiple electrical devices are used simultaneously.



UNIT DIMENSIONS

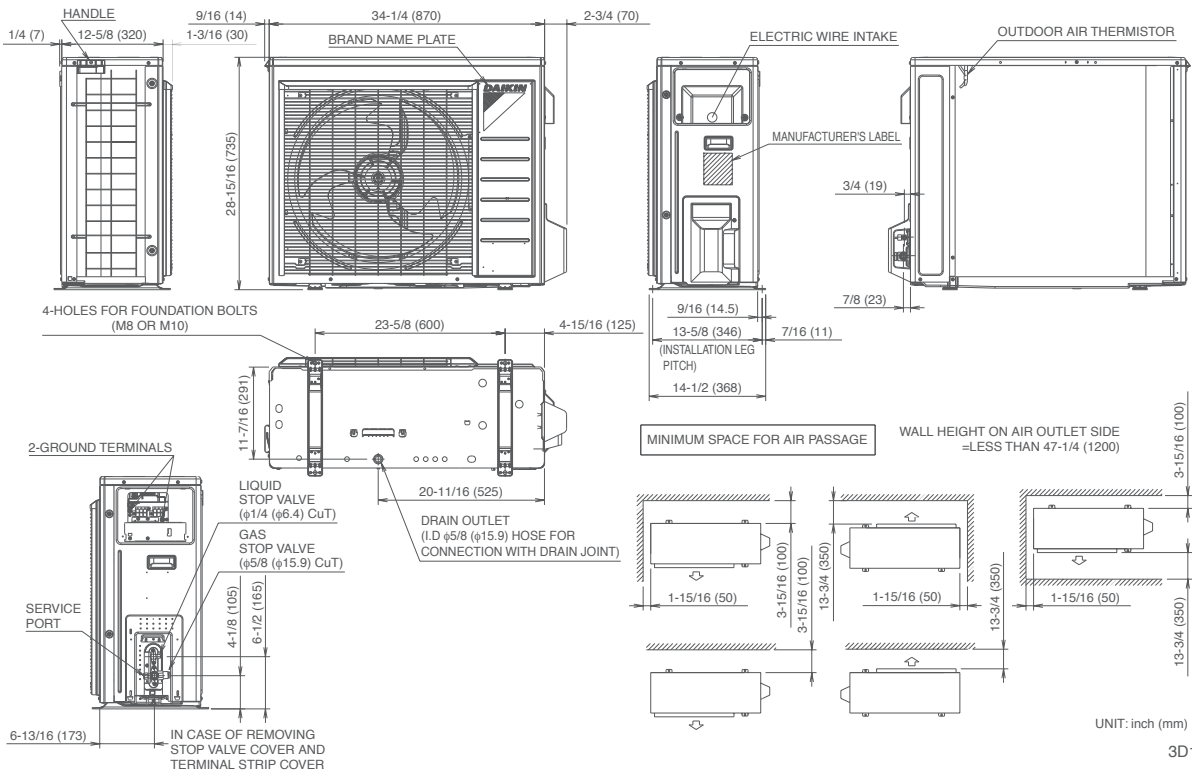
Indoor Unit

FTX30/36NVJU



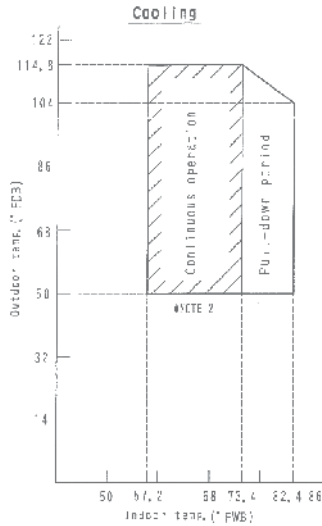
Outdoor Unit

RK(X)30/36NMVJU

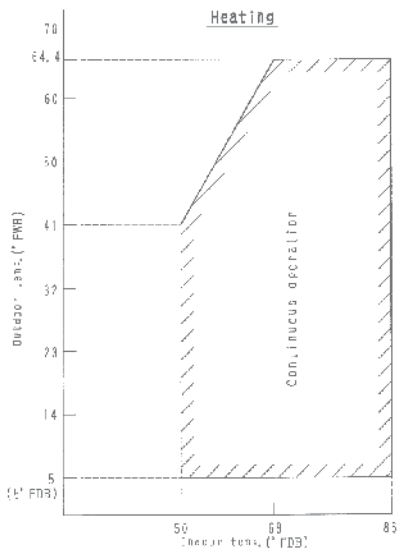


STANDARD OPERATION LIMITS

RK30/36NMVJU and
RX30/36NMVJU



RK30/36NMVJU



| SYSTEM PERFORMANCE | | | | |
|--|-------------------------------------|--------------|--|--------------------------|
| Model | Indoor (Cooling Only and Heat Pump) | | 2.5 Tons | 3.0 Tons |
| | Outdoor (Cooling Only) | | FTX30NVJU | FTX36NVJU |
| | Outdoor (Heat Pump) | | RK30NMVJU | RK36NMVJU |
| | | RX30NMVJU | RX36NMVJU | |
| Cooling Capacity (Rated) | | Btu/h | 31,400 | 34,400 |
| Cooling Capacity (Min. - Max.) | | Btu/h | 10,200 - 31,400 | 10,200 - 33,200 - 34,400 |
| Heating Capacity (Rated) | | Btu/h | 34,800 | 36,000 |
| Heating Capacity (Min. - Max.) | | Btu/h | 10,200 - 34,800 | 10,200 - 35,200 - 36,000 |
| SEER | | | 17.5 | 15.9 |
| EER | | | 9.85 | 9.1 |
| HSPF* | | | 9.3 | 9.2 |
| Piping Connections | Liquid | in. (mm) | Ø 1/4 (Ø 6.4) | Ø 1/4 (Ø 6.4) |
| | Gas | | Ø 5/8 (Ø 15.9) | Ø 5/8 (Ø 15.9) |
| | Condensate Drain | | Ø 5/8 (Ø 15.9) | Ø 5/8 (Ø 15.9) |
| Max. Interunit Piping Length | | ft. (m) | 98-3/8 (29.8) | |
| Max Interunit Piping Height | | | 65-5/8 (20) | |
| Chargeless | | | 32-13/16 (9.8) | |
| Amount of Additional Charge of Refrigerant | | oz./ft (g/m) | 0.32 (30) | |
| Indoor Dimensions (H × W × D) | | in. (mm) | 13-3/8 x 47-1/4 x 10-3/16 (350 x 1200 x 259) | |
| Outdoor Dimensions (H × W × D) | | in. (mm) | 28-15/16 x 34-1/4 x 12-5/8 (729 x 870 x 320) | |
| Operating Range - Cooling - RX/RK Standard | | °F DB (°C) | 50 - 115 (10 - 46) | |
| Operating Range - Cooling - RX/RK Enhanced* | | °F DB (°C) | 14 - 115 (-10 - 46) | |
| Operating Range - Cooling - RX/RK Low Ambient** | | °F DB (°C) | -4 - 115 (-20 - 46) | |
| Operating Range - Cooling - RK Only - Ultra Low Ambient*** | | °F DB (°C) | -22 - 115 (-30 - 46) | |
| Operation Range - Heating† | | °F WB (°C) | 5 - 65 (-15 - 18) | |

* Activated with a dipswitch setting. Refer to installation manual for more details.

** Activated with a dipswitch setting and use of air direction adjustment grille (KPW063A4). Refer to installation manual for more details.

*** Activated with additional dipswitch setting and notes per **. Refer to installation manual for more details.

† Applicable to heat pump models only.

| Unit Combination | | Power Supply | | Compressor | | OFM | | IFM | | |
|------------------|--------------|--------------|-----------------------|------------|-----|-------|-----|------|----|------|
| Indoor Unit | Outdoor Unit | Hz - Volts | Voltage Range | MCA | MOP | RLA | W | FLA | W | FLA |
| FTX30NVJU | RK30NMVJU | 60 - 208 | Min. 187 V Max. 253 V | 17 | 20 | 16.25 | 93 | 0.62 | 64 | 0.37 |
| | | 60 - 230 | | | | | | | | |
| FTX36NVJU | RK36NMVJU | 60 - 208 | Min. 187 V Max. 253 V | 17 | 20 | 16.25 | 123 | 0.83 | 64 | 0.37 |
| | | 60 - 230 | | | | | | | | |
| FTX30NVJU | RX30NMVJU | 60 - 208 | Min. 187 V Max. 253 V | 19.8 | 20 | 18.25 | 93 | 0.62 | 64 | 0.37 |
| | | 60 - 230 | | | | | | | | |
| FTX36NVJU | RX36NMVJU | 60 - 208 | Min. 187 V Max. 253 V | 19.8 | 20 | 18.25 | 123 | 0.83 | 64 | 0.37 |
| | | 60 - 230 | | | | | | | | |

Notes:

1. The graphs are based on the following conditions:

- Equivalent piping length 25 ft.
- Level difference 0 ft.
- Air flow rate High

2. Facility setting (cooling at low outdoor temperature):

- This function is limited only for facilities (the target of air conditioning is equipment such as computer)
- Never use it in a residence or office (the space where there is a human)
- Refer to the installation manual in detail of setting

| Indoor Unit | Optional Accessories | Outdoor Unit | Optional Accessories |
|-------------|--|--------------|---------------------------------|
| BRC944B2 | Wired Remote Controller (Requires 1 cord below) | KPW063A4 | Air Direction Adjustment Grille |
| BRCW901A03 | Wired Remote Controller Cord (Shielded wire) 9.8 ft | KKG063A42 | Back Protection Wire Net |
| BRCW901A08 | Wired Remote Controller Cord (Shielded wire) 26.3 ft | KKP937A4 | Drain Plug - Standard |
| BRP072A43 | Wireless LAN connection Adaptor | KEH063A4E | Drain Pan Heater |
| KAF970A48 | Titanium Apatite Deodorizing Filter (Without frame) Standard | KPS063A41 | Snow Hood (Intake side panel) |
| KKF910AA4 | Remote Controller Loss Prevention with Chain | KPS063A44 | Snow Hood (Intake side panel) |
| | | KPS063A47 | Snow Hood (Outlet) |



* Complete warranty details available from your local dealer/contractor or at www.daikincomfort.com.



Smart Inverter Technology

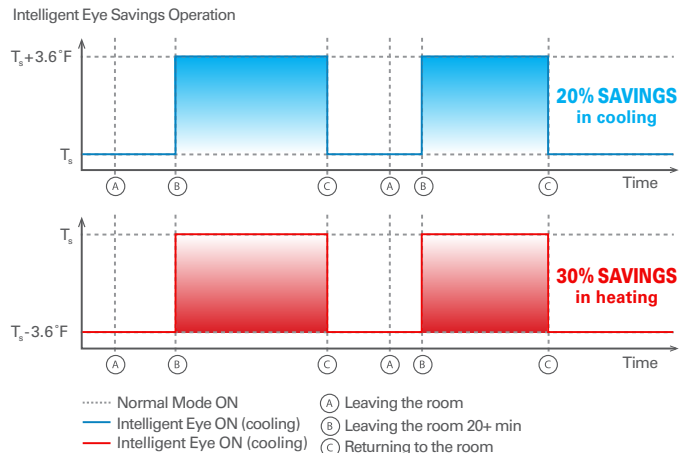
Integrated with an inverter variable-speed compressor, Daikin systems deliver the capacity required to maintain desired room conditions, typically reducing energy consumption by up to 30% or more (compared to traditional fixed-speed ducted systems). This technology minimizes temperature fluctuations and provides continuous cooling and heating comfort.

Feel the Difference

Comfort Airflow, 3-D Airflow, and Wide Angle Louvers are just a few of the features used in the NV Series to improve comfort in a room. Comfort Mode minimizes drafts by positioning flaps horizontally, so that cold air does not blow directly on the body in cooling mode, and downwards to drive warm air to the bottom of the room while heating. The 3-D Airflow setting combines vertical and horizontal auto-swing to circulate air throughout a large space.

See the Difference

Equipped with the intelligent eye feature, this function detects movement and automatically changes to an energy saving mode when movement is not detected for over 20 minutes. Normal operation resumes once movement is detected, ensuring a comfortable experience and offering savings up to 20% in cooling and up to 30% in heating compared to units without this feature.



Experience the Difference

Activated by the exposure to natural light, the titanium apatite photocatalytic air purification filter can last for up to three years with proper maintenance.



Individual comfort and control.

Daikin systems come standard with an infrared remote controller allowing you to access all functions at the click of a button.

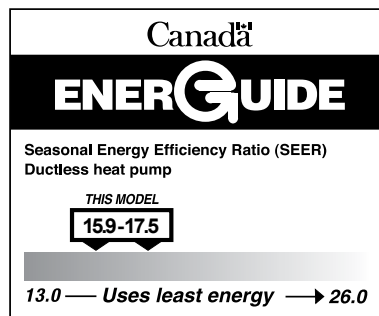
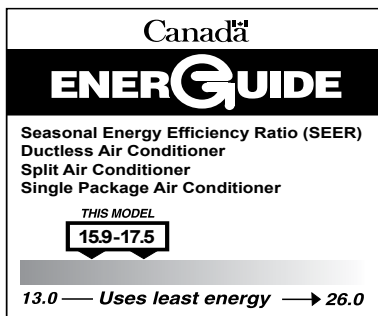
From anywhere in the world. Or your living room.

It can happen to anyone. You forgot to change the temperature of your heat pump system or air conditioner before leaving the house, or you will be delayed returning home and wish to avoid needlessly heating or cooling your home. What in the past would have resulted in wasted energy is no longer a problem. With the new Daikin Comfort Control App, you are always in control. You can use your tablet or smart-phone to access your Daikin system via the internet*.

*Requires purchase and installation of adapter (BRP072A43).

WARNINGS:

- » Always use a licensed installer or contractor to install this product. Do not try to install the product yourself. Improper installation can result in water or refrigerant leakage, electrical shock, fire or explosion.
- » Use only those parts and accessories supplied or specified by Daikin. Ask a licensed contractor to install those parts and accessories. Use of unauthorized parts and accessories or improper installation of parts and accessories can result in water or refrigerant leakage, electrical shock, fire or explosion.
- » Read the User's Manual carefully before using this product. The User's Manual provides important safety instructions and warnings. Be sure to follow these instructions and warnings.
- » For any inquiries, contact your local Daikin sales office.



ADDITIONAL INFORMATION

Before purchasing this appliance, read important information about its estimated annual energy consumption, yearly operating cost, or energy efficiency rating that is available from your retailer.



Our continuing commitment to quality products may mean a change in specifications without notice.
© 2019 **DAIKIN NORTH AMERICA LLC** · Houston, Texas · USA · www.daikincomfort.com or www.daikinac.com



CB-FTXNV 11-19