

# PRODUCT INFORMATION PACKET

FASCO®

Model No: D909  
Catalog No: D909  
1/4 HP Condenser Fan Motor, 1075 RPM, 208/230 Volts, 48 Frame, TEAO  
Condenser Fans Motors



Regal and Fasco are trademarks of Regal Beloit Corporation or one of its affiliated companies.  
©2020 Regal Beloit Corporation, All Rights Reserved. MC017097E

REGAL



**Nameplate Specifications**

Output HP	1/4 Hp	Output KW	0.19 kW
Frequency	60 Hz	Voltage	208-230 V
Current	1.8 A	Speed	1075 rpm
Service Factor	1	Phase	1
Duty	Continuous	Insulation Class	B
Frame	48	Enclosure	Totally Enclosed Air Over
Thermal Protection	Automatic	Ambient Temperature	40 °C
UL	Recognized	CSA	Y
CE	N		

**Technical Specifications**

Electrical Type	Permanent Split Capacitor	Starting Method	Across The Line
Poles	4	Rotation	Reversible
Mounting	Extended Studs	Drive End Bearing	Sleeve
Opp Drive End Bearing	Sleeve	Frame Material	Rolled Steel
Shaft Type	Double Flat	Frame Length	3.98 in
Shaft Diameter	0.500 in	Shaft Extension	6.5 in
Outline Drawing	8856MTS-A12U		

This is an uncontrolled document once printed or downloaded and is subject to change without notice. Date Created:22/09/2020

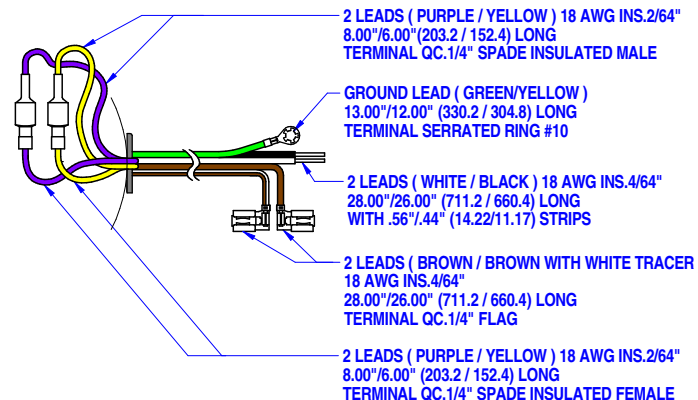
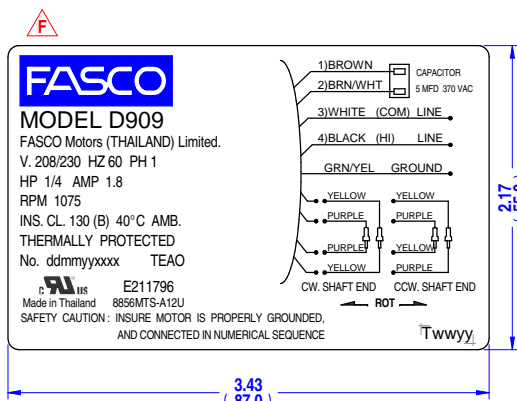
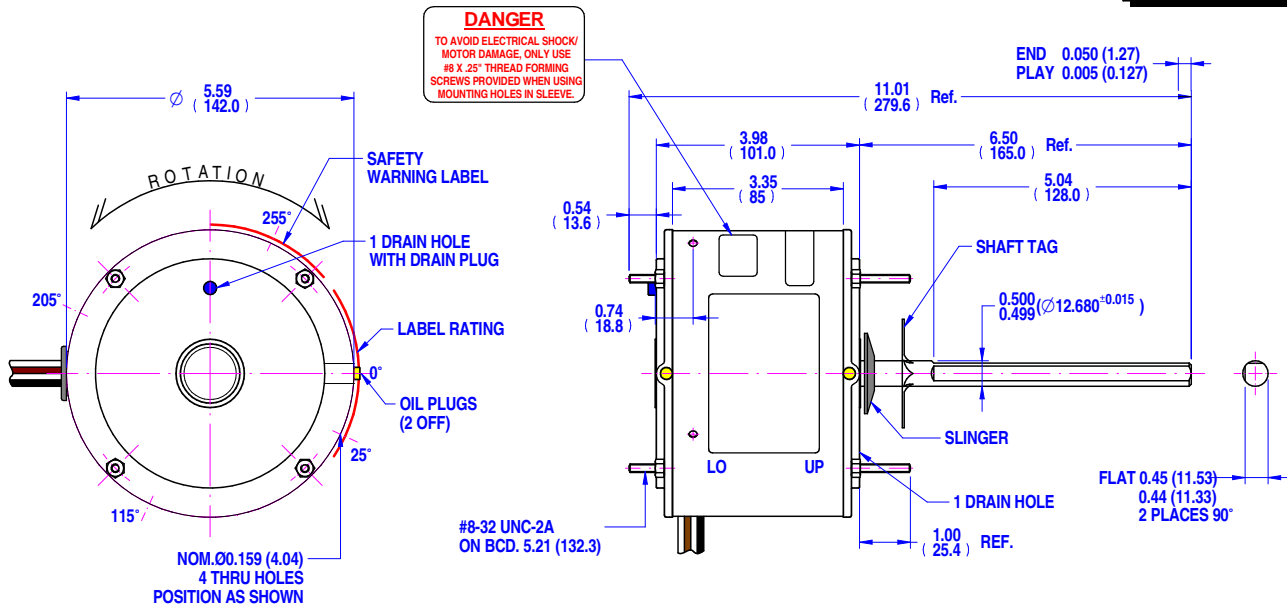
**MOTOR SPECIFICATION**

**8856MTS-A12U**

Q.R. No.	Y005166	CUSTOMER NO.	D909					
CUSTOMER	FASCO USA							
MOTOR RATING	VOLTS	208/230	Hz	60	Ph	1	Duty	S1 AOM
	RPM.	1075		1.8		AMPS		
NOM. OUTPUT	1/4 HP							
ROTATION	REVERSIBLE							
CAPACITOR	START	-----	μF/V	RUN	5/---	μF/V		
ENCLOSURE	T.E.A.O.							
MOTOR TYPE	PSC	INSULATION CLASS	130 (B)					
THERMAL PROTECTION	AUTO RESET OVERLOAD							
APPLICATION	FAN CONDENSING - SHAFT HORIZONTAL							
BEARING D.E.	SLEEVE	LUBRICATION	PERMAWICK OPERA.TEMP			-15°-90°C		
BEARING N.D.E.	SLEEVE							
SUPPLY LEAD	AS SHOWN							
EARTH PROVISION	SUPPLIED							
BASIC BUILD SPECIFICATION	305-881-27	PAINT/ COLOUR	PC GREY PLAIN E/SHIELDS					
PERFORMANCE SPECIFICATION	SP88011-01							
CONNECTION DIAGRAM	AS SHOWN	RATING LABEL	AS SHOWN					

**FINAL INSPECTED MOTORS MUST COMPLY WITH ELECTRIC MOTOR VIBRATION SPECIFICATION (ES049)**

THIRD ANGLE PROJECTION



NOTE: DIMENSIONS SHOWN INCH (mm.)  
STK - 32

UNLESS OTHERWISE SPECIFIED : DIMENSIONS ARE IN MM. TOLERANCES

DECIMALS	ANGULAR
.X ± 1.0	± 30'
.XX ± 0.1	

THIS DRAWING REMAINS THE PROPERTY OF FASCO MOTORS AND MAY NOT BE USED, COPIED OR ISSUED WITHOUT WRITTEN PERMISSION FROM FASCO MOTORS

MOTOR WEIGHT	5.0 kg.	
DRAWN	muntana	24/10/2013
CHECKED	Pipat	16/08/2017
RELEASED	Sutthipant	16/08/2017
SCALE	N.T.S.	

**FASCO THAILAND**  
29/7-8 MOO 3, BANGKRUAY - SAINOI Rd., BANGKRANG, MIJANG NONTHABURI DISTRICT, NONTHABURI 11000 THAILAND

FRAME	MOTOR	
STATUS	R	
SHEET	S011:8856T-250-MCX:FDC	
A3	DWG. NO.	8856MTS-A12U
	REVISION	F