

# PRODUCT INFORMATION PACKET

FASCO®

Model No: D783

Catalog No: D783

1/4 HP OEM Replacement Motor, 1625 RPM, 208-230 Volts, 48 Frame, Semi Enclosed  
HVAC/R OEM Replacement Motors



Regal and Fasco are trademarks of Regal Beloit Corporation or one of its affiliated companies.  
©2020 Regal Beloit Corporation, All Rights Reserved. MC017097E

REGAL



**Nameplate Specifications**

Output HP	1/4 Hp	Output KW	0.19 kW
Frequency	60 Hz	Voltage	208-230 V
Current	1.58 A	Speed	1625 rpm
Service Factor	1	Phase	1
Duty	Continuous	Insulation Class	B
Frame	48	Enclosure	Open Drip Proof
Thermal Protection	Automatic	Ambient Temperature	40 °C
UL	Recognized	CSA	Y
CE	N		

**Technical Specifications**

Electrical Type	Permanent Split Capacitor	Starting Method	Across The Line
Poles	4	Rotation	Reversible
Mounting	Extended Studs	Drive End Bearing	Sleeve
Opp Drive End Bearing	Sleeve	Frame Material	Rolled Steel
Shaft Type	Double Flat	Frame Length	3.45 in
Shaft Diameter	0.500 in	Shaft Extension	5.94 in
Outline Drawing	8854MVS-A11U		

This is an uncontrolled document once printed or downloaded and is subject to change without notice. Date Created:22/09/2020

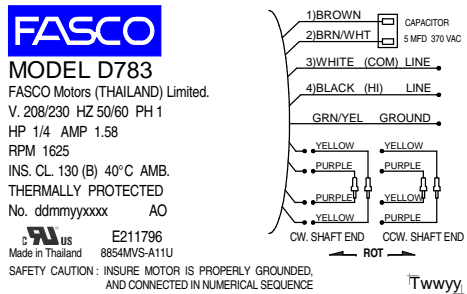
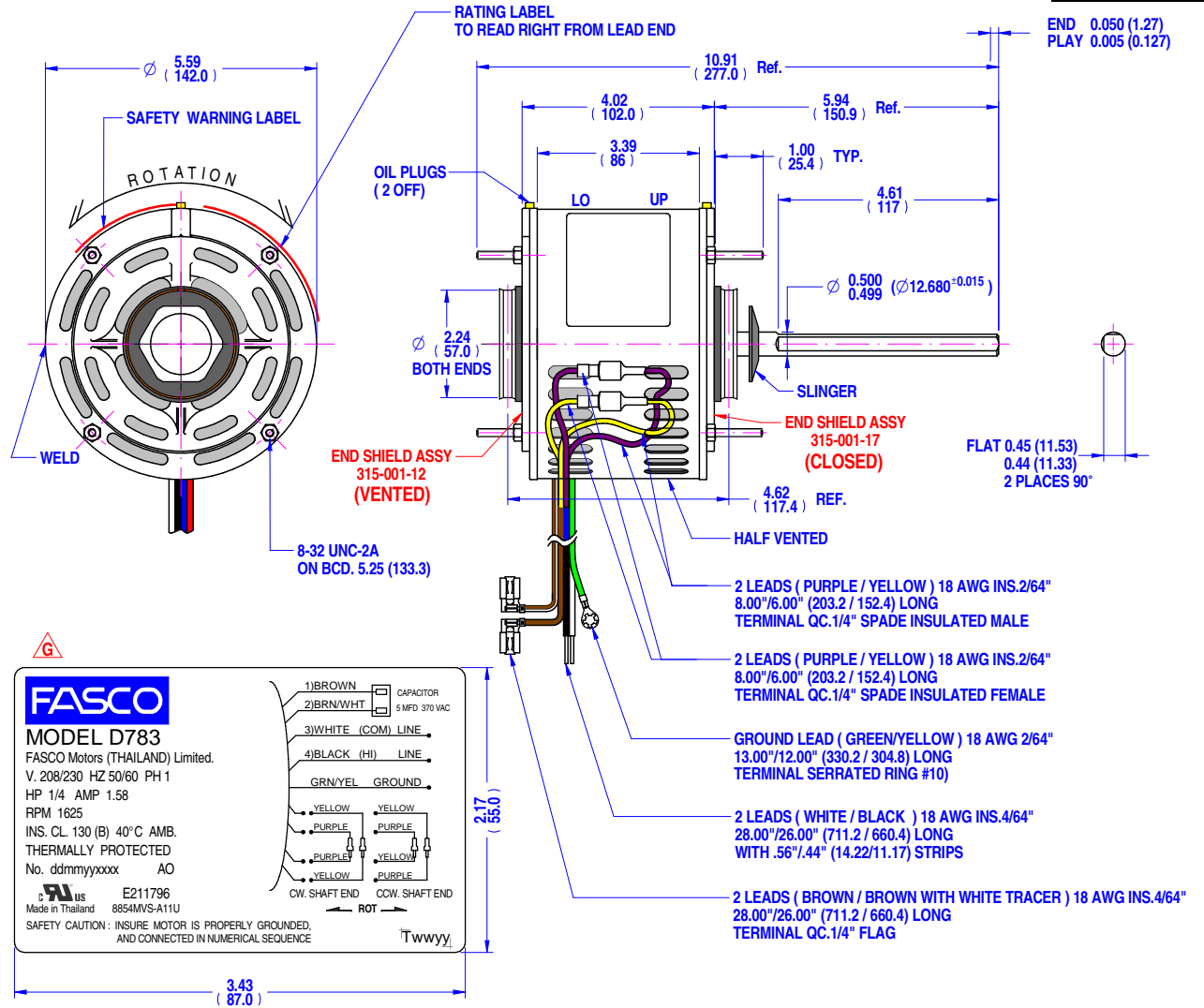
**MOTOR SPECIFICATION**

**8854MVS-A11U**

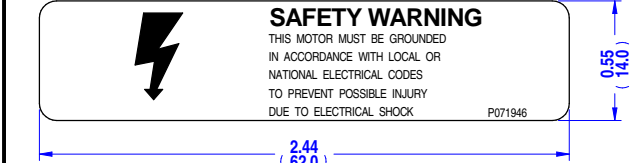
Q.R. No.	Y005161	CUSTOMER NO.	D783
CUSTOMER	FASCO USA		
MOTOR RATING	VOLTS	208/230	Hz 50/60 Ph 1 Duty S1 AOM
	RPM.	1625	1.58 $\Delta$ AMPS
NOM. OUTPUT	234 WATTS (1/4 HP)		
ROTATION	REVERSIBLE		
CAPACITOR	START	-----	$\mu$ F/V RUN 5/--- $\mu$ F/V
ENCLOSURE	DRIPPROOF		
MOTOR TYPE	PSC	INSULATION CLASS	130 (B)
THERMAL PROTECTION	AUTO RESET OVERLOAD		
APPLICATION	FAN AXIAL - SHAFT HORIZONTAL		
BEARING D.E.	SLEEVE	LUBRICATION	PERMAWICK OPERA.TEMP -15°-90°C
BEARING N.D.E.	SLEEVE		
SUPPLY LEAD	AS SHOWN		
EARTH PROVISION	SUPPLIED		
BASIC BUILD SPECIFICATION	305-881-24	PAINT/ COLOUR	PC GREY PLAIN E/SHIELDS
PERFORMANCE SPECIFICATION	SP88029-01		
CONNECTION DIAGRAM	AS SHOWN	RATING LABEL	AS SHOWN

**FINAL INSPECTED MOTORS MUST COMPLY WITH ELECTRIC MOTOR VIBRATION SPECIFICATION (ES049)**

THIRD ANGLE PROJECTION



NOTE: DIMENSIONS SHOWN INCH (mm.)  
STK - 32



**SPECIAL REQUIREMENTS:**

- 1)\_CAPACITOR SUPPLIED BY CUSTOMER.
- 2)\_DO NOT PACK MOTOR IN PLASTIC BAG.
- 3)\_PUSH AND PULL SHAFT TO CENTRALIZE WASHER SLINGER.
- 4)\_STAMP FDC PART NUMBER FDC-D783 ON THE BULK PACK.
- 5)\_ADD SAFETY BOOK P/N 398-063-02 IN ALL INDIVIDUAL CARTON.

<b>UNLESS OTHERWISE SPECIFIED : DIMENSIONS ARE IN MM. TOLERANCES</b>		<b>MOTOR WEIGHT</b>	
DECIMALS	ANGULAR	5.4 kg.	
.X ± 1.0	± 30'	DRAWN	muntana 25/10/2013
.XX ± 0.1		CHECKED	Pipat 18/04/2018
THIS DRAWING REMAINS THE PROPERTY OF FASCO MOTORS AND MAY NOT BE USED, COPIED OR ISSUED WITHOUT WRITTEN PERMISSION FROM FASCO MOTORS		RELEASED	Suksakorn 18/04/2018
		SCALE	N.T.S.

<p>29/8 MOO 3, BANGKRUAY - SAINOI Rd., BANGKRANG, MIJANG NONTABURI DISTRICT, NONTABURI 11000 THAILAND</p>	FRAME	MOTOR	
	STATUS	R	S029:8854V-234-MCX:FDC
	SHEET	DWG. NO.	8854MVS-A11U
	A3	REVISION	G

MIC:1804215  
 By: Muntana  
 Date:18/04/2018  
 MIC: G- change AMP on name plate and label packing from  
 Note: 1.50 to 1.58 amp