

PRODUCT INFORMATION PACKET

FASCO®

Model No: D410
Catalog No: D410
1/10 HP Draft Inducer Motor, 3000 RPM, 115 Volts, 3.3" Diameter, Semi Enclosed
Draft Inducer Motors



Regal and Fasco are trademarks of Regal Beloit Corporation or one of its affiliated companies.
©2020 Regal Beloit Corporation, All Rights Reserved. MC017097E

REGAL



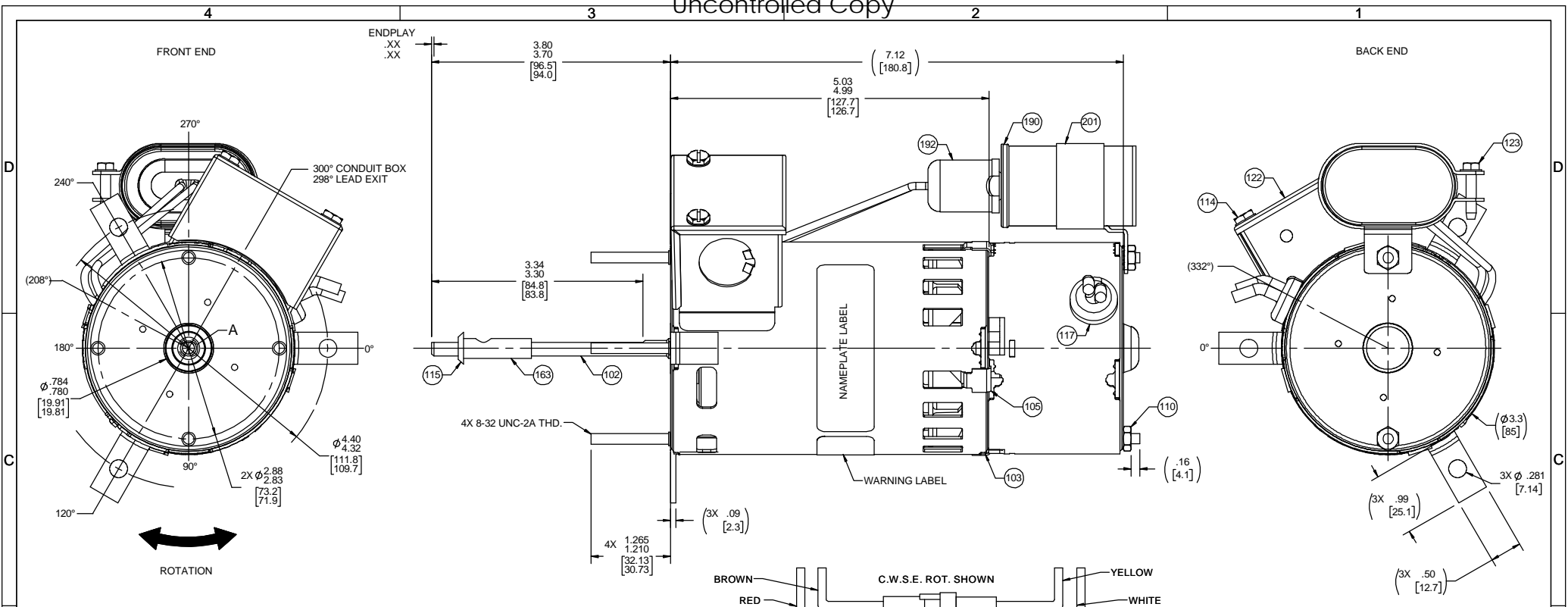
Nameplate Specifications

Output HP	1/10 Hp	Output KW	0.07 kW
Frequency	60 Hz	Voltage	115 V
Current	1.5 A	Speed	3000 rpm
Service Factor	1	Phase	1
Duty	Air Over	Insulation Class	B
Frame	3.3	Enclosure	Open Air Over
Thermal Protection	Thermally Protected	Ambient Temperature	40 °C
UL	Recognized	CSA	N
CE	N		

Technical Specifications

Electrical Type	Permanent Split Capacitor	Starting Method	Across The Line
Poles	2	Rotation	Reversible
Mounting	Extended Studs	Drive End Bearing	Ball
Opp Drive End Bearing	Ball	Frame Material	Steel
Shaft Type	Flat	Overall Length	10.92 in
Frame Length	4.80 in	Shaft Diameter	0.250 in
Shaft Extension	3.80 in		
Connection Drawing	00469122	Outline Drawing	71621821

This is an uncontrolled document once printed or downloaded and is subject to change without notice. Date Created:06/11/2020



LEAD MATERIAL
18 GA 125°C. 2/64 INSUL.
X-LINKED POLY.
(2) BLACK 23.00 / 21.00 [584.2 / 533.4]
W/STRIP .56 / .44 [14.2 / 11.2]

REVERSING LEADS
WHITE, RED, BROWN, YELLOW
4.00 / 3.00 [101.6 / 76.2]

CAPACITOR LEADS
(2) BLUE 7.00 / 5.00 [177.8 / 127.0]
W/FFLAG TERMS. AMP 42742-2

SWITCH LEADS
18 GA 125°C. 4/64 INSUL. EPDM
(2) WHITE 23.00 / 21.00 [584.2 / 533.4]
W/STRIP .56 / .44 [14.2 / 11.2]

SAFETY WARNING
This motor must be grounded in accordance with local or national electrical codes to prevent possible injury due to electrical shock

AVERTISSEMENT DE SÉCURITÉ
Ce moteur doit être fondée sur conformément à la réglementation locale ou national électrique codes pour prévenir d'éventuelles blessures en raison de choc électrique

- NOTES:**
1. COIL LINE & REVERSING LEADS INSIDE CONDUIT BOX COVER AFTER TESTING AND SCURE WITH SCREW.
 2. NO KNOCKOUTS REMOVED.
 3. MOTOR HAS 416 STAINLESS STEEL SHAFT.
 4. ASSEMBLE BUSHING TO SHAFT AND HOLD IN PLACE WITH OIL SLINGER.
 5. NO PACKAGING TAPE OVER CARTON LABEL.

00464072

FASCO Fasco Industries, Inc. Motor Division

Assembled In Mexico No. 71621821

TYPE U62B1 60 Hz 1.5 A Model D410 SW280-1

T.P. Class B AO Sealed Ball Brg (1 spd)

Connection Diagram

CCWSE CWSE

Blk Line Blk Line
Blk Line Blk Line
Yel Ins Wht Ins
Red Ins Wht Ins
Wht Ins Yel Ins
Bm Ins Brn Ins
Blu Ins

7.5 MFD/370 VAC

61299553

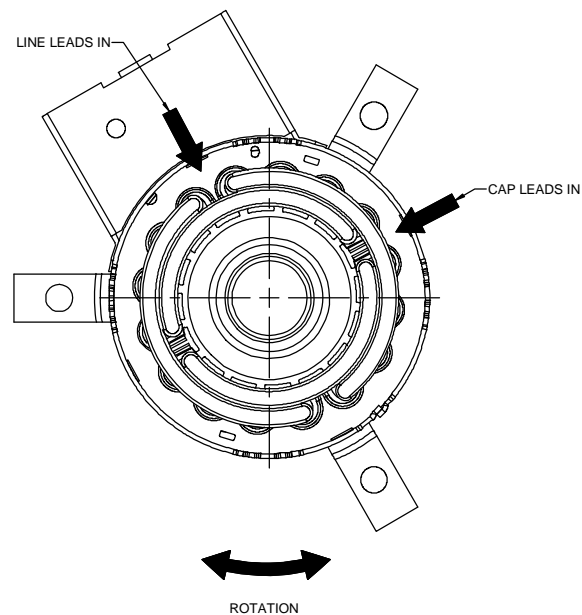
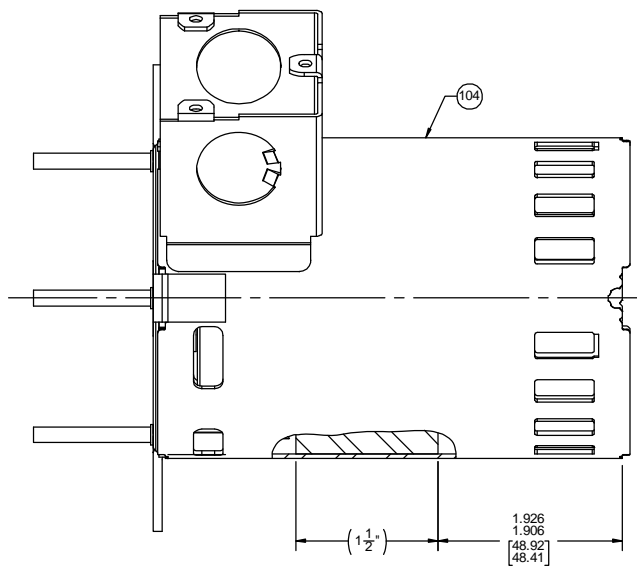
CUSTOMER:	FASCO DIST.	APPLICATION:	COUNTER SALES
CUSTOMER PN:	D410	MOTOR WEIGHT:	5.75 LBS.
	UP	ENVIRONMENT:	DRY
MOTOR TYPE		REFERENCE SAMPLE	
P.S.C.			
B	LA	FR	A
00	62	34	F
		06	KH
		5	0
		0	0
TYPICAL PERFORMANCE AT 115 VOLTS 60 HZ			
IDLE		LOADED	
CAP: 7.5 MFD/370 VAC		LOCKED	
BREAK			
MOTOR SPEED	RPM	AMP	WATT
	3528	.64	73
		38.7	3000
		1.42	163
		26.3	2.30
		246	45.7

DRAWING REVISION	REVISION BY	REV DATE/DATE	TOLERANCES (EXCEPT AS NOTED)	DRAWN BY	DESCRIPTION
AJ	SED	10/12/2020	DEC .X ±0.1 [±0.3]	S.DALTON	Regal Beloit America, Inc.
ECO-0192906	APPROVED BY	DATE	.XX ±0.01 [±0.3]	12-13-2001	
	MLS	10/12/2020	.XXX ±0.005 [±0.13]	APPROVED BY	
REVISED SHAFT FLAT CONFIGURATION			.XXXX ±0.0005 [±0.013]	DATE	
COPYRIGHT (PER REVISION DATE) REGAL BELOIT AMERICA, INC. ALL RIGHTS RESERVED. PROPRIETARY AND CONFIDENTIAL INFORMATION. THIS DOCUMENT IS THE PROPERTY OF REGAL BELOIT AMERICA, INC. FORMERLY AND CONTAINING OWNERS PROPRIETARY INFORMATION. ANY PERSON, CORPORATION OR OTHER FIRM RECEIVING IT IS DEEMED BY RECEIVING IT, TO AGREE THAT IT, AND/OR ANY PART OF IT, SHALL NOT BE DISCLOSED TO ANY PERSON, CORPORATION OR OTHER ENTITY, DUPLICATED, AND/OR USED, EXCEPT AS EXPRESSLY APPROVED IN WRITING IN ADVANCE BY OWNER. THIS DOCUMENT SHALL BE RETURNED TO OWNER UPON REQUEST. IT MAY BE SUBJECT TO CERTAIN RESTRICTIONS UNDER APPLICABLE EXPORT CONTROL LAWS AND REGULATIONS.			REMOVE BURRS & BREAK SHARP EDGES: .003/.015 [08/38] X 45° CORNER FILLETS: R.02 [±.5] MACHINED SURFACES: .125 / 3/2 INCH / mm DIMENSIONS IN [BRACKETS] ARE FOR REFERENCE ONLY	THIRD ANGLE PROJECTION	REFERENCE MATERIAL PROCESS/FINISH
				C	BLACK PAINT
				SIZE DRAWING NUMBER	71621821
				SHEET	1 OF 2

- NOTES:
1. STAKE STATOR TO MAIN FRAME PER 88830264.
 2. MAXIMUM TORQUE REQUIRED TO TURN MOTOR SHAFT IS 3/8 INCH-OUNCE.
 3. ASSEMBLE SPRING BETWEEN WASHER AND BEARING ON BACK END, WITH SPRING FINGERS TOWARD BEARING.
 4. ASSEMBLE BALL BEARINGS TO BEARING RETAINERS PER 88834419.
 5. RECUT BLUE LEADS TO 7.00 / 5.00 [177.8 / 127.0], RESTRIP TO .25 ±.06 [5.6 ±.15] AND ATTACH FLAG TERMINALS.
 6. RECUT RED AND BROWN LEADS TO 4.00 / 3.00 [101.6 / 76.2], RESTRIP TO .25 ±.06 [6.4 ±.15] AND ATTACH PIN TERMINALS AND TERMINAL HSG.
 7. RECUT WHITE AND YELLOW LEADS TO 4.00 / 3.00 [101.6 / 76.2], RESTRIP TO .25 ±.06 [6.4 ±.15] AND ATTACH SOCKET TERMINALS AND TERMINAL HSG.
 8. SWITCH LEADS MUST MEET PULL TEST PER 88834274.
 9. ATTACHED TERMINALS MUST MEET SPECIFICATIONS PER 88834229.
 10. ASSEMBLE LOCKWASHER BETWEEN CAPACITOR BRACKET AND SWITCH COVER.

FRONT END

BACK END



SWITCH INSTRUCTIONS

1. ASSEMBLE SWITCH AND ACTUATOR PER 88834261.
2. PRESS ACTUATOR ASSEMBLY AND THIMBLE ON SHAFT SO THAT TOP OF METAL ACTUATOR PLATE 568/548 FROM END OF SHAFT.
3. SWITCH MUST BE ADJUSTED TO OBTAIN .035/.025 [8.9 / 6.4] AIR GAP BETWEEN THIMBLE AND SWITCH BUTTON IN FULL OPERATING POSITION.
4. SWITCH MUST MAKE CONTACT BEFORE 1800-2500 RPM AS SPEED INCREASES AND BREAK 50-500 RPM BELOW ACTUAL MAKE.
5. SWITCH MECHANISM TO GIVE QUIET OPERATION ABOVE 2500 RPM.
6. NO SLACK ALLOWED INSIDE SWITCH COVER WHEN ASSEMBLING HEYCO.

PACKING SPECIFICATIONS

1. PACK PER 8883 4200. 1 PER CARTON, 18 PER LAYER, 108 PER PALLET.
2. PLACE A FOAM RING ON BACK END OF MOTOR, PLACE MOTOR IN CARTON, SHAFT END UP AND CONDUIT BOX TOWARD PRINTED SIDE OF CARTON.
3. PLACE A FOAM RING OVER EVERY BRACKET AND SLIDE INTO CARTON, PLACE TUBE FILLER OVER SHAFT, CLOSE FLAPS AND TAPE.
4. PLACE ONE FLAT PAD BETWEEN EACH LAYER. TRIM FLAT PADS SO THEY DO NOT EXTEND PAST OUTER EDGE OF CARTONS.
5. CARTON LABELS MUST ALL FACE ONE DIRECTION TOWARD THE OPEN END OF THE PALLET. SEE 8883 4408
6. NO PACKAGING TAPE ALLOWED ON CARTON LABEL.

DRAWING REVISION AJ	REVISION BY SED	REV DATE/DATE 10/12/2020	TOLERANCES (EXCEPT AS NOTED): DEC INCH mm ANGLE .XX ±.01 [±0.3] ° .XXX ±0.005 [±0.13] .XXX ±0.0005 [±0.013]		DRAWN BY S.DALTON	Regal Beloit America, Inc.
ECO-0192906	APPROVED BY MLS	DATE 10/12/2020	REVISED SHAFT FLAT CONFIGURATION REMOVE BURRS & BREAK SHARP EDGES: .003/.015 [08/38] X 45° CORNER FILLETS: R.02 [±.5] MACHINED SURFACES: .125 / 3.2 INCH / mm		DATE 12-13-2001	
ECO DESCRIPTION REVISED SHAFT FLAT CONFIGURATION			REFERENCE		APPROVED BY	DESCRIPTION MODEL-SFHP-3.3
<small>COPYRIGHT (PER REVISION DATE) REGAL BELOIT AMERICA, INC. ALL RIGHTS RESERVED. PROPRIETARY AND CONFIDENTIAL INFORMATION. THIS DOCUMENT IS THE PROPERTY OF REGAL BELOIT AMERICA, INC. FORMERLY AND CONTAINS OWNERS PROPRIETARY INFORMATION. ANY PERSON, CORPORATION OR OTHER FIRM RECEIVING IT IS DEEMED BY RECEIVING IT, TO AGREE THAT IT, AND/OR ANY PART OF IT, SHALL NOT BE DISCLOSED TO ANY PERSON, CORPORATION OR OTHER ENTITY, DUPLICATED, AND/OR USED, EXCEPT AS EXPRESSLY APPROVED IN WRITING IN ADVANCE BY OWNER. THIS DOCUMENT SHALL BE RETURNED TO OWNER UPON REQUEST. IT MAY BE SUBJECT TO CERTAIN RESTRICTIONS UNDER APPLICABLE EXPORT CONTROL LAWS AND REGULATIONS.</small>			THIRD ANGLE PROJECTION		MATERIAL	PROCESS/FINISH BLACK PAINT
mm DIMENSIONS IN [BRACKETS] ARE FOR REFERENCE ONLY			SIZE		DRAWING NUMBER 71621821	SHEET 2 OF 2