

# PRODUCT INFORMATION PACKET

FASCO®

Model No: D404

Catalog No: D404

1/10 HP OEM Replacement Motor, 3200 RPM, 208-230 Volts, 3.3" Diameter, Semi Enclosed  
HVAC/R OEM Replacement Motors



Regal and Fasco are trademarks of Regal Beloit Corporation or one of its affiliated companies.  
©2020 Regal Beloit Corporation, All Rights Reserved. MC017097E

REGAL



**Nameplate Specifications**

Output HP	1/10 Hp	Output KW	0.07 kW
Frequency	60 Hz	Voltage	208-230 V
Current	.8 A	Speed	3200 rpm
Service Factor	1	Phase	1
Duty	Air Over	Insulation Class	B
Frame	3.3	Enclosure	Open Air Over
Thermal Protection	Thermally Protected	Ambient Temperature	40 °C
UL	Recognized	CSA	Y
CE	N		

**Technical Specifications**

Electrical Type	Permanent Split Capacitor	Starting Method	Across The Line
Poles	2	Rotation	Reversible
Mounting	Extended Studs	Drive End Bearing	Ball
Opp Drive End Bearing	Ball	Frame Material	Steel
Shaft Type	Flat	Overall Length	7.80 in
Frame Length	4.01 in	Shaft Diameter	0.312 in
Shaft Extension	3.25 in		
Outline Drawing	71620718	Connection Drawing	00469120

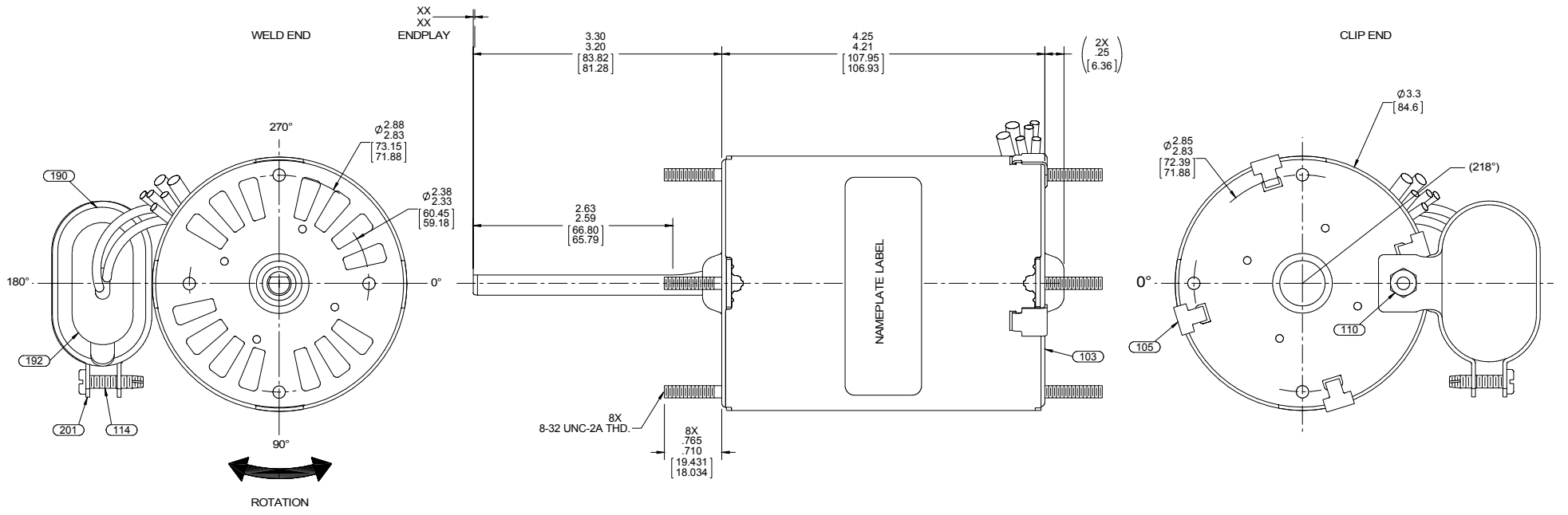
This is an uncontrolled document once printed or downloaded and is subject to change without notice. Date Created:06/11/2020

4

3

2

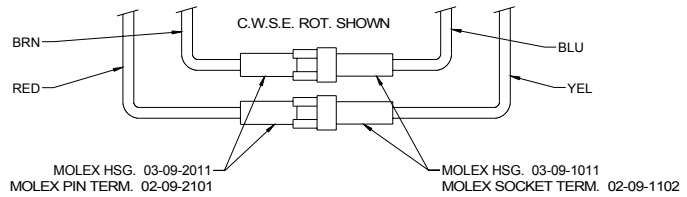
1



**LEAD MATERIAL**  
18 GA. 4/64 INSUL. 125° C. EPDM  
(1) BLK. (1) WHT, 38.00 / 36.00 [965.20/914.40] LONG WITH .56 / .44[14.22/11.18] STRIP.

**CAPACITOR LEADS**  
18 GA. 2/64 INSUL. 125° C. X-LINKED POLY.  
(1) BRN, (1) BRN / WHT  
8.00 / 6.00 [203.20/152.40] LONG W/FFLAG TERM. 89034045 AMP 42742-2

**REVERSING LEADS**  
18 GA. 2/64 INSUL. 125° C. X-LINKED POLY.  
(1) BRN, (1) RED, (1) BLU,  
(1) YEL. 8.00 / 6.00 [203.20/152.40] LONG



TO REVERSE ROTATION INTERCHANGE RED AND BROWN LEADS  
MOTORS MUST HAVE C.W.S.E. CONNECTION WHEN SHIPPING.

**NOTES:**  
108 MOTORS MAXIMUM PER PALLET.  
CAPACITOR TO BE FLUSH WITH BRACKET ON CLIP END. NO PACKAGING TAPE OVER CARTON LABEL.

00464072

00469120

**FASCO** Fasco Industries, Inc. Motor Division

Assembled in Mexico No. 71620718 Type U62B1 T.P. AO LR6319  
208-230 V 60 Hz Class B 1/10 HP  
0.8 A 3200 RPM Sealed Ball Brg  
Model D404

Connection Diagram  
C. W. S. E. C. C. W. S. E.  
Blk Line Blk Line  
Wht Line Wht Line  
Yel Line Blu Line  
Red Line Red Line  
Blu Line Yel Line  
Brn Line Brn Line  
Brn/Wht Line Brn/Wht Line

4 MFD/370 VAC

Max. Amb: 40° C

61299553

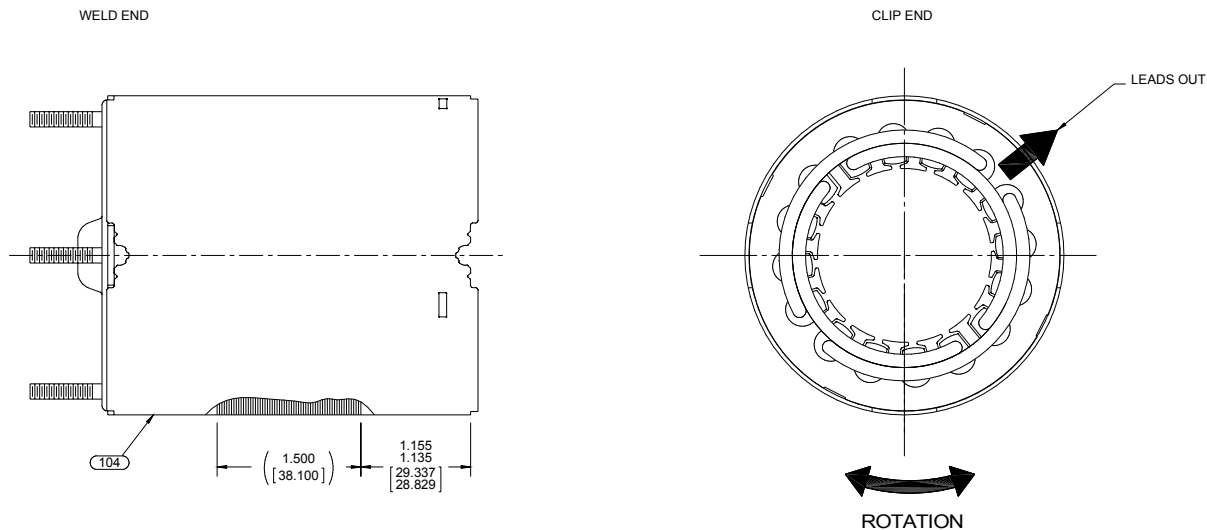
**SAFETY WARNING**  
This motor must be grounded in accordance with local or national electrical codes to prevent possible injury due to electrical shock

**AVERTISSEMENT DE SECURITE**  
Ce moteur doit être fondée sur conformément à la réglementation locale ou national électrique codes pour prévenir d'éventuelles blessures en raison de choc électrique

APPLY IN A CONVENIENT LOCATION TO READ FROM CLIP END

CUSTOMER P/N: D404	ENVIRONMENT: WET
CUSTOMER: FASCO DIST.	APPLICATION: -
	MOTOR WEIGHT: 4.78 POUNDS
CUSTOMER APPROVAL	FRONT SHAFT POSITION
SIGNED:	UP DOWN
DATE:	HORIZONTAL
MOTOR TYPE: P.S.C. REFERENCE SAMPLE NUMBER: 71620718	
00 62 30 V 06 AN 5 0 0	
TYPICAL PERFORMANCE AT 208-230 VOLTS 50/60 HZ	
IDLE FULL LOAD LOCKED BREAK	
MOTOR SPEED	RPM AMP WATT IN OZ RPM AMP WATT IN OZ RPM AMP WATT IN OZ RPM AMP WATT IN OZ
	3549 .31 57 32.0 3200 .60 130 18.0 1.42 291 50.0

DRAWING REVISION: AG	REVISION BY: Q.ZHAO	DATE: 07-10-2015	TOLERANCES UNLESS OTHERWISE SPECIFIED: DEC. INCH mm ANGLE .X ±0.1 [±2.5] ±0.5° .XX ±0.01 [±0.25] .XXX ±0.005 [±0.127] .XXXX ±0.0005 [±0.0127]	DRAWN BY: S.M.MAGGARD
ECO: ECO-0081097	APPROVED BY: C.ZHANG	DATE: 07-10-2015	REMOVE BURRS & BREAK SHARP EDGES: .0031015 [0.076381] X 45° CORNER FILLETS: R.02 [51] MACHINED SURFACES: .125 / 3.2 INCH V mm	DATE: 08-12-2004
SEE ECO			THIRD ANGLE PROJECTION	APPROVED BY:
COPYRIGHT REGAL BELOIT AMERICA, INC. ALL RIGHTS RESERVED. PROPRIETARY AND CONFIDENTIAL INFORMATION. THIS DOCUMENT IS THE PROPERTY OF REGAL BELOIT AMERICA, INC. FORMERLY AND CONTAINS OWNERS PROPRIETARY INFORMATION. ANY PERSON, CORPORATION OR OTHER FIRM RECEIVING IT IS DEEMED, BY RECEIVING IT, TO AGREE THAT IT, AND/OR ANY PART OF IT, SHALL NOT BE DISCLOSED TO ANY PERSON, CORPORATION OR OTHER ENTITY, DUPLICATED, AND/OR USED, EXCEPT AS EXPRESSLY APPROVED IN WRITING IN ADVANCE BY OWNER. THIS DOCUMENT SHALL BE RETURNED TO OWNER UPON REQUEST. IT MAY BE SUBJECT TO CERTAIN RESTRICTIONS UNDER APPLICABLE EXPORT CONTROL LAWS AND REGULATIONS.			DESCRIPTION: MODEL-SFHP-3.3 OUTLINE	DATE:
			REFERENCE: MATERIAL: PROCESS/FINISH: BLACK	SIZE: DRAWING NUMBER: 71620718 SHEET: 1 OF 2



NOTES:

1. STAKE STATOR TO SLEEVE PER P. S. 88830264.
2. MAXIMUM TORQUE REQUIRED TO TURN MOTOR SHAFT IS 3/8 INCH-OUNCE.
3. ASSEMBLE SPRING BETWEEN WASHER AND BEARING ON CLIP END, WITH SPRING FINGERS TOWARD BEARING.
4. ASSEMBLE BALL BEARINGS TO BEARING RETAINERS PER WORK CENTER PROCESS.
5. ASSEMBLE LOCK WASHER ON BOLT BETWEEN CLIP PLATE AND CAPACITOR MOUNTING BRACKET.

PACKING SPECIFICATIONS

1. PACK PER P. S. 88834200. 1 PER CARTON, 18 PER LAYER, 108 PER PALLET, 6 LAYERS PER PALLET.
2. PLACE FOAM RING ON CLIP END OF MOTOR. PLACE FILLER TUBE OVER SHAFT EXTENSION AND PLACE IN CARTON. CLOSE FLAPS AND TAPE.
3. CARTON LABELS MUST ALL FACE ONE DIRECTION TOWARD THE OPEN END OF THE PALLET. SEE P.S. 88834408.
4. PLACE ONE FLAT PAD ON PALLET AND ONE BETWEEN EACH LAYER AND ONE ON TOP.
5. PLACE ALL INSPECTION STICKERS AND WRITING ON TOP FLAT PAD.

DRAWING REVISION AG		REVISION BY Q.ZHAO	DATE 07-10-2015	TOLERANCES UNLESS OTHERWISE SPECIFIED: DEC. INCH mm ANGLE		DRAWN BY S.M.MAGGARD	
ECO-0081097		APPROVED BY C.ZHANG	DATE 07-10-2015	.XX ±0.01 [+0.25]	±0.5°	DATE 08-12-2004	
ECO DESCRIPTION SEE ECO		SEE ECO		.XXX ±0.005 [+0.127]		APPROVED BY	
COPYRIGHT REGAL BELOIT AMERICA, INC. ALL RIGHTS RESERVED. PROPRIETARY AND CONFIDENTIAL INFORMATION. THIS DOCUMENT IS THE PROPERTY OF REGAL BELOIT AMERICA, INC. FORMERLY AND CONTAINS OWNERS PROPRIETARY INFORMATION. ANY PERSON, CORPORATION OR OTHER FIRM RECEIVING IT IS DEEMED, BY RECEIVING IT, TO AGREE THAT IT, AND/OR ANY PART OF IT, SHALL NOT BE DISCLOSED TO ANY PERSON, CORPORATION OR OTHER ENTITY, DUPLICATED, AND/OR USED, EXCEPT AS EXPRESSLY APPROVED IN WRITING IN ADVANCE BY OWNER. THIS DOCUMENT SHALL BE RETURNED TO OWNER UPON REQUEST. IT MAY BE SUBJECT TO CERTAIN RESTRICTIONS UNDER APPLICABLE EXPORT CONTROL LAWS AND REGULATIONS.				.XXXX ±0.0005 [+0.0127]		DATE	
				REMOVE BURRS & BREAK SHARP EDGES: .0031 [0.0787381] X 45°		REFERENCE	
				CORNER FILLETS: R.02 [51]		MATERIAL	
				MACHINED SURFACES: .125 / 3.2 INCH V/mm V		PROCESS/FINISH BLACK	
				mm SHOWN IN [BRACKETS]		THIRD ANGLE PROJECTION	
						SIZE C	DRAWING NUMBER 71620718
							SHEET 2 OF 2