

# PRODUCT INFORMATION PACKET

FASCO®

Model No: D374

Catalog No: D374

1/8-1/20 HP Fan & Blower Motor, 1500 RPM, 2 Speed, 115 Volts, 4.4" Diameter, OAO  
Self Cooled Motors



Regal and Fasco are trademarks of Regal Beloit Corporation or one of its affiliated companies.  
©2019 Regal Beloit Corporation, All Rights Reserved. MC017097E

REGAL



**Nameplate Specifications**

Output HP	1/8-1/20 Hp	Output KW	0.10 kW
Frequency	60 Hz	Voltage	115 V
Current	4.0-2.5 A	Speed	1500 rpm
Service Factor	1	Phase	1
Duty	Air Over	Insulation Class	A
Frame	4.4	Enclosure	Open Air Over
Thermal Protection	Thermally Protected	Ambient Temperature	40 °C
UL	Recognized	CSA	Y
CE	N		

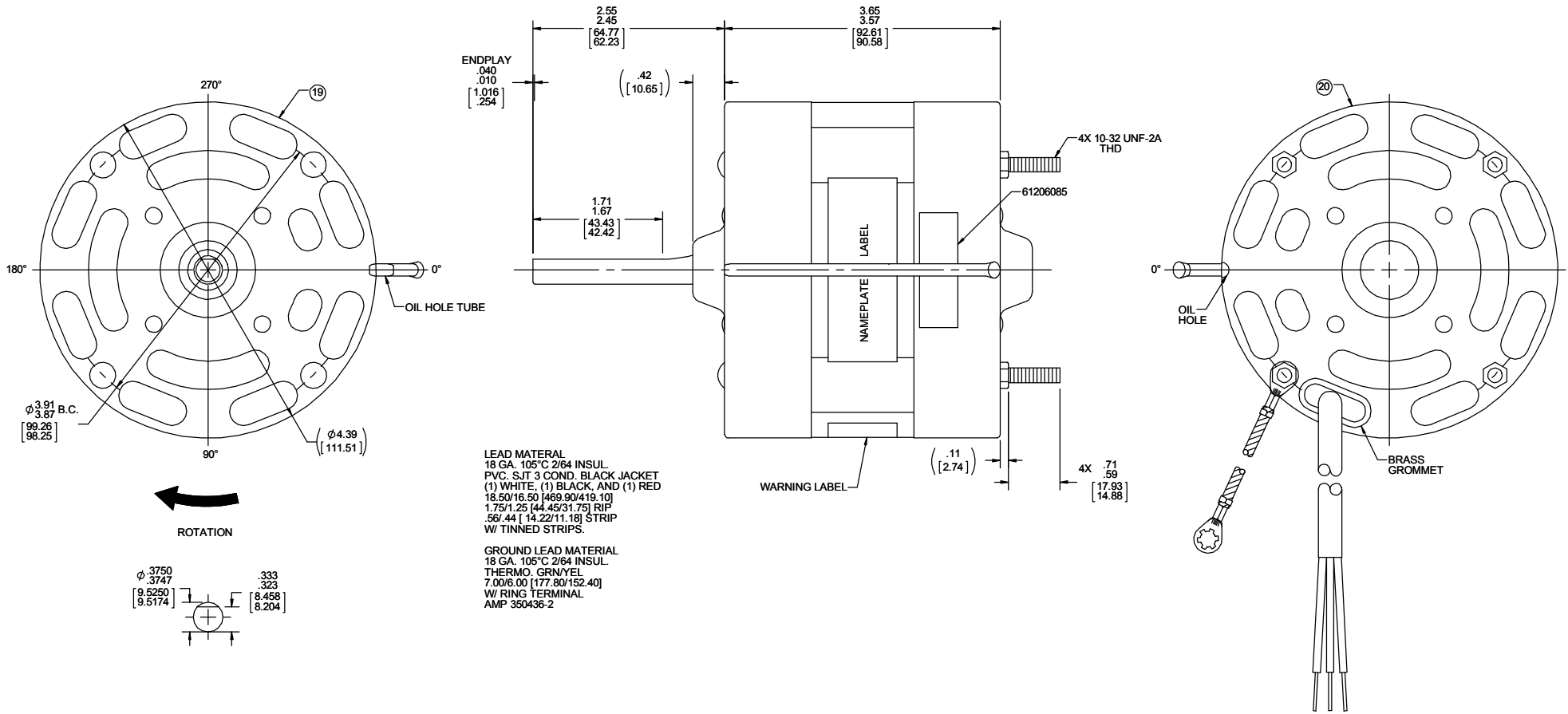
**Technical Specifications**

Electrical Type	Shaded Pole	Starting Method	Across The Line
Poles	4	Rotation	Clockwise Shaft End
Mounting	Extended Studs	Drive End Bearing	Sleeve
Opp Drive End Bearing	Sleeve	Frame Material	Na
Shaft Type	Flat	Overall Length	6.62 in
Shaft Diameter	0.313 in	Shaft Extension	2.2 in

This is an uncontrolled document once printed or downloaded and is subject to change without notice. Date Created:29/10/2019

OPPOSIT LEAD END

LEAD END



**LEAD MATERIAL**  
 18 GA. 105°C 2/64 INSUL.  
 PVC. SJT 3 COND. BLACK JACKET  
 (1) WHITE, (1) BLACK, AND (1) RED  
 18.50/16.50 [469.90/419.10]  
 1.75/1.25 [44.45/31.75] RIP  
 .55/ .44 [14.22/11.18] STRIP  
 W/ TINNED STRIPS.

**GROUND LEAD MATERIAL**  
 18 GA. 105°C 2/64 INSUL.  
 THERMO. GRN/YEL  
 7.00/6.00 [177.80/152.40]  
 W/ RING TERMINAL  
 AMP 350436-2

- NOTES:**
1. THRU AIR SPACING BETWEEN WIRE AND METAL .063 [1.600] MIN.
  2. SHAFT IS BONDERIZED.
  3. TIE BOLT TORQUE TOLERANCE 7 - 10 IN. LBS.
  4. ROTOR FREENESS TO BE WITHIN 3/4 OZ. IN.
  5. LEADS TO BE TIN DIPPED.
  6. FOR WASHER SET-UP, SEE CHART C6000279, DETAIL "H".
  7. MAXIMUM 0.1 Ω RESISTANCE BETWEEN GROUND TERMINAL AND MOTOR FRAME.
  8. LOCATE TOP LABEL, 61206085, AT 0° AS SHOWN TO READ RIGHT FROM LEAD END OF MOTOR.
  9. MOTORS MUST START WITH 90 VOLTS APPLIED TO LOWEST SPEED.
  10. SALES TO SPECIFY ON P.O. WHICH P.O. TO USE.
  11. SEE PACKAGING MANUAL PAGE 2 FOR PACKAGING PROCEDURES.
  12. PACK 1 PER CONTAINER, 40 PER LAYER, 6 LAYERS PER PALLET, 240 MAX. PER PALLET.
  13. PLACE PAMPHLET, 61224579, IN CONTAINER WITH MOTOR.
  14. SEE DRAWING 87856079 SHEET 1 FOR PALLET LAYOUT.
  15. CENTER LABEL, 61225961, ON END OF CARTON.
  16. CARTON LABELS MUST ALL FACE ONE DIRECTION TOWARD THE OPEN END OF THE PALLET. PER 88834408.
  17. NO PACKING TAPE OVER CARTON LABELS.

**SAFETY WARNING**  
 This motor must be grounded in accordance with local or national electrical codes to prevent possible injury due to electrical shock

**AVERTISSEMENT DE SÉCURITÉ**  
 Ce moteur doit être fondée sur conformément à la réglementation locale ou national électrique codes pour prévenir d'éventuelles blessures en raison de choc électrique

61305568

61206085

TOP

00464072

00464551

**FASCO INDUSTRIES, INC. MOTOR DIVISION**

Assembled in Mexico  
 No. 71080169 TYPE U8 AO PH 1  
 115 V 60 Hz 1/8-1/20 HP  
 4.0-2.5 A Model D374 LR6319  
 1500 RPM (2 SPD)  
 Thermally Protected OSB Max Amb: 40°C

Connection Diagram  
 White Line  
 Black-HI Line  
 Red-LO Line

61299553

CUSTOMER:	FASCO DIST.	APPLICATION:	DIST. SALES	HI-POT TEST 2000 VOLTS MAX. LEAKAGE CURRENT 5mA			
CUSTOMER PN:	D374	MOTOR WEIGHT:	DRY				
		ENVIRONMENT:					
MOTOR TYPE		REFERENCE SAMPLE					
SHADED POLE		A	S	C	E	B	A
B	LA	FR	V	06	GC	6	5
00	08	10					0
TYPICAL PERFORMANCE AT 115 VOLTS 60 HZ 1PH 1/8 HP							
IDLE				LOADED			
MOTOR SPEED	RPM	AMP	WATT	IN OZ	RPM	AMP	WATT
HIGH	1769	3.07	163	88	1500	3.77	274
				IN OZ	AMP	WATT	IN OZ
LOW	1765	1.86	100	56	1500	2.38	170
				IN OZ	AMP	WATT	IN OZ
							57

PRODUCTION TEST AT IDLE 115 VOLTS 60 Hz		MOTOR SPEED
AMP	WATT	
3.38 - 2.76	179.3 - 146.7	HIGH
2.05 - 1.67	110.0 - 90.0	LOW

DRAWING REVISION AA	REVISION BY SDM	DATE 8/7/2017	TOLERANCES UNLESS OTHERWISE SPECIFIED: DEC. INCH mm ANGLE .X ±0.1 [2.5] ±1° .XX ±0.01 [0.25] .XXX ±0.005 [0.127] .XXXX ±0.0005 [±0.0127]	DRAWN BY SDM	DATE 8/7/2017	DESCRIPTION <b>OUTLINE MOTOR ASSY</b>
ECO-0128663	APPROVED BY SED	DATE 8/7/2017	REMOVE BURRS & BREAK SHARP EDGES: .0031 [0.078] X 45° CORNER FILLETS: R.02 [.51]	APPROVED BY SED	DATE 8/7/2017	MATERIAL PROCESS/FINISH GRAY
CONVERT TO SOLID WORKS COPYRIGHT REGAL BELOIT AMERICA, INC. ALL RIGHTS RESERVED. PROPRIETARY AND CONFIDENTIAL INFORMATION. THIS DOCUMENT IS THE PROPERTY OF REGAL BELOIT AMERICA, INC. OWNERS AND CONTAINS OWNERS PROPRIETARY INFORMATION. ANY PERSON, CORPORATION OR OTHER FIRM RECEIVING IT IS DEEMED BY RECEIVING IT, TO AGREE THAT IT, AND/OR ANY PART OF IT, SHALL NOT BE DISCLOSED TO ANY PERSON, CORPORATION OR OTHER ENTITY, DUPLICATED, AND/OR USED, EXCEPT AS EXPRESSLY APPROVED IN WRITING IN ADVANCE BY OWNER. THIS DOCUMENT SHALL BE RETURNED TO OWNER UPON REQUEST. IT MAY BE SUBJECT TO CERTAIN RESTRICTIONS UNDER APPLICABLE EXPORT CONTROL LAWS AND REGULATIONS.			MACHINED SURFACES: .125 / 3.2 / mm SHOWN IN (BRACKETS) INCH/ mm	THIRD ANGLE PROJECTION	SIZE C	DRAWING NUMBER 71080169
						SHEET 1 OF 1