

PRODUCT INFORMATION PACKET

FASCO®

Model No: D366

Catalog No: D366

1/14-1/21 HP Condenser Fan Motor, 1500 RPM, 2 Speed, 115 Volts, 3.3" Diameter, OAO
Condenser Fans Motors



Regal and Fasco are trademarks of Regal Beloit Corporation or one of its affiliated companies.
©2019 Regal Beloit Corporation, All Rights Reserved. MC017097E

REGAL



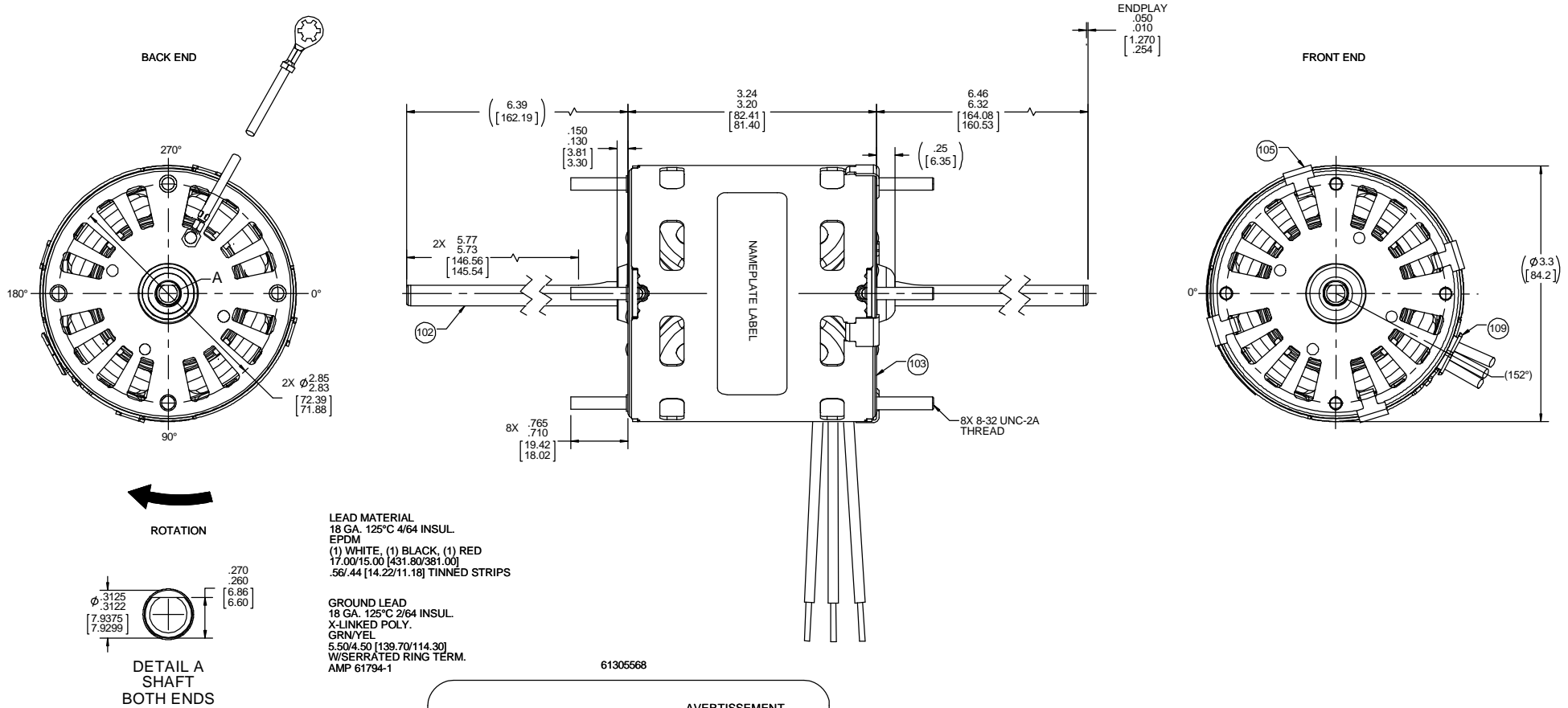
Nameplate Specifications

Output HP	1/14-1/21 Hp	Output KW	0.05 kW
Frequency	60 Hz	Voltage	115 V
Current	2.50/1.50 A	Speed	1500 rpm
Service Factor	1	Phase	1
Duty	Air Over	Insulation Class	B
Frame	3.3	Enclosure	Open Air Over
Thermal Protection	Thermally Protected	Ambient Temperature	40 °C
UL	Recognized	CSA	Y
CE	N		

Technical Specifications

Electrical Type	Shaded Pole	Starting Method	Across The Line
Poles	4	Rotation	Reversible
Mounting	Extended Studs	Drive End Bearing	Sleeve
Opp Drive End Bearing	Sleeve	Frame Material	Steel
Shaft Type	Flat	Overall Length	16.09 in
Frame Length	3.01 in	Shaft Diameter	0.313 in
Shaft Extension	6.375 in		

This is an uncontrolled document once printed or downloaded and is subject to change without notice. Date Created:29/10/2019



SAFETY WARNING
This motor must be grounded in accordance with local or national electrical codes to prevent possible injury due to electrical shock

AVERTISSEMENT DE SÉCURITÉ
Ce moteur doit être fondée sur conformément à la réglementation locale ou national électrique codes pour prévenir d'éventuelles blessures en raison de choc électrique

00464072 00469078

FASCO Motor Division Regal Beloit America, Inc.

Assembled in Mexico Connection Diagram

No. 71632745 Type U63B1 T.P. AO LR6319

115 V 60 Hz Class B

2.5/1.5 A 1500 RPM 1/14-1/21 HP

Model D366 Max Amb: 40°C

Wht — Common
Blk — High
Red — Low
Grn/Yel — Grd

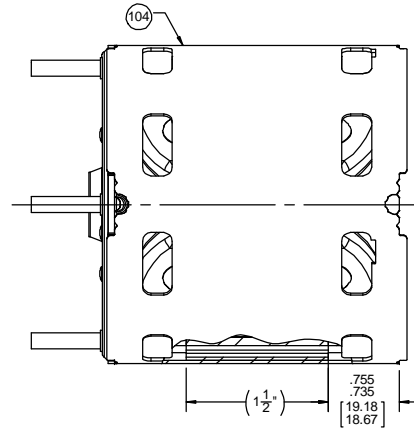
NOTES:
1. NO PACKAGING TAPE OVER CARTON LABEL

CUSTOMER:	FASCO DIST	APPLICATION:	COUNTER SALES								
CUSTOMER PN:	D366	MOTOR WEIGHT:	3.88 LBS.								
		ENVIRONMENT:	DRY								
		MOTOR TYPE	REFERENCE SAMPLE								
		SHADED POLE									
		B LA FR A S C E B A									
		00 63 30 V 06 GC 6 3 0									
TYPICAL PERFORMANCE AT 115 VOLTS 60 HZ											
	IDLE			LOADED			LOCKED			BREAK	
MOTOR SPEED	RPM	AMP	WATT	IN OZ	RPM	AMP	WATT	IN OZ	AMP	WATT	IN OZ
HIGH	1774	2.02	112	45.4	1550	2.28	170	16.0	3.14	252	50.0
LOW	1768	1.24	72	27.3	1560	1.47	109	12.0	2.10	153	33.5

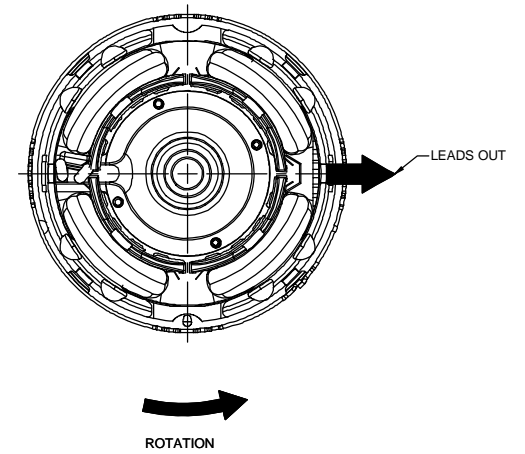
DRAWING REVISION	AC	REVISION BY	MLS	DATE	1/2/2019	TOLERANCES UNLESS OTHERWISE SPECIFIED:	DEC.	INCH	mm	ANGLE	DRAWN BY	MLS	REGAL™ Regal Beloit America, Inc.		
ECO	ECO-0159181	APPROVED BY	FDP	DATE	1/2/2019	.X	±0.1	[.2,5]	°	±1	DRAWN BY	7/5/2017			
ECO DESCRIPTION	ADDED GROUND LEAD LENGTH BACK TO PRINT					.XX	±0.01	[.0,25]			APPROVED BY	KSA	DESCRIPTION		
	COPYRIGHT REGAL BELOIT AMERICA, INC. ALL RIGHTS RESERVED.					.XXX	±0.005	[.0,127]			DATE	7/5/2017	OUTLINE MOTOR ASSY		
	PROPRIETARY AND CONFIDENTIAL INFORMATION. THIS DOCUMENT IS THE PROPERTY OF REGAL BELOIT AMERICA, INC. FORMER AND CONTAINS OWNERS PROPRIETARY INFORMATION. ANY PERSON, CORPORATION OR OTHER FIRM RECEIVING IT IS DEEMED BY RECEIVING IT, TO AGREE THAT IT, AND/OR ANY PART OF IT, SHALL NOT BE DISCLOSED TO ANY PERSON, CORPORATION OR OTHER ENTITY, DUPLICATED, AND/OR USED, EXCEPT AS EXPRESSLY APPROVED IN WRITING IN ADVANCE BY OWNER. THIS DOCUMENT SHALL BE RETURNED TO OWNER UPON REQUEST. IT MAY BE SUBJECT TO CERTAIN RESTRICTIONS UNDER APPLICABLE EXPORT CONTROL LAWS AND REGULATIONS.					.XXXX	±0.0005	[±0.0127]			REFERENCE		MATERIAL	PROCESS/FINISH	
						REMOVE BURRS & BREAK SHARP EDGES: .003/.015 [076/381] X 45° CORNER FILLETS: R.02 [.51]		MACHINED SURFACES: .125/3.2 INCH/milv				THIRD ANGLE PROJECTION	SIZE	DRAWING NUMBER	SHEET
						mm SHOWN IN (BRACKETS)						C	71632745	1 OF 2	

- NOTES:
1. STAKE STATOR TO MAIN FRAME PER 88830264.
 2. MAXIMUM TORQUE REQUIRED TO TURN MOTOR SHAFT IS 3/8 INCH-OUNCE.
 3. MAKE-UP WASHERS ARE TO BE ADDED OR DELETED TO ACHIEVE REQUIRED ENDPLAY.

BACK END

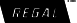


FRONT END



PACKING SPECIFICATIONS

1. PACK 1 PER CONTAINER, 18 CONTAINERS PER LAYER, 6 LAYERS PER PALLET, 108 MAX. PER PALLET, PER 88834200.
2. PLACE FILLER TUBE OVER EACH SHAFT EXTENSION AND PLACE IN CARTON LEADS DOWN, CLOSE FLAPS AND TAPE.
3. CARTON LABELS MUST ALL FACE ONE DIRECTION TOWARD THE OPEN END OF THE PALLET. SEE 88834408.
4. PLACE (1) FLAT PAD ON PALLET, (1) BETWEEN EACH LAYER AND (1) ON TOP. PLACE ALL INSPECTION STICKERS AND WRITING ON TOP FLAT PAD.

DRAWING REVISION AC	REVISION BY MLS	DATE 1/2/2019	TOLERANCES UNLESS OTHERWISE SPECIFIED: DEC. INCH mm ANGLE	DRAWN BY	 Regal Beloit America, Inc.	
ECO-0159181	APPROVED BY FDP	DATE 1/2/2019	.X ±0.1 [±2.5] ±1°	DATE 7/5/2017		
ECO DESCRIPTION ADDED GROUND LEAD LENGTH BACK TO PRINT			.XX ±0.01 [±0.25]	APPROVED BY KSA		
			.XXX ±0.005 [±0.127]	DATE 7/5/2017		
			.XXXX ±0.0005 [±0.0127]	REFERENCE	DESCRIPTION OUTLINE MOTOR ASSY	
<small>PROPRIETARY AND CONFIDENTIAL INFORMATION. THIS DOCUMENT IS THE PROPERTY OF REGAL BELOIT AMERICA, INC. FORMERLY AND CONTAINS OWNERS PROPRIETARY INFORMATION. ANY PERSON, CORPORATION OR OTHER FIRM RECEIVING IT IS DEEMED BY RECEIVING IT, TO AGREE THAT IT, AND/OR ANY PART OF IT, SHALL NOT BE DISCLOSED TO ANY PERSON, CORPORATION OR OTHER ENTITY, DUPLICATED, AND/OR USED, EXCEPT AS EXPRESSLY APPROVED IN WRITING IN ADVANCE BY OWNER. THIS DOCUMENT SHALL BE RETURNED TO OWNER UPON REQUEST. IT MAY BE SUBJECT TO CERTAIN RESTRICTIONS UNDER APPLICABLE EXPORT CONTROL LAWS AND REGULATIONS.</small>			REMOVE BURRS & BREAK SHARP EDGES: .0031 .015 [078/381] X 45° CORNER FILLETS: R.02 [.51] MACHINED SURFACES: .125/ 3.2 INCH/ mm SHOWN IN (BRACKETS)	MATERIAL	PROCESS/FINISH BLACK	
			THIRD ANGLE PROJECTION	SIZE C	DRAWING NUMBER 71632745	SHEET 2 OF 2