

# PRODUCT INFORMATION PACKET

FASCO®

Model No: D347

Catalog No: D347

1/8-1/10-1/15-1/20 HP Fan Coil / Room Air Conditioner Motor, 1550 RPM, 4 Speed, 115 Volts, 42 Frame, OAO  
Fan Coil / Room Air Conditioner Motors



Regal and Fasco are trademarks of Regal Beloit Corporation or one of its affiliated companies.  
©2020 Regal Beloit Corporation, All Rights Reserved. MC017097E

REGAL



**Nameplate Specifications**

Output HP	1/8-1/10-1/15-1/20 Hp	Output KW	0.10 kW
Frequency	60 Hz	Voltage	115 V
Current	2.3/1.6/1.2/0.7 A	Speed	1550 rpm
Service Factor	1	Phase	1
Duty	Continuous	Insulation Class	B
Frame	42	Enclosure	Open Air Over
Thermal Protection	Automatic	Ambient Temperature	40 °C
UL	Recognized	CSA	Y
CE	N		

**Technical Specifications**

Electrical Type	Permanent Split Capacitor	Starting Method	Across The Line
Poles	4	Rotation	Clockwise Lead End
Mounting	Resilient Rings	Drive End Bearing	Sleeve
Opp Drive End Bearing	Sleeve	Frame Material	Na
Shaft Type	Flat	Overall Length	24.01 in
Shaft Diameter	0.500 in	Shaft Extension	10.50 in
Connection Drawing	SEE OUTLINE	Outline Drawing	7184001510_S001

This is an uncontrolled document once printed or downloaded and is subject to change without notice. Date Created:22/09/2020

- NOTES
1. THRU AIR SPACING BETWEEN WIRE AND METAL .094 MIN.
  2. THE BOLT TORQUE TOLERANCE 7-12 IN. LBS.
  3. FOR WASHER SET-UP, SEE CHART C800 0279, DETAIL 'A'.
  4. SALES TO SPECIFY ON P.O. WHICH PACK TO USE.

ECO	REV.	DATE	SPEC/CHECK
641313	7	06-02-10	GAE/GAE
631708	10	9-8-03	MKR/MKR
638462	8	08-01-08	GAE/GAE
639119	9	02-27-09	GAE/GAE

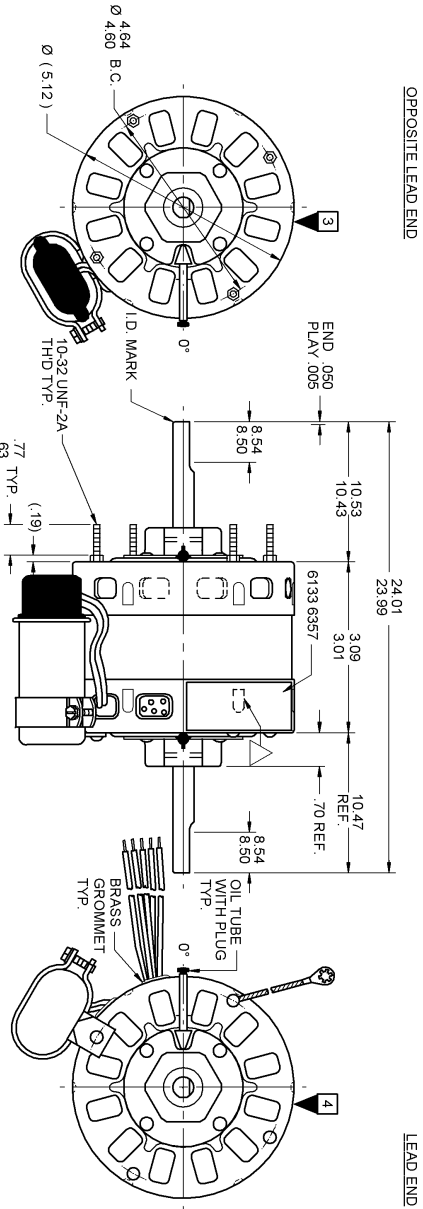
- A. SEE PACKAGING MANUAL PAGE 2 FOR PACKAGING PROCEDURES.
- 1 MOTOR/CARTON:  
10 MOTORS/LAYER:  
7 LAYERS/PALLET:  
70 MOTORS/PALLET.
- B. SEE DRAWING 8786 6079 SH. 7 FOR PALLET LAYOUT.  
C. CENTER LABEL, 6119 6991, ON END OF CARTON.  
D. PLACE PAMPHLET, 6122 4579, IN CARTON WITH MOTOR.

PERFORMANCE TEST AT IDLE	PERFORMANCE TEST	115 VOLTS	60 HZ	1 PH	1/8 HP	CAP. 5 MFD 370 VAC
AMP	WATT	RPM	AMP	WATT	RPM	AMP
1.20	98	72.6	59.4	HIGH	1790	1.09
.66	.54	45.1	36.9	MED HIGH	1785	.80
.45	.37	33.0	27.0	MED LOW	1783	.41
.29	.23	23.1	18.9	LOW	1769	.26

PRODUCTION TEST AT IDLE	MOTOR SPEED	IDLE		LOADED		LOCKED		BREAK	
		AMP	WATT	AMP	WATT	AMP	WATT	AMP	OZ/IN
115 VOLTS 60 HZ	HIGH	1.09	66	100	1550	2.09	224	26	3.31
	MED HIGH	.80	41	69	1550	1.45	153	17	2.44
	MED LOW	.41	30	50	1550	1.07	111	13	1.90
	LOW	.26	21	28	1550	.65	65	7	1.19

MAX LEAKAGE CURRENT 5 mA

7184 0015 MA



OPPOSITE LEAD END

LEAD END

LEAD DATA: 18 GA. 4/64" INS. 105° C THERMO. WHITE, BLACK, BLUE, YELLOW AND RED LINE LEADS. ALL 32.00" LONG WITH 5/64" STRIPS. BROWN AND BRN/WHY CAP. LEADS 6.00" LONG WITH 1/4" FLAG TERMS.

GROUND DATA: 18 GA. 2/64" INS. 105° C THERMO. GRN/YEL 7.00" LONG WITH A #10 SERRATED RING TERM.

7184 0015 = MADE IN U.S.A.  
7184 0015R = ASSEMBLED IN MEXICO



FASCO INDUSTRIES, INC.  
MOTOR DIVISION

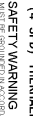


CONNECTION DIAGRAM  
BRN/WHY → CAPACITOR  
BRN/WHY → LINE  
BLU/WHY → LINE  
YEL/WHY → LINE  
RED/LO → LINE

V: 115 INS. CL. B. 40° C AMP TYPE 1984R1 ROT  
HP 1/8-1/10-1/15-1/20 CAP 5 MFD 370 VAC  
AMP 2.3-1.6-1.2-.7 HZ 60 AO NO. 7184-0015  
RPM 1550 (4 SPD) THERMALLY PROTECTED PH 1

MODEL D347

REPL. NO. 8882 6003



SAFETY WARNING  
THIS MOTOR IS NOT TO BE USED IN A HAZARDOUS ENVIRONMENT. THE USER MUST BE AWARE OF THE ELECTRICAL SHOCK HAZARD AND TAKE THE NECESSARY PRECAUTIONS TO AVOID IT.

DATE / BAR CODE AREA PER 8882 6003

6133 6357 R REV. 3

LOCATE NAMEPLATE .05 FROM EDGE OF LEAD END COVER TO READ RIGHT FROM LEAD END OF MOTOR CENTER AT 40° CWL. SIZE 3.50 X 1.00

SPECIAL INSTRUCTIONS: FLATS TO BE PARALLEL WITHIN ±20°. SHAFT IS BONDZERIZED. ROTOR IS RUSTPROOFED. CAPACITOR MUST NOT OVERHANG FRONT END OF MOTOR. LANCE MUST BE COMPLETELY COVERED BY NAMEPLATE PAMPHLET PACKED WITH MOTOR.

MOTORS PACKED MAX. PER SKID: PALLET PACK 70 CARTON PACK. TRAY PACK

CUSTOMER: FASCO DISTRIBUTING CO.

PART NUMBER: D347

APPLICATION: DIST. SALES

FINISH COLOR: GRAY

MOTOR WEIGHT: 7.25 LBS.

ENVIRONMENT: WEIT

INSULATION CLASS: B

MOTOR TYPE	MOTOR NUMBER	REV.
P.S.C.	7184 0015	R