

PRODUCT INFORMATION PACKET

FASCO®

Model No: D338

Catalog No: D338

1/6-1/10-1/12-1/15 HP Fan Coil / Room Air Conditioner Motor, 1550 RPM, 4 Speed, 115 Volts, 4.4" Diameter, OAO
Fan Coil / Room Air Conditioner Motors



Regal and Fasco are trademarks of Regal Beloit Corporation or one of its affiliated companies.
©2019 Regal Beloit Corporation, All Rights Reserved. MC017097E

REGAL



Nameplate Specifications

Output HP	1/6-1/10-1/12-1/15 Hp	Output KW	0.13 kW
Frequency	60 Hz	Voltage	115 V
Current	5.4-3.2-2.5-2.1 A	Speed	1550 rpm
Service Factor	1	Phase	1
Duty	Air Over	Insulation Class	A
Frame	4.4	Enclosure	Open Air Over
Thermal Protection	Thermally Protected	Ambient Temperature	40 °C
UL	Recognized	CSA	Y
CE	N		

Technical Specifications

Electrical Type	Shaded Pole	Starting Method	Across The Line
Poles	4	Rotation	Reversible
Mounting	Resilient Rings	Drive End Bearing	Sleeve
Opp Drive End Bearing	Sleeve	Frame Material	Na
Shaft Type	Flat	Overall Length	18.63 in
Shaft Diameter	0.500 in	Shaft Extension	7.25 in

This is an uncontrolled document once printed or downloaded and is subject to change without notice. Date Created:29/10/2019

- NOTES
1. THRU AIR SPACING BETWEEN WIRE AND METAL .063 MIN.
 2. THE BOLT TORQUE TOLERANCE 7 - 10 IN. LBS.
 3. ROTOR FREENESS TO BE WITHIN 1 OZ. IN.
 4. FOR WASHER SET-UP, SEE CHART 6900 0279 DETAIL "H".
 5. MAXIMUM 0.1 Ω RESISTANCE BETWEEN GROUND TERMINAL AND MOTOR FRAME.
 9. SALES TO SPECIFY ON P.O. WHICH PACK TO USE.

ECO

REV.

DATE

SPEC/CHECK

639654 50 05-11-09 GA/E/GAE

630933 47 4-2-03 LDC/LDC

631333 48 6-16-03 LDC/LDC

638100 49 04-18-08 GA/E/GAE

A. SEE PACKAGING MANUAL PAGE 2 FOR PACKAGING PROCEDURE.

1 MOTOR/CARTON;
20 MOTOR(S)/LAYER;
6 LAYERS/PALLET;
120 MOTOR(S)/PALLET.

B. SEE DRAWING 8785 6079 SH. 1 FOR PALLET LAYOUT.
C. CENTER LABEL, 6119 0783, ON END OF CARTON.
D. PLACE PAMPHLET, 6122 4579, IN CARTON WITH MOTOR.

If Printed, this is an Uncontrolled Document

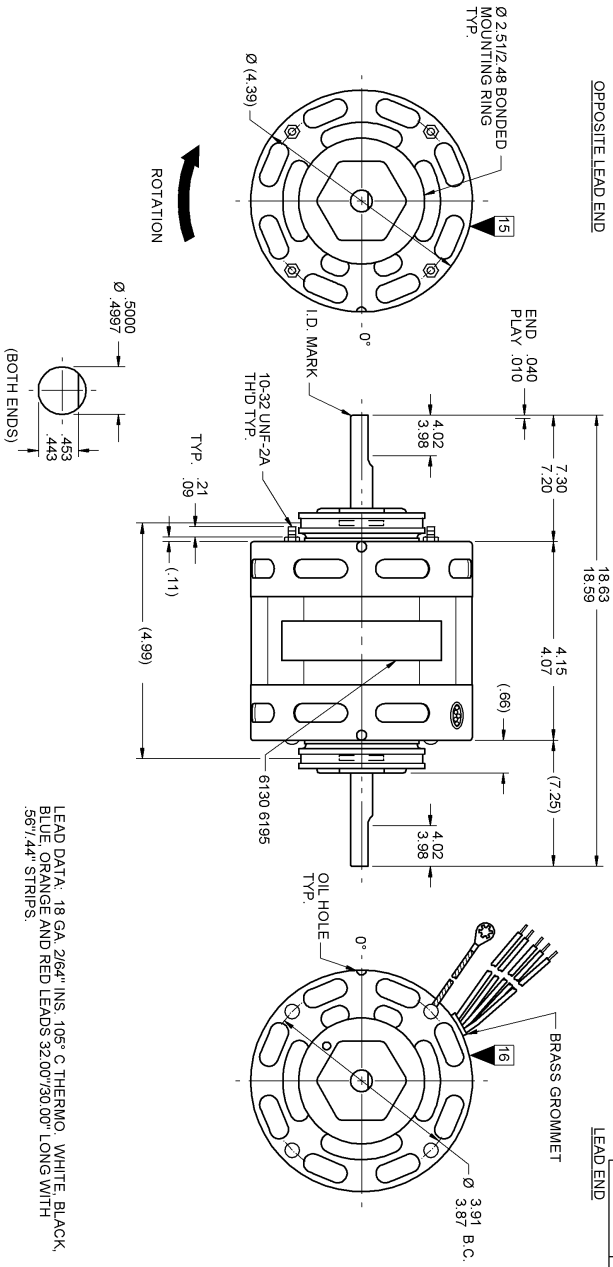
PRODUCTION TEST AT 115 VOLTS 60 HZ	MOTOR SPEED	PERFORMANCE TEST						BREAK						
		IDLE			LOADED									
AMP	WATT	RPM	AMP	WATT	OZ/IN	RPM	AMP	WATT	OZ/IN	AMP	WATT	OZ/IN		
4.51	3.69	232.1	189.9	1777	4.1	211	128	1550	5.1	363	44	7.4	47.4	135
2.53	2.07	136.3	110.7	1771	2.3	123	74	1550	3.0	212	28	4.2	280	77
2.09	1.71	111.1	90.9	1767	1.9	101	58	1550	2.4	170	18	3.3	206	60
1.65	1.35	91.3	74.7	1766	1.5	83	48	1550	2.0	141	17	2.7	169	52

HI-POT TEST 2000 VOLTS	MOTORS MUST START WITH 90 VOLTS APPLIED TO LOWEST SPEED.
MAX LEAKAGE CURRENT 5 mA	

71xx xxxxC	71xx xxxx,M

PRODUCTION TEST AT 115 VOLTS 60 HZ	MOTOR SPEED	PERFORMANCE TEST						BREAK						
AMP	WATT	IDLE			LOADED									
AMP	WATT	RPM	AMP	WATT	OZ/IN	RPM	AMP	WATT	OZ/IN	AMP	WATT	OZ/IN		
4.51	3.69	232.1	189.9	1777	4.1	211	128	1550	5.1	363	44	7.4	47.4	135
2.53	2.07	136.3	110.7	1771	2.3	123	74	1550	3.0	212	28	4.2	280	77
2.09	1.71	111.1	90.9	1767	1.9	101	58	1550	2.4	170	18	3.3	206	60
1.65	1.35	91.3	74.7	1766	1.5	83	48	1550	2.0	141	17	2.7	169	52

HI-POT TEST 2000 VOLTS	MOTORS MUST START WITH 90 VOLTS APPLIED TO LOWEST SPEED.
MAX LEAKAGE CURRENT 5 mA	



LEAD DATA: 18 GA. 2/64" INS. 105° C THERMO. WHITE, BLACK, BLUE, ORANGE AND RED LEADS 32.007/30.00" LONG WITH .587/.44" STRIPS.

GROUND DATA: 18 GA. 2/64" INS. 105° C THERMO. GRN/YEL 7.00V/6.00" LONG WITH A #10 SERRATED RING TERMINAL.

SPECIAL INSTRUCTIONS: SHAFT IS BONDERIZED. FLATS TO BE PARALLEL WITHIN ±.20" PAMPHLET PACKED WITH MOTOR.

MOTORS PACKED MAX. PER SKID: PALLET PACK, 120 CARTON PACK.

CUSTOMER: FASCO DISTRIBUTING CO. FASCO INDUSTRIES, INC.

PART NUMBER: D338

APPLICATION: DIST. SALES

MOTOR TYPE	SHADED POLE	MOTOR NUMBER	REV.
B	LA FR A S C E B A	7108 0071	M
00	08 11 V 08 OS 8 8 0		50

7108 0071 = MADE IN U.S.A.
7108 0071M = ASSEMBLED IN MEXICO

FASCO MOTOR DIVISION INC. THERMALLY PROTECTED

V. 115 HZ 60 PH 1 AO ROT
RPM 1450 (4 SPD)
AMP 5.4-3.2-2.5-2.1 TYPE 08 NO. 7108-0071

MODEL WHITE ULTRA HI
BLUE-HI
ORANGE-MED
RED-LO

CONNECTION DIAGRAM

DATE/BAR CODE AREA PER 8882 6003

6130 6195.M REV. 8

LOCATE ☉ OF NAMEPLATE ON ☉ OF STATOR TO READ RIGHT FROM LEAD END OF MOTOR CENTER AT 0°.

SIZE 3.50 X 1.00