

PRODUCT INFORMATION PACKET

FASCO®

Model No: D337

Catalog No: D337

1/8-1/10-1/12-1/15 HP Fan Coil / Room Air Conditioner Motor, 1550 RPM, 4 Speed, 115 Volts, 4.4" Diameter, OAO
Fan Coil / Room Air Conditioner Motors



Regal and Fasco are trademarks of Regal Beloit Corporation or one of its affiliated companies.
©2019 Regal Beloit Corporation, All Rights Reserved. MC017097E

REGAL



Nameplate Specifications

Output HP	1/8-1/10-1/12-1/15 Hp	Output KW	0.10 kW
Frequency	60 Hz	Voltage	115 V
Current	4.1-2.7-2.3-1.9 A	Speed	1550 rpm
Service Factor	1	Phase	1
Duty	Air Over	Insulation Class	A
Frame	4.4	Enclosure	Open Air Over
Thermal Protection	Thermally Protected	Ambient Temperature	40 °C
UL	Recognized	CSA	Y
CE	N		

Technical Specifications

Electrical Type	Shaded Pole	Starting Method	Across The Line
Poles	4	Rotation	Reversible
Mounting	Resilient Rings	Drive End Bearing	Sleeve
Opp Drive End Bearing	Sleeve	Frame Material	Na
Shaft Type	Flat	Overall Length	18.63 in
Shaft Diameter	0.500 in	Shaft Extension	7.5 in

This is an uncontrolled document once printed or downloaded and is subject to change without notice. Date Created:29/10/2019

- NOTES
1. THRU AIR SPACING BETWEEN WIRE AND METAL .063 MIN.
 2. THE BOLT TORQUE TOLERANCE 7-10 IN. LBS.
 3. ROTOR FREEMESS TO BE WITHIN .1 OZ. IN.
 4. FOR WASHER SET-UP: SEE CHART C600 0270, DETAIL "H".
 5. MAXIMUM 0.1 Ω RESISTANCE BETWEEN GROUND TERMINAL AND MOTOR FRAME.
 6. SALES TO SPECIFY ON P. O. WHICH PACK TO USE.

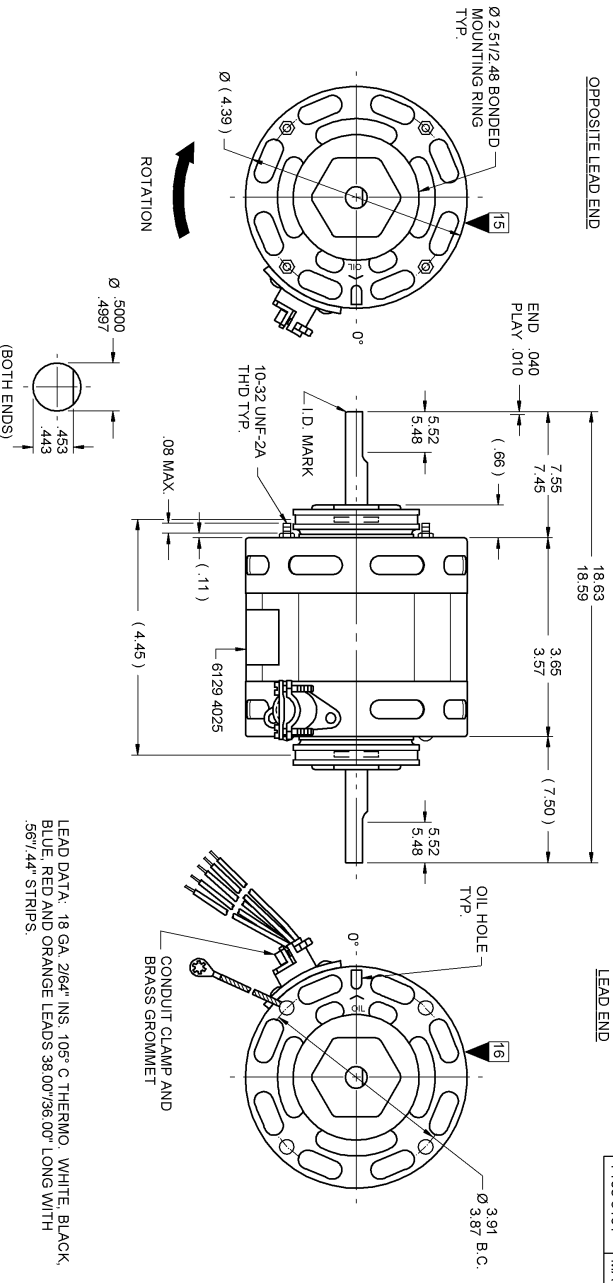
ECO	REV.	DATE	SPEC/CHECK
620103	26	12-3-97	BMCRWS
631466	27	7-15-03	MCR/MKR
638338	28	6-30-08	LDC/LDC
639559	29	4-27-09	MCR/MKR

- 71xx xxxx, M
1. SEE PACKAGING MANUAL PAGE 2 FOR PACKAGING PROCEDURES.
 - 1 MOTOR/CARTON;
 - 20 MOTOR/SLAYER;
 - 6 LAYERS/PALLET;
 - 120 MOTOR/S/PALLET.
1. SEE DRAWING 8785 6079 SH. 1 FOR PALLET LAYOUT.
 2. CENTER LABEL, 6119 4006, ON END OF CARTON.
 3. PLACE PAMPHLET, 6122 4579, IN CARTON WITH MOTOR.

71xx xxxxC

PRODUCTION TEST AT IDLE 115 VOLTS 60 HZ	MOTOR SPEED	PERFORMANCE TEST				LOADED				LOCKED				BREAK OZ/IN	
		AMP	WATT	OZ/IN	RPM	AMP	WATT	OZ/IN	RPM	AMP	WATT	OZ/IN			
3.52	— 2.88	179.3	— 146.7	HIGH	1770	3.2	163	93	1550	3.9	277	33	5.6	366	101
2.20	— 1.80	117.7	— 96.3	MED HIGH	1757	2.0	107	58	1550	2.6	179	21	3.6	224	63
1.87	— 1.53	102.3	— 83.7	MED LOW	1760	1.7	93	49	1550	2.2	151	18	3.0	185	51
1.65	— 1.35	88.0	— 72.0	LOW	1751	1.5	80	41	1550	1.8	129	16	2.6	156	43

HI-POT TEST 2000 VOLTS
MAX LEAKAGE CURRENT 5 mA
MOTORS MUST START WITH 90 VOLTS APPLIED TO LOWEST SPEED.



7108 5191 = MADE IN U.S.A.
7108 5191M = ASSEMBLED IN MEXICO

SPECIAL INSTRUCTIONS: SHAFT IS BONDERIZED. FLATS TO BE PARALLEL WITHIN ±20".
PAMPHLET PACKED WITH MOTOR.



FASCO INDUSTRIES, INC.
MOTOR DIVISION



CONNECTION DIAGRAM

WHITE — BLK-HI —
RED — BLU — HI —
RED — BLU — HI —
LINE — LINE

V-115 HZ 60 PH 1 ROT →
HP 1/8-1/10-1/12-1/15 AMP 4.1-2.7-2.3-1.9
RPM 1550 (4 SPD) NO. 7108-5191
TYPE UB THERMALLY PROTECTED
AD

MODEL D337
REDO — LINE

DATE/BAR CODE AREA PER 8882 6003

PART NUMBER: D337
APPLICATION: FINISH COLOR: GRAY
MOTOR TYPE: SHADED POLE

MOTOR NUMBER: 7108 5191
REV: 29

SAFETY WARNING
MOTOR MUST BE DISCONNECTED IN ACCORDANCE WITH THE FOLLOWING INSTRUCTIONS TO PREVENT POSSIBLE FALURE DUE TO ELECTRICAL SHOCK



LOCATE C OF NAMEPLATE ON C OF STATOR TO READ RIGHT FROM
LEAD END OF MOTOR CENTER AT Z70° CWLE
SIZE 3.50 X 1.00

MOTORS PACKED MAX. PER SKID.
CUSTOMER: FASCO DISTRIBUTING CO.
ENVIRONMENT: DRY
INSULATION CLASS: A

PALLET PACK: 120 CARTON PACK
PROHIBITARY: DO NOT SHORTCUT OR DISCONNECT THIRD PARTIES WITHOUT WRITTEN PERMISSION OF FASCO IND. INC., ELSON, MO.
MOTOR WEIGHT: LBS.
00 08 11 V 06 08 8 8 0

MOTOR NUMBER: 7108 5191
REV: 29