

PRODUCT INFORMATION PACKET

FASCO®

Model No: D289

Catalog No: D289

1/10-1/30-1/40-1/45-1/50 HP Fan Coil / Room Air Conditioner Motor, 1050 RPM, 5 Speed, 115 Volts, 42 Frame, OAO
Fan Coil / Room Air Conditioner Motors



Regal and Fasco are trademarks of Regal Beloit Corporation or one of its affiliated companies.
©2020 Regal Beloit Corporation, All Rights Reserved. MC017097E

REGAL



Nameplate Specifications

Output HP	1/10-1/30-1/40-1/45-1/50 Hp	Output KW	0.07 kW
Frequency	60 Hz	Voltage	115 V
Current	3.6/1.6/1.2/0.8/0.6 A	Speed	1050 rpm
Service Factor	1	Phase	1
Duty	Air Over	Insulation Class	B
Frame	42	Enclosure	Open Air Over
Thermal Protection	Thermally Protected	Ambient Temperature	40 °C
UL	Recognized	CSA	Y
CE	N		

Technical Specifications

Electrical Type	Shaded Pole	Starting Method	Across The Line
Poles	6	Rotation	Counterclockwise Shaft End
Mounting	Resilient Rings	Drive End Bearing	Sleeve
Opp Drive End Bearing	Sleeve	Frame Material	Na
Shaft Type	Flat	Overall Length	24.66 in
Shaft Diameter	0.500 in	Shaft Extension	10.75 in
Connection Drawing	SEE OUTLINE	Outline Drawing	7151268354_S001

This is an uncontrolled document once printed or downloaded and is subject to change without notice. Date Created:06/11/2020

NOTES

1. THRU AIR SPACING BETWEEN WIRE AND METAL .10 MIN.
2. THE BOLT TOLERANCE 7 - 12 IN. LBS.
3. FOR WASHER SET-UP SEE CHART C600 0279, DETAIL "A".
4. SALES TO SPECIFY ON P.O. WHICH PACK TO USE.

Uncontrolled Copy

ECO	REV.	DATE	SPEC/CHECK
624820	51	12-10-99	LDC/RWS
630958	52	4-7-03	LDC/LDC
638333	53	6-27-08	LDC/LDC
639092	54	02-23-09	GAE/GAE

A. SEE PACKAGING MANUAL PAGE 2 FOR PACKAGING PROCEDURE
 1 MOTOR/CARTON;
 10 MOTORS/SILAYER;
 6 LAYERS/PALLET;
 60 MOTORS/PALLET.

B. CENTER LABEL, 6119 0849, ON END OF CARTON.
 C. PLACE PAMPHLET, 6122 4579, IN CARTON WITH MOTOR.

71xx xxxxZ

71xx xxxxC

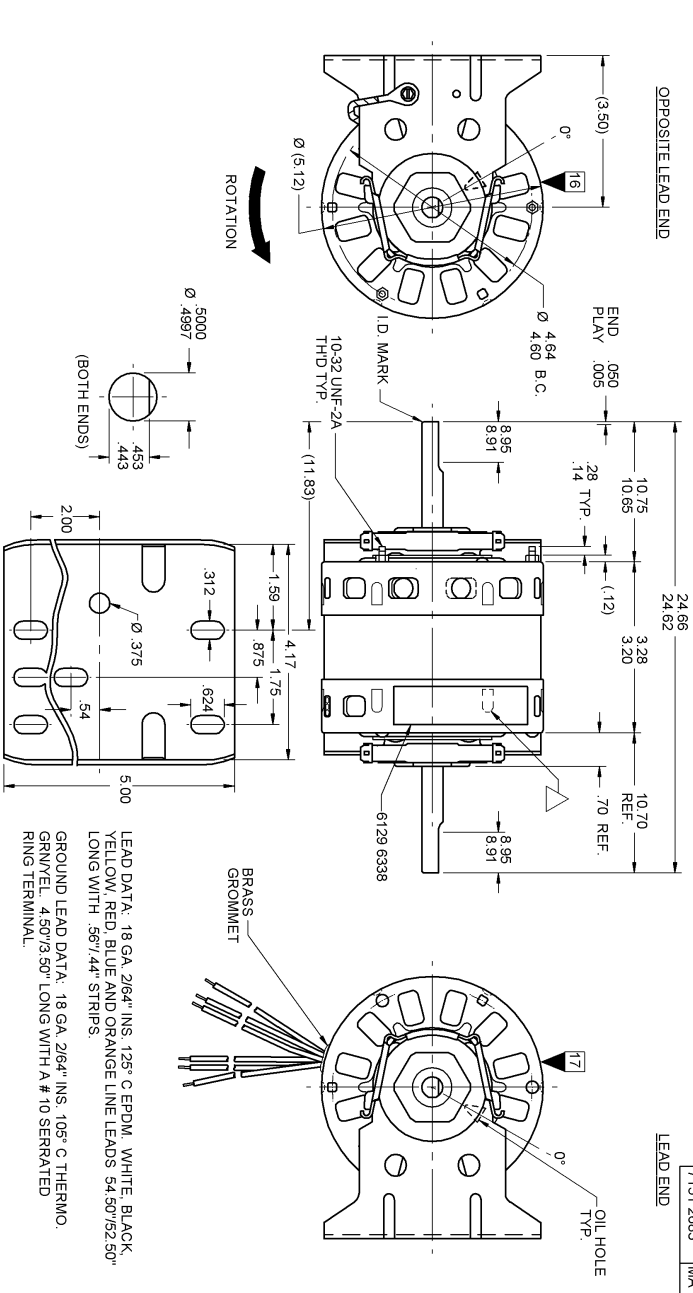
71xx xxxx,M

PRODUCTION TEST AT IDLE		MOTOR SPEED		PERFORMANCE TEST		115 VOLTS		60 HZ		1 PH		1/10 HP	
AMP	WATT	RPM	AMP	WATT	AMP	WATT	AMP	WATT	AMP	WATT	AMP	WATT	BREAK OZ/IN
3.19	2.61	191.4	156.6	2.9	17.4	94	1050	3.4	25.9	32	4.4	320	108
1.32	1.08	84.7	69.3	1.2	7.7	30	1050	1.5	10.9	14	1.8	127	36
.99	.81	61.6	50.4	.9	5.6	22	1050	1.1	8.3	11	1.4	95	29
.66	.54	39.6	32.4	6	3.6	19	1050 *	.8	5.7	8	.9	63	21
.55	.45	33.0	27.0	5	3.0	16	1050 *	.6	4.8	7	.8	52	20

HI-POT TEST 2000 VOLTS

*BELOW BREAK

7151 2893 MA



LEAD DATA: 18 GA 2/64" INS. 125° C EPDM, WHITE, BLACK, YELLOW, RED, BLUE AND ORANGE LINE LEADS 54.50/52.50" LONG WITH .56/1.44" STRIPS.
 GROUND LEAD DATA: 18 GA. 2/64" INS. 105° C THERMO. GRN/YEL. 4.50/3.50" LONG WITH A # 10 SERRATED RING TERMINAL.

7151 2893 = MADE IN U.S.A.
 7151 2893M = ASSEMBLED IN MEXICO



FASCO INDUSTRIES, INC.
 MOTOR DIVISION

THERMALLY PROTECTED
 MODEL D289



V-115 HZ 60 PH 1 AO ROT TYPE U5181
 HP 1/10-1/30-1/40-1/45-1/50 TYP U5181
 AMP 3.6-1.6-1.2- .8- 6 RPM 1050 (S SPD)
 NO. 7151-2893 INS CL. B 40° C AMB
 DATE/BAR CODE AREA PER 8882 6003
 6129 6338 M REV. 14

SPECIAL INSTRUCTIONS: SHAFT IS BONDZERIZED. FLATS TO BE PARALLEL WITHIN ±.20". ROTATE MOTOR 120° CW/LE IN BASE, AS SHOWN. LANCE MUST BE COMPLETELY COVERED BY NAMEPLATE. PAMPHLET PACKED WITH MOTOR.

MOTORS PACKED MAX. PER SKID: PALLET PACK, 60 CARTON PACK, TRAY PACK

CUSTOMER: FASCO DISTRIBUTING CO.

PART NUMBER: D289

APPLICATION: DIST. SALES

FINISH COLOR: GRAY

MOTOR WEIGHT: 8.41 LBS.

ENVIRONMENT: DRY

INSULATION CLASS: B

MOTOR TYPE	SHADED POLE	MOTOR NUMBER	REV.
B LA FR A S C E B A		7151 2893	M
00 51 12 V 03 HG 9 7 0			54

LOCATE EDGE OF NAMEPLATE .05 FROM EDGE OF LEAD END COVER TO READ RIGHT FROM LEAD END OF MOTOR CENTER AT 100° CW/LE FROM 0°.

SIZE 3.50 X 1.00