

PRODUCT INFORMATION PACKET

FASCO®

Model No: D2840
Catalog No: D2840
1/5 HP OEM Replacement Motor, 1075 RPM, 208/230 Volts, 48 Frame, TEAO
HVAC/R OEM Replacement Motors



Regal and Fasco are trademarks of Regal Beloit Corporation or one of its affiliated companies.
©2020 Regal Beloit Corporation, All Rights Reserved. MC017097E

REGAL



Nameplate Specifications

Output HP	1/5 Hp	Output KW	0.15 kW
Frequency	60 Hz	Voltage	208-230 V
Current	1.16 A	Speed	1075 rpm
Service Factor	1	Phase	1
Duty	Continuous	Insulation Class	B
Frame	48	Enclosure	Totally Enclosed Air Over
Thermal Protection	Automatic	Ambient Temperature	40 °C
UL	Recognized	CSA	Y
CE	N		

Technical Specifications

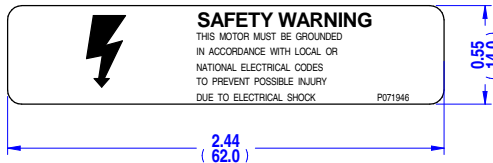
Electrical Type	Permanent Split Capacitor	Starting Method	Across The Line
Poles	6	Rotation	Clockwise Shaft End
Mounting	Extended Studs	Drive End Bearing	Sleeve
Opp Drive End Bearing	Sleeve	Frame Material	Rolled Steel
Shaft Type	Flat	Frame Length	3.74 in
Shaft Diameter	0.500 in	Shaft Extension	4.15 in
Outline Drawing	8856KTA-A15U		

This is an uncontrolled document once printed or downloaded and is subject to change without notice. Date Created:06/11/2020

MOTOR SPECIFICATION

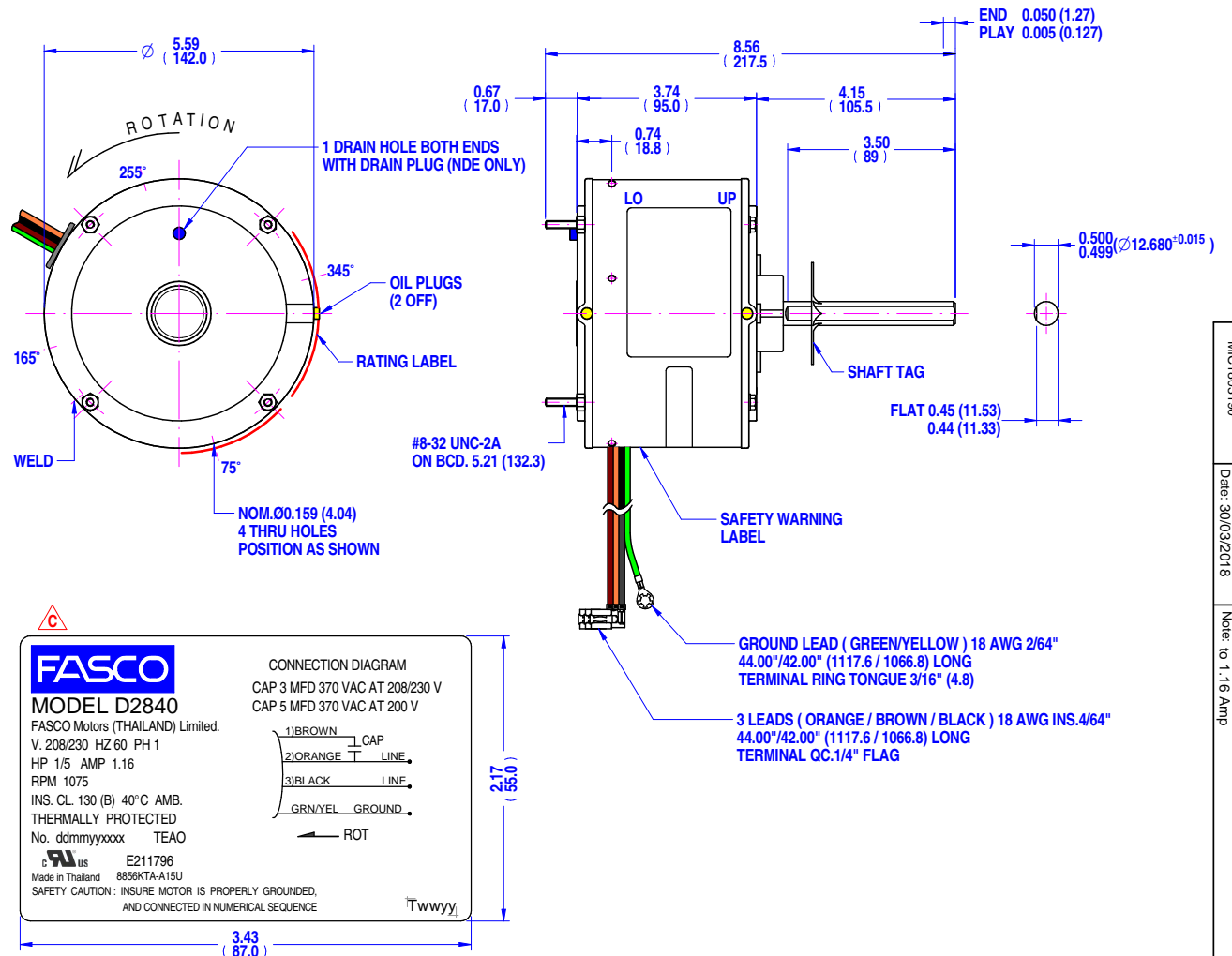
8856KTA-A15U

Q.R. No.	Y004441	CUSTOMER NO.	D2840
CUSTOMER	FASCO USA		
MOTOR RATING	VOLTS	208/230	Hz 60 Ph 1 Duty S1 AOM
	RPM.	1075	1.16 Δ AMPS
NOM. OUTPUT	1/5 HP		
ROTATION	CLOCKWISE AT DRIVE END		
CAPACITOR	START	-----	μ F/V RUN 3/--- μ F/V
ENCLOSURE	T.E.A.O.		
MOTOR TYPE	PSC	INSULATION CLASS	130 (B)
THERMAL PROTECTION	AUTO RESET OVERLOAD		
APPLICATION	FAN CONDENSING - SHAFT HORIZONTAL		
BEARING D.E.	SLEEVE	LUBRICATION	PERMAWICK OPERA.TEMP -15°-90°C
BEARING N.D.E.	SLEEVE		
SUPPLY LEAD	AS SHOWN		
EARTH PROVISION	SUPPLIED		
BASIC BUILD SPECIFICATION	305-881-05	PAINT/ COLOUR	PC GREY PLAIN E/SHIELDS
PERFORMANCE SPECIFICATION	SP88007-01		
CONNECTION DIAGRAM	AS SHOWN	RATING LABEL	AS SHOWN



FINAL INSPECTED MOTORS MUST COMPLY WITH ELECTRIC MOTOR VIBRATION SPECIFICATION (ES049)

THIRD ANGLE PROJECTION



NOTE: DIMENSIONS SHOWN INCH (mm.)
STK - 26

SPECIAL REQUIREMENTS:
 1)_CAPACITOR SUPPLIED BY CUSTOMER.
 2)_SCREW (SM13-13 / 4 EA) AND WASHER LOCK (SM19-1 / 4 EA) TO BE PACKED IN PLASTIC BAG AND PUT INTO INDIVIDUAL CARTON WITH MOTOR, IN CASE OF SINGLE PACKING.
 3)_ADD SAFETY BOOK P/N 398-063-02 IN ALL INDIVIDUAL CARTON.

UNLESS OTHERWISE SPECIFIED : DIMENSIONS ARE IN MM. TOLERANCES		MOTOR WEIGHT	4.5 kg.
DECIMALS	ANGULAR	DRAWN	Pongpun 16/03/2013
.X ± 1.0	± 30'	CHECKED	Pipat 30/03/2018
.XX ± 0.1		RELEASED	Suksakorn 30/03/2018
THIS DRAWING REMAINS THE PROPERTY OF FASCO MOTORS AND MAY NOT BE USED, COPIED OR ISSUED WITHOUT WRITTEN PERMISSION FROM FASCO MOTORS		SCALE	N.T.S.

 29/7-8 MOO 3, BANGKRUAY - SAINOI Rd., BANGKRANG, MIANG NONTHABURI DISTRICT, NONTHABURI 11000 THAILAND	FRAME	MOTOR		
	STATUS	R	S007:8856T-145-MAX:FDC	
	SHEET	A3	DWG. NO.	8856KTA-A15U
	REVISION		REVISION	C

MIC:1803190
 By: Muntana
 Date: 30/03/2018
 MIC: C: change AMP on name plate and label packing from 1.3
 Note: to 1.16 Amp