

PRODUCT INFORMATION PACKET

FASCO®

Model No: D236

Catalog No: D236

1/10-1/15-1/25 HP Fan Coil / Room Air Conditioner Motor, 1550 RPM, 3 Speed, 115 Volts, 4.4" Diameter, OAO
Fan Coil / Room Air Conditioner Motors



Regal and Fasco are trademarks of Regal Beloit Corporation or one of its affiliated companies.
©2020 Regal Beloit Corporation, All Rights Reserved. MC017097E

REGAL



Nameplate Specifications

Output HP	1/10-1/15-1/25 Hp	Output KW	0.07 kW
Frequency	60 Hz	Voltage	115 V
Current	3.5-2.4-1.8 A	Speed	1550 rpm
Service Factor	1	Phase	1
Duty	Air Over	Insulation Class	A
Frame	4.4	Enclosure	Open Air Over
Thermal Protection	Thermally Protected	Ambient Temperature	40 °C
UL	Recognized	CSA	Y
CE	N		

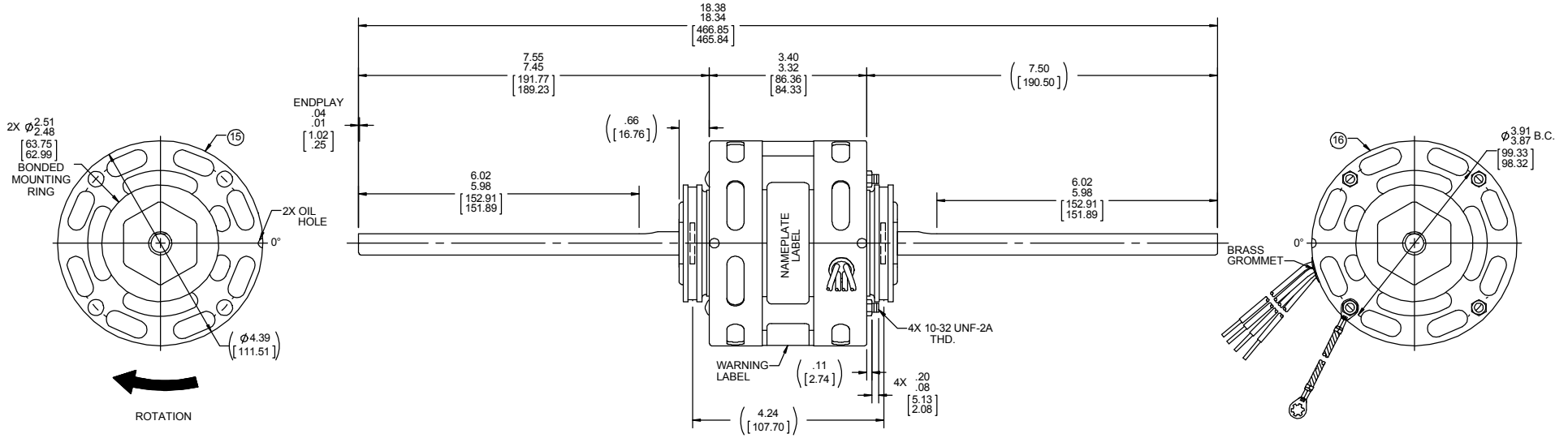
Technical Specifications

Electrical Type	Shaded Pole	Starting Method	Across The Line
Poles	4	Rotation	Clockwise Shaft End
Mounting	Resilient Rings	Drive End Bearing	Sleeve
Opp Drive End Bearing	Sleeve	Frame Material	Na
Shaft Type	Flat	Overall Length	18.38 in
Shaft Diameter	0.500 in	Shaft Extension	7.5 in
Outline Drawing	71080088	Connection Drawing	SEE OUTLINE

This is an uncontrolled document once printed or downloaded and is subject to change without notice. Date Created:06/11/2020

OPPOSITE LEAD END

LEAD END



LEAD MATERIAL
 18 GA. 105°C 2/64 INSUL.
 THERMO. BLACK, WHITE,
 BLUE, AND RED
 62.00/60.00 [1574.80/1524.00]
 .56/.44 [14.22/11.18] STRIP
 GRN/YEL GROUND MATERIAL
 7.00/6.00 [177.80/152.40]
 W/ RING TERMINAL
 AMP 350436-2

ROTATION

SHAFT DETAIL
 (BOTH ENDS)

- NOTES:
1. THRU AIR SPACING BETWEEN WIRE AND METAL .063 [1.600] MIN.
 2. SHAFT IS BONDED/TIZED. FLATS TO BE PARALLEL WITHIN ± 20°.
 3. FOR WASHER SET-UP, SEE CHART C6010279, DETAIL "H".
 4. TIE BOLT TORQUE TOLERANCE 7 - 10 IN. LBS.
 5. ROTOR FREENESS TO BE WITHIN 1 OZ. IN.
 6. MAXIMUM 0.1 Ω RESISTANCE BETWEEN GROUND TERMINAL AND MOTOR FRAME.
 7. MOTORS MUST START WITH 90 VOLTS APPLIED TO LOWEST SPEED.
 8. SEE PACKAGING MANUAL PAGE 2 FOR PACKAGING PROCEDURES.
 9. PACK 1 PER CONTAINER, 20 MOTORS PER LAYER, 6 LAYERS PER PALLET, 120 MOTORS PER PALLET.
 10. PLACE PAMPHLET 61224579 IN CONTAINER WITH MOTOR.
 11. SEE DRAWING 67866079 SHEET 1 FOR PALLET LAYOUT.
 12. CENTER LABEL 61190782 ON END OF CARTON.
 13. CARTON LABELS MUST ALL FACE ONE DIRECTION TOWARD THE THE OPEN END OF THE PALLET, PER 88834408.
 14. NO PACKAGING TAPE OVER CARTON LABEL.

61305568

SAFETY WARNING
 This motor must be grounded in accordance with local or national electrical codes to prevent possible injury due to electrical shock.

AVERTISSEMENT DE SÉCURITÉ
 Ce moteur doit être fondée sur conformément à la réglementation locale ou national électrique codes pour prévenir d'éventuelles blessures en raison de choc électrique.

00464072 00464548

FASCO Fasco Industries, Inc. Motor Division

Assembled in Mexico No. 71080088 Type US AO Connection Diagram
 115 V 60 Hz Wnt — Line
 3.5-2.4-1.8 A 1550 RPM Blk-HI — Line
 Model D236 LR6319 Blu-MED — Line
 Thermally Protected (3 SPD) Red-LO — Line
 1/10-1/15-1/25 HP Max Amb: 40°C

61299553

CUSTOMER:	FASCO DIST.	APPLICATION:	DIST. SALES	HI-POT TEST 2000 VOLTS MAX LEAKAGE CURRENT 5mA							
CUSTOMER PN:	D236	MOTOR WEIGHT:	6.89 LBS.								
		ENVIRONMENT:	DRY								
MOTOR TYPE		REFERENCE SAMPLE									
SHADED POLE											
B	LA	FR	A	S	C	E	B	A			
00	08	11	V	05	FV	7	8	0			
TYPICAL PERFORMANCE AT 115 VOLTS 60 HZ 1PH 1/10HP											
IDLE			LOADED			LOCKED			BREAK		
MOTOR SPEED	RPM	AMP	WATT	IN OZ	RPM	AMP	WATT	IN OZ	AMP	WATT	IN OZ
HIGH	1768	2.8	144	73	1550	3.3	232	31	4.8	320	84
MED.	1767	1.9	98	51	1550	2.3	159	23	3.3	212	59
LOW	1760	1.4	73	38	1550	1.7	118	17	2.4	153	44

PRODUCTION TEST AT IDLE		MOTOR SPEED
115 VOLTS 60 Hz		
AMP	WATT	
3.08 - 2.52	158.4 - 129.6	HIGH
2.09 - 1.71	107.8 - 88.2	MED.
1.54 - 1.26	80.3 - 65.7	LOW

DRAWING REVISION AA	REVISION BY SDM	DATE 8/3/2017	TOLERANCES UNLESS OTHERWISE SPECIFIED: DEC. INCH mm ANGLE .X ±0.1 [±2.5] 1° .XX ±0.01 [±0.25] .XXX ±0.005 [±0.127] .XXXX ±0.0005 [±0.0127]	DRAWN BY SDM	DATE 8/3/2017	DESCRIPTION REGAL Regal Beloit America, Inc.
ECO-0128663	APPROVED BY SED	DATE 8/3/2017	REMOVE BURRS & BREAK SHARP EDGES: .0031 015 [076/351] X 45° CORNER FILLETS: R.02 [51] MACHINED SURFACES: .125/32 INCH/mmm SHOWN IN (BRACKETS)	APPROVED BY SED	DATE 8/3/2017	OUTLINE MOTOR ASSY
CHANGE WARNING LABEL TO 61305568			THIRD ANGLE PROJECTION	REFERENCE	MATERIAL	PROCESS/FINISH GRAY
THIRD ANGLE PROJECTION			SIZE	DRAWING NUMBER 71080088	SHEET 1 OF 1	