

PRODUCT INFORMATION PACKET

FASCO®

Model No: D234
Catalog No: D234
1/15 HP Fan & Blower Motor, 1580 RPM, 115 Volts, 3.3" Diameter, TEFC
Self Cooled Motors



Regal and Fasco are trademarks of Regal Beloit Corporation or one of its affiliated companies.
©2019 Regal Beloit Corporation, All Rights Reserved. MC017097E

REGAL



Nameplate Specifications

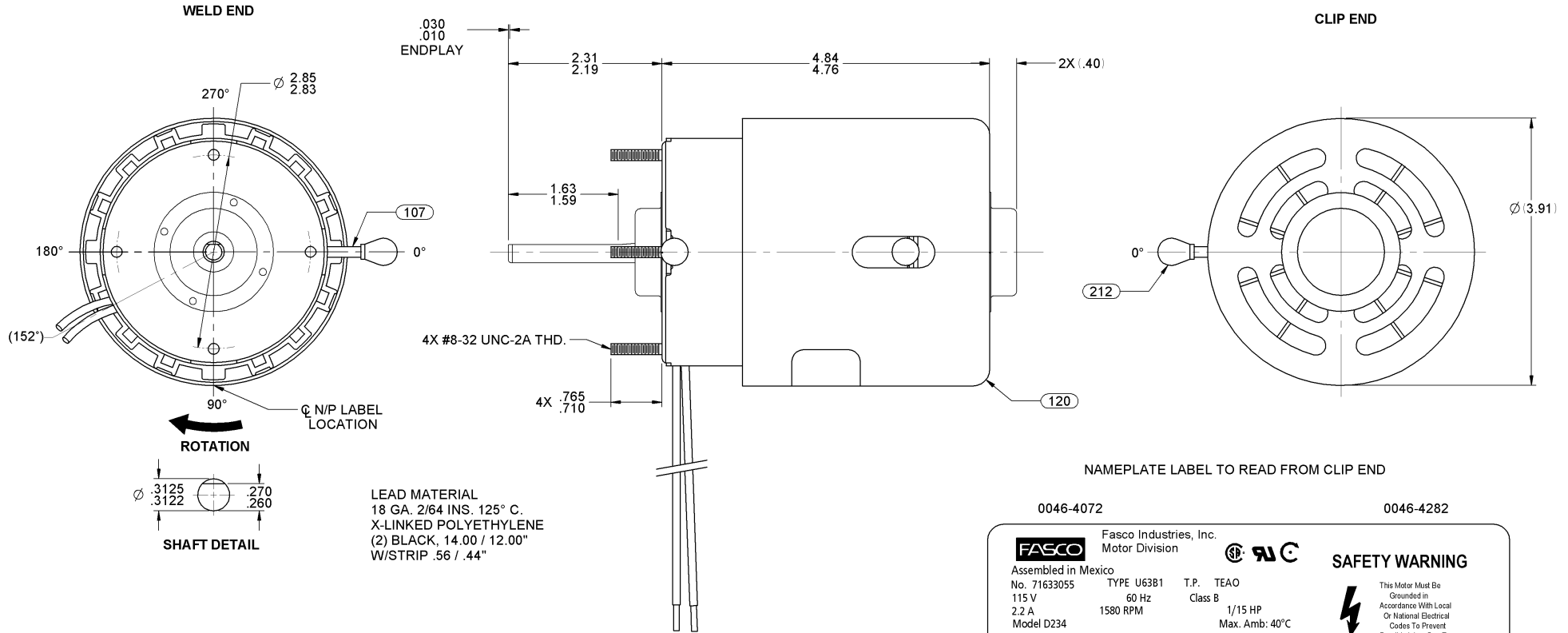
Output HP	1/15 Hp	Output KW	0.05 kW
Frequency	60 Hz	Voltage	115 V
Current	2.20 A	Speed	1580 rpm
Service Factor	1	Phase	1
Duty	Air Over	Insulation Class	B
Frame	3.3	Enclosure	Totally Enclosed Air Over
Thermal Protection	Thermally Protected	Ambient Temperature	40 °C
UL	Recognized	CSA	Y
CE	N		

Technical Specifications

Electrical Type	Shaded Pole	Starting Method	Across The Line
Poles	4	Rotation	Clockwise Shaft End
Mounting	Extended Studs	Drive End Bearing	Sleeve
Opp Drive End Bearing	Sleeve	Frame Material	Steel
Shaft Type	Flat	Overall Length	7.55 in
Frame Length	2.14 in	Shaft Diameter	0.313 in
Shaft Extension	2.25 in		

This is an uncontrolled document once printed or downloaded and is subject to change without notice. Date Created:29/10/2019

27	REVISED N/P LABEL	SD 1-23-08	28	PICTORIALLY REMOVED BARCODE FROM N/P LABEL	SD 10-27-09	29	REMOVED BULK PACK OPTION	4002327	SD 6-13-11	STANDARD TOLERANCES: ANGULAR +/- 1 DEGREE 2 PLACE DECIMAL +/- .01 3 PLACE DECIMAL +/- .005
----	-------------------	------------	----	--	-------------	----	--------------------------	---------	------------	---



NAMEPLATE LABEL TO READ FROM CLIP END

0046-4072

0046-4282

FASCO	Fasco Industries, Inc. Motor Division			SAFETY WARNING
Assembled in Mexico No. 71633055	TYPE U6381	T.P. TEAO	Class B	This Motor Must Be Grounded in Accordance With Local Or National Electrical Codes To Prevent Possible Injury Due To Electrical Shock
115 V	60 Hz	1/15 HP	Max. Amb: 40°C	
2.2 A	1580 RPM			
Model D234 LR6319				

NOTES:
PACK 210 MAX. MOTORS PER PALLET.
NO PACKAGING TAPE OVER CARTON LABEL.

FRONT SHAFT POSITION		TYPICAL PERFORMANCE AT 115 VOLTS 60 Hz.											CUSTOMER: FASCO DIST.		FASCO FASCO MOTORS GROUP AC MOTOR/BLOWER DIVISION							
HORIZONTAL	MOTOR SPEED	IDLE			LOADED			LOCKED			BREAK	PART NUMBER: D234	CONFIDENTIAL; DO NOT DUPLICATE OR DISCLOSE TO THIRD PARTIES WITHOUT WRITTEN PERMISSION OF FASCO MOTORS GROUP, AC MOTOR/BLOWER DIVISION.									
		R.P.M.	AMP.	WATT	IN.OZ.	R.P.M.	AMP.	WATT	IN.OZ.	AMP.	WATT	IN.OZ.	APPLICATION: COUNTER SALES	MOTOR TYPE			DRAWING NUMBER					
		1771	2.06	114	50.0	1610	2.46	180	19.8	3.83	264	58.8	MOTOR WEIGHT: 4.97 POUNDS	SHADED POLE			7163 3055					
CUSTOMER APPROVAL:													ENVIRONMENT: DRY	REV. 29								
SIGNED:													FINISH COLOR: BLACK	B	LA	FR	A	S	C	E	B	A
DATE:													DRAWN BY: S. M. MAGGARD	00	63	28	T	08	GM	5	3	0
													DATE DRAWN: 5-7-2002									