

PRODUCT INFORMATION PACKET

FASCO®

Model No: D221

Catalog No: D221

1/6-1/8-1/10-1/12 HP Fan Coil / Room Air Conditioner Motor, 1550 RPM, 4 Speed, 120 Volts, 42 Frame, OAO
Fan Coil / Room Air Conditioner Motors



Regal and Fasco are trademarks of Regal Beloit Corporation or one of its affiliated companies.
©2020 Regal Beloit Corporation, All Rights Reserved. MC017097E

REGAL



Nameplate Specifications

Output HP	1/6-1/8-1/10-1/12 Hp	Output KW	0.13 kW
Frequency	60 Hz	Voltage	120 V
Current	3.2/1.7/1.3/1.1 A	Speed	1550 rpm
Service Factor	1	Phase	1
Duty	Continuous	Insulation Class	B
Frame	42	Enclosure	Open Air Over
Thermal Protection	Thermally Protected	Ambient Temperature	40 °C
UL	Recognized	CSA	Y
CE	N		

Technical Specifications

Electrical Type	Permanent Split Capacitor	Starting Method	Across The Line
Poles	4	Rotation	Reversible
Mounting	Resilient Rings	Drive End Bearing	Sleeve
Opp Drive End Bearing	Sleeve	Frame Material	Na
Shaft Type	Flat	Overall Length	19.58 in
Shaft Diameter	0.500 in	Shaft Extension	8.13 in
Connection Drawing	SEE OUTLINE	Outline Drawing	7184026406_S001

This is an uncontrolled document once printed or downloaded and is subject to change without notice. Date Created:22/09/2020

- NOTES
1. THRU AIR SPACING BETWEEN WIRE AND METAL .094 MIN.
 2. THE BOLT TOLERANCE 7 - 12 IN. LBS.
 3. FOR WASHER SET-UP, SEE CHART 6000 0279, DETAIL "A".
 4. LOCATE CONNECTION DIAGRAM, 6129 6408, ON LEAD END COVER AT 0° TO READ
 5. RIGHT FROM LEAD END OF MOTOR.
 6. CONNECT THE TWO YELLOW REV. LEADS TOGETHER AND THE TWO PURPLE REV. LEADS TOGETHER. THIS WILL GIVE COWLE ROTATION.
 7. SALES TO SPECIFY ON P.O. WHICH PACK TO USE.

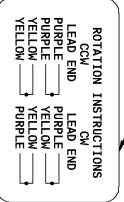
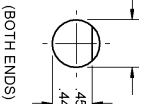
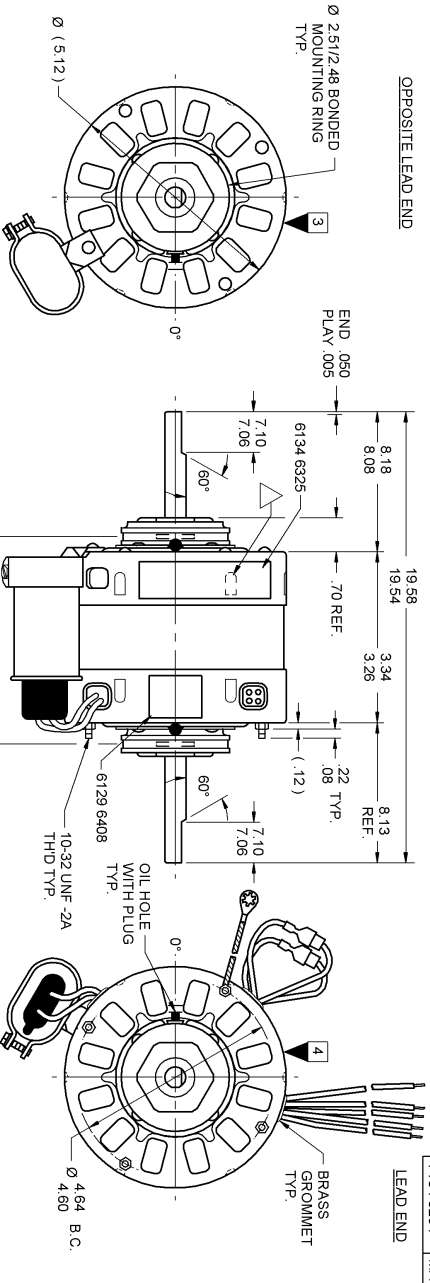
ECO	REV.	DATE	SPEC/CHK
638198	4	5-20-08	MKR/MKR
639184	5	03-10-09	GAE/GAE
641601	6	09-24-10	GAE/GAE
634178	3	1-20-05	JAK/RWS

- A. SEE PACKAGING MANUAL PAGE 2 FOR PACKAGING PROCEDURE:
- 1 MOTOR/CARTON;
 - 10 MOTOR/LAYER;
 - 6 LAYERS/PALLET;
 - 60 MOTORSPALLET.
- B. CENTER LABEL, 6120 6426 ON END OF CARTON.
- C. SEE DRAWING 8786 6079 SH. 1 FOR PALLET LAYOUT.
- D. PLACE PAMPHLET, 6122 4579, IN CARTON WITH MOTOR.

71xx xxxxZ	71xx xxxxC	71xx xxxx,R

PRODUCTION TEST AT IDLE 115 VOLTS 60 HZ	MOTOR SPEED	PERFORMANCE TEST 120 VOLTS 60 HZ 1 PH 1/6 HP				CAP. 5 MFD 370 VAC					
		AMP	WATT	OZ/IN	RPM	AMP	WATT	OZ/IN	RPM		
1.44	HIGH	1.43	95	155.0	1550	3.23	367	29.0	5.11	574	159.0
.59	MED. HI	1.779	42	87.0	1550	1.71	190	19.0	3.19	335	95.0
.45	MED. LO	1.775	35	66.0	1550	1.33	146	15.0	2.47	250	71.0
.36	LOW	1.773	28	53.0	1550	1.05	116	11.0	2.01	199	59.0

HI-POT TEST 2000 VOLTS
MAX LEAKAGE CURRENT 5 mA
TYPICAL PERFORMANCE SHOWN ABOVE FOR COWLE ROTATION.



7184 0264= MADE IN U.S.A.
7184 0264R = ASSEMBLED IN MEXICO

LEAD DATA: 18 GA. 2/64" INS. 105° C THERMO. WHITE, BLACK, ORANGE, BLUE AND RED LINE LEADS 32.00"/30.00" LONG WITH .567"/.44" STRIPS. BROWN AND BRN/WH CAP LEADS 5.00"/3.00" LONG WITH 1/4" FLAG TERMINALS.

REV. LEAD DATA: 18 GA. 2/64" INS. 105° C THERMO. 2-YELLOW AND 2-PURPLE 8.00"/6.00" LONG WITH 1/4" PRE-INSULATED O.C. TERMINALS.

GROUND DATA: 18 GA. 2/64" INS. 105° C THERMO. GRN/YEL 7.00"/6.00" LONG WITH A #10 SERRATED RING TERMINAL.

SPECIAL INSTRUCTIONS: FLATS TO BE PARALLEL WITHIN ±20°. SHAFT IS BONDERIZED. MOUNTING RING ASSEMBLED BACKWARDS. PAMPHLET PACKED WITH MOTOR.

MOTORS PACKED MAX. PER SKID. PALLET PACK 60 CARTON PACK. TRAY PACK

CUSTOMER: FASCO DISTRIBUTING CO.
PART NUMBER: D221
APPLICATION: DIST. SALES
FINISH COLOR: GRAY
MOTOR WEIGHT: LBS.
ENVIRONMENT: DRY
INSULATION CLASS: B



FASCO INDUSTRIES, INC.
MOTOR DIVISION
ELDON PLANT

APPLICATOR: DIST. SALES
MOTOR TYPE: P.S.C.
MOTOR NUMBER: 7184 0264
REV. 6

FASCO INDUSTRIES, INC. MODEL D221 CONNECTION DIAGRAM
MOTOR DIVISION

V-120 HZ 60 PH. 1 AD JNS CL B CAP 5 MFD 370 VAC
HP 1/6-1/8-1/4-1/2-1/2 TYPE U9481 NO. 7184-0264
RPM 1550 (4 SPD) 40° C AMB THERMALLY PROTECTED
SAFETY WARNING
THIS MOTOR MUST BE SERVICED IN ACCORDANCE WITH THE FOLLOWING INSTRUCTIONS TO PREVENT POSSIBLE INJURY DUE TO ELECTRICAL SHOCK

6134 6325 R REV. 3

LOCATE EDGE OF NAMEPLATE .05 FROM EDGE OF OPP. LEAD END COVER TO READ RIGHT FROM LEAD END OF MOTOR CENTER AT 20° COWLE. SIZE 3.50 X 1.00